

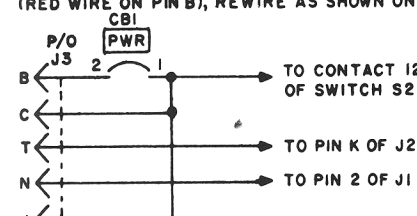
**NOTES:**

- UNLESS OTHERWISE INDICATED, RESISTANCES ARE IN OHMS, CAPACITANCES ARE IN UUF.
- WAFER SWITCH (S2) IS VIEWED FROM KNOB END AND IS SHOWN IN EXTREME CCW POSITION.
- INDICATES EQUIPMENT MARKING.
- RECEPTACLE VIEWED FROM PIN OR RECEPTACLE SIDE.
- ANT. FREQ. CONTROL** SWITCH S2 (REAR)

POSITION	PANEL MARKING	CONTACTS USED
1	30-33 MCS	1-12
2	33-37 MCS	2-12
3	37-42 MCS	3-12
4	42-47.5 MCS	4-12
5	47.5-53 MCS	5-12
6	53-56 MCS	1-12
7	56-60 MCS	2-12
8	60-65 MCS	3-12
9	65-70.5 MCS	4-12
10	70.5-76 MCS	5-12

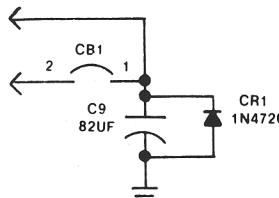
ON SWITCH S2 (FRONT), CONTACTS 6 AND 12 ARE USED IN POSITIONS 1 THROUGH 5 AND CONTACTS 11 AND 12 ARE USED IN POSITIONS 6 THROUGH 10.

- VOLTAGE MEASUREMENTS TAKEN WITH RCVR-XMTR DISCONNECTED FROM AM-2060(\*)/GRC.
- J2 CIRCUITS THRU CX-4655/GRC TO RECEIVER-TRANSMITTER.
- J3 CIRCUITS TO MT-1029/VRC FOR CONNECTION TO VEHICULAR BATTERY AND ASSOCIATED INTERCOM EQUIPMENT (AM-1780/VRC, ETC).
- J4 CIRCUITS THRU CX-4722/VRC TO MX-2799/VRC (AT-912/VRC) OR MX-6707/VRC (AS-1729/VRC).
- FOLLOWING INCORRECT CIRCUIT CONNECTION AT J3 PROVIDED ON EQUIPMENT PROVIDED ON ORDERS NO. 15108-PP-62 AND 5175-PP-64. IF WIRED AS BELOW (RED WIRE ON PIN B), REWIRE AS SHOWN ON SCHEMATIC.



- CB AND C9 PROVIDED IN AM-2060A/GRC ONLY.

ON CONTRACT DAAB07-79-C-0068 CAPACITOR C8 REMOVED AND DIODE CR1 IS INSTALLED AS FOLLOWS.



- ON CONTRACT DAAB07-79-C-0068 RESISTOR R6 CHANGED FROM 270 OHMS TO 220 OHMS.

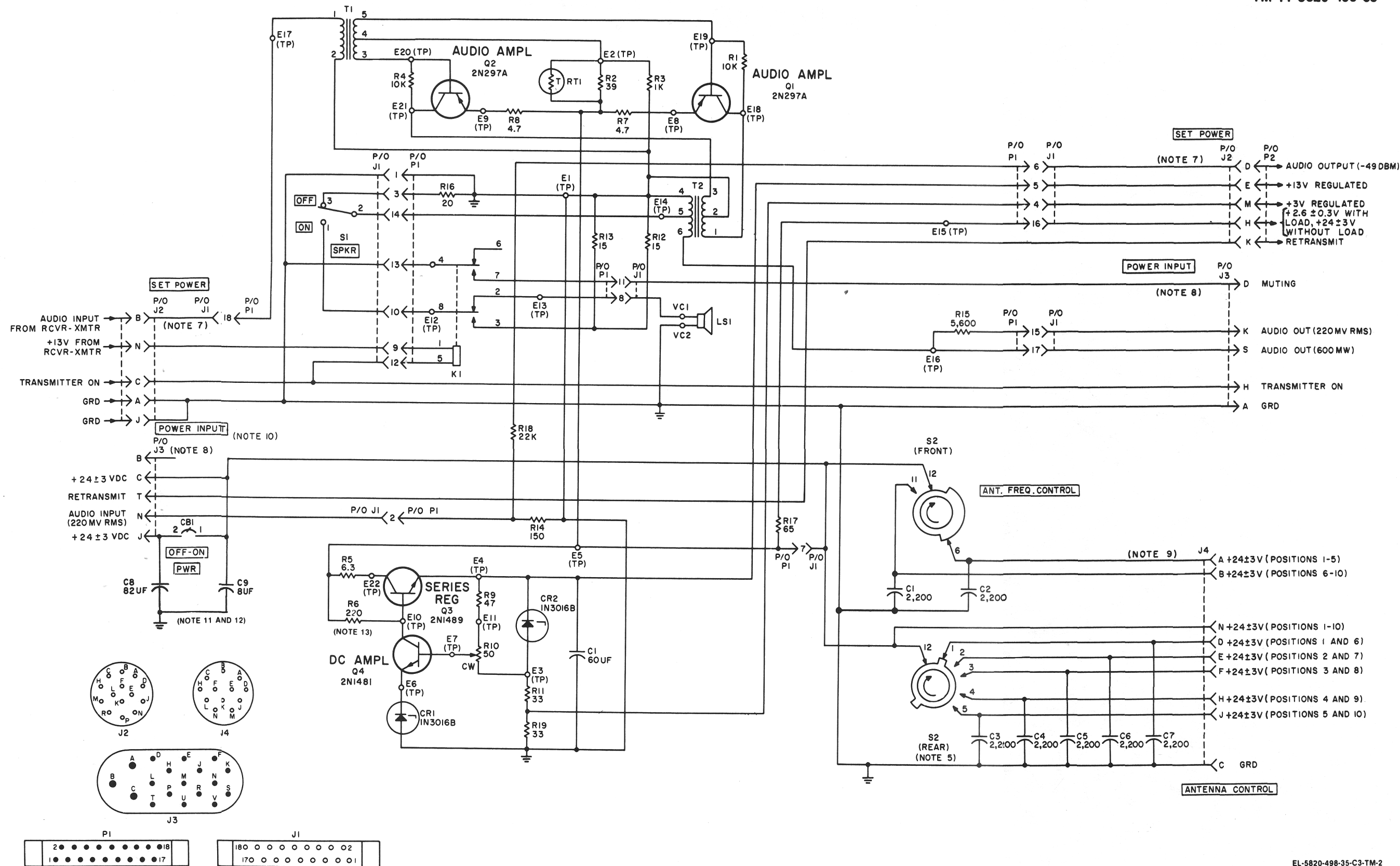


Figure 4-9. AM-2060(\*)/GRC, schematic diagram.