

TECHNICAL MANUAL

**ORGANIZATIONAL, DIRECT SUPPORT, AND
GENERAL SUPPORT MAINTENANCE
REPAIR PARTS AND SPECIAL TOOLS LISTS
(INCLUDING DEPOT MAINTENANCE
REPAIR PARTS AND SPECIAL TOOLS)**

**GENERATOR SET, GASOLINE DRIVEN
4.2 KW, 150 AMP, 28V, DC: MODEL DC
4.2-ORD/28 NSN 6115-00-857-1397**

**This is a reprint which includes current
Pages from Change 1 through 6**

CHANGE

NO. 6

HEADQUARTERS
DEPARTMENT OF THE ARMY
WASHINGTON, D.C., 30 June 1997

Organizational, Direct Support, and General Support Maintenance
Repair Parts and Special Tools List
(Including Depot Maintenance Repair Parts and Special Tools)

GENERATOR SET, GASOLINE DRIVEN
4.2 kW, 10 AMP, 28V, DC:
MODE DC 4.2-ORD/28
NSN 6115-0-857-1397

DISTRIBUTION STATEMENT A: Approved for public release; distribution is unlimited

TM 5-6115596-24P, 19 September 1980 is changed as follows:

1. Remove and insert pages as indicated below. New or changed text material is indicated by a vertical bar in the margin. An illustration change is indicated by a miniature pointing hand.

Remove pages	Insert pages
i/(ii blank)	i/(ii blank)
9 and 10	9 and 10
15 through 18	15 through 18
18.1 and 18.2	18.1 and 18.2
25 and 26	25 and 26
35 through 40	35 through 40
41/(42 blank)	-----

2. Retain this sheet in front of manual for reference purposes.

By Order of the Secretary of the Army:

Official:

DENNIS J. REIMER
General, United States Army
Chief of Staff

JOEL B. HUDSON
Administrative Assistant to the
Secretary of the Army
03434

DISTRIBUTION:

To be distributed in accordance with DA Form 12-25-E, block no. 0887, requirements for TM 5-6115-596-24P.

CHANGE

NO. 5

HEADQUARTERS
DEPARTMENT OF THE ARMY
WASHINGTON, D.C., 17 September 1991

Organizational, Direct Support, and General Support Maintenance Manual
Repair Parts and Special Tools Lists
(Including Depot Maintenance Repair Parts and Special Tools)

GENERATOR SET, GASOLINE DRIVEN
4.2 kW, 150 AMP, 28V, DC
MODEL DC 4.2-ORD/28
NSN 6115-00-857-1397

Approved for public release; distribution is unlimited

TM 5-6115-596-24P, 19 September 1980 is changed as follows:

1. Remove and insert pages as indicated below. New or changed text material is indicated by a vertical bar in the margin. An illustration change is indicated by a miniature pointing hand.

Remove pages	Insert pages
9 and 10	9 and 10
21 and 22	21 and 22
35 through 40	35 through 40

2. Retain this sheet in front of manual for reference purposes.

By Order of the Secretary of the Army:

GORDON R. SULLIVAN
General, United States Army
Chief of Staff

Official:

PATRICIA P. HICKERSON
Brigadier General United States Army
The Adjutant General

DISTRIBUTION:

To be distributed in accordance with DA Form 12-25E, (qty rqr block no. 0887).

CHANGE

NO. 4

HEADQUARTERS
DEPARTMENT OF THE ARMY
WASHINGTON, D.C., 23 NOVEMBER 1990

Organizational, Direct Support, and General Support Maintenance Manual
Repair Parts and Special Tools Lists
(Including Depot Maintenance Repair Parts and Special Tools)

GENERATOR SET, GASOLINE DRIVEN
4.2 kW, 150 AMP, 28V, DC
MODEL DC 4.2-ORD/28
NSN 6115-00-857-1397

Approved for public release; distribution is unlimited

TM 5-6115-596-24P, 19 September 1980 is changed as follows:

1. Remove and insert pages as indicated below. New or changed text material is indicated by a vertical bar in the margin. An illustration change is indicated by a miniature pointing hand.

Remove pages	Inset pages
----- 27 and 28	26.1 and 26.2 27 and 28

2. Retain this sheet in front of manual for reference purposes.

By Order of the Secretary of the Army:

CARL E. VUONO
General, United States Army
Chief of Staff

Official:

THOMAS F. SIKORA
Brigadier General, United States Army
The Adjutant General

DISTRIBUTION:

To be distributed in accordance with DA Form 12-25E, (qty rqr block no. 0887).

CHANGE

NO. 3

HEADQUARTERS
DEPARTMENT OF THE ARMY
WASHINGTON, D.C., 15 February 1990

Organizational, Direct Support, and
General Support Maintenance Manual
Repair Parts and Special Tools Lists
(Including Depot Maintenance
Repair Parts and Special Tools)

GENERATOR SET, GASOLINE DRIVEN
4.2 kW, 150 AMP, 28V, DC
MODEL DC 4.2-ORD/28
NSN 6115-00-857-1397

Approved for public release; distribution is unlimited

TM 5-6115-596-24P, 19 September 1980 is changed as follows:

1. Remove and insert pages as indicated below. New or changed text material is indicated by a vertical bar in the margin. An illustration change is indicated by a miniature pointing hand.

Remove pages	Insert pages
11 and 12	11 and 12
25 and 26	25 and 26
29 and 30	29 and 30
37 through 40	37 through 40

2. Retain this sheet in front of manual for reference purposes.

By Order of the Secretary of the Army:

CARL E. VUONO
General United States Army
Chief of Staff

Official:

THOMAS F. SIKORA
Brigadier General, United States Army
The Adjutant General

DISTRIBUTION:

To be distributed in accordance with DA Form 12-25A, Unit and Direct Support and General Support Maintenance Requirements for Generator Set, Gas Driven, 28V, DC, 150AMP, 4.2KW, (DC4.2-ORD/28).

CHANGE }
NO. 2 }

HEADQUARTERS
DEPARTMENT OF THE ARMY
WASHINGTON, D.C., 21 March 1988

Organizational, Direct Support, and
General Support Maintenance Manual
Repair Parts and Special Tools Lists
(Including Depot Maintenance
Repair Parts and Special Tools)

GENERATOR SET, GASOLINE DRIVEN
4.2 kW, 150 AMP, 28V, DC
MODEL DC 4.2-ORD/28
NSN 6115-00-857-1397

Approved for public release; distribution is unlimited

TM 5-6115-596-24P, 19 September 1980 is changed a follows:

1. Remove and insert pages as indicated below. New or changed text material is indicated by a vertical bar in the margin. An illustration change is indicated by a miniature pointing hand.

Remove pages
5 and 6
21 and 22
22.1 and 22.2
35 and 36
37 and 38

Insert pages
5 and 6
21 and 22
22.1 and 22.2
35 and 36
37 and 38

2. Retain this sheet in front of manual for reference purposes.

By Order of the Secretary of the Army:

CARL E. VUONO
General, United States Army
Chief of Staff

Official:

R. L. DILWORTH
Brigadier General, United States Army
The Adjutant General

DISTRIBUTION:

To be distributed in accordance with DA Form 12-25A, Unit, Direct Support, and General Support Maintenance Requirements for Generator Set, Gas Driven, 28V, DC, 150AMP, 4.2KW, (DC4.2-ORD/28)

CHANGE }
NO. 1 }

HEADQUARTERS
DEPARTMENT OF THE ARMY
WASHINGTON, D.C., 25 November 1983

Organizational, Direct Support, and
General Support Maintenance Manual
Repair Parts and Special Tools Lists
(Including Depot Maintenance
Repair Parts and Special Tools)

GENERATOR SET, GASOLINE DRIVEN
4.2 kW, 150 AMP, 28V, DC: MODEL DC
4.2-ORD/28 NSN 6115-00-857-1397

Approved for public release; distribution is unlimited

TM 5-6115-596-24P, 19 September 1980 is changed as follows:

1. Remove and insert pages as indicated below.

	Remove pages	Insert pages
Section II	15 thru 18 21 and 22	15 thru 18.2 21 thru 22.3/22.4
Section II and III	24 thru 40	24 thru 41/42

2. New or changed text material is indicated by a vertical bar in the margin. An illustration change is indicated by a miniature pointing hand.

3. Retain this sheet in front of manual for reference purposes.

By Order of the Secretary of the Army:

JOHN A. WICKHAM, JR.
General, United States Army
Chief of Staff

Official:

ROBERT M. JOYCE
Major General, United States Army
The Adjutant General

DISTRIBUTION:

To be distributed in accordance with DA Form 12-25D, Organizational Maintenance Requirements for Generator Sets, Engine Driven, 5 KW, D.C.

TECHNICAL MANUAL

NO. 5-6115-596-24P

HEADQUARTERS
DEPARTMENT OF THE ARMY
WASHINGTON, D.C., 19 September 1980

ORGANIZATIONAL, DIRECT SUPPORT AND GENERAL SUPPORT MAINTENANCE
REPAIR PARTS AND SPECIAL TOOLS LISTS
(INCLUDING DEPOT MAINTENANCE REPAIR PARTS AND SPECIAL TOOLS)

GENERATOR SET GASOLINE DRIVEN
42KW, 150 AMP, 28V, DC: Model DC
4.2-ORD/28 NSN 6115-00-857-1397

REPORTING ERRORS AND RECOMMENDING IMPROVEMENTS

You can help improve this manual. If you find any mistakes, or if you know of a way to improve these procedures, please let us know. Mail your letter or DA Form 2028 (Recommended Changes to Publications and Blank Forms), or DA Form 2028-2 located in the back of this manual directly to: Commander, US Army Aviation and Troop Command, ATTN: AMSAT-I-MP, 4300 Goodfellow Blvd., St Louis, MO 63120-1798. You may also submit your recommended changes by E-mail directly to <mpmt%avma28@st-louis-emh7.army.mil>. A reply will be furnished directly to you. Instructions for sending an electronic 2028 may be found at the back of this manual immediately preceding the hard copy 2028.

DISTRIBUTION STATEMENT A: Approved for public release; distribution unlimited

TABLE OF CONTENTS

		LISTING PAGE	ILLUS FIGURE
Section I.	INTRODUCTION	2	
II.	REPAIR PARTS LIST		
Group 01.	GENERATOR COVER	6	1
02.	LINES, FITTINGS, AND HOSES	8	2
03.	MUFFLER AND PIPES	10	3
04.	GENERATOR TO REGULATOR, WIRING HARNESS	12	4
05.	ELECTRICAL LEADS	14	5
06.	SLAVE RECEPTACLE HARNESS	16	6
07.	DRIVE BELTS AND PULLEYS	18	7
08.	GENERATOR CONTROL PANEL	20	8
09.	VOLTAGE REGULATOR	22	9
10.	REGULATOR, ENGINE GENERATOR	24	10
11.	FUEL TANK	26	11
12.	GENERATOR MOUNTING	28	12
13.	STARTER GENERATOR, ENGINE	30	13
14.	ENGINE, MOUNTS AND FRAMES	32	14
99.	BULK MATERIALS	35	
Section III.	SPECIAL TOOLS LIST (NOT APPLICABLE)		
IV.	NATIONAL STOCK NUMBER AND PART NUMBER INDEX	36	

Section I. INTRODUCTION

1. Scope.

This manual lists repair parts; special tools, special test, measurement, and diagnostic equipment (TMDE), and other special support equipment required for operation and performance of organizational, direct support, and general support of the Generator Set, Gasoline Driven, 4.2KW, 28V, DC.

2. General.

a. Section II. Repair Parts List. A list of repair parts authorized for use in the performance of maintenance. The list also includes parts which must be removed for replacement of the authorized parts. Parts lists are composed of functional groups in ascending numerical sequence, with the parts in each group listed in figure and item number sequence. Bulk materials are listed in NSN sequence, as the last group in Section II.

b. Section III. Special Tools List. A list of special tools, special TMDE, and other special support equipment authorized for the performance of maintenance. (Not Applicable)

c. Section IV. National Stock Number and Part Number Index. A list, in National item identification number (NIIN) sequence, of all National stock numbers (NSN) appearing in the listings, followed by a list in alphanumeric sequence of all part numbers appearing in the listings. National stock numbers and part numbers are cross-referenced to each illustration figure and item number appearance.

3. Explanation of Columns.

a. Illustration. This column is divided as follows:

(1) Figure Number. Indicates the figure number of the illustration in which the item is shown.

(2) Item Number. The number used to identify each item called out in the illustration.

b. Source, Maintenance, and Recoverability Codes (SMR).

(1) Source Code. Source codes are assigned to support items to indicate the manner of acquiring support items for maintenance repair, or overhaul of end items. Source codes are entered in the first and second positions of the Uniform SMR Code format as follows:

Code	Definition
PA	Item procured and stocked for anticipated or known usage.
PB	Item procured and stocked for insurance purpose because essentially dictates that a minimum quantity be available in the supply system.
PC	Item procured and stocked and which otherwise would be coded PA except that it is deteriorative in nature.
PD	Support item, excluding support equipment, procured for initial issue or out-fitting and stocked only for subsequent or additional initial issues

- or outfittings. Not subject to automatic replenishment.
- PE - Support equipment procured and stocked for initial issue or outfitting to specified maintenance repair activities.
- PF - Support equipment which will not be stocked but which will be centrally procured on demand.
- PG - Item procured and stocked to provide for sustained support for the life of the equipment. It is applied to an item peculiar to the equipment which, because of probable discontinuance or shutdown of production facilities, would prove uneconomical to reproduce at a later time.
- KD - An item of a depot overhaul/repair kit and not purchased separately. Depot kit defined as a kit that provides items required at the time of overhaul or repair.
- KF - An item of a maintenance kit and not purchased separately. Maintenance kit defined as a kit that provides an item that can be replaced at organizational or intermediate levels of maintenance.
- KB - Item included in both a depot overhaul/repair kit and a maintenance kit.
- MO - Item to be manufactured or fabricated at organizational level.
- MF - Item to be manufactured or fabricated at the direct support maintenance level.
- MH - Item to be manufactured or fabricated at the general support maintenance level.
- MD - Item to be manufactured or fabricated at the depot maintenance level.
- AO - Item to be assembled at organizational level.
- AF - Item to be assembled at direct support maintenance level.
- AH - Item to be assembled at general support maintenance level.
- AD - Item to be assembled at depot maintenance level.
- XA - Item is not procured or stocked because the requirements for the item will result in the replacement of the next higher assembly.
- XB - Item is not procured or stocked. If not available through salvage, requisition.
- XC - Installation drawing, diagram, instruction sheet, field service drawing, that is identified by manufacturer's part number.
- XD - A support item that is not stocked. When required, item will be procured through normal supply channels.

NOTE

Cannibalization or salvage may be used as a source of supply for any items coded above except those coded XA or XD.

(2) Maintenance Code. Maintenance codes are assigned to indicate the levels of maintenance authorized to USE and REPAIR support items. The maintenance codes are entered in the third and fourth positions of the Uniform SMR Code format as follows:

(a) The maintenance code entered in the third position will indicate the lowest maintenance level authorized to remove, replace, and use the support item. The maintenance code entered in the third position will indicate one of the following levels of maintenance:

Code	Application/Explanation
C	Crew or operator maintenance performed within organizational maintenance.
O	Support item is removed, replaced, used at the organizational level.
F	Support item is removed, replaced, used at the direct support level.
H	Support item is removed, replaced, used at the general support level.
D	Support items that are removed, replaced, used at depot, mobile depot, specialized repair activity only.
I	Support item is removed, replaced, used by the direct support element of integrated direct support maintenance.

NOTE

Codes ((I)) and ((F)) will be considered the same by direct support units.

(b) The maintenance code entered in the fourth position indicates whether the item is to be repaired and identifies the lowest maintenance level with the capability to perform complete repair (i.e., all authorized maintenance functions). This position will contain one of the following maintenance codes.

Code	Application/Explanation
O	The lowest maintenance level capable of complete repair of the support item is the organizational level.
F	The lowest maintenance level capable of complete repair of the support item is the direct support level.
H	The lowest maintenance level capable of complete repair of the support item is the general support level.
D	The lowest maintenance level capable of complete repair of the support item is the depot level.
L	Repair restricted to designated specialized repair activity.
Z	Nonrepairable. No repair is authorized.
B	No repair is authorized. The item may be reconditioned by adjusting, lubricating etc., at the user level. No parts or special tools are procured for the maintenance of this item.

(3) Recoverability Code. Recoverability codes are assigned to support items to indicate the disposition action on unserviceable items. The recoverability code is entered in the fifth position of the Uniform SMR Code format as follows:

Recoverability Codes Definition

- Z - Nonreparable item. When unserviceable, condemn and dispose at the level indicated in position 3.
- O - Repairable item. When uneconomically repairable, condemn and dispose at organizational level.
- F - Repairable item. When uneconomically repairable, condemn and dispose at the direct support level.
- H - Repairable item. When uneconomically repairable, condemn and dispose at the general support level.
- D - Repairable item. When beyond lower level repair capability, return to depot. Condemnation and disposal not authorized below depot level.
- L - Repairable item. Repair, condemnation, and disposal not authorized below depot/specialized repair activity level.
- A - Item requires special handling or condemnation procedures because of specific reasons (i.e., precious metal content, high dollar value, critical material or hazardous material). Refer to appropriate manuals/directives for specific instructions.

c. National Stock Number. Indicates the National stock number assigned to the item and which will be used for requisitioning purposes.

d. Part Number. Indicates the primary number used by the manufacturer which controls the design and characteristics of the item by means of its engineering drawings, specifications, standards, and inspection requirements to identify an item or range of items.

NOTE

When a stock numbered item is requisitioned, the repair part received may have a different part number than the part being replaced.

e. Federal Supply Code for Manufacturer (FSCM). The FSCM is a 5-digit numeric code listed in SB 708-42 which is used to identify the manufacturer, distributor, or Government agency, etc.

f. Description. Indicates the Federal item name and, if required, a minimum description to identify the item. Items that are included in kits and sets are listed below the name of the kit or set with the quantity of each item in the kit or set indicated in the quantity incorporated in unit column. When the part to be used differs between serial numbers of the same model, the effective serial numbers are shown as the last line of the description. In the Special Tools List, the initial basis of issue (BOI) appears as the last line in the entry for each special tool, TMDE, and support equipment. When density of equipments supported exceeds density spread indicated in the basis of issue, the total authorization is increased accordingly.

g. Unit of Measure (U/M). Indicates the standard of the basic quantity of the listed item as used in performing the actual maintenance function. This measure is expressed by a two-character alphabetical abbreviation (e.g., ea, in, pr, etc).

When the unit of measure differs from the unit of issue the lowest unit of issue that will satisfy the required unit of measure will be requisitioned.

h. Quantity Incorporated in Unit. Indicates the quantity of the item used in the breakout shown on the illustration figure, which is prepared for a functional group, subfunctional group, or an assembly. A "V" appearing in this column indicates in lieu of a quantity indicates that no specific quantity is applicable, (e.g., shims, spacers, etc).

4. Special Information.

a. Bulk materials required to manufacture items are listed in the Bulk Material Group of this manual.

b. Detailed assembly instructions for items source coded to be assembled are found in TM 5-6115-596-14. Assembly components are listed immediately following the item to be assembled.

c. Repair parts kits appear as the last entries in the repair parts listing for the figure in which its parts are listed as repair parts.

d. The following publications refer to generator set:

TM 5-6115-596-14
Generator Set,
Gasoline Driven, 28V, D.C.

TM 5-2805-203-14
Engine, Gasoline

e. **USABLE ON CODE.** The usable on code appears in the lower right corner of the Description column (6) heading. Usable on codes appear on the first line of the applicable item description/nomenclature in the Description column. Identification of the usable on codes used in this manual are:

<u>Code</u>	<u>Used on</u>
A	Generator Sets, serial numbers 923-001 thru 923-553
B	Generator Sets, serial numbers 929001 thru 929-290

5. How to Locate Repair Parts.

a. When National Stock Number or Part Number is Unknown:

(1) First. Using the table of contents, determine the functional group within which the item belongs. This is necessary since illustrations are prepared for functional groups and listings are divided into the same groups.

(2) Second. Find the illustration covering the functional group to which the item belongs.

(3) Third. Identify the item on the illustration and note the illustration figure and item number of the repair part.

(4) Fourth. Using the Repair Parts Listing, find the figure and item number noted on the illustration.

b. When National Stock Number or Part Number is Known:

(1) First. Using the index of National Stock Numbers and Part Numbers, find the pertinent National stock number or part number. This index is in NIIN sequence followed by a list of part numbers in alphanumeric sequence, cross-referenced to the illustration figure number and item number.

(2) Second. After finding the figure and item number, locate the figure and item number in the repair parts list.

6. Abbreviations. (Not Applicable).

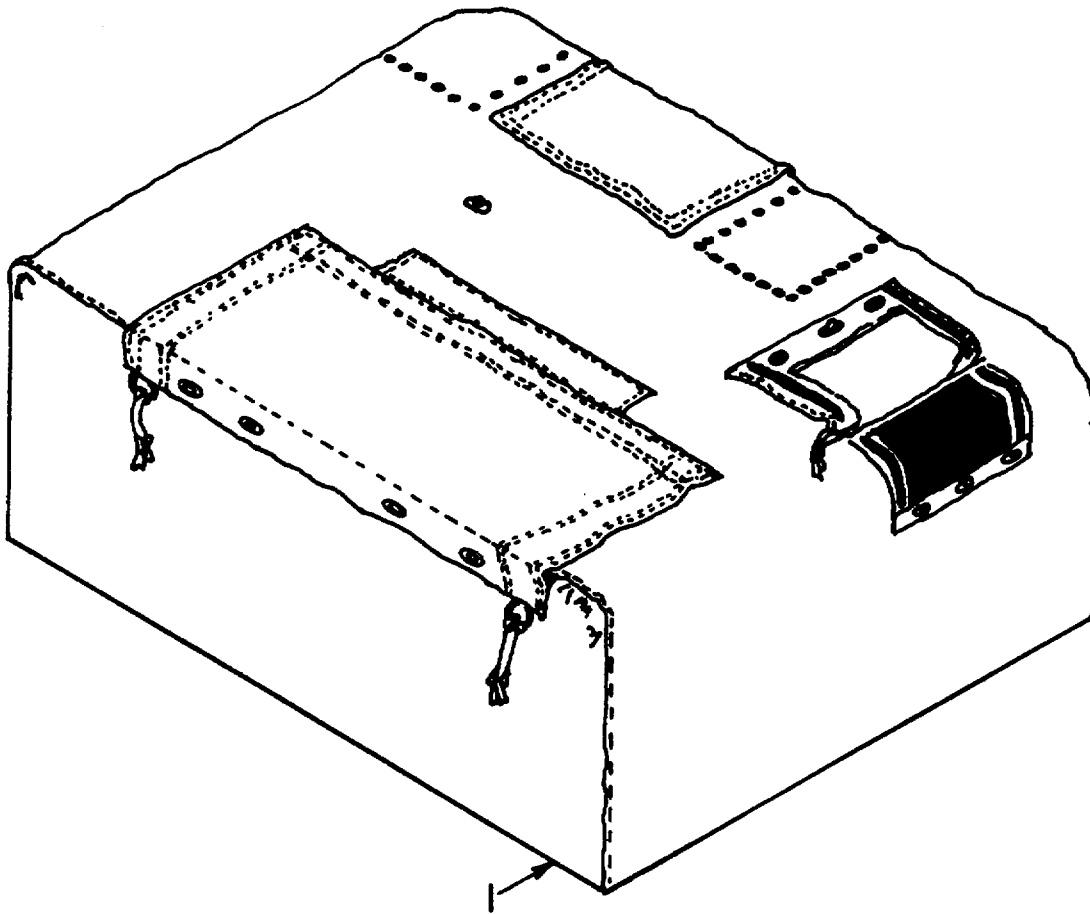


Figure 1. Generator cover

(1) ILLUSTRATION		(2)	(3)	(4)	(5)	(6)	(7)	(8)
(a) FIG NO.	(b) FIG NO.	SMR CODE	NATIONAL STOCK NUMBER	PART NUMBER	FSCM	DESCRIPTION USABLE ON CODES	U/M	QTY INC IN UNIT
1	1	XBOZZ		10919334	19207	GROUP 01: GENERATOR COVERS	EA	1
1	1	XBOZZ		10932720	19207	COVER, GENERATOR: GENERAL PURPOSE COVER, GENERATOR: LOW TEMPERATURE	EA	1

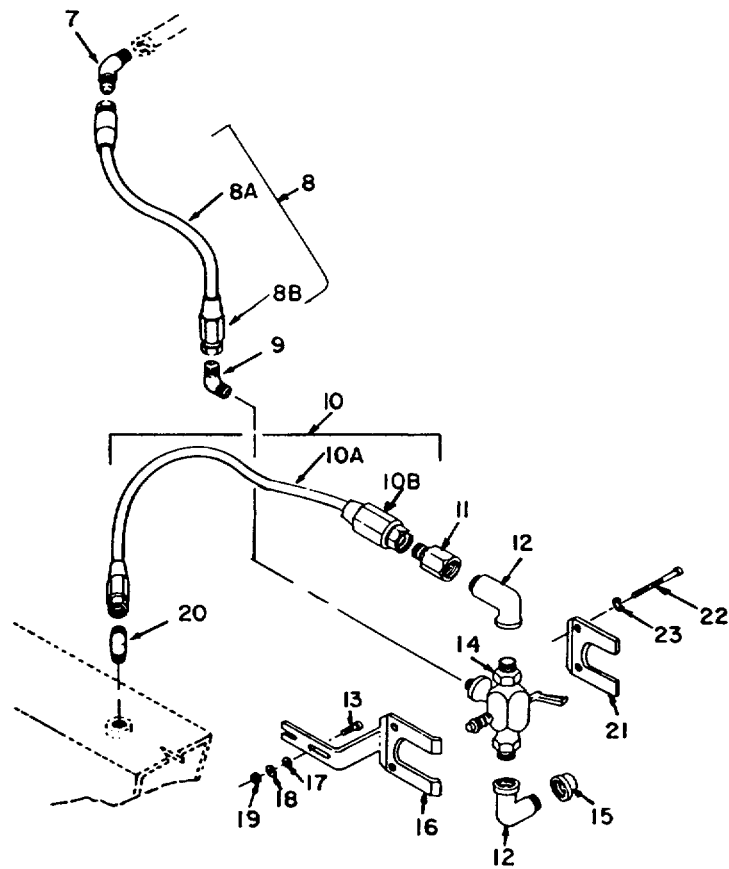
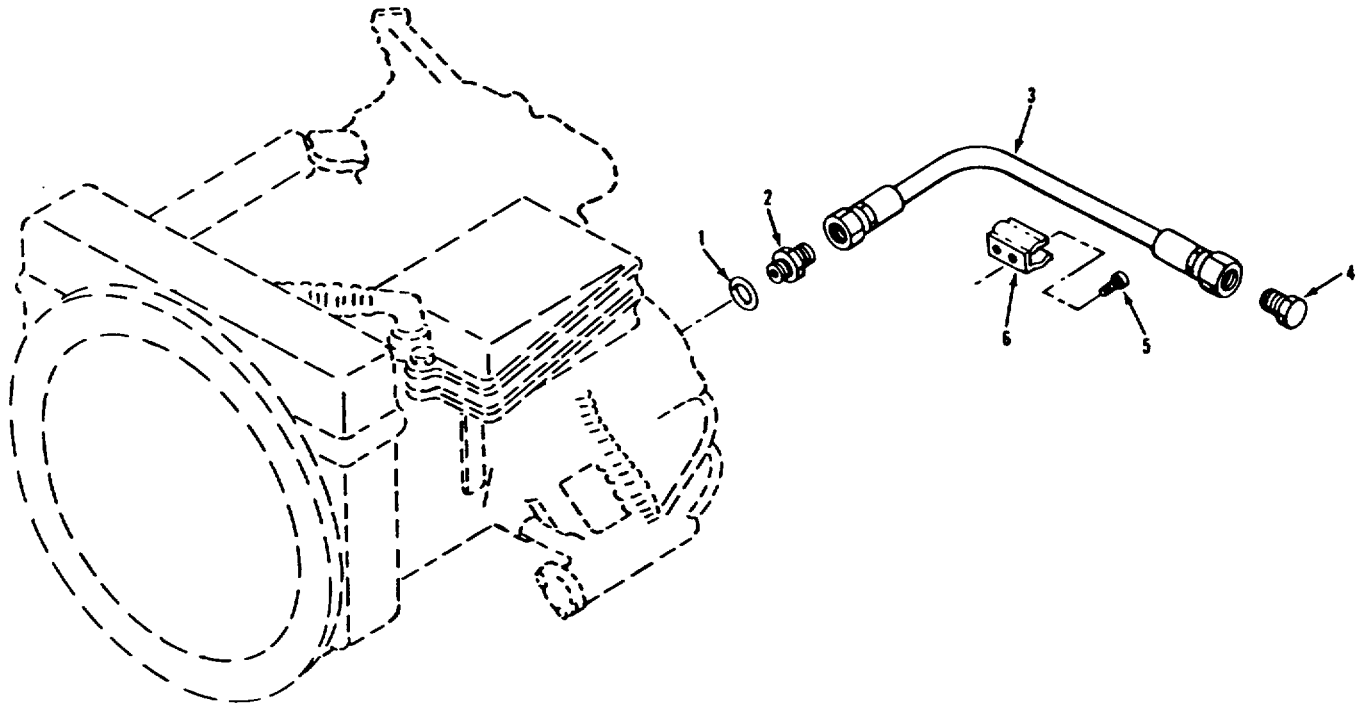


Figure 2. Lines, fittings and hoses.

(1) ILLUSTRATION		(2)	(3)	(4)	(5)	(6)	(7)	(8)
(a) FIG NO.	(b) ITEM NO.	SMR CODE	NATIONAL STOCK NUMBER	PART NUMBER	FSCM	DESCRIPTION USABLE ON CODE	U/M	QTY INC IN UNIT
						GROUP 02: LINES, FITTINGS AND HOSES		
2	1	PAOZZ	5330-00-988-0569	10919335	19207	GASKET: ENGINE DRAIN HOSE NIPPLE	EA	1
2	2	PAOZZ	4730-00-800-9869	MS24392-5	96906	NIPPLE, TUBE	EA	1
2	3	PAOZZ	4720-00-988-1166	MS28741-5-0100	96906	HOSE ASSEMBLY, NONMETALLIC: ENGINE DRAIN	EA	1
2	4	PAOZZ	4730-00-142-1831	AN806-5	88044	PLUG, MACHINE THREAD	EA	1
2	5	PAOZZ	5305-00-253-5616	MS21318-22	96906	SCREW, DRIVE: ENGINE DRAIN HOSE CLIP	EA	2
2	6	PAOZZ	5340-00-060-9029	MS17160-24	96906	CLIP, SPRIG TENSION: ENGINE DRAIN HOSE	EA	1
2	7	PAOZZ	4730-00-231-3959	MS20823-3	96906	ELBOW PIPE TO TUBE	EA	1
2	8	MFOZZ		MS28741-3-0070	96906	HOSE ASSEMBLY, NONMETALLIC: FILTER TO ENGINE	EA	1
2	8A	PAOZZ	4720-00-289-9202	MILH8794-3	81349	HOSE, RUBBER	FT	V
2	8B	PAOZZ	4730-00-842-2198	MS24587-3	96906	ADAPTER, STRAIGHT TUBE	EA	2
2	9	PAOZZ	4730-00-231-4008	MS20822-3	96906	ELBOW, PIPE TO TUBE	EA	1
2	10	MFOZZ		MS28741-4-0110	96906	HOSE ASSEMBLY, NONMETALLIC: TANK TO CONNECTOR	EA	1
2	10A	PAOZZ	4720-00-639-9907	MILH8794-4	81349	HOSE, RUBBER	FT	V
2	10B	PAOZZ	4730-00-842-2200	MS28740-4	96906	ADAPTER, STRAIGHT TUBE	EA	2
2	11	PAOZZ	4730-00-800-7570	MS51503A4	96906	ADAPTER, STRAIGHT PIPE	EA	1
2	12	PAOZZ	4730-00-053-0266	MS51952-1	96906	ELBOW, PIPE	EA	2
2	13	PAOZZ	5305-00-068-0501	MS35291-5	96906	SCREW, CAP, HEXAGON HEAD	EA	2
2	14	PAOZZ	4820-00-966-3810	13206E8471	97403	COCK, DRAIN: ENGINE FUEL	EA	1
2	15	PAOZZ	4730-00-203-3167	WW-P-521	81348	CAP, PIPE	EA	1
2	16			13216E5868	19207	BRACKET, FUEL FILTER	EA	1
2	17	PAOZZ	5310-00-809-4058	MS27183-10	96906	WASHER, FLAT	EA	2
2	18	PAOZZ	5310-00-582-5965	MS35338-44	96906	WASHER, LOCK	EA	2
2	19	PAOZZ	5310-00-761-6882	MS51967-2	96906	NUT PLAIN, HEXAGON	EA	2
2	20	PAOZZ	4730-00-231-4009	MS20822-4	96906	ELBOW, PIPE TO TUBE	EA	1
2	21	XBOZZ		13216E5869	19207	BRACKET, FUEL FILTER	EA	1
2	22	XBOZZ		MS35225-34	96906	SCREW, MACHINE	EA	2
2	23	XBOZZ		MS35338-41	96906	WASHER, LOCK	EA	2

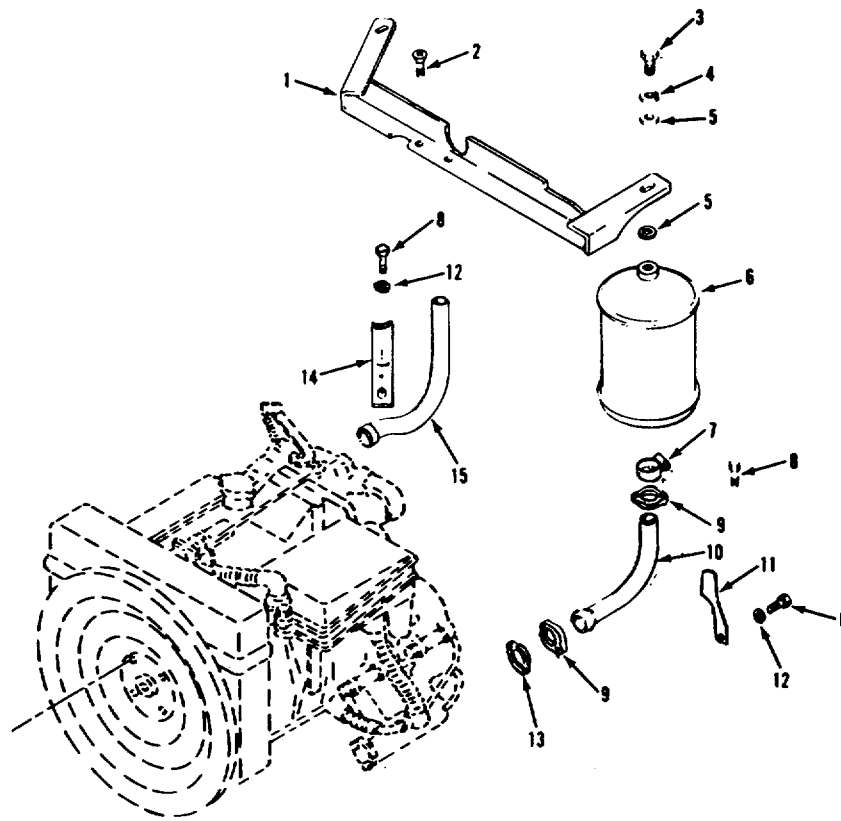


Figure 3. Muffler and pipes.

(1) ILLUSTRATION		(2)	(3)	(4)	(5)	(6)	(7)	(8)
(a) FIG NO.	(b) ITEM NO.	SMR CODE	NATIONAL STOCK NUMBER	PART NUMBER	FSCM	DESCRIPTION USABLE ON CODE	U/M	QTY INC IN UNIT
						GROUP 03: MUFFLER AND PIPES		
3	1	XBOZZ		10919489	19207	BRACKET, ENGINE MOUNT	EA	1
3	2	PAOZZ	5305-00-958-5252	MS35190-304	96906	SCREW, MACHINE	EA	2
3	3	PAOZZ	5305-00-269-3209	MS90725-58	96906	SCREW, CAP, HEXAGON HEAD	EA	2
3	4	PAOZZ	5310-00-637-9541	MS35338-46	96906	WASHER, LOCK	EA	2
3	5	PAOZZ	5310-00-080-6004	MS27183-14	96906	WASHER, FLAT	EA	4
3	6	PAOZZ	2990-00-981-4929	10919324	19207	MUFFLER, EXHAUST	EA	2
3	7	PAOZZ	4730-00-908-3194	MS35842-11	96906	CLAMP, HOSE	EA	2
3	8	PAOZZ	5305-00-068-0506	MS90726-6	96906	SCREW, CAP, HEXAGON HEAD	EA	6
3	9	PAOZZ	2805-00-981-4943	10919323	19207	FLANGE: EXHAUST PIPE	EA	4
3	10	PAOZZ	2990-00-981-4938	10919313	19207	PIPE, EXHAUST	EA	1
3	11	PAOZZ	2990-00-881-1037	10941126	19207	BRACKET, MUFFLER, EXHAUST	EA	1
3	12	PAOZZ	5310-00-809-4058	MS27183-10	96906	WASHER, FLAT	EA	2
3	13	PAOZZ	5330-00-797-3506	9786E50-2	97403	GASKET: EXHAUST MANIFOLD	EA	2
3	14	PAOZZ	2920-00-109-4181	10919309	19207	BRACKET, EXHAUST PIPE	EA	1
3	15	PAOZZ	2990-00-981-4937	10919312	19207	PIPE, EXHAUST	EA	1

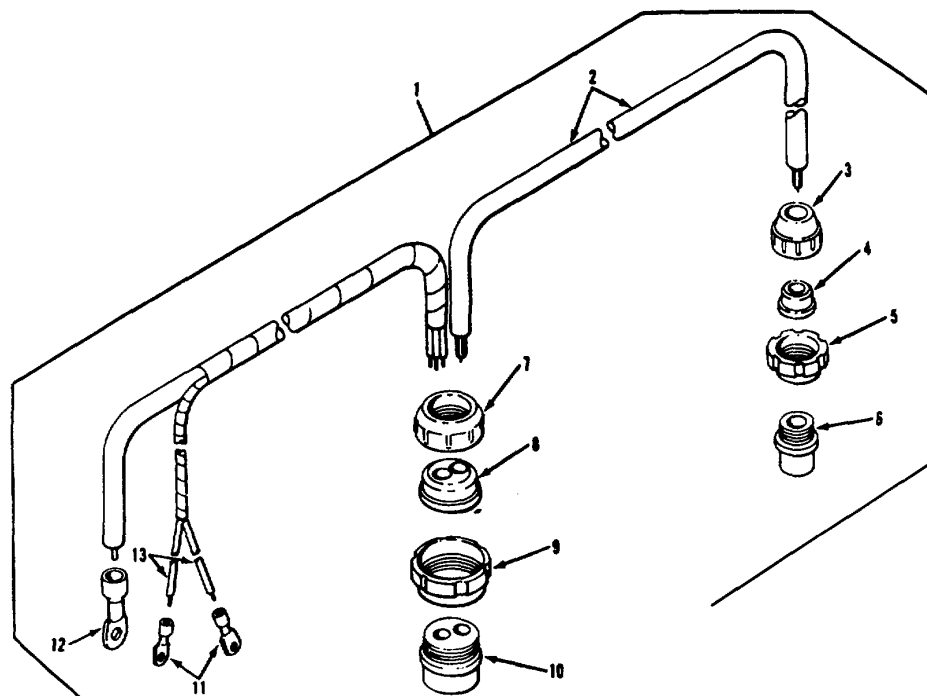


Figure 4. Generator to regulator wiring harness.

(1) ILLUSTRATION		(2)	(3)	(4)	(5)	(6)	(7)	(8)
(a) FIG NO.	(b) ITEM NO.	SMR CODE	NATIONAL STOCK NUMBER	PART NUMBER	FSCM	DESCRIPTION USABLE ON CODE	U/M	QTY INC IN UNIT
						GROUP 04: WIRING HARNESS		
4	1	PBFFF	2590-00-981-4945	10919316	19207	WIRING HARNESS, BRANCHED: GENERATOR TO REGULATOR	EA	1
4	2	MFFZZ		M13486-1-14	81349	WIRE, ELECTRICAL	FT	V
4	3	PAOZZ	5935-00-333-9414	7723308	19207	NUT, BUSHING, RETAINER	EA	1
4	4	PAOZZ	5365-00-318-8184	8376776	19207	BUSHING, RUBBER	EA	1
4	5	PAOZZ	5310-00-655-9860	8701325	19207	NUT, SLEEVE	EA	3
4	6	PAOZZ	5935-00-686-9374	8724242	19207	CONNECTOR, PLUG, ELECTRICAL	EA	1
4	7	PAOZZ	5935-00-729-8217	7388355	19207	NUT, BUSHING RETAINER	EA	1
4	8	PAOZZ	5325-00-930-5972	8764828	19207	GROMMET, RUBBER	EA	1
4	9	PAOZZ	5310-00-678-4228	8701249	19207	NUT, PLAIN, ROUND	EA	1
4	10	PAOZZ	5935-00-686-2604	8724405	19207	CONNECTOR, PLUG, ELECTRICAL	EA	1
4	11	PAOZZ	5940-00-705-6708	7056708	19207	TERMINAL, LUG	EA	2
4	12	PAOZZ	5940-00-705-6732	7056732	19207	TERMINAL, LUG	EA	1
4	13	MFFZZ		M13486-1-5	81349	WIRE, ELECTRICAL	FT	V

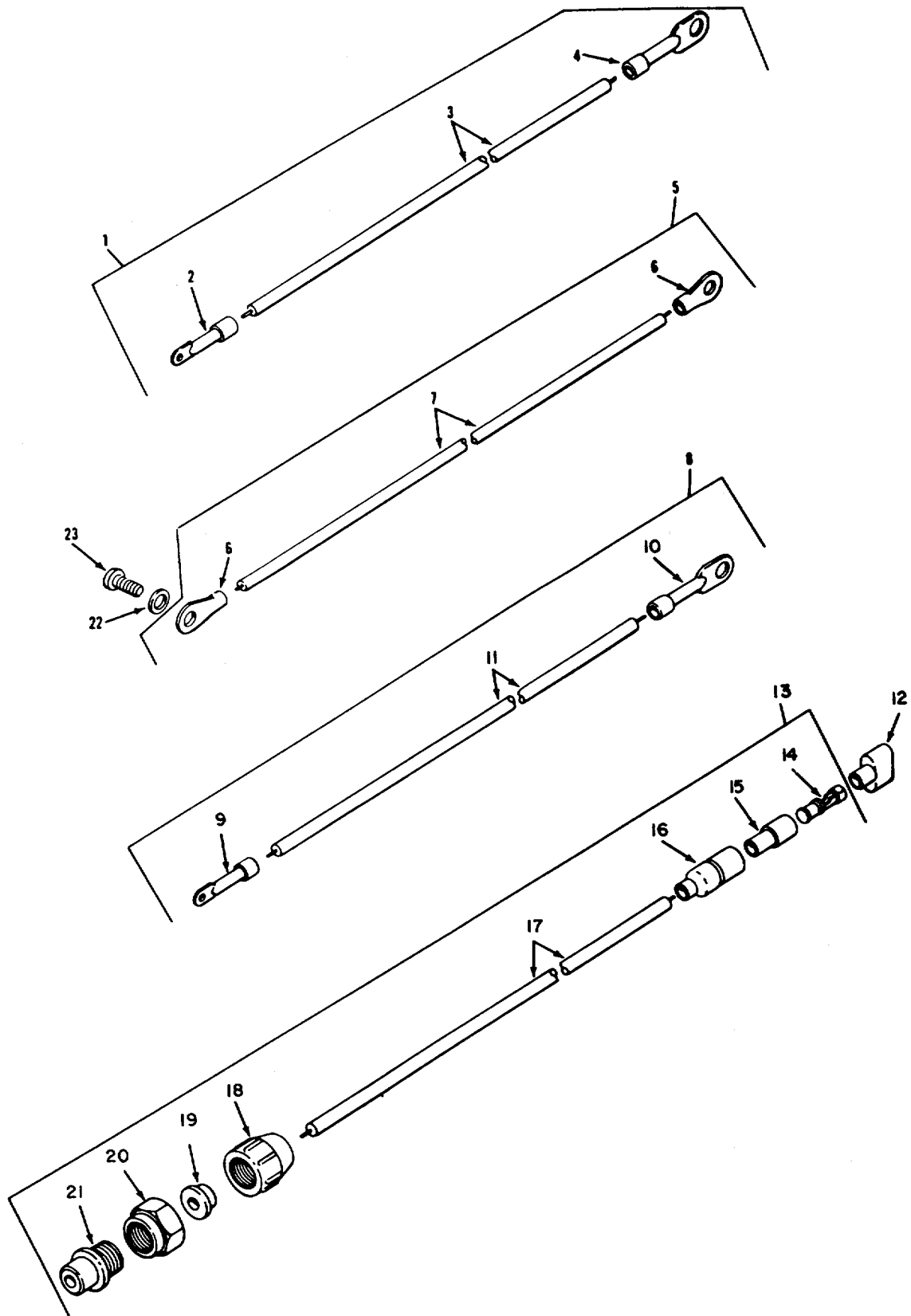


Figure 5. Electrical leads.

(1) ILLUSTRATION		(2)	(3)	(4)	(5)	(6)	(7)	(8)
(a) FIG NO.	(b) ITEM NO.	SMR CODE	NATIONAL STOCK NUMBER	PART NUMBER	FSCM	DESCRIPTION USABLE ON CODE	U/M	QTY INC IN UNIT
						GROUP 05: ELECTRICAL LEADS		
5	1	PAOOO	2920-00-981-4940	10919319	19207	LEAD, ELECTRICAL: GENERATOR TO FRAME GROUND	EA	1
5	2	PAOZZ	5940-00-705-6708	7056708	19207	TERMINAL, LUG	EA	1
5	3	MFFZZ		M13486-1-5	81349	WIRE, ELECTRICAL	FT	V
5	4	PAOZZ	5940-00-705-6711	7056711	19207	TERMINAL, LUG	EA	1
5	5	PAOOO	2590-00-981-8613	10919322	19207	LEAD, ELECTRICAL: GENERATOR GROUND	EA	1
5	6	PAOZZ	5940-00-114-1300	MS20659-5	96906	TERMINAL, LUG	EA	2
5	7	MFFZZ		QQB575-34	81349	BRAID, WIRE	FT	V
5	8	PAOOO	2590-00-981-4944	10919318	19207	LEAD, ELECTRICAL: SOLENOID RELAY GROUND	EA	1
5	9	PAOZZ	5940-00-705-6708	7056708	19207	TERMINAL, LUG	EA	1
5	10	PAOZZ	5940-00-705-6710	7056710	19207	TERMINAL, LUG	EA	1
5	11	MFFZZ		M13486-1-5	81349	WIRE, ELECTRICAL	FT	V
5	12	PAOZZ	5935-00-615-9984	7982404	19207	JACK, TIP	A	EA 1
5	13	PAOOO	2590-00-981-6868	10919317	19207	LEAD, ELECTRICAL	EA	1
5	14	PAOZZ	1015-00-798-2997	7982997	19207	TERMINAL, SOLDERED	EA	1
5	15	PAOZZ	5970-00-833-8562	8338562	19207	INSULATOR, BUSHING	EA	1
5	16	PAOZZ	5935-00-833-8561	8338561	19207	SHELL, ELECTRICAL CONNECTOR	EA	1
5	17	MFFZZ		M13486-1-5	81349	WIRE, ELECTRICAL	A	FT V
5	18	PAOZZ	5935-00-333-3088	7723306	19204	NUT, BUSHING RETAINER	A	EA 1
5	19	PAOZZ	5975-00-697-6991	7527643	21450	NUT, COUPLING, ELECTRICAL	A	EA 1
5	20	PAOZZ	5365-00-772-2343	7722343	19207	BUSHING, RUBBER	A	EA 1
5	21	PAOZZ	5935-00-686-2610	8724199	19207	CONNECTOR, PLUG, ELECTRICAL	A	EA 1
5	22	PAOZZ	5310-00-809-8544	MS27183-7	96906	WASHER, FLAT	EA	1
5	23	PAOZZ	5305-00-984-6191	MS35225-43	96906	SCREW, MACHINE	EA	1

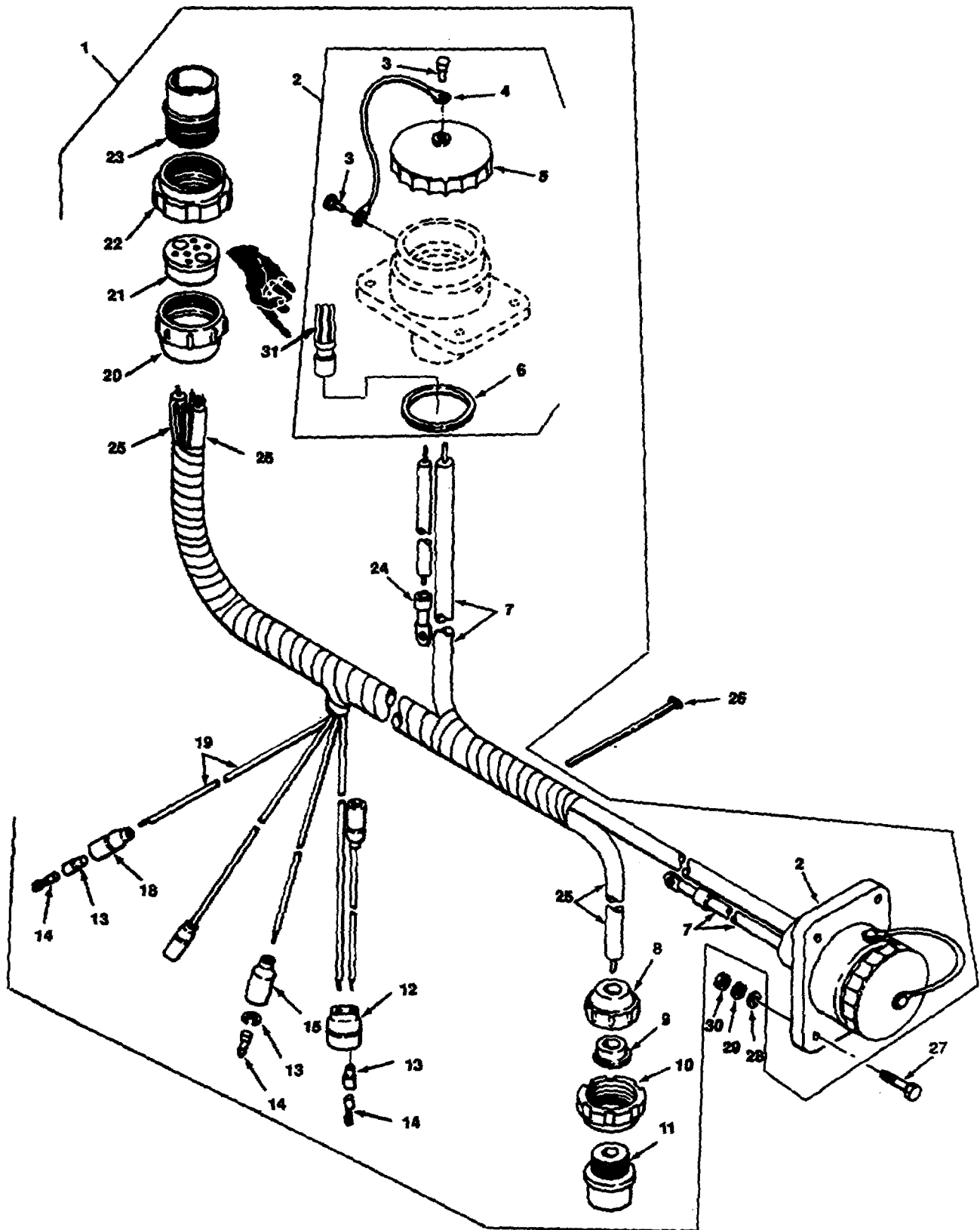


Figure 6. Slave receptacle harness.

(1) ILLUSTRATION		(2)	(3)	(4)	(5)	(6)	(7)	(8)
(a) FIG NO.	(b) ITEM NO.	SMR CODE	NATIONAL STOCK NUMBER	PART NUMBER	FSCM	DESCRIPTION USABLE ON CODE	U/M	QTY INC IN UNITS
						GROUP 06: SLAVE RECEPTACLE HARNESS		
6	1	PBFFF	2590-00-981-4946	10919315	19207	WIRING HARNESS, BRANCHED	A EA	1
6	2	PAOFF	5935-00-901-8128	10919299	19207	CONNECTOR, RECEPTACLE	A EA	2
6	3	PAOZZ	5315-00-771-5376	7715376	19207	PIN, SHOULDER, HEADED	A EA	3
6	4	PAOZZ	4010-00-076-7079	10941130	19207	CABLE, FUEL CAP RETAINER	A EA	1
6	5	PAOZZ	5935-00-179-3441	7720869	19207	COVER CONNECTOR	A EA	1
6	6	PAOZZ	5935-00-772-0874	7720874	19207	GASKET, RECEPTACLE	A EA	1
6	7	MFFZZ		M13486-1-12	81349	WIRE, ELECTRICAL	A FT	V
6	8	PAOZZ	5935-00-333-9414	7723308	19207	NUT, BUSHING RETAINER	A EA	1
6	9	PAOZZ	5365-00-318-8184	8376776	19207	BUSHING, RUBBER	A EA	1
6	10	PAOZZ	5310-00-655-9860	8701325	19207	NUT, SLEEVE	A EA	1
6	11	PAOZZ	5935-00-686-9374	8724242	19207	CONNECTOR, PLUG, ELECTRICAL	A EA	1
6	12	PAOZZ	5935-00-677-4444	7064586	19207	INSERT PLUG, ELECTRICAL	A EA	1
6	13	PAOZZ	5970-00-833-8562	8338562	19207	INSULATOR BUSHING	A EA	5
6	14	PAOZZ	1015-00-798-2997	7982997	19207	TERMINAL, SOLDERED	A EA	5
6	15	PAOZZ	5935-00-572-9180	8338566	19207	SHELL, ELECTRICAL CONNECTOR	A EA	1
6	16	PAOZZ	5310-00-833-8567	8339567	19207	WASHER, SLOTTED	A EA	1
6	17	PAOZZ	5999-00-057-2929	M27148-2	96906	CONTACT, ELECTRICAL	A EA	1
6	18	PAOZZ	5935-00-833-8561	8338561	19207	SHELL, ELECTRICAL CONNECTOR	A EA	3
6	19	MFFZZ		M13486-1-5	81349	WIRE, ELECTRICAL	A FT	V
6	20	PAOZZ	5935-00-729-8217	7388355	19207	NUT, BUSHING RETAINER	A EA	1
6	21	PAOZZ	5325-00-930-5972	8764828	19207	GROMMET, RUBBER	A EA	1
6	22	PAOZZ	5310-00-678-4228	8701249	19207	NUT PLAIN, ROUND	A EA	1
6	23	PAOZZ	5935-00-686-4007	8724406	19207	CONNECTOR, PLUG ELECTRICAL	A EA	1
6	24	PAOZZ	5940-00-705-6730	7056730	19207	TERMINAL, LUG	A EA	2
6	25	MFFZZ		M13486-1-14	81349	WIRING, ELECTRICAL	A FT	V
6	26	PAOZZ	5975-00-074-2072	MS17821-1-9	96906	STRAP, RETAINING	A EA	4
6	27	PAOZZ	5305-00-225-3840	MS90725-7	96906	SCREW, CAP, HEXAGON HEAD	A EA	B
6	28	PAOZZ	5305-00-809-4058	MS27183-10	96906	WASHER, FLAT	A EA	8
6	29	PAOZZ	5310-00-582-5965	MS35338-44	96906	WASHER, LOCK	A EA	8
6	30	PAOZZ	5310-00-761-6882	MS51967-2	96906	NUT, PLAIN, HEXAGON	A EA	8
6	31	PAOZZ	5999-00-909-3751	7716082	19207	CONTACT	A EA	2

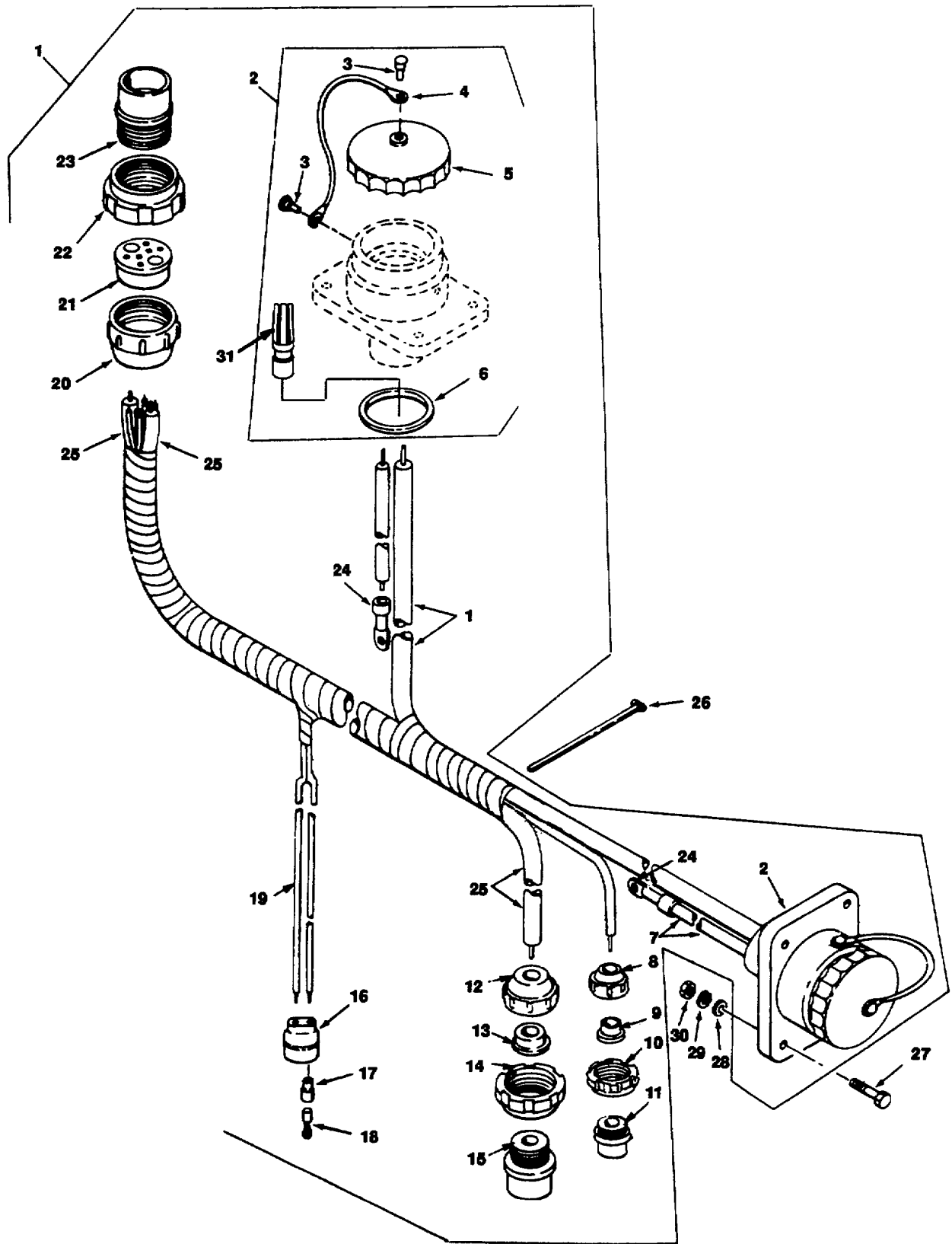


Figure 6A. Slave receptacle harness.

(1) ILLUSTRATION		(2)	(3)	(4)	(5)	(6)	(7)	(8)
(a) FIG NO.	(b) ITEM NO.	SMR CODE	NATIONAL STOCK NUMBER	PART NUMBER	FSCM	DESCRIPTION USABLE ON CODE	U/M	QTY INC IN UNITS
6A	1			12253407	19207	WIRING HARNESS, BRANCHED	B EA	1
6A	2	PAOFF	5935-00-901-8128	10919299	19207	CONNECTOR, RECEPTACLE	B EA	2
6A	3	PAOZZ	5315-00-771-5376	7715376	19207	PIN, SHOULDER, HEADED	B EA	3
6A	4	PAOZZ	4010-00-076-7079	10941130	19207	CABLE, FUEL CAP RETAINER	B EA	1
6A	5	PAOZZ	5935-00-179-3441	7720869	19207	COVER, CONNECTOR	B EA	1
6A	6	PAOZZ	5935-00-772-0874	7720874	19207	GASKET, RECEPTACLE	B EA	1
6A	7	MFFZZ		M13486-1-12	81349	WIRE, ELECTRICAL	B FT	V
6A	8	PAOZZ	5935-00-333-3088	7723306	19207	NUT BUSHING RETAINER	B EA	1
6A	9	PAOZZ	5365-00-772-2343	7722343	19207	BUSHING RUBBER	B EA	1
6A	10	PAOZZ	5975-00-522-7125	7527643	19207	NUT SLEEVE	B EA	1
6A	11	PAOZZ	5935-00-686-2610	8724199	19207	CONNECTOR, PLUG, ELECTRICAL	B EA	1
6A	12	PAOZZ	5935-00-333-9414	7723308	19207	NUT, BUSHING RETAINER	B EA	1
6A	13	PAOZZ	5365-00-318-8184	8376776	19207	BUSHING, RUBBER	B EA	1
6A	14	PAOZZ	5310-00-655-9860	8701325	19207	NUT, SLEEVE	B EA	1
6A	15	PAOZZ	5935-00-686-9374	8724242	19207	CONNECTOR PLUG, ELECTRICAL	B EA	1
6A	16	PAOZZ	5935-00-677-4444	7064586	19207	INSERT PLUG, ELECTRICAL	B EA	1
6A	17	PAOZZ	5970-00-833-8562	8338562	96906	INSULATOR, BUSHING	B EA	2
6A	18	PAOZZ	1015-00-798-2997	7982997	19207	TERMINAL SOLDERED	B EA	2
6A	19	MFFZZ		M13486-1-5	81349	WIRE, ELECTRICAL	B FT	V
6A	20	PAOZZ	5935-00-729-8217	7388355	19207	NUT, BUSHING RETAINER	B EA	1
6A	21	PAOZZ	5325-00-930-5972	8764828	19207	GROMMET, RUBBER	B EA	1
6A	22	PAOZZ	5310-00-678-4228	8701249	19207	NUT, PLAIN, ROUND	B EA	1
6A	23	PAOZZ	5935-00-686-4007	8724406	19207	CONNECTOR, PLUG, ELECTRICAL	B EA	1
6A	24	PAOZZ	5940-00-705-6730	7056730	19207	TERMINAL LUG	B EA	2
6A	25	MFFZZ		M13486-1-14	81349	WIRING, ELECTRICAL	B FT	V
6A	26	PAOZZ	5975-00-074-2072	MS17821-1-9	96906	STRAP, RETAINING	B EA	4
6A	27	PAOZZ	5305-00-225-3840	MS90725-7	96906	SCREW, CAP, HEXAGON HEAD	B EA	8
6A	28	PAOZZ	5305-00-809-4058	MS27183-10	96906	WASHER, FLAT	B EA	8
6A	29	PAOZZ	5310-00-582-5965	MS35338-44	96906	WASHER, LOCK	B EA	8
6A	30	PAOZZ	5310-00-761-6882	MS51967-2	96906	NUT PLAIN, HEXAGON	B EA	8
6A	31	PAOZZ	5999-00-909-3751	7716082	19207	CONTACT	B EA	2

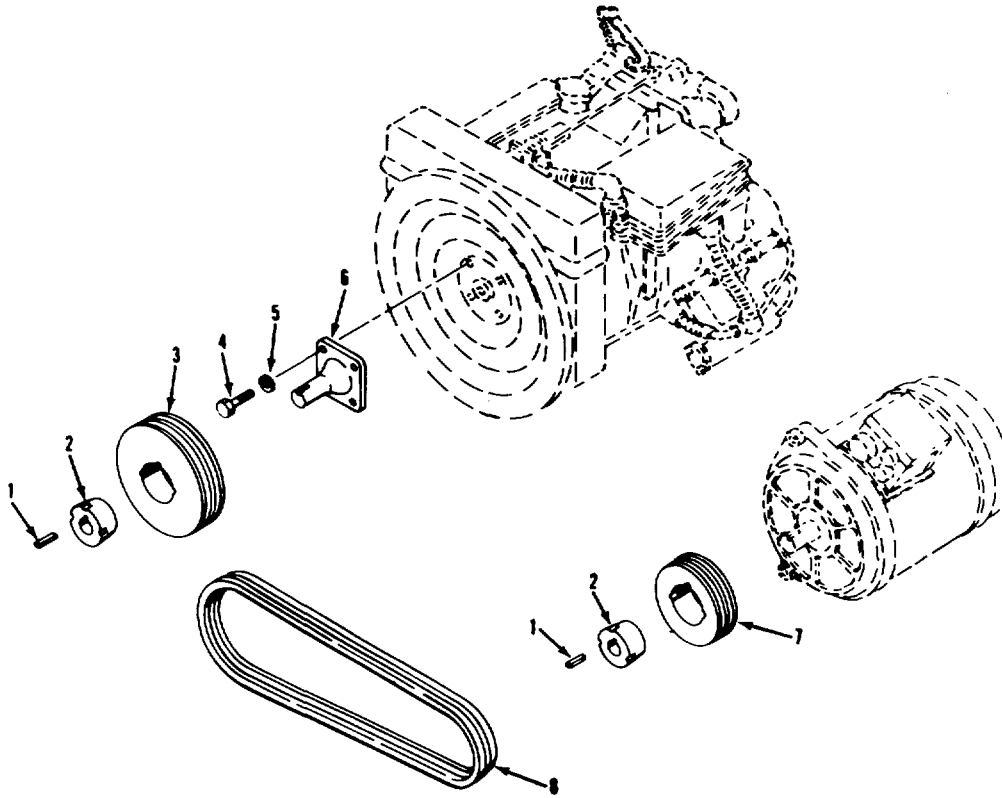


Figure 7. Drive belts.

(1) ILLUSTRATION		(2)	(3)	(4)	(5)	(6)	(7)	(8)
(a) FIG NO.	(b) ITEM NO.	SMR CODE	NATIONAL STOCK NUMBER	PART NUMBER	FSCM	DESCRIPTION USABLE ON CODE	U/M	QTY INC IN UNIT
						GROUP 07: DRIVE BELTS		
7	1	POFZZ	5315-00-990-2630	MS20066-252	96906	KEY MACHINE	EA	2
7	2	POFZZ	5365-00-775-5698	8712164	19207	BUSHING, TAPERED: ENGINE PULLEY	EA	2
7	3	POFZZ	3020-00-068-0227	10941132	19207	PULLEY GROOVED: ENGINE	EA	1
7	4	POFZZ	5306-00-225-9088	MS35298-33	96906	BOLT, MACHINE	EA	4
7	5	POFZZ	5310-00-407-9566	MS35338-45	96906	WASHER, LOCK	EA	4
7	6	POFZZ	2920-00-981-4939	10919311	19207	ADAPTER, GENERATOR PULLEY	EA	1
7	7	POFZZ	3020-00-068-0226	10941131	19207	PULLEY, GROOVED: GENERATOR	EA	1
7	8	PAOZZ	3030-00-983-2873	MS51065-48-2	96906	BELT, V. MATCHED SET: STARTER- GENERATOR (CONSISTS OF 2 MS51065-48 BELTS).	EA	1

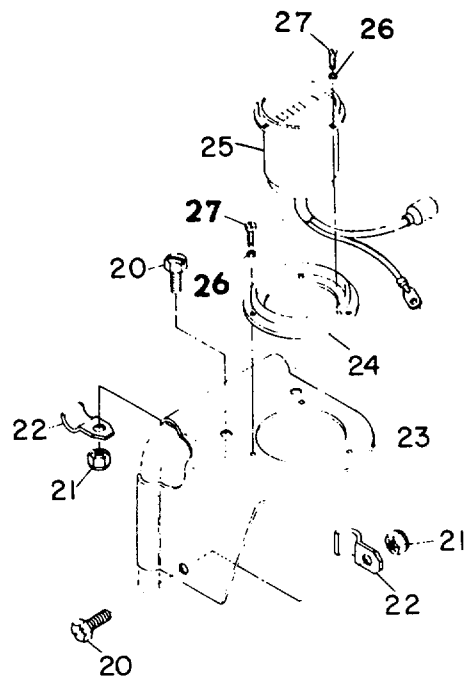
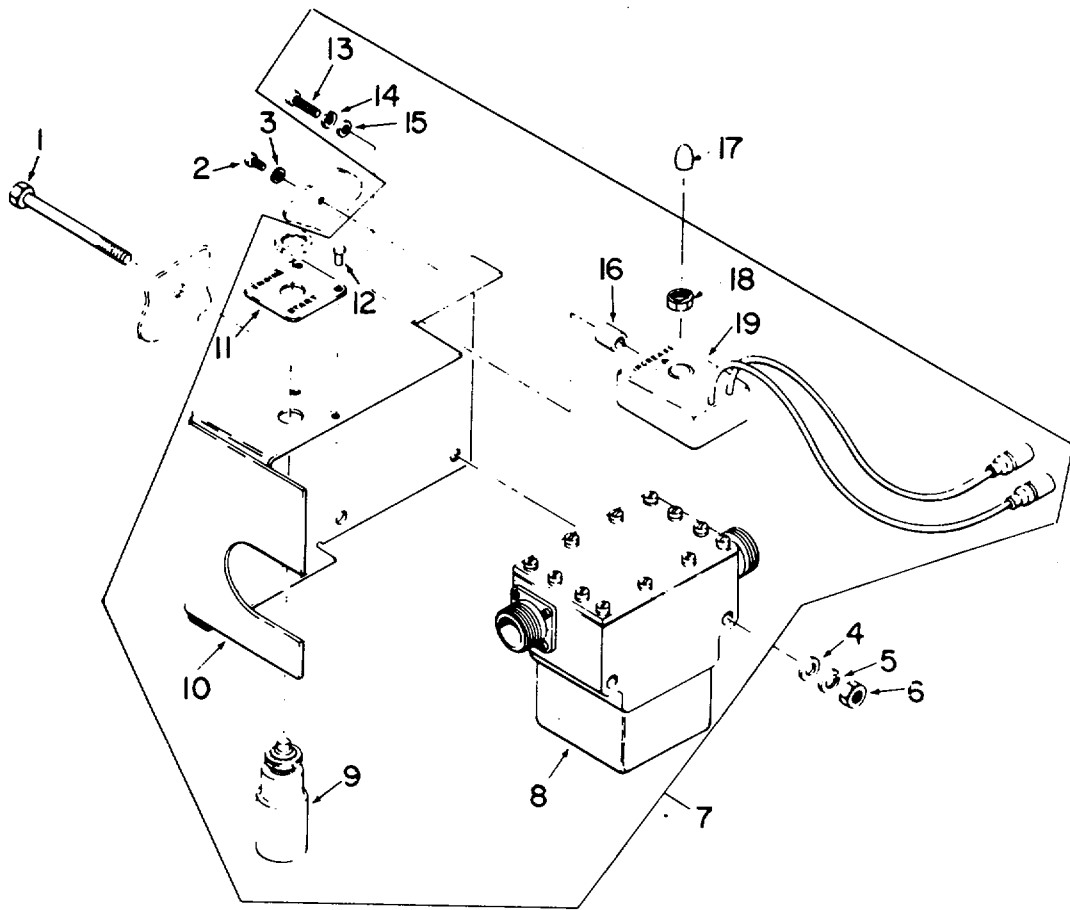


Figure 8. Generator control panel.

(1) ILLUSTRATION		(2)	(3)	(4)	(5)	(6)	(7)	(8)
(a) FIG NO.	(b) ITEM NO.	SMR CODE	NATIONAL STOCK NUMBER	PART NUMBER	FSCM	DESCRIPTION USABLE ON CODE	U/M	QTY INC IN UNIT
						GROUP 08: GENERATOR CONTROL PANEL		
8	1	PAOZZ	5306-00-225-8511	MS90725-47	96906	BOLT, MACHINE	A EA	2
8	2	PAOZZ	5305-00-984-6212	MS35225-65	96906	SCREW, MACHINE	A EA	1
8	3	PAOZZ	5310-00-809-8546	MS27183-8	96906	WASHER, FLAT	A EA	3
8	4	PAOZZ	5310-00-081-4219	MS27183-12	96906	WASHER, FLAT	A EA	1
8	5	PAOZZ	5310-00-407-9566	MS35338-45	96906	WASHER, LOCK	A EA	2
8	6	PAOZZ	5310-00-880-7744	MS51967-5	96906	NUT, PLAIN, HEXAGON	A EA	2
8	7	PBFFF		10919303	19207	CONTROL PANEL ASSEMBLY	A EA	1
8	8	PAFZZ	2590-00-083-0266	10894803	19207	RELAY, SOLENOID	A EA	1
8	9	PAOZZ	2920-00-781-1953	11640178	19207	SWITCH, ENGINE START	A EA	1
8	10	XBFZZ		10919304	19207	PANEL	A EA	1
8	11	PAOZZ	9905-00-051-8835	10919350	19207	PLATE, INSTRUCTION	A EA	1
8	12	PAOZZ	5320-00-954-9568	MS20604AD4W3	96906	RIVET, BLIND	A EA	2
8	13	PAFZZ	5305-00-993-1851	MS35206-267	96906	SCREW, MACHINE	A EA	2
8	14	PAFZZ	5310-00-045-3296	MS35338-43	96906	WASHER, LOCK	A EA	2
8	15	PAFZZ	5310-00-809-8546	MS27183-8	96906	WASHER, FLAT	A EA	2
8	16	PAFZZ	5365-00-142-7013	10919333	19207	SPACER	A EA	1
8	17	PAOZZ	5310-00-059-9277	MS24680-67	96906	NUT, SWITCH CAP	A EA	1
8	18	PAOZZ	5310-00-640-9613	AN6227-7	21450	PACKING, PREFORMED	A EA	1
8	19	PAFZZ	2920-00-679-4721	8724324	19207	RESISTOR, VARIABLE	A EA	1
8	20	XBFZZ		M590725-60	96906	SCREW, CAP, HEXAGON HEAD	A EA	3
8	21	XBFZZ		MS51922-17	96906	NUT, SELF LOCKING	A EA	3
8	22	XBFZZ		11661294	19207	STRAP, RETAINING	A EA	3
8	23	XBFZZ	6115-01-038-9075	11661295	19207	BRACKET, MOUNTING	A EA	1
8	24	PAFZZ	4310-00-678-6755	J-4487-1	76005	DAMPENER	A EA	1
8	25	XBFZZ	6645-01-035-7289	11646967	19207	METER ASSY, TIME TOTAL	A EA	1
8	26	XBFZZ		MS35333-37	96906	WASHER, LOCK	A EA	6
8	27	XBFZZ		MS35206-23	96906	SCREW, MACHINE	A EA	6

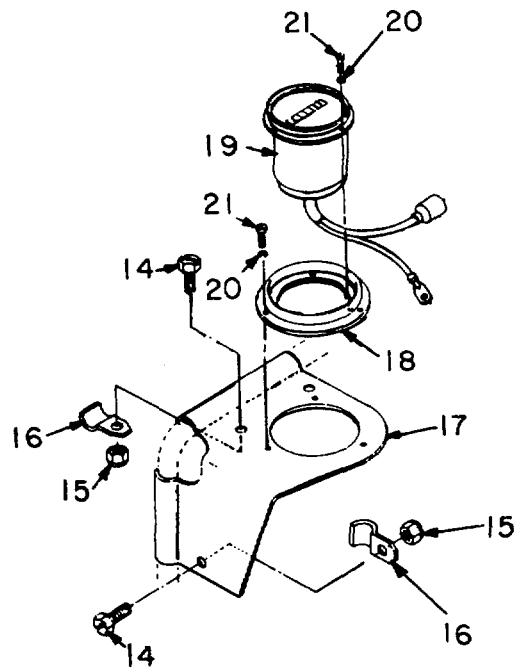
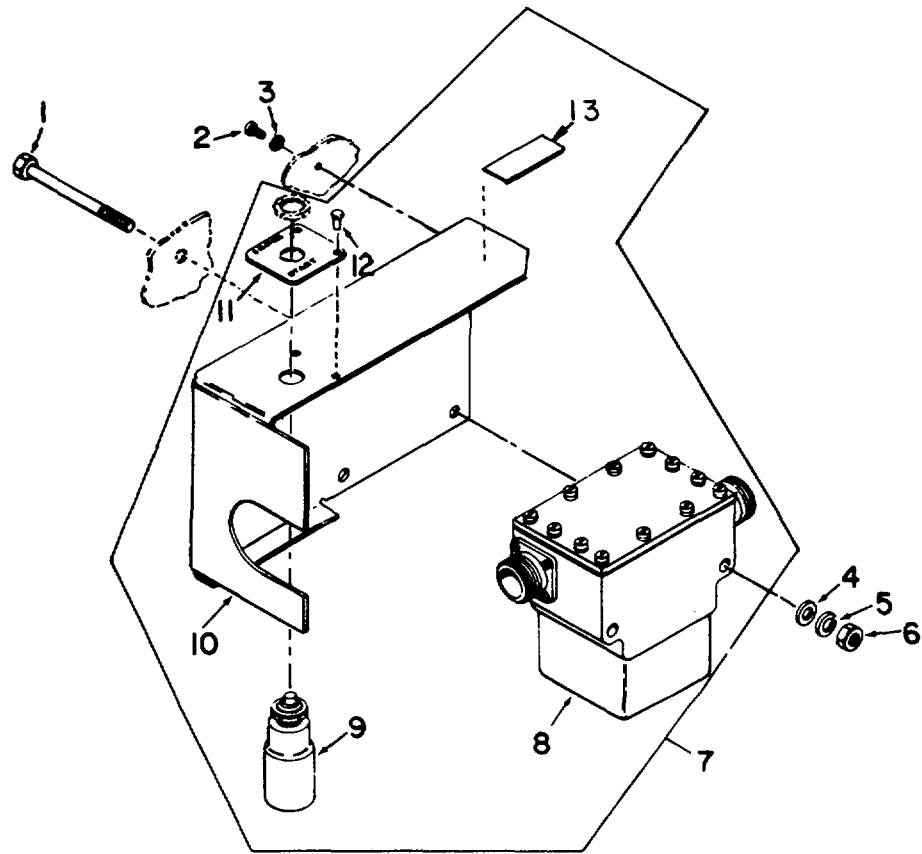


Figure 8 A. Generator control panel.

(1) ILLUSTRATION		(2)	(3)	(4)	(5)	(6)	(7)	(8)
(a) FIG NO.	(b) ITEM NO.	SMR CODE	NATIONAL STOCK NUMBER	PART NUMBER	FSCM	DESCRIPTION USABLE ON CODE	U/M	QTY INC IN UNIT
						GROUP 08: GENERATOR CONTROL PANEL		
8A	1	PAOZZ	5306-00-225-8511	MS35291-47	96906	BOLT, MACHINE	B EA	2
8A	2	PAOZZ	5305-00-984-6212	MS35225-65	96906	SCREW, MACHINE	B EA	1
8A	3	PAOZZ	5310-00-809-8546	MS27183-8	96906	WASHER, FLAT	B EA	3
8A	4	PAOZZ	5310-00-081-4219	MS27183-12	96906	WASHER, FLAT	B EA	1
8A	5	PAOZZ		MS35338-26	96906	WASHER, LOCK	B EA	2
8A	6	PAOZZ		MS35690-502	96906	NUT, PLAIN, HEXAGON	B EA	2
8A	7	PBFFF		10919303	19207	CONTROL PANEL ASSEMBLY	B EA	1
8A	8	PAFZZ	2590-00-083-0266	10894808	19207	RELAY, SOLENOID	B EA	1
8A	9	PAOZZ	2920-00-781-1953	8389470	19207	SWITCH, ENGINE START	B EA	1
8A	10	XBFZZ		10919304	19207	PANEL ASSEMBLY	B EA	1
8A	11	PAOZZ	9905-00-051-8835	10919350	19207	PLATE, INSTRUCTION	B EA	1
8A	12	PAOZZ	5320-00-954-9568	MS20604AD4W3	96906	RIVET, BLIND	B EA	2
8A	13			12268611	19207	PLATE, IDENTIFICATION	B EA	2
8A	14	XBFZZ		MS90725-60	96906	SCREW, CAP, HEXAGON HEAD	B EA	3
8A	15	XBFZZ		MS51922-17	96906	NUT, SELF LOCKING	B EA	3
8A	16	XBFZZ		11661294	19207	STRAP, RETAINING	B EA	3
8A	17	XBFZZ		11661295	19207	BRACKET, MOUNTING	B EA	1
8A	18	XBFZZ		11663053	19207	DAMPENER	B EA	1
8A	19	XBFZZ		11646967	19207	METER ASSY, TIME TOTAL	B EA	1
8A	20	XBFZZ		MS35333-37	96906	WASHER, LOCK	B EA	6
8A	21	XBFZZ		MS35206-23	96906	SCREW, MACHINE	B EA	6

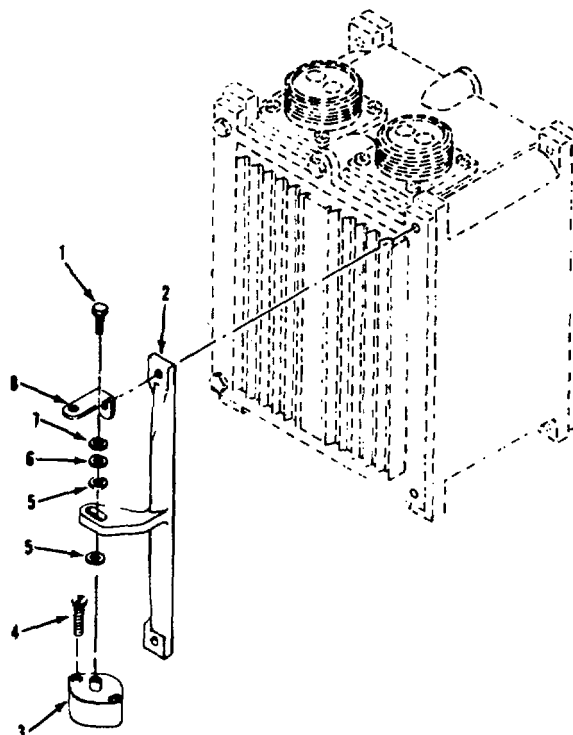


Figure 9. Voltage regulator generator.

(1) ILLUSTRATION		(2)	(3)	(4)	(5)	(6)	(7)	(8)	
(a) FIG NO.	(b) ITEM NO.	SMR CODE	NATIONAL STOCK NUMBER	PART NUMBER	FSCM	DESCRIPTION	USABLE ON CODE	U/M	QTY INC IN UNIT
						GROUP 09: VOLTAGE REGULATOR GENERATOR			
9	1	PAFZZ	5305-00-984-6195	MS35225-47	96906	SCREW, MACHINE	A	EA	4
9	2	XBFZZ		10919340	19207	BRACKET, REGULATOR	A	EA	4
9	3	PAFZZ	2520-00-981-8614	11659111	19207	MOUNT, SHOCK ABSORBER	A	EA	4
9	4	PAFZZ	5305-00-958-5481	8689200	19207	SCREW, MACHINE	A	EA	8
9	5	PAFZZ	5310-00-081-4219	MS27183-12	96906	WASHER, FLAT	A	EA	8
9	6	PAFZZ	5310-00-809-8544	MS27183-7	96906	WASHER, FLAT	A	EA	2
9	7	PAFZZ	5310-00-045-3299	MS35338-42	96906	WASHER, LOCK	A	EA	4
9	8	XBFZZ		10919484	19207	BRACKET, ANGLE	A	EA	1

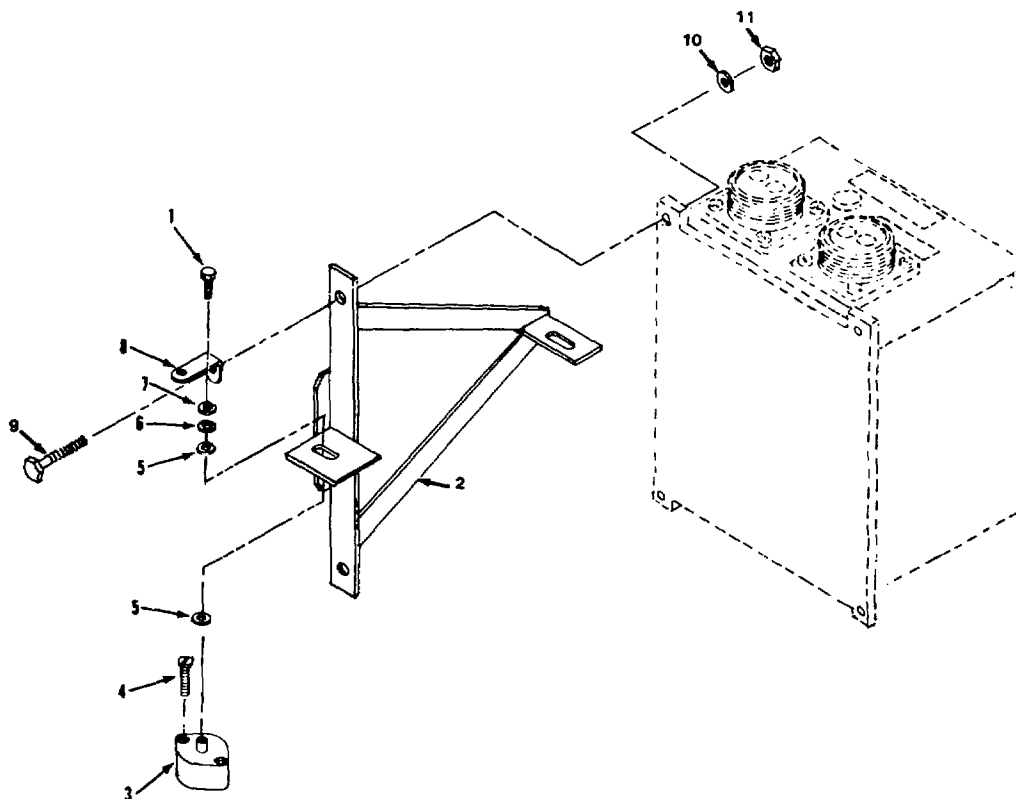


Figure 9A. Voltage regulator generator.

(1) ILLUSTRATION		(2)	(3)	(4)	(5)	(6)	(7)	(8)
(a) FIG NO.	(b) ITEM NO.	SMR CODE	NATIONAL STOCK NUMBER	PART NUMBER	FSCM	DESCRIPTION USABLE ON CODE	U/M	QTY INC IN UNIT
						GROUP 09: VOLTAGE REGULATOR GENERATOR		
9A	1	PAFZZ	5305-00-984-6195	MS35225-47	96906	SCREW, MACHINE B	EA	4
9A	2	XBFZZ		12253401	19207	BRACKET, REGULATOR B	EA	2
9A	3	PAFZZ		8712158	19207	MOUNT, SHOCK ABSORBER B	EA	4
9A	4	PAFZZ		MS35241-56	96906	SCREW, MACHINE B	EA	8
9A	5	PAFZZ		10919341	19207	WASHER, FLAT B	EA	8
9A	6	PAFZZ	5310-00-809-8544	MS27183-7	96906	WASHER, FLAT B	EA	2
9A	7	PAFZZ		MS35338-23	96906	WASHER, LOCK B	EA	4
9A	8	XBFZZ		10919484	19207	BRACKET, ANGLE B	EA	1
9A	9	PAFZZ	5305-01-075-0957	MS51849-100	96906	SCREW, MACHINE B	EA	4
9A	10	PAOZZ	5310-00-809-4058	MS27183-10	96906	WASHER, FLAT B	EA	4
9A	11	PAFZZ	5310-00-088-1251	MS51922- 1	96906	NUT PLAIN, HEXAGON B	EA	4

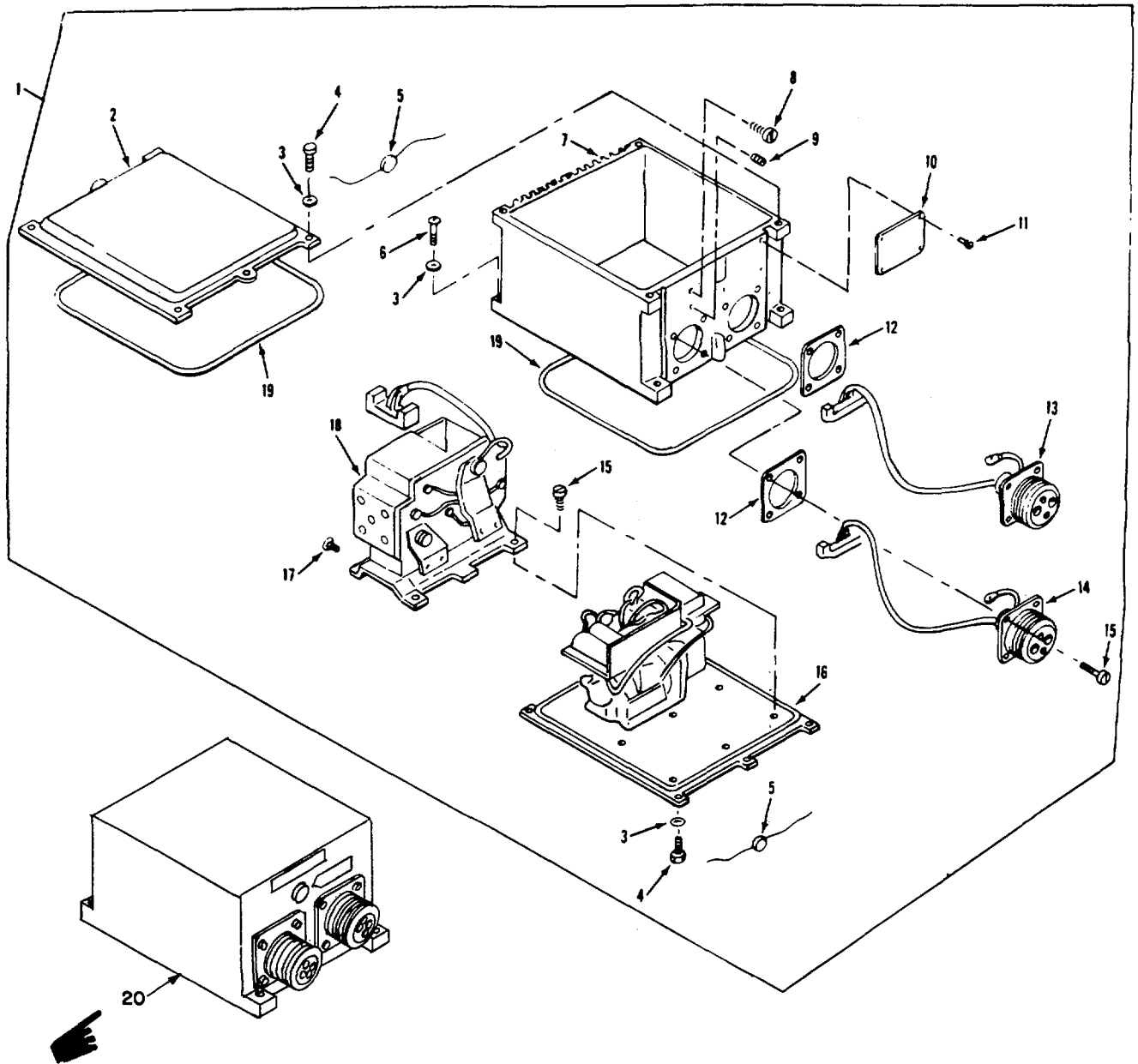


Figure 10. Generator regulator.

(1) ILLUSTRATION		(2)	(3)	(4)	(5)	(6)	(7)	(8)
(a) FIG NO.	(b) ITEM NO.	SMR CODE	NATIONAL STOCK NUMBER	PART NUMBER	FSCM	DESCRIPTION USABLE ON CODE	U/M	QTY INC IN UNITS
						GROUP 10: REGULATOR, ENGINE GENERATOR		
10	1	PAFZZ	2920-01-054-0479	12257823	19207	REGULATOR, ENGINE GENERATOR	A EA	1
10	2	XBHZZ		86899197	19207	COVER: GENERATOR REGULATOR	A EA	16
10	3	PAHZZ	5310-00-582-5965	MS35338-44	96906	WASHER, LOCK	A EA	16
10	4	PAHZZ	5305-00-916-6565	MS51095-307	96906	SCREW, EXTERNALLY RELIEVED	A EA	12
10	5	PAHZZ	5340-00-598-3442	MS51938-2	96906	SEAL, LEAD	A EA	2
10	6	PAHZZ	5305-00-206-5507	8383636	19207	SCREW, EXTERNALLY RELIEVED	A EA	4
10	7	XAHZZ		86899199	19207	CASE: GENERATOR REGULATOR	A EA	1
10	8	PAHZZ	5305-00-042-5567	425567	21450	SCREW ASSEMBLED WASHER	A EA	1
10	9	XBHZZ		MS490005-2	96906	PLUG, PIPE	A EA	1
10	10	XBFZZ		8724048	19207	PLATE, IDENTIFICATION: GENERATOR REGULATOR	A EA	1
10	11	PAFZZ	5305-00-253-5612	MS21318-15	96906	SCREW, DRIVE	A EA	4
10	12	PAFZZ	5330-00-641-4337	7358505	19207	GASKET	A EA	2
10	13	PAHZZ	2590-00-983-0256	8383624	19207	CONNECTOR, RECEPTACLE, ELECTRICAL	A EA	1
10	14	PAHZZ	2920-00-983-0247	8383625	19207	CONNECTOR, RECEPTACLE, ELECTRICAL	A EA	1
10	15	PAHZZ		451634	21450	SCREW, ASSEMBLED WASHER	A EA	14
10	16	PAHZZ	2920-00-335-4265	8723895	19207	REGULATOR, ENGINE GENERATOR	A EA	1
10	17	PAHZZ	5305-00-019-0575	190575	19207	SCREW, ASSEMBLED WASHER	A EA	4
10	18	PAHZZ	2920-00-308-3939	8689245	19207	RELAY ASSEMBLY: GENERATOR REGULATOR	A EA	1
10	19	PAHZZ	5330-00-187-3611	546905	21450	PACKING, PREFORMED	A EA	2
10	20		2920-01-054-0479	12257823	19207	REGULATOR, ENGINE GENERATOR	B EA	1

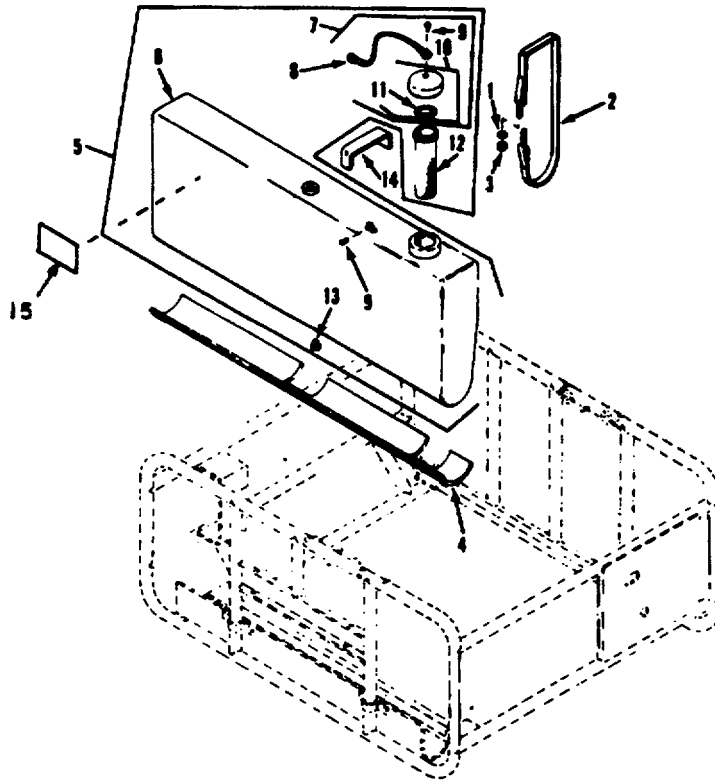


Figure 11. Fuel tank.

(1) ILLUSTRATION		(2)	(3)	(4)	(5)	(6)	(7)	(8)
(a) FIG NO.	(b) ITEM NO.	SMR CODE	NATIONAL STOCK NUMBER	PART NUMBER	FSCM	DESCRIPTION USABLE ON CODE	U/M	QTY INC IN UNIT
						GROUP 11: FUEL TANK		
11	1	PAOZZ	5310-00-081-4219	MS27183-12	96906	WASHER, FLAT	EA	4
11	2	XBOZZ		10919253	19207	BAND, RETAINING: ENGINE FUEL TANK	EA	2
11	3	PAOZZ	5310-00-088-0553	MS21044N5	96906	NUT, SELF-LOCKING, HEXAGON	EA	4
11	4	PAOZZ	5330-00-981-4927	10919329	19207	SEAL, RUBBER STRIP ENGINE FUEL TANK	EA	1
11	5	XBFFF		12253146	19207	TANK ASSEMBLY, FUEL: (PLASTIC)	EA	1
11	5	XBFFF		10941141	19207	TANK, FUEL, ENGINE: (ALUMINUM)	EA	1
11	6	XBFFF		11633285	19207	TANK, FUEL, ENGINE	EA	1
11	7	XBFFF	2910-00-605-1353	13200E8826	97403	CAP ASSEMBLY: FUEL TANK	EA	1
11	8	PAOZZ	44010-00-076-7079	10941130	19207	CABLE, FUEL CAP RETAINER	EA	1
11	9	PAOZZ	5320-00-584-1285	MS20600AD6 W2	96906	RIVET, BLIND	EA	2
11	10	PAOZZ	2910-00-605-1353	7737493	19207	CAP, FILLER OPENING	EA	1
11	11	PAOZZ	5330-00-182-3310	10941153	19207	GASKET: FUEL CAP	EA	1
11	12	PAOZZ	2910-00-981-4925	10919326	19207	STRAINER ELEMENT, SEDIMENT	BA	1
11	13	XBOZZ		AN932-3	88044	PLUG, PIPE: 1/4 NPT	EA	1
11	14	XBOZZ		10919274	19207	PAD, STRAP TO TANK: ENGINE FUEL TANK	EA	2
11	15			B-4929-14	02032	PLATE, INSTRUCTION	B EA	1

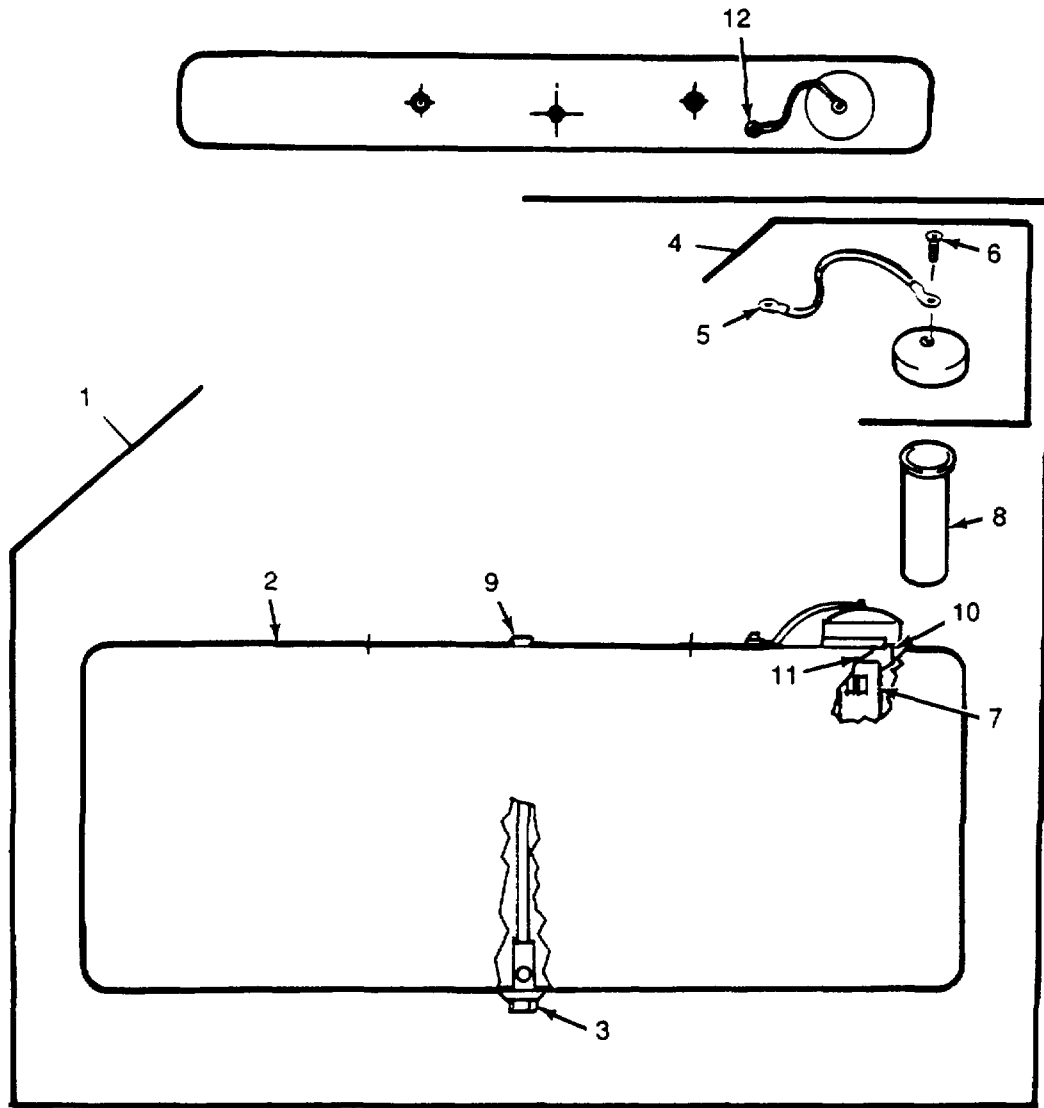


Figure 11A. Fuel Tank

(1) ILLUSTRATION		(2)	(3)	(4)	(5)	(6)	(7)	(8)
(a) FIG NO.	(b) ITEM NO.	SMR CODE	NATIONAL STOCK NUMBER	PART NUMBER	FSCM	DESCRIPTION USABLE ON CODE	U/M	QTY INC IN UNIT
11A	1	PAFFZ	2910-00-409-7962	11633307	19207	TANK ASSEMBLY	EA	1
11A	2	PAFFZ	2910-00-422-2036	11633285	19207	TANK, FUEL ENGINE	EA	1
11A	3	XBOZZ		11633255	19207	RETAINER	EA	1
11A	4	XBFFF		10919327	19207	CAP, ASSY	EA	1
11A	5	PAOZZ	4010-00-076-7079	10941130	19207	CABLE, FUEL CAP RET	EA	1
11A	6	PAOZZ	5320-00-584-1285	MS20600AD6002	96906	RIVET, BLIND	EA	2
11A	7	PAOZZ	2910-00-981-4925	10919326	19207	STRAINER	EA	1
11A	8	PAOZZ		10919336	19207	SCREEN	EA	1
11A	9	PAOZZ		11633254	19207	ADAPTER	EA	1
11A	10	PAOZZ		11633305	19207	ADAPTER	EA	1
11A	11	PAOZZ		11633439	19207	FILLER NECK, FUEL	EA	1
11A	12	PAOZZ	5310-00-088-0553	MS21044NE		NUT	EA	4

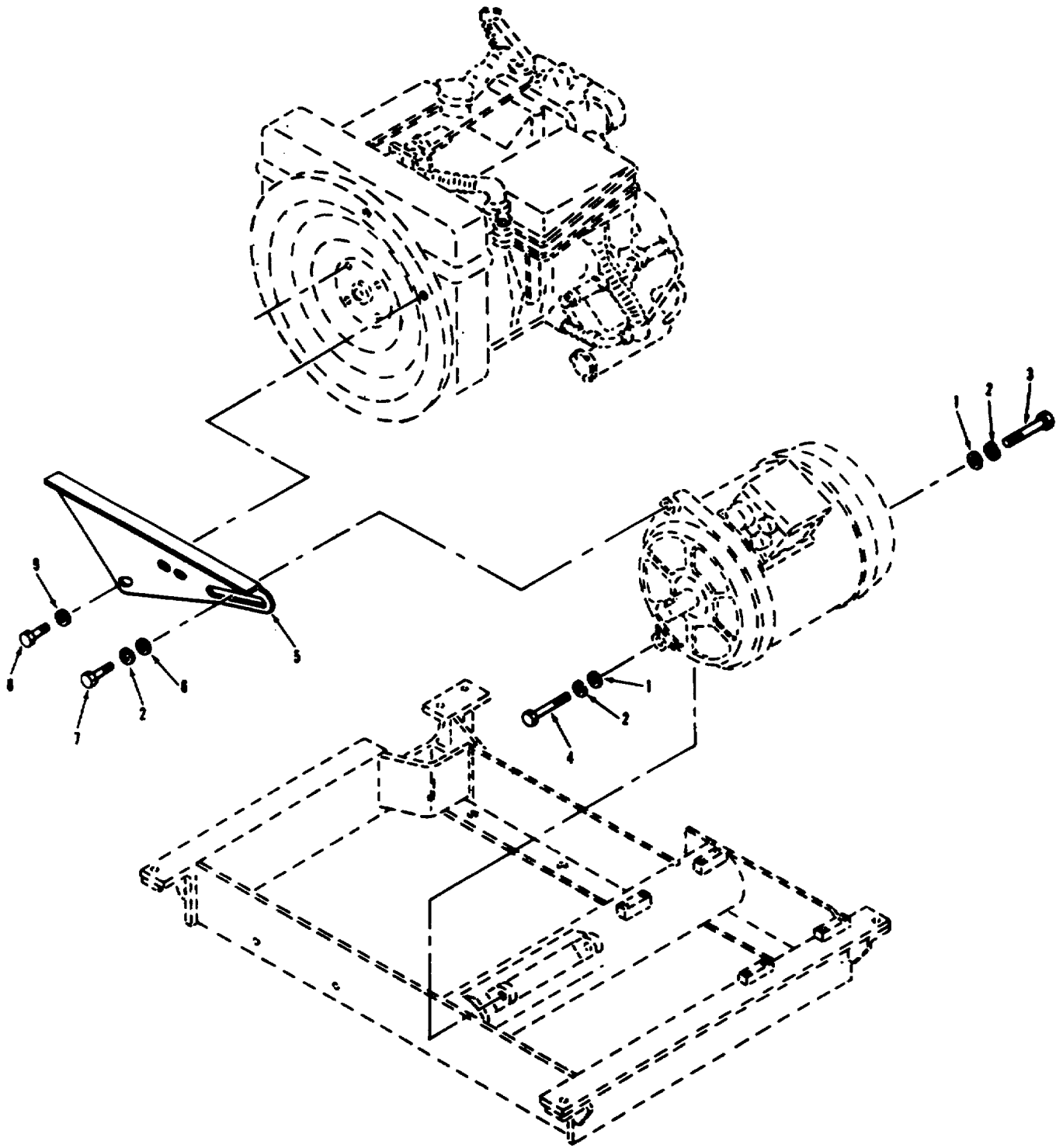


Figure 12. Generator mounting.

(1) ILLUSTRATION		(2)	(3)	(4)	(5)	(6)	(7)	(8)
(a) FIG NO.	(b) ITEM NO.	SMR CODE	NATIONAL STOCK NUMBER	PART NUMBER	FSCM	DESCRIPTION USABLE ON CODE	U/M	QTY INC IN UNIT
						GROUP 12: GENERATOR, STARTER		
12	1	PAOZZ	5310-00-809-4085	MS27183-16	96906	WASHER, FLAT	EA	2
12	2	PAOZZ	5310-00-209-0965	MS35338-47	96906	WASHER, LOCK	EA	3
12	3	PAOZZ	5305-00-710-4197	MS90726-92	96906	SCREW, CAP, HEXAGON HEAD	EA	1
12	4	PAOZZ	5305-00-710-4119	MS90726-93	96906	SCREW, CAP, HEXAGON HEAD	EA	1
12	5	XBOZZ		10919342	19207	BRACKET, ENGINE ACCESSORY: GENERATOR	EA	1
12	6	PAOZZ	5310-00-809-5997	MS27183-17	96906	WASHER, FLAT	EA	1
12	7	PAOZZ	5305-00-710-4192	MS35298-87	96906	SCREW, CAP, HEXAGON HEAD	EA	1
12	8	PAOZZ	5305-00-269-3209	MS35291-58	96906	SCREW, CAP, HEXAGON HEAD	EA	2
12	9	PAOZZ	5310-00-080-6004	MS27183-14	96906	WASHER, FLAT	EA	2

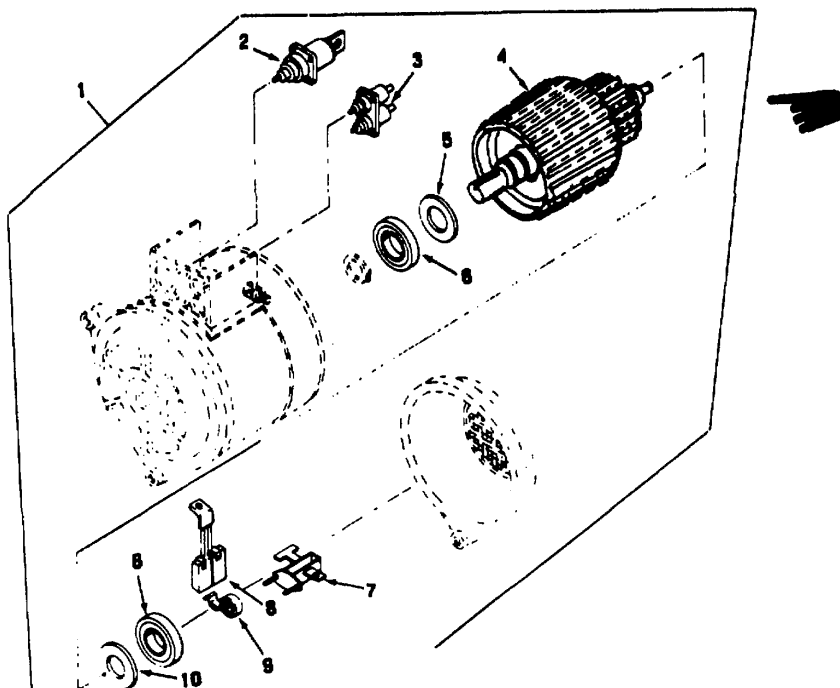


Figure 13. Starter-generator.

(1) ILLUSTRATION		(2)	(3)	(4)	(5)	(6)	(7)	(8)
(a) FIG NO.	(b) ITEM NO.	SMR CODE	NATIONAL STOCK NUMBER	PART NUMBER	FSCM	DESCRIPTION USABLE ON CODE	U/M	QTY INC IN UNIT
						GROUP 13: STARTER GENERATOR, ENGINE		
13	1	PAFFH	2920-00-981-4936	10919292	19207	STARTER-GENERATOR, ENGINE	EA	1
13	1	PAFFF		12345777	19207	STARTER-GENERATOR, ENGINE	EA	1
13	2		5910-00-567-3285	7974158	21450	CAPACITOR, FIXED	EA	1
13	3	PAFZZ	5910-00-649-3166	7974157	18876	CAPACITOR, FIXED	EA	1
13	4	PAFZZ		10919343	19207	ARMATURE GENERATOR	EA	1
13	5	PAFZZ	2920-00-953-9332	10919346	19207	DEFLECTOR, DIRT AND LIQUID	EA	1
13	6	PAFZZ	3110-00-141-9848	8344707	31435	BEARING, BALL, ANNULAR	EA	2
13	7	KFFZZ	5877-00-819-8775	30010-1025	19207	BRUSH HOLDER: GENERATOR BRUSH	EA	6
13	8	KFFZZ		10919345	19207	BRUSH: GENERATOR (PART OF KIT P/N 5702806).	EA	6
13	9	PAFZZ		10919344	19207	SPRING: BRUSH (PART OF KIT P/N 5702806)	EA	12
13	10	PAFZZ	5310-00-570-2757	8344708	19207	WASHER, SHOULDERED AND RECESSED:	EA	1
		PAFZZ	2910-00-981-4930	5702806	19207 19207	PARTS KIT, ENGINE GENERATOR BRUSH, GENERATOR SPRING, BRUSH	EA EA	1 6 12

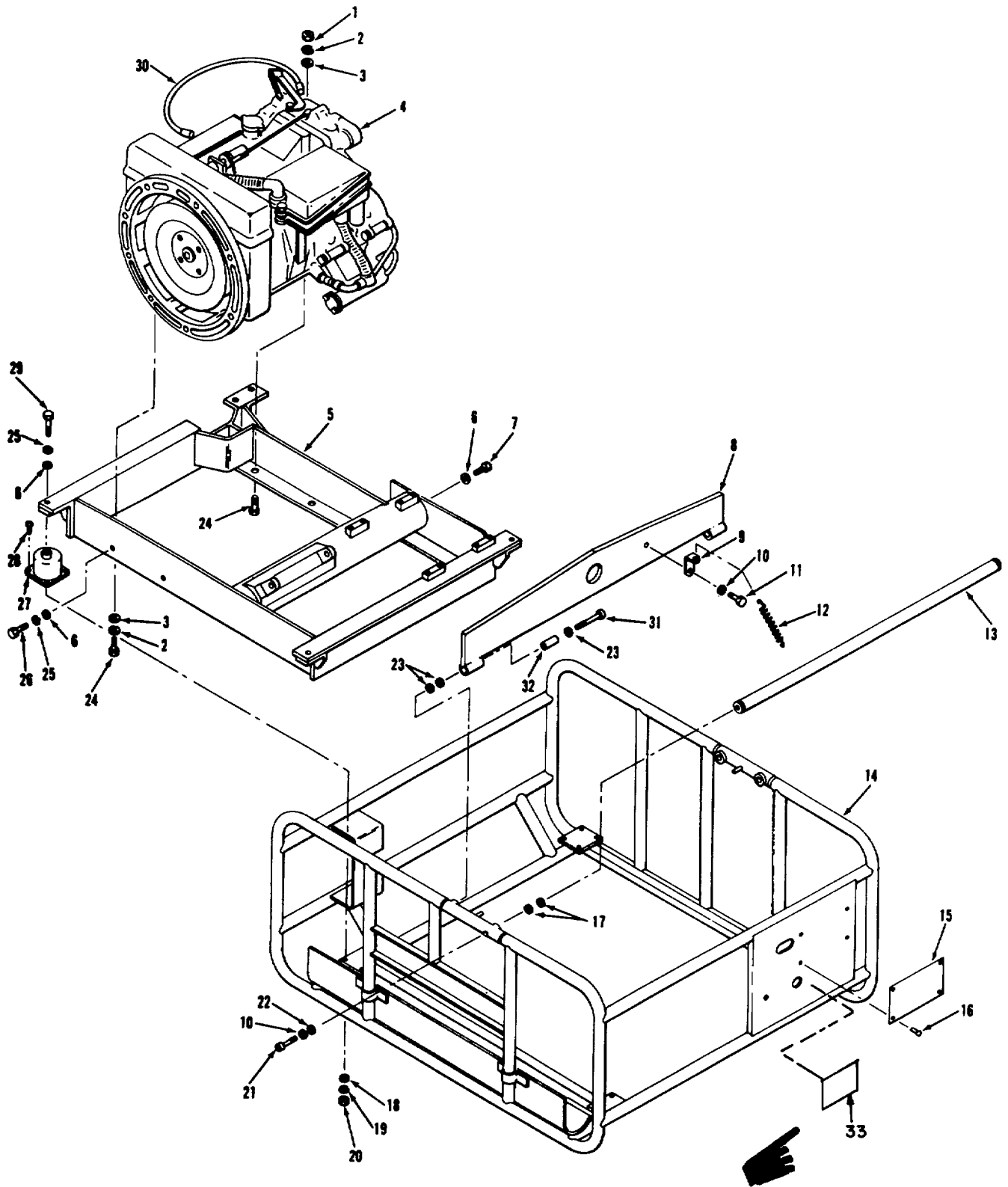


Figure 14. Engine, mounts and frames.

(1) ILLUSTRATION		(2)	(3)	(4)	(5)	(6)	(7)	(8)
(a) FIG NO.	(b) ITEM NO.	SMR CODE	NATIONAL STOCK NUMBER	PART NUMBER	FSCM	DESCRIPTION USABLE ON CODE	U/M	QTY INC IN UNIT
						GROUP 14: GENERATOR SET FRAME		
14	1	PAOZZ	5310-00-880-7744	MS51967-5	96906	NUT, PLAIN, HEXAGON	EA	2
14	2	PAOZZ	5310-00-407-9566	MS35338-45	96906	WASHER, LOCK	EA	4
14	3	PAOZZ	5310-00-081-4219	MS27183-12	96906	WASHER, FLAT	EA	4
14	4	PAFFF	2805-00-068-7512	13206E0000	97403	ENGINE, GASOLINE (REFER TO TM 5-2805-203-24P FOR COMPONENT PARTS).	EA	1
14	5	XBFZZ		10919283	19207	FRAME, GENERATOR SET	EA	1
14	6	PAFZZ	5310-00-080-6004	MS27183-14	96906	WASHER, FLAT	EA	8
14	7	PAFZZ	5305-00-269-3209	MS90725-58	96906	SCREW, CAP, HEXAGON HEAD	EA	1
14	8	XBOZZ		10919485	19207	BRACKET, POWER GENERATOR: LIFTING	EA	1
14	9	XBOZZ		10919484	19207	BRACKET, ANGLE: SPRING	EA	1
14	10	PAOZZ	5310-00-582-6965	MS35338-44	96906	WASHER, LOCK	EA	3
14	11	PAOZZ	5305-00-068-0500	MS35291-3	96906	SCREW, CAP, HEXAGON HEAD	EA	1
14	12	PAOZZ	5360-00-189-1508	MS24586C23	96906	SPRING, HELICAL, EXTENSION	EA	1
14	13	XBFZZ		10919488	19207	TUBE ASSEMBLY, ALUMINUM	EA	1
14	14	XBFZZ		11646991	19207	FRAME, GENERATOR SET	EA	1
14	15	PAOZZ	9905-00-988-2563	10919254	19207	PLATE, IDENTIFICATION: GENERATOR	EA	1
14	16	PAOZZ	5320-00-954-9568	MS20604AD4W3	96906	RIVET, BLIND:	EA	4
14	17	PAOZZ	5310-00-809-3078	MS27183-11	96906	WASHER, FLAT	EA	V
14	18	PAFZZ	5310-00-809-8546	MS27183-8	96906	WASHER, FLAT	EA	16
14	19	PAFZZ	5310-00-045-3296	MS35338-43	96906	WASHER, LOCK	EA	16
14	20	PAFZZ	5310-00-934-9758	MS35649-202	96906	NUT, PLAIN, HEXAGON	EA	16
14	21	PAOZZ	5305-00-978-9383	MS16997-65	96906	SCREW, CAP, SOCKET HEAD	EA	2
14	22	PAOZZ	5310-00-167-0835	AN960-416L	88044	WASHER, FLAT	EA	2
14	23	PAOZZ	5310-00-167-0821	AN960-616	88044	WASHER, FLAT	EA	V
14	24	PAOZZ	5306-00-225-8499	MS90725-34	96906	BOLT, MACHINE	EA	4
14	25	PAOZZ	5310-00-637-9541	MS35338-46	96906	WASHER, LOCK	EA	6
14	26	PAOZZ	5305-00-269-3213	MS35291-62	96906	SCREW, CAP, HEXAGON HEAD	EA	2
14	27	PAFZZ	2540-00-981-8615	8712159	19207	MOUNT, RESILIENT: STARTER- GENERATOR OUTER FRAME	EA	4
14	28	PAFZZ	5305-00-984-6211	MS35206-264	96906	SCREW, MACHINE	EA	16
14	29	PAFZZ	5305-00-269-2805	MS90726-62	96906	SCREW, CAP, HEXAGON HEAD	EA	4

(1) ILLUSTRATION		(2)	(3)	(4)	(5)	(6)	(7)	(8)
(a) FIG NO.	(b) ITEM NO.	SMR CODE	NATIONAL STOCK NUMBER	PART NUMBER	FSCM	DESCRIPTION USABLE ON CODE	U/M	QTY INC IN UNIT
14	30	PAOZZ	2920-00-052-8411	MS51011-7	96906	LEAD AND CONDUIT ASSEMBLY: (THIS LEAD REPLACES THE NUMBER 2 SPARK PLUG LEAD ON THE ENGINE)	EA	1
14	31	PAOZZ	5305-00-983-5337	MS35457-73	96906	SCREW, CAP, SOCKET HEAD	EA	2
14	32	PAOZZ	5365-00-414-6656	10919483	19207	SPACER, SLEEVE	EA	2
14	33			B-4929-14	02032	PLATE, INSTRUCTION B	EA	1

(1) ILLUSTRATION		(2)	(3)	(4)	(5)	(6)	(7)	(8)
(a) FIG NO.	(b) ITEM NO.	SMR CODE	NATIONAL STOCK NUMBER	PART NUMBER	FSCM	DESCRIPTION USABLE ON CODE	U/M	QTY INC IN UNITS
						GROUP 99: BULK MATERIALS		
BULK		PAFZZ	6145-00-706-6674	M13486-1-14	81349	WIRE, ELECTRICAL	FT	V
BULK		PAFZZ	6145-00-772-0853	M13486-1-5	81349	WIRE, ELECTRICAL	FT	V
BULK		PAFZZ	6145-00-805-3354	M13486-1-12	81349	WIRE, ELECTRICAL	FT	V
BULK		PAFZZ	6145-00-194-9832	QQB575-34	81349	BRAID, WIRE	FT	V

SECTION IV. NATIONAL STOCK NUMBER AND PART NUMBER INDEX

NATIONAL STOCK NUMBER	FIGURE NO.	ITEM NO.	NATIONAL STOCK NUMBER	FIGURE NO.	ITEM NO.
5305-00-019-0575	10	17	5306-00-225-8511	8	1
6110-00-040-0164	9	5	5306-00-225-9088	7	4
5305-00-042-5567	10	8	4730-00-231-3959	2	7
5310-00-045-3296	8	14	4730-00-231-4008	2	9
5310-00-045-3296	14	19	4730-00-231-4009	2	20
5310-00-045-3299	9	7	5305-00-253-5612	10	11
9905-00-051-8835	8	11	5305-00-253-5616	2	5
2920-00-052-8411	14	30	5305-00-269-2805	14	29
4730-00-053-0166	2	12	5305-00-269-3209	3	3
5999-00-057-2929	6	17	5305-00-269-3209	12	8
5310-00-059-9277	8	17	5305-00-269-3209	14	7
5340-00-060-9029	2	6	5305-00-269-3213	14	26
3020-00-068-0226	7	7	4720-00-289-9202	2	8A
3020-00-068-0227	7	3	2920-00-308-3939	10	18
5305-00-068-0500	14	11	5365-00-318-8184	4	4
5305-00-068-0501	2	13	5365-00-318-8184	6	9
5305-00-068-0506	4	8	5935-00-333-3088	5	18
2805-00-068-7512	14	4	5935-00-333-9414	4	3
5975-00-074-2072	6	26	5935-00-333-9414	6	8
4010-00-076-7079	6	4	2920-00-335-4265	10	16
4010-00-076-7079	11	8	5310-00-407-9566	7	5
5310-00-080-6004	3	5	5310-00-407-9566	8	5
5310-00-080-6004	12	9	5310-00-407-9566	14	2
5310-00-080-6004	14	6	5365-00-414-6656	14	32
5310-00-081-4219	8	4	5910-00-567-3285	13	2
5310-00-081-4219	9	5	5310-00-570-2757	13	10
5310-00-081-4219	11	1	5935-00-572-9180	6	15
5310-00-081-4219	14	3	5310-00-582-5965	2	18
2590-00-083-0266	8	8	5310-00-582-5965	6	29
5310-00-088-0553	11	3	5310-00-582-5965	10	3
2920-00-088-3989	9	3	5310-00-582-5965	14	10
2920-00-109-4181	3	14	5320-00-584-1285	11	9
5940-00-114-1300	5	6	5340-00-598-3442	10	5
3110-00-141-9848	13	6	2910-00-605-1353	11	7
4730-00-142-1831	2	4	2910-00-605-1353	11	10
5365-00-142-7013	8	16	5935-00-615-9984	5	12
5310-00-167-0821	14	23	5310-00-637-9541	3	4
5310-00-167-0835	14	22	5310-00-637-9541	14	25
5935-00-179-3441	6	5	4720-00-639-9907	2	10A
5330-00-182-3310	11	11	5310-00-640-9613	8	18
5330-00-187-3611	10	19	5330-00-641-4337	10	12
5360-00-189-1508	14	12	5910-00-649-3166	13	3
6145-00-194-9832	BULK		5310-00-655-9860	4	5
4730-00-203-3167	2	15	5310-00-655-9860	6	10
5305-00-206-5507	10	6	5935-00-677-4444	6	12
5310-00-209-0965	12	2	4310-00-678-6755	8	24
5305-00-225-3840	6	27	5310-00-678-4228	4	9
5306-00-225-8499	14	24	5310-00-678-4228	6	22

SECTION IV. NATIONAL STOCK NUMBER AND PART NUMBER INDEX - CONT.

NATIONAL STOCK NUMBER	FIGURE NO.	ITEM NO.	NATIONAL STOCK NUMBER	FIGURE NO.	ITEM NO.
2920-00-679-4721	8	19	4730-00-842-2200	2	10B
5935-00-686-2604	4	10	5310-00-880-7744	8	6
5935-00-686-2610	5	21	5310-00-880-7744	14	1
5935-00-686-4007	6	23	2990-00-881-1037	3	11
5935-00-686-9374	4	6	5935-00-901-8128	6	2
5935-00-686-9374	6	11	4730-00-908-3194	3	7
5975-00-697-6991	5	19	5999-00-909-3751	6	31
6145-00-705-6674	BULK		5305-00-916-6465	10	4
5940-00-705-6708	4	11	5325-00-930-5972	4	8
5940-00-705-6708	5	2	5325-00-930-5972	6	21
5940-00-705-6708	5	9	5310-00-934-9758	14	20
5940-00-705-6710	5	10	2920-00-953-9332	13	5
5940-00-705-6711	5	4	5320-00-954-9568	8	12
5940-00-705-6730	6	24	5320-00-954-9568	14	16
5940-00-705-6732	4	12	5305-00-958-5252	3	2
5940-00-710-4192	12	7	5305-00-958-5481	9	4
5940-00-710-4197	12	3	4820-00-966-3810	2	14
5940-00-710-4199	12	4	5305-00-978-9383	14	21
5935-00-729-8217	4	7	2990-00-981-4925	11	12
5985-00-729-8217	6	20	2910-00-981-4927	11	4
5310-00-761-6882	2	19	5330-00-981-4929	3	6
5310-00-761-6882	6	30	2910-00-981-4930	13	
5315-00-771-5376	6	3	2920-00-981-4936	13	1
6145-00-772-0853	BULK		2990-00-981-4937	3	15
5935-00-772-0874	6	6	2990-00-981-4938	3	10
5365-00-772-2343	5	20	2920-00-981-4939	7	6
5365-00-775-5698	7	2	2920-00-981-4940	5	1
2920-00-781-1953	8	9	2805-00-981-4983	3	9
5330-00-797-3506	3	13	2590-00-981-4944	5	8
1015-00-798-2997	5	14	2590-00-981-4945	4	1
1015-00-798-2997	6	14	2590-00-981-4946	6	1
4730-00-800-7570	2	11	2590-00-981-6868	5	13
4730-00-800-9869	2	2	2590-00-981-8613	5	5
6145-00-805-3354	BULK		2540-00-981-8615	14	27
5310-00-809-3078	14	17	2590-00-983-0256	10	13
5310-00-809-4058	2	17	2590-00-983-0257	10	14
5310-00-809-4058	3	12	3030-00-983-2873	7	8
5310-00-809-4058	6	28	5305-00-983-5337	14	31
5310-00-809-4085	12	1	5305-00-984-6191	5	23
5310-00-809-8544	5	22	5305-00-984-6195	9	1
5310-00-809-8544	9	6	5305-00-984-6211	14	28
5310-00-809-8546	8	3	5305-00-984-6212	8	2
5310-00-809-8546	8	15	5330-00-988-0569	2	1
5310-00-809-8546	14	18	4720-00-988-1166	2	3
5310-00-809-5997	12	6	9905-00-988-2563	14	15
5977-00-819-8775	13	7	5315-00-990-2630	7	1
5935-00-833-8561	5	16	5305-00-993-1851	8	13
5935-00-833-8561	6	18	6645-01-035-7289	8	25
5970-00-833-8562	5	15	6115-01-038-9075	8	23
5970-00-833-8562	6	13	2920-01-054-0479	10	1
5310-00-833-8567	6	16	2920-01-054-0479	10	20
4730-00-842-2198	2	8B			

NATIONAL STOCK NUMBER AND PART NUMBER INDEX

PART NUMBER	FSCM	FIGURE NO.	ITEM NO.	PART NUMBER	FSCM	FIGURE NO.	ITEM NO.
AN932-3	88044	11	13	MS35338-44	96906	10	3
AN960-416L	88044	14	22	MS35338-44	96906	14	10
AN960-616	88044	14	23	MS35338-45	96906	7	5
J-4487-1	76005	8	24	MS35338-45	96906	8	5
MILH8794-3	81349	2	8A	MS35338-45	96906	14	2
MILH8794-4	81349	2	10A	MS35338-46	96906	14	25
MS17821-1-9	96906	6	26	MS35338-47	96906	12	2
MS20066-252	96906	7	1	MS35457-73	96906	14	31
MS20600AD6W2	96906	11	9	MS35649-202	96906	14	20
MS20604AD4W3	96906	8	12	MS35842-11	96906	3	7
MS20604AS4W3	96906	14	16	MS49005-2	96906	10	9
MS20659	96906	5	6	MS51011-7	96906	14	30
MS20822-4	96906	2	20	MS51065-48-2	96906	7	8
MS20822-3	96906	2	9	MS51095-307	96906	10	4
MS20823-3	96906	2	7	MS51922-17	96906	8	21
MS21044N5	96906	11	3	MS51938-2	96906	10	5
MS21318-15	96906	10	11	MS51967-2	96906	2	19
MS21318-22	96906	2	6	MS51967-2	96906	6	30
MS24392-5	96906	2	2	MS51967-5	96906	8	6
MS24680-67	96906	8	17	MS51967-5	96906	14	1
MS25206-243	96906	5	22	MS90725-00	96906	8	20
MS25338-46	96906	3	4	M13486-1-12	81349	6	7
MS27148-2	96906	6	17				Bulk
MS27183-10	96906	2	17	M13486-1-14	96906	4	2
MS27183-10	96906	3	12			6	25
MS27183-10	96906	6	28	M13486-1-5	81349	4	13
MS27183-11	96906	14	17	M13486-1-5	81349	5	3
MS27183-12	96906	8	14	M13486-1-5	81349	5	11
MS27183-12	96906	9	5	M13486-1-5	81349	5	17
MS27183-12	96906	11	1	M13486-1-5	81349	6	19
MS27183-12	96906	14	3	M13486-1-5	81349		Bulk
MS27183-14	96906	3	5	10894808	19207	8	8
MS27183-14	96906	12	9	10919253	19207	11	2
MS27183-14	96906	14	6	10919254	19207	14	15
MS27183-16	96906	12	1	10919274	19207	11	14
MS27183-17	96906	12	6	10919283	19207	14	5
MS27183-7	96906	5	22	10919292	19207	13	1
MS27183-7	96906	9	6	10919299	19207	6	2
MS27183-8	96906	8	3	10919303	19207	8	7
MS27183-8	96906	8	15	10919304	19207	8	10
MS27183-8	96906	14	18	10919309	19207	3	14
MS28740-4	96906	2	10B	10919311	19207	7	6
MS28741-3-0700	96906	2	8	10919312	19207	3	15
MS28741-4-0110	96906	2	10	10919313	19207	3	10
MS28741-5-0100	96906	2	3	10919315	19207	6	1
MS35206-23	96906	8	27	10919316	19207	4	1
MS35225-34	96906	2	22	10919317	19207	5	13
MS35225-43	96906	5	23	10919318	19207	5	8
MS35225-47	96906	9	1	10919319	19207	5	1
MS35255-65	96906	8	2	10919322	19207	5	5
MS35291-3	96906	14	11	10919323	19207	3	9
MS35291-5	96906	2	13	10919324	19207	3	6
MS35291-58	96906	12	8	10919326	19207	11	12
MS35291-58	96906	14	7	10919329	19207	11	4
MS35291-62	96906	14	26	10919333	19207	8	16
MS35291-62	96906	14	26	10919334	19207	1	1
MS35291-87	96906	12	7	10919335	19207	2	1
MS35298-33	96906	7	4	10919340	19207	9	2
MS35333-37	96906	8	26	10919342	19207	12	5
MS35338-41	96906	2	23	10910343	19207	13	4
MS35338-42	96906	9	7	10919344	19207	13	9
MS35338-43	96906	8	14	10919345	19207	13	8
MS35338-43	96906	14	19	10919346	19207	13	5
MS35338-44	96906	2	18				
MS35338-44	96906	6	29				

NATIONAL STOCK NUMBER AND PART NUMBER INDEX

PART NUMBER	FSCM	FIGURE NO.	ITEM NO.	PART NUMBER	FSCM	FIGURE NO.	ITEM NO.
10919350	19207	8	11	7720874	19207	6	6
10919483	19207	14	32	7722343	19207	5	20
10919484	19207	9	8	7723306	19207	5	18
10919484	19207	14	9	7723308	19207	4	3
10319485	19207	14	8	7723308		6	8
10919488	19207	14	13	7737493	19207	11	10
10919489	19207	3	1	7974157	18876	13	3
10932720	19207	1	1	7974158	21450	13	2
10941126	19207	3	11	7982404	19207	5	12
10941130	19207	6	4	7982997	19207	5	14
10941130	19207	11	8	7982997	19207	6	14
10941131	19207	7	7	8338561	19207	5	16
10941132	19207	7	3	8338561	19207	6	18
10941141	19207	11	5	8338562	19207	5	15
10941153	19207	11	11	8338562	19207	6	13
11633285	19207	11	6	8338566	19207	6	15
11640178	19207	8	9	8338567	19207	6	16
11646967	19207	8	25	8344707	19207	13	6
11646991	19207	14	14	8344708	19207	13	10
11659111	19207	9	3	8365580	19207	9	5
11661294	19207	8	22	8376776	19207	4	4
11661295	19207	8	23	9376776	19207	6	9
12253146	19207	11	5	8383624	19207	10	13
12345777	19207	13	1	8383625	19207	10	15
13206E0000	97403	14	4	8383636	19207	10	6
13206E8471	97403	2	14	8389470	19207	8	9
13216E5868	19207	2	16	8689197	19207	10	2
13214E5869	19207	2	21	8689199	19207	10	7
30010-1025	31435	13	7	8689200	19207	9	4
425567	21450	10	8	8689245	19207	10	18
451634	21450	10	15	8701249	19207	4	9
546905	21450	10	19	8701249	19207	6	22
5702806	19207	13		8701325	19207	4	5
7056708	19207	4	11	8701325	19207	6	10
7056708	19207	5	9	8712159	19207	14	27
7056708	19207	5	9	8712164	19207	7	2
7056710	19207	5	10	8723895	19207	10	16
7056711	19207	5	4	8724048	19207	10	10
7056730	19207	6	24	8724199	19207	5	21
7056732	19207	4	12	8724242	19207	4	6
7064586	19207	6	12	8724242	19207	6	11
7358505	19207	10	12	8724324	19207	8	19
7388355	19207	4	7	8724405	19207	4	10
7388355	19207	6	20	8724406	19207	6	23
75276-43	21450	5	19	8764828	19207	4	8
7715376	19207	6	3			6	21
7720869	19207	6	5	9786E50-2	97403	3	13

SUPPLEMENTAL INDICES
SECTION IV REFERENCE NUMBER SUPPLEMENT INDEX LIST

REFERENCE NUMBER	FSCM	FIG. NO.	ITEM NO.	REFERENCE NUMBER	FSCM	FIG. NO.	ITEM NO.
AN6227-7	88044	8	18	M13486-1-14	81349	6A	25
AN806-5	88044	2	4	M13486-1-5	81349	6A	19
B-4929-14	02032	11	15	QQB575R34T375	81349	5	19
B-4929-14	02032	14	32	QQB575R34T375	81349	BULK	
HGBTXS	30780	2	11	WW-P-521	81348	2	15
MS16697-65	96906	14	21	10894808	19207	8A	8
MS17821-1-9	96906	6A	26	10919299	19207	6A	2
MS20604AD4W3	96906	8A	12	10919303	19207	8A	7
MS24586C23	96906	14	12	10919304	19207	8A	10
MS24587-3	96906	2	8B	10919341	19207	9A	5
MS27183-10	96906	6A	28	10919350	19207	8A	11
MS27183-10	96906	9A	10	10919484	19207	9A	8
MS27183-12	96906	8A	4	10941130	19207	6A	4
MS27183-7	96906	9A	6	11646967	19207	8A	19
MS27183-8	96906	8A	3	11661294	19207	8A	16
MS35190-304	96906	3	2	11661295	19207	8A	17
MS35206-23	96906	8A	21	11663053	19207	8A	18
MS35206-264	96906	14	28	12253401	19207	9A	2
MS35207-267	96906	8	13	12253407	19207	6A	1
MS35225-47	96906	9A	1	122578823	19207	10	20
MS35225-65	96906	8A	2	122578823	19207	10	1
MS35241-56	96906	9A	4	12268611	19207	8A	13
MS35291-47	96906	8A	1	13200E8826	97403	11	7
MS35333-37	96906	8A	20	190575	19207	10	17
MS35338-23	96906	9A	7	7056730	19207	6A	24
MS35338-26	96906	8A	5	7064586	19207	6A	16
MS35338-44	96906	6A	29	7388355	19207	6A	20
MS35690-502	96906	8A	6	7527643	19207	6A	10
MS51849-100	96906	9A	9	7715376	19207	6A	3
MS51922-1	96906	9A	11	7720869	19207	6A	5
MS51922-17	96906	8A	15	7720874	19207	6A	6
MS51952-1	96906	2	12	7722343	19207	6A	9
MS51967-2	96906	6A	30	7723306	19207	6A	8
MS90725-34	96906	14	24	7723308	19207	6A	12
MS90725-47	96906	8	1	7982997	19207	6A	18
MS90725-58	96906	3	3	8338562	19207	6A	17
MS90725-58	96906	14	7	8376776	19207	6A	13
MS90725-60	96906	8A	14	8389470	19207	8A	9
MS90725-7	96906	6A	27	8701249	19207	6A	22
MS90726-6	96906	3	8	8701325	19207	6A	14
MS90726-62	96906	14	29	8712158	19207	9A	3
MS90726-92	96906	12	3	8724199	19207	6A	11
MS90726-93	96906	12	4	8724242	19207	6A	15
M13486-1-12	81349	6A	7	8724406	19207	6A	23
M13486-1-14	81349	BULK		8764828	19207	6A	21

Page 41/(42 blank) has been deleted.

By Order of the Secretary of the Army:

Official:

E. C. MEYER
General, United States Army
Chief of Staff

J. C. PENNINGTON
Major General, United States Army
The Adjutant General

DISTRIBUTION:

To be distributed in accordance with DA Form 12-25D Organizational Maintenance Requirements for Generator Sets, Engine Driven, 5 KW, D.C.

☆ U. S. GOVERNMENT PRINTING OFFICE: 2000-461-764/33836

These are the instructions for sending an electronic 2028

The following format must be used if submitting an electronic 2028. The subject line must be exactly the same and all fields must be included; however only the following fields are mandatory: 1, 3, 4, 5, 6, 7, 8, 9, 10, 13, 15, 16, 17, and 27.

From: "Whoever <whoever@avma27.army.mil>
To: mpmt%avma28@st-louis-emh7.army.mil

Subject: DA Form 2028

1. **From:** Joe Smith
2. **Unit:** home
3. **Address:** 4300 Park
4. **City:** Hometown
5. **St:** MO
6. **Zip:** 77777
7. **Date Sent:** 19-OCT-93
8. **Pub no:** 55-2840-229-23
9. **Pub Title:** TM
10. **Publication Date:** 04-JUL-85
11. **Change Number:** 7
12. **Submitter Rank:** MSG
13. **Submitter FName:** Joe
14. **Submitter MName:** T
15. **Submitter LName:** Smith
16. **Submitter Phone:** 123-123-1234
17. **Problem:** 1
18. **Page:** 2
19. **Paragraph:** 3
20. **Line:** 4
21. **NSN:** 5
22. **Reference:** 6
23. **Figure:** 7
24. **Table:** 8
25. **Item:** 9
26. **Total:** 123
27. **Text:**

This is the text for the problem below line 27.

RECOMMENDED CHANGES TO EQUIPMENT TECHNICAL PUBLICATIONS



THEN . . . JOT DOWN THE DOPE ABOUT IT ON THIS FORM, CAREFULLY TEAR IT OUT, FOLD IT AND DROP IT IN THE MAIL!

SOMETHING WRONG WITH THIS PUBLICATION?

FROM: (PRINT YOUR UNIT'S COMPLETE ADDRESS)

PFC John DOE
CO A 3rd Engineer Bn
 Ft. Leonardwood, MO 63108

DATE SENT
22 August 1992

PUBLICATION NUMBER TM 1-1520-250-10	PUBLICATION DATE 15 June 1992	PUBLICATION TITLE Operator's manual MH60K Helicopter
--	----------------------------------	---

BE EXACT PIN-POINT WHERE IT IS

IN THIS SPACE, TELL WHAT IS WRONG AND WHAT SHOULD BE DONE ABOUT IT:

PAGE NO	PARA-GRAPH	FIGURE NO	TABLE NO
6	2-1 a		
31		4-3	

In line 6 of paragraph 2-1a the manual states the engine has 6 cylinders. The engine on my set only has 4 cylinders. Change the manual to show 4 cylinders.

Callout 16 in figure 4-3 is pointed ~~at~~ a bolt. In key to figure 4-3, item 16 is called a shim. Please correct one or the other

PRINTED NAME, GRADE OR TITLE, AND TELEPHONE NUMBER

JOHN DOE, PFC (268) 317-7111

SIGN HERE

JOHN DOE *John Doe*

DA FORM 2028-2
1 JUL 79

PREVIOUS EDITIONS ARE OBSOLETE.
DRSTS-M verprint2, 1 Nov 80

P.S. - IF YOUR OUTFIT WANTS TO KNOW ABOUT YOUR RECOMMENDATION, MAKE A CARBON COPY OF THIS AND GIVE TO YOUR HEADQUARTERS.

REVERSE OF DA FORM 2028-2 Reverse of DRSTS-M Overprint 2,
1 Nov 80

FILL IN YOUR
UNITS ADDRESS



FOLD BACK

DEPARTMENT OF THE ARMY

OFFICIAL BUSINESS

COMMANDER
U.S. ARMY AVIATION AND TROOP COMMAND
ATTN: AMSAT-I-MP
4300 GOODFELLOW BOULEVARD
ST. LOUIS, MO 63120-1798

TEAR ALONG PERFORATED LINE

RECOMMENDED CHANGES TO EQUIPMENT TECHNICAL PUBLICATIONS



SOMETHING WRONG WITH THIS PUBLICATION?

THEN . . . JOT DOWN THE DOPE ABOUT IT ON THIS FORM, CAREFULLY TEAR IT OUT, FOLD IT AND DROP IT IN THE MAIL!

FROM: (PRINT YOUR UNIT'S COMPLETE ADDRESS)

DATE SENT

PUBLICATION NUMBER
TM 5-6115-596-24P

PUBLICATION DATE
19 September 1980

PUBLICATION TITLE
Generator Set, Gasoline Driven, 4.2 KW, 150 AMP, 28V, DC: Model DC

BE EXACT PIN-POINT WHERE IT IS

IN THIS SPACE, TELL WHAT IS WRONG AND WHAT SHOULD BE DONE ABOUT IT:

PAGE NO	PARA-GRAPH	FIGURE NO	TABLE NO

PRINTED NAME, GRADE OR TITLE, AND TELEPHONE NUMBER

SIGN HERE

DA FORM 2028-2
1 JUL 79

PREVIOUS EDITIONS ARE OBSOLETE.
DRSTS-M verprint2, 1 Nov 80

P.S. - IF YOUR OUTFIT WANTS TO KNOW ABOUT YOUR RECOMMENDATION, MAKE A CARBON COPY OF THIS AND GIVE TO YOUR HEADQUARTERS.

REVERSE OF DA FORM 2028-2 Reverse of DRSTS-M Overprint 2,
1 Nov 80

FILL IN YOUR
UNITS ADDRESS



FOLD BACK

DEPARTMENT OF THE ARMY

OFFICIAL BUSINESS

COMMANDER
U.S. ARMY AVIATION AND TROOP COMMAND
ATTN: AMSAT-I-MP
4300 GOODFELLOW BOULEVARD
ST. LOUIS, MO 63120-1798

TEAR ALONG PERFORATED LINE

The Metric System and Equivalents

Linear Measure

1 centimeter = 10 millimeters = .39 inch
 1 decimeter = 10 centimeters = 3.94 inches
 1 meter = 10 decimeters = 39.37 inches
 1 dekameter = 10 meters = 32.8 feet
 1 hectometer = 10 dekameters = 328.08 feet
 1 kilometer = 10 hectometers = 3,280.8 feet

Weights

1 centigram = 10 milligrams = .15 grain
 1 decigram = 10 centigrams = 1.54 grains
 1 gram = 10 decigram = 0.35 ounce
 1 dekagram = 10 Grams = .35 ounce
 1 hectogram = 10 dekagrams = 3.52 ounces
 1 kilogram = 10 hectograms = 2.2 pounds
 1 quintal = 100 kilograms = 220.46 pounds
 1 metric ton = 10 quintals = 1.1 short tons

Liquid Measure

1 centiliter = 10 milliliters = .34 fl. ounce
 1 deciliter = 10 centiliters = 3.38 fl. ounces
 1 liter = 10 deciliters = 33.81 fluid ounces
 1 dekaliter = 10 liters = 2.64 gallons
 1 hectoliter = 10 dekaliters = 27.42 gallons
 1 kiloliter = 10 hectoliters = 264.18 gallons

Square Measure

1 sq. centimeter = 100 sq. millimeters = .155 sq. inch
 1 sq. decimeter = 100 sq. centimeters = 15.5 sq. inches
 1 sq. meter (centare) = 100 sq decimeters = 10.76 sq. feet
 1 sq. dekameter (are) = 1,076.4 sq. feet
 1 sq. hectometer (hectare) = 100 sq. dekameters = 2.47 acres
 1 sq. kilometer = 100 sq. hectometers = .386 sq. mile

Cubic Measure

1 cu. centimeter = 1000 cu. millimeters = .06 cu. inch
 1 cu. decimeter = 1000 cu. decimeters = 61.02 cu. inches
 1 cu. meter = 1000 cu. decimeters = 35.31 cu. feet

Approximate Conversion Factors

<i>To change</i>	<i>To</i>	<i>Multiply by</i>	<i>To change</i>	<i>To</i>	<i>Multiply by</i>
inches	centimeters	2.540	ounce-inches	newton-meters	.007062
feet	meters	.305	centimeters	inches	.394
yards	meters	.914	meters	feet	3.280
miles	kilometers	1.609	meters	yards	1.094
square inches	square centimeters	6.451	kilometers	miles	.621
square feet	square meters	.093	square centimeters	square inches	.155
square yards	square meters	.836	square meters	square feet	10.764
square miles	square kilometers	2.590	square meters	square yards	1.196
acres	square hectometers	.405	square kilometers	square miles	.386
cubic feet	cubic meters	.028	square hectometers	acres	2.471
cubic yards	cubic meters	.765	cubic meters	cubic feet	35.315
fluid ounces	milliliters	29.573	cubic meters	cubic yards	1.308
pints	liters	.473	milliliters	fluid ounces	.034
quarts	liters	.946	liters	pints	2.113
gallons	liters	3.785	liters	quarts	1.057
ounces	grams	28.349	liters	gallons	.264
pounds	kilograms	.454	grams	ounces	.035
short tons	metric tons	.907	kilograms	pounds	2.205
pound-feet	newton-meters	1.365	metric tons	short tons	1.102
pounds-inches	newton-meters	.11375			

Temperature (Exact)

°F Fahrenheit temperature $\frac{5}{9}$ (after subtracting 32) Celsius Temperature °C

