

G. V.A.J. D. GM 1-0/433

DEPARTMENT OF THE ARMY
SUPPLY CATALOG

ORD 7-8 SNL G-227

GROUP G

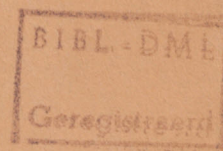
ORGANIZATIONAL, FIELD, AND DEPOT MAINTENANCE AL
FOR

L5-19

BODY, SHOP TRUCK, ST5 AND ST6
(FOR ORDNANCE MAINTENANCE TRUCKS)

Supersedes ORD 8 SNL G-227, 5 December 1944

THIS CATALOG IS CORRECT TO 8 DECEMBER 1949



GEREGISTREERD
- 5 JUN 1952
IGKL BBV

DEPARTMENT OF THE ARMY

JANUARY 1950

DEPARTMENT OF THE ARMY
SUPPLY CATALOG

ORD 7-8 SNL G-227

GROUP G

ORGANIZATIONAL, FIELD, AND DEPOT MAINTENANCE ALLOWANCES

FOR

SGV TD

BODY, SHOP TRUCK, ST5 AND ST6
(FOR ORDNANCE MAINTENANCE TRUCKS)

Supersedes ORD 8 SNL G-227, 5 December 1944

THIS CATALOG IS CORRECT TO 6 DECEMBER 1949

DEPARTMENT OF THE ARMY

JANUARY 1950

DEPARTMENT OF THE ARMY
WASHINGTON 25, D. C., 19 January 1950

Department of the Army Supply Catalog ORD 7-8 SNL G-227 is published for the information and guidance of all concerned.

[AG 461 (15 Dec 49)]

BY ORDER OF THE SECRETARY OF THE ARMY:

OFFICIAL:

EDWARD F. WITSELL
Major General, USA
The Adjutant General

J. LAWTON COLLINS
Chief of Staff, United States Army

DISTRIBUTION:

Tech Sv (2) except 9 (50); Arm & Sv Bd (2); AFF (2); OS Maj Comd (10); Base Comd (2); MDW (3); A (ZI) (18), Overseas (3); CHQ (2); D (2); R 9 (2); Bn 9 (2); C 9 (2); FC (1); Sch (5) except 9 (50); Gen Dep (1); Dep 9 (3); PE (Ord O) (5), OSD (1); PG 9 (3); Ars 9 (3); Dist 9 (3);
SPECIAL DISTRIBUTION.

For explanation of distribution formula, see SR 310-90-1.

CONTENTS

	<i>Page</i>
MAJOR ITEM.....	3
INTRODUCTION.....	4
ORGANIZATIONAL MAINTENANCE ALLOWANCES.....	8
VEHICULAR SPARE PARTS.....	8
ORGANIZATIONAL SPARE PARTS.....	8
TOOLS AND EQUIPMENT.....	8
APPLICABLE CLEANING AND PRESERVING MATERIALS.....	9
FIELD AND DEPOT MAINTENANCE ALLOWANCES.....	11
GROUP 15 FRAME AND BRACKETS.....	11
18 BODY.....	11
22 MISCELLANEOUS BODY ACCESSORIES.....	24
23 GENERAL USE STANDARDIZED PARTS.....	26
26 TOOLS AND EQUIPMENT.....	30
MAINTENANCE TOOLS FOR ORDNANCE PERSONNEL.....	31
NOTES.....	31
ALPHABETICAL INDEX.....	32
ORDNANCE AND MANUFACTURERS' PART NUMBER INDEX.....	34
STOCK NUMBER INDEX.....	45
ILLUSTRATIONS.....	52

MAJOR ITEM

The Body, Shop Truck, ST5 and ST6, is stored, issued and reviewed under "Major Items," ORD 3 SNL G-1. This item is nonexpendable.

INTRODUCTION

1. GENERAL. *a.* This list contains the following information for the maintenance, overhaul, and rebuild of shop truck body, ST5 and ST6:

- (1) Equipment and spare parts which are issued to the *using* arm or service for performing organizational maintenance. It supplements tables of organization and equipment, tables of basic allowances, and tables of allowances.
- (2) Estimated quantities of major items, component parts, and equipment stocked for maintenance and rebuild.

b. Explanation of reference symbols (such as H-1, NX, etc.) used throughout this catalog are included under heading NOTES.

c. Ordnance installations will find classification codes in ORD 5-2, Alphabetical Index to Stock List of All Items, for Federal stock numbers listed herein.

d. For prices of items contained herein, see the appropriate catalog of the ORD 5-3 series.

e. For full information relative to the Ordnance section of the Department of the Army Supply Catalog, including the purposes and uses thereof, the procedure followed, and the principles employed in its compilation, see ORD 1, Introduction and Index; and the Ordnance Provision System Regulations (OPSR).

2. REQUISITION NOTES. If the exact item requisitioned is not furnished or other action is necessary, the action taken by the supplying agency will be indicated on prescribed forms by standard symbols explaining the exact nature of the action.

Note. REQUISITIONING OF STOCK ITEMS. When requisitioning an item containing the note "Issue until stock is exhausted, then use . . ." the requisitioning agency will requisition the item being exhausted and not the superseding item whether the supersession is to an individual item or to a kit, set, or assembly. All requisitions received by supplying agencies will be processed accordingly.

3. UNIT OF ISSUE. The unit of Issue column lists the unit of issue for each item. This may be in the form of an actual unit of issue, such as "oz," "lb," etc., or, as in the case of most items, merely by the use of "each" designated by "ea."

4. QUANTITY INCORPORATED IN UNIT. The Quantity Incorporated in Unit column lists the actual quantity of the part required for the particular use indicated.

5. FIELD STOCK GUIDE. *a.* The Field Stock Guide column lists the quantities of spare parts and equipment to be used as a stock guide for medium and heavy maintenance organizations and field depots.

b. In order that the Ordnance Department at large may be able to make equitable distribution of the total stock of any one item, ordnance organization commanders should limit their requisitions and stocks to the *absolute minimum* requirements that are estimated to be necessary for *each* contemplated tactical operation. The chief ordnance officer of a force is responsible that various ordnance units in the force do *not* use this *same* number of major items in computing their stocks; for example, if there is a grand total of 168 ordnance maintenance trucks in the entire force, each ordnance unit in the force should not claim the entire 168 ordnance maintenance trucks as a basis for computing its stocks. The chief ordnance officer must allocate, for spare parts stockage purposes, the number of major items of the force among the various ordnance units. See "Supply Functions of Company," FM 9-10, Ordnance Field Maintenance.

6. DEPOT GUIDE. The Depot Guide column lists the quantities of spare parts and equipment estimated to be required for 1 year's maintenance of 100 major items.

7. INITIAL STOCKAGE GUIDE. The Initial Stockage Guide column lists the quantity of parts required to rebuild 100 major assemblies included in the major item, and also the quantity of parts required to rebuild 100 major items.

Note. Quantities reflected in Initial Stockage Guide column and *not* reflected in Field and Depot columns will indicate items normally required by and issued *only* to establishments engaged in rebuild.

8. PLAN FOR MAINTENANCE. Maintenance operations to be performed in each category of maintenance are indicated by the availability of spare parts as shown in a particular column or a symbol signifying authority to requisition them for use in that category of maintenance.

9. MAJOR ITEM DESIGNATION. The items covered by this catalog are parts of special equipment vehicles as defined in AR 700-105.

10. COMPONENTS OF KITS, SETS, AND ASSEMBLIES. Whenever any doubt might exist as to what items are included as components of kits, sets, or assemblies, an explanatory note or complete listing of such components is shown.

11. ATTACHING PARTS. Attaching parts, such as bolts, nuts, rivets, screws, washers, etc., are indented immediately under the item which they attach. Attaching parts for any attached item not procured will be found listed under their proper alphabetical listing in the appropriate group; but they will not be indented. Whenever two similar items having the same attaching parts, such as right and left fenders, are listed, they are placed one immediately following the other and the attaching parts for both are covered by a single listing under the second item.

12. STANDARD HARDWARE AND BULK MATERIAL. Ordnance standard hardware and bulk material (except such items as BATTERIES; electrical material; BEARINGS; and oil SEALS) applicable to this major item are summarized in subgroups 2304.1 and 2304.2 with all procurement quantities indicated.

13. DEFINITION OF LOCATIONAL TERMS. All like parts pertinent to the vehicle which are not interchangeable are designated *left* or *right* with respect to the vehicle when viewed from the rear facing forward.

14. NOMENCLATURE.

a. Items appearing within a subgroup that lists components of and items related to only one assembly or subassembly automatically assume as part of their official nomenclature the title of the pertinent subgroup. (Example—"CAP, pressure, assy" is an entry in subgroup 1812.37. The complete nomenclature of the item is "CAP, fuel tank pressure, assy"; "Fuel Tank" being the subgroup title.)

b. Items appearing within a subgroup that lists more than one group of related items are listed with their complete nomenclature. (Example—"GLASS, side window" is an entry in subgroup 1812.1. The complete nomenclature of the item is as shown, while the title of the subgroup is "Door and Window Glass, Curtains, and Guards.")

15. HOW TO FIND PARTS. This catalog is arranged and cross-indexed so that parts can be found easily even though only one of the several identifying factors is known. The various ways in which parts can be located are as follows:

a. If the general nomenclature only is known, but the subgroup location is not, refer to the alphabetical index in the back of the catalog. This index will give the subgroup in which the part is listed in detail. As the part names (basic nouns) are arranged in alphabetical order within this subgroup, the complete listing of the part can readily be found. Exceptions are for vehicular tools and equipment and general use standard parts which are summarized in their own respective subgroups.

b. If any one of the part numbers—stock, ordnance, or manufacturer's—is known, refer to the appropriate numerical index in the back of the catalog. These indexes will give the subgroup in which the part can be found by following the procedure in the previous paragraph with same exceptions.

16. INDEXES. Complete indexes, alphabetical and numerical in that order, are to be found at the back of the catalog. These indexes and contents are explained in brief at the beginning of the indexes.

17. STOCK NUMBERS. The prefix letter and number of the stock number (that is, G104, G103 or G167) usually signifies that the particular part or component originally was coded under the major item designation for that SNL, and does NOT mean that the part is used ONLY in that major item. All subsequent lists for different vehicles will include the same stock number for this same part.

18. STANDARD GOVERNMENT GROUPING. The parts listed in this catalog are arranged by groups and subgroups and alphabetically within these groups. Parts are grouped primarily on the basis of their function rather than location. This arrangement facilitates identification and selection of parts. Refer to paragraph 15.

15—FRAME AND BRACKETS

1504 Spare wheel carrier.

18—BODY

1801 Body mounting parts.
 1808 Ladder stowage.
 1812.1 Rear door latch and hinge.
 1812.2 Door and window glass, curtains, and guards.
 1812.31 Heater.
 1812.33 Heater fuel pumps.
 1812.35 Heater fuel filter.
 1812.37 Fuel tank.
 1812.4 Exhaust fan.
 1812.5 Weatherstrip.

1812.6 Wiring.
 1812.7 Switches.
 1812.8 Auxiliary lights and lamps.
 1812.9 Battery cable.

22—MISCELLANEOUS BODY ACCESSORIES

2201 Bows.
 2202 Reflectors.
 2210 Vehicular data plates.

23—GENERAL USE STANDARDIZED PARTS

2304.1 Standard hardware, etc.
 2304.2 Bulk material.

26—TOOLS AND EQUIPMENT

2602.1 Vehicular tools and equipment.

19. LIST OF ABBREVIATIONS. The following is a list of abbreviations appearing in this catalog:

ac.....	alternating current	hex.....	hexagonae
AG.....	Adjutant General	hex-hd.....	hexagon-head
al.....	aluminum	ID.....	inside diameter
amp.....	ampere	in.....	inch, inches
assy.....	assembly	incand.....	incandescent
b-hd.....	button head	L.....	light (weight)
br.....	brass	lb.....	pound(s)
cand-bay-base.....	candelabra bayonet base	med.....	medium
cd-pltd.....	cadmium-plated	mach.....	machine
contd.....	continued	MI.....	malleable iron
cop.....	copper (cuprum)	min.....	minimum
cp.....	candlepower	mtl.....	metal
dbld.....	double	MWO.....	Modification Work Order
dc.....	direct current	NC.....	National Coarse Thread
deg.....	degree (angle)	NF.....	National Fine Thread
diam.....	diameter	No.....	number
ea.....	each	NPT.....	National Taper Pipe Thread
elec.....	electric, electrician or electrical	°.....	degree (temperature)
etc.....	and so forth (et cetera)	OD.....	outside diameter
fil.....	filament	od.....	olive-drab
fil-hd.....	fillister-head	ORD.....	Ordnance (publications titles)
fl-hd.....	flat-head	ov-hd.....	oval head
ft.....	foot (or feet)	pkg.....	package
gal.....	gallon	pltd.....	plated
glvd.....	galvanized	psi.....	pounds per square inch
gr.....	grade	pt.....	point

QMC..... Quartermaster Corps
 rd-hd..... round-head
 rect..... rectangular
 reg..... regular
 S..... steel
 SAE..... Society of Automotive Engineers
 s-fin..... semifinished
 sgle-tun-fil..... single-tungsten-filament
 SNL..... Standard Nomenclature List

std..... standard
 stght..... straight
 TM..... Technical Manual
 USA..... United States Army
 v..... volt
 w..... watt
 w/..... with
 w/o..... without
 zn-pltd..... zinc plated

20. LIST OF MANUFACTURERS' SYMBOLS. The following is a list of symbols preceding the part numbers for manufacturers appearing in this catalog:

<i>Symbol</i>	<i>Manufacturer</i>	<i>Symbol</i>	<i>Manufacturer</i>
AC.....	A C Spark Plug Div. (General Motors Corp.)	RPD.....	Reid Products Div. (Standard Products Co.)
CAR.....	Carter Carburetor Corp.	SCC.....	Superior Coach Corp.
EVP.....	Evans Products Co.	STN.....	Stant Mfg. Co.
HKB.....	Hicks Body Co., Inc.	STP.....	Standard Products Co. (The)
PC.....	Packard Electric Div. (General Motors Corp.)	Z.....	Zenith Carburetor Div. (Bendix Aviation Corp.)

21. SUGGESTIONS. Notice of discrepancies or suggested changes should be directed to the Chief of Ordnance, Washington 25, D. C., ATTENTION: ORDFM-Pub.

(1) STOCK NO.	(2) ORDNANCE PART NO.	(3) DESCRIPTION	(4) UNIT OF ISSUE	(5) ORGANIZATIONAL ALLOWANCES—Per major item	(6) REFERENCE SYMBOLS
ORGANIZATIONAL MAINTENANCE ALLOWANCES					
VEHICULAR SPARE PARTS					
None authorized.					
ORGANIZATIONAL SPARE PARTS					
Organizational spare parts are listed in column 7, Organizational Allowances, of the Field and Depot Maintenance Allowances section.					
TOOLS AND EQUIPMENT					
Vehicular Tools and Equipment					
G227-7062571	7062571	BRACE, canvas cover support (collapsible type ST-6)-----	ea	4	NX
G227-7062546	7062546	COVER, canvas (collapsible type ST-6)-----	ea	1	NX
G227-7062545	7062545	CURTAIN, canvas (collapsible type ST-6)-----	ea	2	NX
G227-7062539	7062539	DUCT, air, canvas (collapsible type ST-6)-----	ea	1	NX
		FORM (ENVELOPE), WDAGO No 478, MWO and major unit assy replacement record and organizational equipment file.	ea	1 1	AG NX
		CATALOG, ORD 7-8 SNL G-227 Organizational, Field and Depot Maintenance Allowances.	ea	1 1	AG X
G227-7063267	7063267	ROPE, retaining, canvas cover and curtain (collapsible type ST-6)-----	ea	2	NX
G227-7063159	7063159	SUPPORT, canvas cover, assy (collapsible type ST-6)-----	ea	2	NX
Organizational Tool Sets					
None authorized.					

1 One each per major item to accompany material. Additional copies to be requisitioned from the Adjutant General.

(1) STOCK NO.	(2) ORDNANCE PART NO.	(3) DESCRIPTION	(4) UNIT OF ISSUE	(5) ORGANIZATIONAL ALLOWANCES—Per major item	(6) REFERENCE SYMBOLS
		ORGANIZATIONAL MAINTENANCE ALLOWANCES—Continued			
		Applicable Cleaning and Preserving Materials			
		The following items extracted from ORD 3 SNL K-1, are requisitioned as required. For usage see TM 9-850.			
38-B-2640	38-B-2640	BRUSH, paint, flat, mtl bound, med gr, 3 x 3¼ in.	ea		K-1 NX
42-C-20398	42-C-20398	CLOTH, abrasive, al oxide, sheet 9 x 11 in, gr 3/0-120. Issue until stock is exhausted, then use CLOTH 42-C-20363-50.)	ea		K-1 X
		or			
42-C-20363-50	42-C-20363-50	CLOTH, abrasive, al oxide, sheet 9 x 11 in, gr 3/0-120 unit pkg 50 sheet sleeve	pkg		K-1 X
		CLOTH, wiping, cotton,			
27-C-2684-880	27-C-2684-880	5 lb bag	ea		K-1 X
27-C-2690	27-C-2690	100 lb bag	ea		K-1 X
		COMPOUND, rust preventive, L,			
14-C-349-880	14-C-349-880	5 lb	ea		K-1 X
14-C-349-890	14-C-349-890	25 lb	ea		K-1 X
		COMPOUND, rust preventive, thin film,			
14-C-507	14-C-507	1 gal	ea		K-1 X
14-C-507-10	14-C-507-10	5 gal	ea		K-1 X
		ENAMEL, rust inhibiting, od,			
52-E-7574	52-E-7574	1 gal	ea		K-1 X
52-E-7574-75	52-E-7574-75	5 gal	ea		K-1 X
		ENAMEL, synthetic gloss. (See ORD 3 SNL K-1 for appropriate colors.)			
		ENAMEL, synthetic lustreless. (See ORD 3 SNL K-1 for appropriate colors.)			
		PAINT, gasoline-soluble, lustreless (paste). (For removable camouflage, insignia, and identification markings.) (See ORD 3 SNL K-1 for appropriate colors.)			
		SOLVENT, dry cleaning (QMC issue)	gal		QMC X
40-S-4037	40-S-4037	SPONGE, cellulose, coarse pore, rect, size 6 (med), 1½ x 3¼ x 5 in.	ea		K-1 X
		THINNER, enamel, synthetic,			
52-T-441-75	52-T-441-75	½ pint	ea		K-1 X
52-T-445	52-T-445	1 gal	ea		K-1 X
52-T-450	52-T-450	5 gal	ea		K-1 X

(1) STOCK NO.	(2) MFR'S PART NO.	(3) ORDNANCE PART NO.	(4) DESCRIPTION	(5) UNIT OF ISSUE	(6) QUANTITY INCORP- ORATED IN UNIT	(7) ORG. BTRY. OR TR. CO.	(8) FIELD Stock guide per 100 major items			(9) DEPOT Guide per 100 major items		(10) INITIAL STOCKAGE GUIDE		(11) REFERENCE SYMBOLS
							Med. maint.	Hr. maint.	Depot 30 days	Maint. (1 yr.)	Stock (1 yr.)	Per 100 unit assy. ref. builts.	Per 100 major item ref. builts.	
FIELD AND DEPOT MAINTENANCE ALLOWANCES														
GROUP 15—FRAME AND BRACKETS														
1504—Spare Wheel Carrier														
G227-5339591	HKB-1015	A339591	HINGE, spare wheel carrier, assy.	ea	2		1	1	2	1	10	5		G-9 X
H014-0537803		537803	NUT, cap, hex, S, olive-drab, ¼-16NF-2 (spare wheel to carrier stud).	ea	2	%	1	1	2	2	20	24		H-14 #X
H001-4027521		221157	NUT, hex, ⅜-24NF-2 (rear mud guard screw).	ea	8								(**)	H-1 X
H001-4027541		225831	NUT, hex, ⅜-24NF-2 (spare wheel carrier bracket to frame screw).	ea	4								(**)	H-1 X
H001-5027131		213928	SCREW, cap, ⅜-24NF-2 x 1 (spare wheel carrier bracket to frame).	ea	4								(**)	H-1 X
G227-5339779	HKB-1329	A339779	STUD, ⅜-16NF-2 x 2½ (spare wheel to carrier, w/NUT).	ea	2		1	1	2	1	10	5		G-9 X
H001-7025741		120382	WASHER, lock, ⅜ in (spare wheel carrier bracket to frame screw).	ea	4								(**)	H-1 X
GROUP 18—BODY														
1801—Body Mounting Parts														
G227-7062547		7062547	BOLT, eye, ⅜-20NF-2 x 3 (body lifting, lower section).	ea	4	%	1	1	2	2	16	10		X
H101-0428586		428586	BOLT, hex-hd, ½-20NF-2 x 1¼ (body center bracket to chassis frame).	ea	4								(**)	H-1 X

(1) STOCK NO.	(2) MFR'S PART NO.	(3) ORDNANCE PART NO.	(4) DESCRIPTION	(5) UNIT OF ISSUE	(6) QUANTITY INCORPORATED IN UNIT	(7) ORG. BTRY, OR TR. CO.	(8) FIELD Stock guide per 100 major items			(9) DEPOT Guide per 100 major items		(10) INITIAL STOCKAGE GUIDE	(11) REFERENCE SYMBOLS	
							Med. maint.	Hv maint.	Depot 30 days	Maint.	Stock (1 yr.)			Per 100 unit assy. re-builds.
FIELD AND DEPOT MAINTENANCE ALLOWANCES—Con.														
GROUP 18—BODY—Continued														
1801—Body Mounting Parts—Continued														
H101-0428733		428733	BOLT, hex-hd, $\frac{5}{8}$ -18NF-2 x $2\frac{1}{4}$ (body center bracket to chassis center gusset (2), rear bracket to chassis frame (4), rear gusset to chassis rear gusset (2)).	ea	8							(**)	H-1 X	
G227-7064246		7064246	HOOK, camouflage paulin rope to body.	ea	14			3	2	5	1	20	10	X
H001-0924146		104083	RIVET, b-hd, $\frac{1}{4}$ x $\frac{3}{4}$ ----	ea	28								(**)	H-1 X
H101-0218585		218585	NUT, hex, $\frac{1}{2}$ -20NF-2 (body lifting eye bolt).	ea	14	%							(**)	H-1 # X
H001-4179661		125653	NUT, hex, $\frac{1}{2}$ -20NF-2 (center bracket to chassis frame bolt).	ea	4								(**)	H-1 X
H101-0125629		125629	NUT, hex, $\frac{5}{8}$ -18NF-2 (body to chassis frame bolt (4), center bracket to chassis center gusset bolt (2), rear gusset to chassis rear gusset bolt (2)).	ea	24								(**)	H-1 X
G227-5645672		C145672	RAIL, rub, roof and sides (3 in x 139 $\frac{1}{2}$ in).	ea	4			1	1	2	1	10	10	X
H101-0165111		165111	SCREW, tapping, No 10-32NF-2 x $\frac{1}{2}$.	ea	164								(**)	H-1 X
H101-0215408		215408	SCREW, cap, $\frac{5}{16}$ -24NF-2 x 1 (center section panels).	ea	72								(**)	H-1 X
H001-5027821		213949	SCREW, cap, $\frac{1}{4}$ -20NF-2 x 1 (center section pillar).	ea	18								(**)	H-1 X
H101-0214156		214156	SCREW, cap, $\frac{1}{4}$ -20NF-2 x 3 (lower section pillar).	ea	10	%							(**)	H-1 # X

G227-5339673	HKB-193	A339673	SOCKET, flood light, lower (Includes PLATE).	ea	4	1	1	2	1	10	5	G-9	X
G227-5339672	HKB-192	A339672	SOCKET, flood light, upper (Includes PLATE)	ea	4	1	1	2	1	10	5	G-9	X
G227-5339611	HKB-141	A339611	SOCKET, support, ladder, w/WEBBING, assy.	ea	2	1	1	2	1	5	5	G-9	X
G227-5339781		A339781	SPRING, compression, body mounting, lower.	ea	2	1	1	2	1	10	10	G-9	X
G227-5339782	HKB-1331	A339782	SPRING, compression, body mounting, upper.	ea*	2	1	1	2	1	10	10	G-9	X
G227-5339590		A339590	STUD, body to chassis.	ea	8	4	2	6	4	40	10		X
G227-7063459		7063459	WASHER, lock, $\frac{5}{16}$ (center and lower section screw panel).	ea	72	75	25	100	72	720	720		X
H001-7124951		178581	WASHER, lock, $\frac{7}{16}$ x 1.260 (center section pillar screw).	ea	18						(**)	H-1	X
H001-7124981		178646	WASHER, lock, $\frac{1}{2}$ x 1.620 (center bracket to chassis frame bolt).	ea	8						(**)	H-1	X
H001-7124831		178632	WASHER, lock, $\frac{5}{8}$ x 1.620 (rear gusset to chassis bolt (8), body rear gusset to chassis rear gusset (4), body center bracket to chassis center gusset (4), body to chassis stud (16)).	ea	32						(**)	H-1	X
H001-7043771		120395	WASHER, plain, $\frac{7}{16}$ in (lower section pillar screw and lift eye bolt).	ea	14	%					(**)	H-1	# X
H001-7045621		120389	WASHER, plain, $\frac{7}{16}$ in (lower section pillar screw nut).	ea	14						(**)	H-1	X
1808-Ladder Stowage													
G227-7063458		7063458	BUMPER, screw to strap (rubber).	ea	2	%	2	4	2	20	50	# X	
H001-4135661		120361	NUT, mach serew, No 10-24NC-2 (strap screw (4), socket screw (8)).	ea	12	%					(**)	H-1	# X
H001-5126671		132051	SCREW, mach, No 10-24NC-2 x $\frac{3}{4}$ (socket to body).	ea	8	%					(**)	H-1	# X
H101-0132085		132085	SCREW, mach, No 10-24NC-2 x $\frac{2}{4}$ (strap to body).	ea	1	%					(**)	H-1	# X
H101-0177804		177804	SCREW, mach, No 10-24NC-2 x $\frac{2}{4}$ (strap to body).	ea	2	%					(**)	H-1	# X
H101-0177806		177806	SCREW, mach, No 10-24NC-2 x $\frac{3}{4}$ (strap to body).	ea	1	%					(**)	H-1	# X

SGV TD

(1) STOCK NO.	(2) MFR'S PART NO.	(3) ORDNANCE PART NO.	(4) DESCRIPTION	(5) UNIT OF ISSUE	(6) QUANTITY IN UNIT INCORPORATED	(7) ORG. ALLOW. OR TR. CO.	(8) FIELD Stock guide per 100 major items			(9) DEPOT Guide per 100 major items		(10) INITIAL STOCKAGE GUIDE		(11) REFERENCE SYMBOLS
							Med. maint.	Hv. maint.	Depot 30 days	Maint.	Stock (1 yr.)	Per 100 unit assy. re- builds.	Per 100 major item re- builds.	
			FIELD AND DEPOT MAINTENANCE ALLOWANCES—Con.											
			GROUP 18—BODY—Continued											
			1808—Ladder Stowage—Continued											
H003-0547502		547502	STRAP, 1 x 15 in (retaining ladder).	ea	2	%						(**)	H-3 # X	
G227-5339772		A339772	STRAP, retaining, w/SPRING, assy (Type IV).	ea	2	%		2	4	2	20		# X	
H001-7124621		178378	WASHER, lock, No 10 x 0.610 (strap to body screw (6), socket to body screw (16)).	ea	22	%						(**)	H-1 # X	
H101-0502246		502246	WASHER, plain, 1/32 ID x 1 OD x 0.094 thick (strap to body screw.)	ea	4	%						(**)	H-1 # X	
			1812.1—Rear Door Latch and Hinge											
G227-6292815	SCC-32589 HKB-1026	B292815	BOLT, finger latch, left rear door, upper and lower.	ea	2	%		1	1	2	1	10		G-9 # X
G227-5340004	HKB-1023	A340004	CASE, tumbler, right rear door, center, assy.	ea	1	---		1	1	2	1	5		G-9 X
H001-5148851		132908	SCREW, mach, No 10-32NF-2 x 1/2.	ea	4	---						(**)	H-1 X	
G227-7702991	HKB-1045	7702991	CHECK, left rear door, upper	ea	1	%		1	1	2	1	10		# X
G227-7702992	HKB-1044 RPD-2070	7702992	CHECK, right rear door, upper	ea	1	%		1	1	2	1	10		# X
G227-6292820	HKB-1058	B292820	CURTAIN, blackout, left rear door, w/GROMMET (less roller) (15/16 x 27/16). (Used with ROLLER B292818.)	ea	1	%		1	1	2	1	10		G-9 # X

G227-6292821	HKB-1056	B292821	ea	1	%	1	1	2	1	10	10	G-9 # X
			ea	1		1	1	2	1	10	10	G-9 # X
G227-5340005	HKB-1028	A340005	ea	1	%	1	1	2	1	10	10	G-9 # X
G227-5340006	HKB-1027	A340006	ea	1	%	1	1	2	1	10	10	G-9 # X
G227-7037311	HKB-1042	7037311	ea	1	%	1	1	2	1	5	5	# X
G227-5645691	HKB-1005	C145691	ea	2	%	1	1	2	1	10	10	G-9 # X
G227-6292814	HKB-1037	B292814	ea	2	%	1	1	2	1	5	5	G-9 # X
G227-5645914		C145914	ea	1	%	1	1	2	1	5	5	# X
H001-0811040		103374	ea	2	%						(**)	H-1 # X
H001-5148851		132908	ea	16	%						(**)	H-1 # X
H001-5090761		133812	ea	46	%						(**)	H-1 # X
H001-7043711		120393	ea	2	%						(**)	H-1 # X
1812.2-Door and Window Glass, Curtains, and Guards												
G227-6292822		B292822	ea	15		6	6	12	8	75	150	X
G227-6292819	HKB-1059	B292819	ea	1	%	1	1	2	1	10	10	G-9 # X
G227-6292821	HKB-1056	B292821	ea	12	%	5	5	10	12	120	120	G-9 # X
G227-7037324	SCC-32573	7037324	ea	1		2	2	4	1	12	20	X
G227-7037308	SCC-32575GG	7037308	ea	1		1	1	2	1	12	20	X
G227-5340011	HKB-1323	A340011	ea	1		2	2	4	1	12	20	G-9 # X

(1) STOCK NO.	(2) MFR'S PART NO.	(3) ORONANCE PART NO.	(4) DESCRIPTION	(5) UNIT OF ISSUE	(6) QUANTITY IN CORPO- RATED UNIT	(7) ORG. BTRY., OR TR. CO.	(8) FIELD Stock guide per 100 major items			(9) DEPOT Guide per 100 major items		(10) INITIAL STOCKAGE GUIDE		(11) REFERENCE SYMBOLS
							Med. maint.	Hv. maint.	Depot 30 days	Maint.	Stock (1 yr.)	Per 100 unit assy. re- builds.	Per 100 major item re- builds.	
FIELD AND DEPOT MAINTENANCE ALLOWANCES—CON.														
GROUP 18—BODY—Continued														
1812.2—Door and Window Glass, Curtains, and Guards—Continued														
G227-5645913	HKB-1325	C145913	GLASS, safety, front window and left rear door, w/FRAME, assy (24 $\frac{3}{4}$ in x 17 $\frac{1}{16}$ in x 1 $\frac{3}{32}$ in) (for ST6 body).	ea	1	---	2	2	4	1	8	8	G-9	X
G227-5645911	HKB-1326	C145911	GLASS, safety, right rear door, w/FRAME, assy (24 $\frac{5}{8}$ in x 22 in x 1 $\frac{3}{32}$ in) (for ST5 body).	ea	1	---	1	1	2	1	8	8	G-9	X
G227-5340012	HKB-1324	A340012	GLASS, safety, side window (21 $\frac{1}{16}$ in x 19 $\frac{1}{16}$ in x 1 $\frac{3}{32}$ in) (for ST6 body).	ea	12	---	6	6	12	14	144	240	G-9	X
G227-5645912	HKB-1327	C145912	GLASS, safety, side window, w/FRAME, assy (20 $\frac{1}{16}$ in x 23 $\frac{1}{16}$ in x 1 $\frac{3}{32}$ in) (for ST6 body).	ea	12	---	6	6	12	10	96	60	G-9	X
G227-7037310	SCC-32572	7037310	GLASS, side window (19 $\frac{1}{8}$ in x 22 $\frac{3}{4}$ in x $\frac{7}{32}$ in) (for ST5 body).	ea	12	---	6	6	12	14	144	240	G-9	X
G227-5340013	HKB-1043	A340013	GLAZING, plastic (used with 1 $\frac{3}{32}$ in GLASS) (for ST6 body).	ft	(4)	---	1	1	2	1	10	20	G-9	X
G227-5645918	-----	C145918	GUARD, left rear door and front window, w/SCREEN and HINGE, assy.	ea	2	---	1	1	2	1	8	8	G-9	X
G227-5645917	-----	C145917	GUARD, right rear door, w/SCREEN and HINGE, assy.	ea	1	---	1	1	2	1	4	4	G-9	X
G227-5645916	-----	C145916	GUARD, side window, w/SCREEN and HINGE, assy.	ea	12	---	6	6	12	5	48	48	G-9	X

H001-1076150		171354	SCREW, tapping, No 8-32NC-2 x 1/2.	ea	56															H-1	X	
G227-6292823	HKB-1321	B292823	GUIDE, side window blackout curtain.	ea	20		5	10	6	60										G-9	X	
G227-7063314		7063314	LATCH, side window guard, assy.	ea	12		4	8	6	60												X
G227-5340015	HKB-1328	A340015	LOCK, side window drop sash, left.	ea	12		3	2	4	36										G-9	X	
G227-7063358		7063358	LOCK, side window drop sash, right.	ea	12		3	2	4	36												X
G227-5645965	HKB-414L	C145965	RACK, lock, side window opening, left (30% in long).	ea	12		2	4	2	24										G-9	X	
G227-5645964	HKB-414R	C145964	RACK, lock, side window opening, right (30% in long).	ea	12		2	4	5	48										G-9	X	
G227-6292818	HKB-1322	B292818	ROLLER, blackout curtain, front, w/PIN and RATCHET (wood) (22% in long).	ea	15		5	10	6	60										G-9	X	
1812.31-Heater (Evanair)																						
2986-HV8274	EVP-HV8274		ARMATURE, circulating fan motor.	ea	1		1	2	1	8										G-9	X	
2986-HV8272	EVP-HV8272		ARMATURE, draft fan motor.	ea	1		1	2	1	8										G-9	X	
2986-HV8249	EVP-HV8249		BEARING, self-centering, circulating fan motor (Oilite).	ea	2		2	4	1	10										G-9	X	
2986-HV8250	EVP-HV8250		BEARING, self-centering, draft fan motor (Oilite).	ea	2		2	4	1	10										G-9	X	
G227-5339793	EVP-HV8294	A339793	BRUSH, motor, w/LEAD (circulating and draft fan) (carbon).	ea	4		4	8	4	40										G-9	X	
G227-6584793	EVP-HV203211	D84793	BURNER, w/HOUSING, assy.	ea	1		1	2	1	8										G-9	X	
H001-1028127		113982	SCREW, mach, 1/4-20NC-2 x 1 1/2.	ea	3															H-1	X	
G227-6584802	EVP-HV203234	D84802	BURNER, w/o HOUSING, assy.	ea	1		1	2	1	20										G-9	X	
H006-0210010		112877	BUSHING, pipe, 1/4 x 1/8 (fuel valve).	ea	1															H-6	X	
2986-HV9437	EVP-HV9437		BUTTERFLY, draft control.	ea	1		1	2	1	8										G-9	X	
G227-5339763	EVP-HV9246	A339763	CAPACITOR (CONDENSER), circulating fan motor, w/TERMINAL.	ea	1		2	4	2	20										G-9	X	
H001-1072145		172129	SCREW, tapping, No 8-32NC-2 x 3/8.	ea	6															H-1	X	
G227-5645798	EVP-HV203203	C145798	CHIMNEY, w/GASKET. (Issue until stock is exhausted, then use CHIMNEY 7062572.)	ea	1																X	
G227-7062572	EVP-204606	7062572	CHIMNEY, w/GASKET.	ea	1		1	2	1	5										G-9	X	

(1) STOCK NO.	(2) MFR'S PART NO.	(3) ORDNANCE PART NO.	(4) DESCRIPTION	(5) UNIT OF ISSUE	(6) QUANTITY INCORPORATED IN UNIT	(7) ORG. ALLOW. CO. BTRY. OR TR.	(8) FIELD Stock guide per 100 major items			(9) DEPOT Guide per 100 major items		(10) INITIAL STOCKAGE GUIDE		(11) REFERENCE SYMBOLS
							Med. maint.	Hr. maint.	Depot maint. 30 days	Maint. (1 yr.)	Stock (1 yr.)	Per 100 unit assy. re. builts.	Per 100 major item re. builts.	
FIELD AND DEPOT MAINTENANCE ALLOWANCES—Con.														
GROUP 18—BODY—Continued														
			1812.31—Heater (Evanair)—Continued											
G227-7702996	EVP-EH4907	7702996	CLIP, retaining, burner combustion ring, lower.	ea	3		3	3	6	2	15	15		X
G227-7063234	EVP-HV204607	7063234	COLLAR, flue, w/GASKET, assy.	ea	1		1	1	2	1	8	8		G-9
H006-0213130		114626	CONNECTOR, tube, 1/4 in (fuel valve to burner tubing).	ea	2							(**)		H-6
G227-6292581	EVP-HV203235	B292581	COVER, airdraft intake	ea	1		1	1	2	1	5	10		G-9
G227-5645806	EVP-HV203632	C145806	DOOR, lighting, w/FRAME	ea	1		1	1	2	1	5	10		G-9
H001-1028086		110583	SCREW, mach, No. 10-24NC-2 x 1/2.	ea	6							(**)		H-1
H006-0260425		114632	ELBOW, tube, 1/4 in (valve reducer).	ea	1							(**)		H-6
G148-0178300	EVP-HV202463	C145800	FAN (circulating)	ea	1		1	1	2	1	1	8		G-9
G227-5645799	EVP-HV203213	C145799	FAN (circulating), assy	ea	1		1	1	2	1	5	5		G-9
G227-5339783	EVP-HV9505	A339783	FAN, draft	ea	1		1	1	2	1	5	5		G-9
G227-5645801	EVP-HV203223	C145801	FAN, draft, assy	ea	1		1	1	2	1	5	5		G-9
G227-6292590	EVP-HV8042	B292590	FILTER, air, assy	ea	1		1	1	2	1	12	12		G-9
2986-HV9695	EVP-HV9695		GASKET, burner housing reducer plate.	ea	1		1	1	2	1	20	100		G-9
G227-6292580	EVP-HV9640	B292580	GASKET, burner to housing (asbestos).	ea	1		1	1	2	1	10	100		G-9
G227-5339787	EVP-HV9539	A339787	GASKET, combustion chamber chimney. (Issue until stock is exhausted, then use GASKET 7063506.)	ea	1							(†)		G-9
G227-7063506	EVP-HV12685	7063506	GASKET, combustion chamber chimney.	ea	1		1	1	2	1	10	100		G-9

G227-5339785	EVP-HV9538	A339785		ea	1							(†)	G-9	X	
			GASKET, combustion chamber flue, large. (Issue until stock is exhausted, then use GASKET 7063505.)	ea	1	1	1	1	1	1	1	10	100	G-9	X
G227-7063505	EVP-HV12686	7063505	GASKET, combustion chamber flue, large.	ea	1	1	2	1	1	1	1	10	100	G-9	X
2986-HV9641	EVP-HV9641		GASKET, lighting door frame to heater box (asbestos).	ea	1	2	4	1	1	1	1	10	100	G-9	X
2986-HV10004	EVP-HV10004		GASKET, lighting door window.	ea	1	1	2	1	1	1	1	10	100	G-9	X
2986-HV9656	EVP-HV9656		GLAND, switch panel fuel control valve.	ea	1	1	2	1	1	1	1	10	10	G-9	X
G227-7063242	EVP-HV203010	7063242	HEATER, assy.	ea	1	1	2	1	1	1	1	5	4	G-9	X
2986-EH1685	EVP-EH1685		HINGE, lighting door.	ea	1	1	2	1	1	1	1	5	10	G-9	X
G227-5339788	EVP-EH4666	A339788	KNOB, switch panel draft control rod.	ea	1	1	2	1	1	1	1	5	10	G-9	X
G227-7520173	EVP-EH10691	7520173	LATCH, lighting door.	ea	1	1	2	1	1	1	1	5	6	G-9	X
G227-6292589	EVP-HV8616	B292589	MOTOR, electric, circulating fan, assy.	ea	1	1	2	1	1	1	1	10	12	G-9	X
G227-6292588	EVP-HV8617	B292588	MOTOR, electric, draft fan, assy.	ea	1	1	2	1	1	1	1	10	12	G-9	X
H006-0230405		144306	NUT, flared tube fitting, 1/8 in (valve to burner tubing).	ea	2								(**)	H-6	X
H001-0716570		113102	NUT, mach screw, No 6-32NC-2 (lighting door hinge (2), lighting door (4)).	ea	6								(**)	H-1	X
H001-0811025		103361	PIN, cotter, 1/16 x 1/2 (draft fan butterfly control rod).	ea	1								(**)	H-1	X
G227-5339789	EVP-HV203202	A339789	RECTIFIER, current, fuel pump, assy.	ea	1	1	2	1	1	1	1	10	10	G-9	X
2986-HV9647	EVP-HV9647		REDUCER, burner fuel valve (1/4 in to 1/8 in).	ea	1	1	2	1	1	1	1	5	15	G-9	X
2986-HV9642	EVP-HV9642		REDUCER, burner pipe.	ea	1	1	2	1	1	1	1	5	15	G-9	X
G227-5339790	EVP-HV203224	A339790	RESISTOR, wiring system.	ea	1	1	2	1	1	1	1	10	12	G-9	X
G227-7702995	EVP-HV10547	7702995	RING, combustion, burner, lower.	ea	1	1	2	1	1	1	1	5	10	G-9	X
G709-7089774	EVP-HV10546	7089774	RING, combustion, burner, upper.	ea	1	1	2	1	1	1	1	5	10	G-9	X
H001-0924098		107567	RIVET, b-hd, 3/16 x 3 (lighting door hinge).	ea	1								(**)	H-1	X
2986-EH1756	EVP-EH1756		SCREEN, lighting door window.	ea	1	1	2	1	1	1	1	5	10	G-9	X
H001-1028054		100945	SCREW, mach, No 6-32NC-2 x 3/8 (lighting door plate).	ea	6								(**)	H-1	X
H001-1072085		172121	SCREW, tapping, No 6-32NC-2 x 1/2 (burner bulkhead).	ea	5								(**)	H-1	X
2986-VS1122	EVP-VS1122		SPRING, compression, draft fan butterfly control rod.	ea	1	1	2	1	1	1	1	10	12	G-9	X

(1) STOCK NO.	(2) MER'S PART NO.	(3) ORDNANCE PART NO.	(4) DESCRIPTION	(5) UNIT OF ISSUE	(6) QUANTITY INCORPORATED IN UNIT	(7) ORG. ALLOW. CO., BTRY. OR TR.	(8) FIELD Stock guide per 100 major items			(9) DEPOT Guide per 100 major items		(10) INITIAL STOCKAGE GUIDE		(11) REFERENCE SYMBOLS
							Med. maint.	Hv. maint.	Depot 30 days	Maint.	Stock (1 yr.)	Per 100 unit assy. re-builds.	Per 100 major item re-builds.	
FIELD AND DEPOT MAINTENANCE ALLOWANCES—Con.														
GROUP 18—BODY—Continued														
1812.31—Heater (Evonair)—Continued														
G227-6292583	EVP-HV9369	B292583	TRANSFORMER, wiring system (115 volt 150 VA secondary). (Issue until stock is exhausted, then use TRANSFORMER 7063233.)	ea	1		1	1	2	1	10	10	(†)	G-9 X
G227-7063233	EVP-HV14163	7063233	TRANSFORMER, wiring system (115 volt ac, 600 primary 12 volt 300 VA secondary).	ea	1		1	1	2	1	10	10		G-9 X G-9 X
H007-0218021		44-T-5080-5	TUBING, seamless, size 1/8 in. (fuel valve to burner).	ft	(†)							**		H-7 X
G227-6292579	EVP-HV203649	B292579	VALVE, fuel, burner, w/NEEDLE.	ea	1		1	1	2	1	12	15		G-9 X
G711-7033782	EVP-HV203236	7033782	VALVE, needle, switch panel fuel control.	ea	1		1	1	2	1	12	12		G-9 X
H001-7025561		131044	WASHER, lock, No. 6 (lighting door).	ea	6							**		H-1 X
G104-7089561	EVP-EH1687	7089561	WINDOW, lighting door.	ea	1		1	1	2	1	8	12		G-9 X
1812.33—Heater Fuel Pumps														
2986-HV10498	EVP-HV10498		ARMATURE, lower contact, w/breaker MAGNET and two contact POINTS, assy.	ea	2		1	1	2	1	10	30		G-9 X
2986-HV10519	EVP-HV10519		BELLOW, fuel pump.	ea	2		1	1	2	2	20	20		G-9 X
G227-5339778	EVP-HV8962	A339778	CAPACITOR, w/BRACKET.	ea	2		2	1	3	2	20	40		G-9 X
2986-HV10501	EVP-HV10501		COIL, electro magnet, w/upper CONTACT, lower contact ARM and threaded CORE, assy (6 v).	ea	2		1	1	2	2	20	20		G-9 X

2986-HV10517	EVP-HV10517	-----	GASKET, air seal, base.-----	ea	2	---	3	1	4	2	20	200	---	G-9	X
2986-HV10516	EVP-HV10516	-----	GASKET, bellows to fuel pump base.	ea	2	---	3	1	4	2	20	200	---	G-9	X
2986-HV10506	EVP-HV10506	-----	GASKET, bowl cap screw, lower (fibre).	ea	2	---	2	1	3	2	20	200	---	G-9	X
2986-HV10504	EVP-HV10504	-----	GASKET, bowl cap screw, upper (fibre).	ea	2	---	2	1	3	2	20	200	---	G-9	X
2986-HV10511	EVP-HV10511	-----	GASKET, bowl to fuel pump strainer base.	ea	2	---	2	1	3	2	20	200	---	G-9	X
2986-HV10512	EVP-HV10512	-----	GASKET, strainer base.-----	ea	2	---	4	2	6	2	20	200	---	G-9	X
2986-HV10514	EVP-HV10514	-----	GASKET, valve.-----	ea	4	---	4	2	6	4	40	400	---	G-9	X
G227-6292587	B292587	-----	PUMP, fuel, heater, assy.-----	ea	1	---	1	1	2	1	10	---	10	G-9	X
G227-5645803	C145803	-----	PUMP, fuel, heater, w/FILTER and capillary fuel LINE, assy.	ea	1	---	1	1	2	1	10	---	10	G-9	X
2986-HV10520	EVP-HV10520	-----	SPRING, pressure adjusting.-----	ea	2	---	3	1	4	2	20	60	---	G-9	X
2986-HV10507	EVP-HV10507	-----	SPRING, tension, strainer.-----	ea	2	---	3	1	4	2	20	60	---	G-9	X
2986-HV10510	EVP-HV10510	-----	STRAINER, fuel.-----	ea	2	---	1	1	2	1	10	---	---	G-9	X
2986-HV10513	EVP-HV10513	-----	VALVE, fuel pump (brass).-----	ea	4	---	2	1	3	2	20	20	---	G-9	X
1812.35—Heater Fuel Filter															
G227-7702986	EVP-HV10470	7702986	BAIL, bowl. (Issue until stock is exhausted, then use FILTER 7520250.)	ea	1	%	---	---	---	---	---	---	(†)	#	X
2986-HV10469	EVP-HV10469	-----	BOWL, glass. (Issue until stock is exhausted, then use FILTER 7520250.)	ea	1	%	---	---	---	---	---	---	(†)	G-9 #	X
2986-HV10467	EVP-HV10467	-----	ELEMENT, fuel filter. (Issue until stock is exhausted, then use FILTER 7520250.)	ea	1	%	---	---	---	---	---	---	(†)	G-9 #	X
G709-7089775	EVP-HV10475	7089775	ELEMENT, fuel filter. (Issue until stock is exhausted, then use FILTER 7520250.)	ea	1	%	---	---	---	---	---	---	(†)	G-9 #	X
G227-5339784	EVP-HV9395 Z-F286X1	A339784	FILTER, fuel, assy (optional with FILTER 7520250.)	ea	1	%	1	1	2	1	10	---	10	G-9 #	X
G227-7520250	EVP-HV10233 CAR-445S	7520250	FILTER, fuel, assy (optional with FILTER A339784).	ea	1	%	1	1	2	1	10	---	10	#	X
G709-7089776	EVP-HV10474	7089776	GASKET, bowl. (Issue until stock is exhausted, then use FILTER 7520250.)	ea	1	%	---	---	---	---	---	---	(†)	G-9 #	X
2986-HV10466	EVP-HV10466	-----	GASKET, bowl. (Issue until stock is exhausted, then use FILTER 7520250.)	ea	1	%	---	---	---	---	---	---	(†)	G-9 #	X

(1) STOCK NO.	(2) MFP'S PART NO.	(3) ORDNANCE PART NO.	(4) DESCRIPTION	(5) UNIT OF ISSUE	(6) QUANTITY INCORPORATED IN UNIT	(7) ORG. BTRY. OR TR. ALLOW. CO.	(8) FIELD Stock guide per 100 major items			(9) DEPOT Guide per 100 major items		(10) INITIAL STOCKAGE GUIDE		(11) REFERENCE SYMBOLS
							Med. maint.	Hv. maint.	Depot 30 days	Maint.	Stock (1 yr.)	Per 100 unit assy. re-builds.	Per 100 major item re-builds.	
FIELD AND DEPOT MAINTENANCE ALLOWANCES—Con.														
GROUP 18—BODY—Continued														
1812.37—Fuel Tank														
G227-5340002	HKB-1080	A340002	BOLT, 3/8-24NF-2 x 2 1/2 (strap) (ST6).	ea	2	%	1	1	2	2	2	20	---	G-9 # X
O600-6UKS311	STN-6990A	---	CAP, pressure, assy.---	ea	1	%	1	1	2	1	10	10	---	G-9 # X
G227-7520174	SCC-30318	7520174	CAP, pressure, assy (ST5)---	ea	1	%	1	1	2	1	10	10	---	G-9 # X
G104-2670200	AC-1515832	5329465	GASKET, sending unit---	ea	1	%	1	1	2	1	10	100	---	G-9 # X
G227-6292582	EVP-HV203233	B292582	LINE, fuel, heater fuel pump, assy, (capillary tube) (ST6).	ea	1	%	1	1	2	1	10	20	---	G-9 # X
G138-5645693	---	C145693	TANK, fuel, assy (45 gal) (ST6)	ea	1	---	---	---	---	---	---	5	---	G-9 X
G227-7712788	SCC-31982FF	7712788	TANK, fuel, assy (45 gal) (ST5)	ea	1	---	---	---	---	---	---	5	---	G-9 X
H007-0218080	---	44-T-5080-20	TUBING, seamless, size 3/16 in (heater fuel lines).	ft	(4)	%	---	---	---	---	---	(**)	---	H-7 # X
G057-0274190	SCC-32603FF	---	UNIT, sending (ST5)---	ea	1	---	1	1	2	1	10	20	---	G-9 X
G227-5645922	AC-1516648	C145922	UNIT, sending (ST6)---	ea	1	---	1	1	2	1	10	20	---	G-9 X
G227-5340003	HKB-1046 HKB-1090	A340003	VALVE, check, heater fuel line (ST6).	ea	1	---	1	1	2	1	10	10	---	G-9 X
1812.4—Exhaust Fan														
2986-HV8274	EVP-HV8274	---	ARMATURE, motor.---	ea	1	---	1	1	2	1	8	8	---	G-9 X
2986-HV8249	EVP-HV8249	---	BEARING, self-centering, motor.	ea	2	---	2	2	4	1	10	20	---	G-9 X
G227-5339793	EVP-HV8294	A339793	BRUSH, motor, w/LEAD (carbon).	ea	2	---	4	4	8	2	20	100	---	G-9 X
G227-7702989	EVP-HV8247	7702989	CAP, retaining, motor self-centering bearing.	ea	2	---	---	---	---	---	---	5	---	X
G227-5339763	EVP-HV9246	A339763	CAPACITOR (CONDENSER), dual, motor, w/TERMINAL.	ea	1	---	1	1	2	2	20	20	---	G-9 X
G148-0178300	EVP-HV202463	C145800	FAN (exhaust)---	ea	1	---	1	1	2	1	5	8	---	G-9 X

G227-5645799	EVP-HV203213	C145799	FAN (exhaust), assy	1	1	1	1	1	1	5	5	G-9	X
G227-6292589	EVP-HV8616	B292589	MOTOR, electric, assy	1	1	1	1	1	1	12	10	C-9	X
H001-4135621		120622	NUT, mach screw, No 8-32NC-2 (door control arm screw (1), lever screw (1), latch screw (2)).	4								H-1	X
H001-4417121		112726	PIN, cotter, $\frac{1}{16}$ x $\frac{1}{2}$ (door control link).	2								H-1	X
H101-0121222		121222	PIN, cotter, $\frac{3}{32}$ x $\frac{3}{4}$ (door control arm shaft retaining washer).	1								H-1	X
H001-5147551		132760	SCREW, mach, No 8-32NC-2 x $\frac{1}{2}$ (door control arm knob (1), latch (2)).	3								H-1	X
H101-0132766		132776	SCREW, mach, No 8-32NC-2 x 1 (door control arm (1), control lever (1)).	2								H-1	X
G227-7063230	EVP-HV12763	7063230	SPRING, door control arm shaft, left.	1	1	1	2	1	10	10			X
G227-7062669		7062669	SPRING, door control arm shaft, right.	1	1	1	2	1	10	10			X
H001-7124581		178364	WASHER, lock, No 8 x 0.610 (door control arm screw (1), lever screw (1), knob screw (1)).	3								H-1	X
H001-7045591		120388	WASHER, plain, $\frac{3}{8}$ in (retaining, door control arm shaft).	2								H-1	X
H001-7045491		120385	WASHER, plain, No 10 (door control arm screw (1), control lever screw (1), control lever link (2)).	4								H-1	X
1812.5-Weatherstrip													
G227-5339566	HKB-1062	A339566	WEATHERSTRIP, body moulding, w/RETAINER (rubber) (19 $\frac{1}{2}$ long).	12						5		G-9	X
G227-5340007	HKB-1077	A340007	WEATHERSTRIP, rear door (cord with $\frac{3}{4}$ in flange and sponge rubber, with duck covering).	(†)							40	G-9	X
G227-7063507	HKB-1255 STP-DD3B	7063507	WEATHERSTRIP, side window, lower (belt line 2 $\frac{1}{2}$ in).	12						5		G-9	X

(1) STOCK NO.	(2) MFR'S PART NO.	(3) ORDNANCE PART NO.	(4) DESCRIPTION	(5) UNIT OF ISSUE	(6) QUANTITY INCORPORATED IN UNIT ORG. BTRY. OR TR. CO.	(8) FIELD Stock guide per 100 major items			(9) DEPOT Guide per 100 major items		(10) INITIAL STOCKAGE GUIDE		(11) REFERENCE SYMBOLS
						Med. mainl.	Hv. mainl.	Depot 30 days	Maint.	Stock (1 yr.)	Per 100 unit as sy. ref. builds.	Per 100 major item ref. builds.	
FIELD AND DEPOT MAINTENANCE ALLOWANCES—CON.													
GROUP 18—BODY—Continued													
1812.6—Wiring													
H004-0115120	-----	501305	ADAPTER, split, S, 1/2 in electrical metallic tubing to 1/2NPT fitting. (Used with TUBING 7326922 and 7326921.)	ea	2	%	1	1	2	1	10	10	H-4 # X
H004-0115140	-----	501306	ADAPTER, split, S, 3/4 in electrical metallic tubing to 3/4NPT fitting. (Used with TUBING 44-T-5090-13.)	ea	16	%	5	3	8	9	90	90	H-4 # X
H004-0500391	-----	500391	BODY, socket, push button, threaded catch, br, shell, textile interior, 660 w, 250 v. (Used with outlet BOX 500720.)	ea	6	%	1	1	2	3	30	30	H-4 # X
17-B-24086	-----	17-B-24086	BOX, control, weatherproof, TYPE II.	ea	1	%	1	1	2	1	5	5	J-20 # X
H001-4135741	-----	134551	NUT, mach screw, 1/4-20NC-2.	ea	3	%	---	---	---	---	---	(**)	H-1 # X
H101-0133083	-----	133083	SCREW, mach, 1/4-20NC-2 x 3.	ea	1	%	---	---	---	---	---	(**)	H-1 # X
H101-0189421	-----	189421	SCREW, mach. 1/4-20NC-2 x 3 3/4.	ea	2	%	---	---	---	---	---	(**)	H-1 # X
H001-7124701	-----	174916	WASHER, lock, 1/4 x 0.760	ea	3	%	---	---	---	---	---	(**)	H-1 # X
H004-0500720	-----	500720	BOX, outlet, rectangular, rigid conduit, S, glvd, 3 1/2 x 2 1/4 x 1 1/2 deep, 3/4 in knockout (one rigid conduit knockout in each side and bottom) (interior lights).	ea	8	%	1	1	2	3	32	32	H-1 # X H-4 # X

H101-0111655	111655	ea	16	%						(**)	H-1 # X
H001-7124701	174916	ea	16	%	SCREW, tapping, No 14 x 3/4 in.						H-1 # X
H004-0119000	549041	ea	1	%	WASHER, lock, 1/4 x 0.760						H-1 # X
					BUSHING, reducing, conduit,						H-4 # X
					female, hex shoulder, 3/4 x 1/2.						
					(Used with TUBING						
					7326922.)						
H004-0120750	504920	ea	6	%	CAP, socket, br, threaded catch						H-4 # X
					fastening, 1/2 NPT, female.						
					(Used with outlet BOX						
					500720.)						
H004-0570072	570072	ea	6	%	CONNECTOR, box, 12°, CI,						H-4 # X
					rust proofed, 3/4 NPT, male x						
					1/2 NPT male. (Used with						
					outlet BOX 500720.)						
H004-0570082	570082	ea	2	%	CONNECTOR, box, electrical						H-4 # X
					metallic tubing, watertight,						
					sight, S, 1/2 NPT male. (Used						
					with TUBING, 7326922 and						
					7326921.)						
H101-0138566	138566	ea	2	%	WASHER, lock, 3/8 in.						H-1 # X
H004-0150420	570062	ea	1	%	CONNECTOR, box, reducing,						H-4 # X
					S, 3/4 in knockout to 1/2 in rigid						
					conduit. (Used with TUB-						
					ING 7326921.)						
H004-0501623	501623	ea	16	%	COUPLING, rigid conduit, w/						H-4 # X
					"chase" nipple, MI, glvd, 3/4						
					NPT. (Used with TUBING						
					44-T-5090-13.)						
H004-0570580	570580	ea	2	%	COVER, outlet box, rectangu-						H-4 # X
					lar, S, glvd, blank. (Used w/						
					BOX ORD-500720.)						
H004-0500704	500704	ea	6	%	COVER, outlet box, rectangu-						H-4 # X
					lar, S, glvd, duplex conveni-						
					ence outlet. (Use w/BOX						
					ORD-500720.)						
G227-7063375	7063375	ea	1	%	ELBOW, wiring (3/4 in). (Used						# X
					with TUBING 7326922.)						
G227-7063377	7063377	ea	1	%	NIPPLE (3/4 in). (Used with						# X
					TUBING 7326922.)						
H004-0347000	500366	ea	6	%	RECEPTACLE, attachment						H-4 # X
					plug cap, "Twist-Tite", du-						
					plex, parallel slot, flush						
					mounting, 2-wire, 15 amp 125						
					v, 10 amp 250 v. (Used with						
					BOX 500720.)						

(1) STOCK NO.	(2) MFR'S PART NO.	(3) ORDNANCE PART NO.	(4) DESCRIPTION	(5) UNIT OF ISSUE	(6) QUANTITY INCORPORATED IN UNIT	(7) ORG. ALLOW. CO. BTRY. OR TR.	(8) FIELD Stock guide per 100 major items			(9) DEPOT Guide per 100 major items		(10) INITIAL STOCKAGE GUIDE		(11) REFERENCE SYMBOLS
							Med. maint.	Hv. maint.	Depot 30 days	Maint.	Stock (1 yr.)	Per 100 unit assy. re-builds.	Per 100 major item re-builds.	
FIELD AND DEPOT MAINTENANCE ALLOWANCES—Con.														
GROUP 18—BODY—Continued														
1812.6—Wiring—Continued														
H001-6738321		144744	SCREW, tapping, No 14 x 3/4 in (outlet box cover).	ea	6	%						(**)		H-1 # X
G575-7062949		7062949	TERMINAL, cable (to heater junction box wiring).	ea	2	%	1	1	2	2	20			G-9 # X
G227-7062950		7062950	TUBING, electric (1/2 in). (Issue until stock is exhausted, then use TUBING 44-T-5090-9.)	ft	(†)	%							(†)	# X
G227-7062951		7062951	TUBING, electric (3/4 in). (Issue until stock is exhausted, then use TUBING 44-T-5090-13.)	ft	(†)	%							(†)	# X
H005-0881516		44-T-5090-9	TUBING, 1/2 in (wiring harness)	ft	(†)	%						(**)		H-5 # X
H005-0881520		44-T-5090-13	TUBING, 3/4 in (wiring harness)	ft	(†)	%						(**)		H-5 # X
H101-0138572		138572	WASHER, lock, 1 in (wiring harness).	ea	26	%						(**)		H-1 # X
1812.7—Switches														
H004-0506612		506612	BREAKER, circuit, 2-wire, no neutral, separate trip, surface mounting, 1-25 amp dble-pole breaker, 115/230 v ac.	ea	1	%	1	1	2	1	10			H-4 # X
H001-6738321		144744	SCREW, tapping, No. 14 x 3/4 in.	ea	4	%							(**)	H-1 # X
H001-7124701		174916	WASHER, lock, 1/4 x 0.760	ea	4	%							(**)	H-1 # X
G227-7062948		7062948	SWITCH, blackout light	ea	1	%	1	1	2	2	20			# X
H001-6738321		144744	SCREW, tapping, No 14 x 3/4 in.	ea	2	%							(**)	H-1 # X
H001-7124701		174916	WASHER, lock, 1/4 x 0.760	ea	2	%							(**)	H-1 # X

G148-0393791	EVP-HV8047	A339791	SWITCH, change over, double pull, double throw, 20A-125 v, ac, 35A-15 v, dc (heater draft fan (1), heater fuel pump current rectifier (1)).	ea	2	%	1	1	2	2	20	12	G-9 # X
G227-5340010	-----	A340010	SWITCH, dome light.	ea	1	%	1	1	2	1	10	5	G-9 # X
2986-HV4039	EVP-HV4039	-----	SWITCH, exhaust fan.	ea	1	%	1	1	2	1	10	10	G-9 # X
G227-5339792	EVP-HV9110	A339792	SWITCH, heater circulating fan, assy.	ea	1	%	1	1	2	1	10	10	G-9 # X
G227-6292586	EVP-HV9370	B292586	SWITCH, shut-off, heater fuel pump w/knurled NUT (Tip-over type).	ea	1	%	1	1	2	1	10	10	G-9 # X
H004-0504462	-----	504462	1812.8-Auxiliary Lights and Lamps	ea	6	%	9	3	12	30	300	300	H-4 # X
H104-0119294	-----	119294	LAMP, elec, incand, large, tun-fil, 115 v, inside frosted bulb, 50 w, rough service (m base, A-19 bulb, C-22 fil) (interior lighting) (outlet box).	ea	2	%	5	3	8	10	100	100	H-4 # X
H004-0504523	-----	504523	LAMP, elec, incand, min, 6-8 v, sgle-tun-fil, No 87, 15 cp (sngle contact cand bay base, S-8 bulb, C-2R fil) (dome light).	ea	1	%	3	1	4	5	50	50	H-4 # X
G227-5340008	-----	A340008	LAMP, neon glow, 115 v, 1 w, m screw base, G-10 bulb (black-out switch).	ea	2	%	1	1	2	1	6	6	# X
G227-5340009	-----	A340009	LENS, dome light.	ea	2	%	1	1	2	1	5	5	# X
H004-0500894	-----	500897	LIGHT, dome, assy.	ea	6	%	1	1	2	2	24	24	H-4 # X
G227-7702988	HKB-1010 PC-5279339	7702988	SHADE, light control clamp on, 1 15/16 in diam bottom hole, S, white enameled (Used with LAMP 504462).	ea	1	%	1	1	2	1	10	10	# X
H017-0540404	-----	540404	1812.9-Battery Cable	ea	1	%	1	1	2	1	10	10	# X
G227-7062511	-----	7064151 7062511	STRAP, ground, battery (17 in long)	ea	10	-----	2	2	4	5	50	50	G-9 X
-----	-----	-----	GROUP 22-MISCELLANEOUS BODY ACCESSORIES	ea	5	-----	1	1	2	3	30	20	X
-----	-----	-----	2201-Bows	ea	5	-----	1	1	2	3	30	20	X
-----	-----	-----	BOW, paulin, corner, assy.	ea	10	-----	2	2	4	5	50	50	G-9 X
-----	-----	-----	BOW, wood, paulin.	ea	5	-----	1	1	2	3	30	20	X

(1) STOCK NO.	(2) MFR'S PART NO.	(3) ORDNANCE PART NO.	(4) DESCRIPTION	(5) UNIT OF ISSUE	(6) QUANTITY IN UNIT	(7) ORG. ALLOW. CO. BTRY. OR TR.	(8) FIELD Stock guide per 100 major items			(9) DEPOT Guide per 100 major items		(10) INITIAL STOCKAGE GUIDE		(11) REFERENCE SYMBOLS
							Med. maint.	Hv. maint.	Depot 30 days	Maint. (1 yr.)	Stock (1 yr.)	Per 100 unit assy. re-builds.	Per 100 major item re-builds.	
FIELD AND DEPOT MAINTENANCE ALLOWANCES—CON.														
GROUP 22—MISCELLANEOUS BODY ACCESSORIES—Continued														
2202—Reflectors														
H017-0506102	-----	506102	REFLECTOR, amber, 4½ in diam.	ea	4	%	2	1	3	8	80	160	M-5 # X	
H017-0506101	-----	506101	REFLECTOR, ruby, 4½ in diam.	ea	4	%	2	1	3	8	80	160	M-5 # X	
H001-1076150	-----	171354	SCREW, tapping, No. 8-32NC-2 x ½.	ea	16	%	-----	-----	-----	-----	-----	(**)	H-1 # X	
2210—Vehicular Data Plates														
G227-7063282	-----	7063282	PLATE, vehicle name, automotive repair, load A.	ea	1	%	1	1	2	1	10	10	# X	
G227-7063283	-----	7063283	PLATE, vehicle name, automotive repair, load B.	ea	1	%	1	1	2	1	10	10	# X	
G227-7063284	-----	7063284	PLATE, vehicle name, electrical repair.	ea	1	%	1	1	2	1	10	10	# X	
G227-7063292	-----	7063292	PLATE, vehicle name, instrument bench.	ea	1	%	1	1	2	1	10	10	# X	
G227-7063285	-----	7063285	PLATE, vehicle name, instrument repair.	ea	1	%	1	1	2	1	10	10	# X	
G227-7063286	-----	7063286	PLATE, vehicle name, machine shop, load A.	ea	1	%	1	1	2	1	10	10	# X	
G227-7063287	-----	7063287	PLATE, vehicle name, machine shop, load B.	ea	1	%	1	1	2	1	10	10	# X	
G227-7063288	-----	7063288	PLATE, vehicle name, machine shop, load C.	ea	1	%	1	1	2	1	10	10	# X	
G227-7063289	-----	7063289	PLATE, vehicle name, machine shop, load D.	ea	1	%	1	1	2	1	10	10	# X	

Part No.	Part Name	ea	1	%	1	1	1	2	1	10	10	# X
G227-7063291	PLATE, vehicle name, signal corp.	ea	1		1	1	1	2	1	10	10	# X
G227-7063290	PLATE, vehicle name, small arms repair.	ea	1		1	1	1	2	1	10	10	# X
GROUP 23—GENERAL USE STANDARDIZED PARTS												
2304.1—Standard Hardware, etc.												
H101-0428733	BOLT, cap, hex-hd, s-fin, S, cd or zn-pltd, 5/8-18NF-2 x 2 1/4.	ea	(†)	%	8	8	16	6	6	64	80	H-1 # X
H101-0428586	BOLT, hex-hd, s-fin, S, cd or zn-pltd, 1/2-20NF-2 x 1 3/4.	ea	(†)	%	10	10	20	8	8	80	40	H-1 # X
H006-0210010	BUSHING, pipe, shoulder, br, 1/4 x 1/2.	ea	(†)	%	2	2	4	1	1	14	12	H-6 # X
H006-0213130	CONNECTOR, tube, compression, ball sleeve, br, 1/4 in tube, 1/2 in male pipe end (w/o nut or sleeve).	ea	(†)	%	3	3	6	2	2	24	30	H-6 # X
H006-0280425	ELBOW, tube, compression, ball sleeve, 90 deg. br, 1/4 in tube, 1/2 in male pipe end (w/o nut or sleeve).	ea	(†)	%	2	2	4	1	1	14	12	H-6 # X
H006-0230405	NUT, flared tube fitting, short, br, 1/4 in.	ea	(†)	%	3	3	6	2	2	24	30	H-6 # X
H001-4179661	NUT, hex, light, thick, s-fin, S, cd or zn-pltd: 1/2-20NF-2	ea	(†)	%	2	1	3	13	13	128	192	H-1 # X
H101-0125629	NUT, hex, reg, s-fin, S, cd or zn-pltd: 5/8-18NF-2	ea	(†)	%	96	96	192	79	79	768	1,132	H-1 # X
H001-4027521	NUT, mach screw, hex, br, No. 6 (0.138)-32NC-2.	ea	(†)	%	20	20	40	16	16	160	320	H-1 # X
H001-4027541	NUT, mach screw, hex, S, cd or zn-pltd: No. 8 (0.164)-32NC-2	ea	(†)	%	10	10	20	8	8	80	160	H-1 # X
H101-0218585	NUT, mach screw, hex, br, No. 6 (0.138)-32NC-2.	ea	(†)	%	35	35	70	28	28	280	420	H-1 # X
H001-0716570	NUT, mach screw, hex, S, cd or zn-pltd: No. 8 (0.164)-32NC-2	ea	(†)	%	18	18	36	14	14	144	216	H-1 # X
H001-4135621	PIN, cottier, split, S: 1/16 x 1/2	ea	(†)	%	6	6	12	5	5	48	72	H-1 # X
H001-4135661	PIN, cottier, split, S, pltd: 3/32 x 1	ea	(†)	%	36	36	72	29	29	288	432	H-1 # X
H001-4135741	PIN, cottier, split, S: 1/16 x 1/2	ea	(†)	%	8	7	15	6	6	60	90	H-1 # X
H001-0811025	PIN, cottier, split, S, pltd: 3/32 x 1	ea	(†)	%	19	19	38	15	15	150	200	H-1 # X
H001-0811040	PIN, cottier, split, S, pltd: 1/16 x 1/2	ea	(†)	%	38	37	75	30	30	300	400	H-1 # X
H001-4417121	PIN, cottier, split, S, pltd: 1/16 x 1/2	ea	(†)	%	38	37	75	30	30	300	400	H-1 # X
H101-0121222	PIN, cottier, split, S, pltd: 3/32 x 3/4	ea	(†)	%	19	19	38	15	15	150	200	H-1 # X

(1) STOCK NO.	(2) MER'S PART NO.	(3) ORDNANCE PART NO.	(4) DESCRIPTION	(5) UNIT OF ISSUE	(6) QUANTITY INCORPORATED IN UNIT	(7) ORG. BTRY OR TR ALLOW. CO.	(8) FIELD Stock guide per 100 major items		(9) DEPOT Guide per 100 major items		(10) INITIAL STOCKAGE GUIDE	(11) REFERENCE SYMBOLS
							Med. maint.	Hv. Dept 30 days	Maint.	Stock (1 yr.)		
FIELD AND DEPOT MAINTENANCE ALLOWANCES—Con.												
GROUP 23—GENERAL USE STANDARDIZED PARTS—Continued												
2304.1—Standard Hardware, etc.—Continued												
H001-0924098			RIVET, b-hd, S:	ea	(‡)	%	4	8	3	32	48	H-1 # X
H001-0924146		107567	$\frac{3}{16}$ x 3	ea	(‡)	%	12	23	90	896	1,344	H-1 # X
		104083	$\frac{1}{4}$ x $\frac{3}{4}$									
H001-5027131			SCREW, cap, hex-hd, S, ed or zn-pltd:	ea	(‡)	%	8	16	6	64	72	H-1 # X
H001-5027821		212928	$\frac{3}{16}$ -24NF-2 x 1	ea	(‡)	%	14	13	11	108	180	H-1 # X
H101-0214156		214156	$\frac{7}{16}$ -20NF-2 x 3	ea	(‡)	%	8	7	6	60	80	H-1 # X
H101-0215408		215408	SCREW, cap, hex-hd, S, 85,000 psi yield strength, ed or zn- pltd, $\frac{3}{16}$ -24NF-2 x 1.	ea	(‡)	%	126	126	101	1,008	1,440	H-1 # X
H001-5126671			SCREW, mach, fil-hd, S, cd or zn-pltd:	ea	(‡)	%	30	30	24	240	360	H-1 # X
H101-0132085		132051	No. 10 (0.190)-24NC-2 x $\frac{3}{4}$	ea	(‡)	%	4	4	3	30	24	H-1 # X
		132085	No. 10 (0.190)-24NC-2 x $\frac{2}{4}$.	ea	(‡)	%	8	7	6	60	48	H-1 # X
H101-0177804		177804	No. 10 (0.190)-24NC-2 x $\frac{2}{4}$.	ea	(‡)	%	4	4	3	30	24	H-1 # X
H101-0177806		177806	No. 10 (0.190)-24NC-2 x $\frac{3}{4}$.	ea	(‡)	%	46	46	37	368	552	H-1 # X
H001-5090761		133812	SCREW, mach, fl-hd, S, cd or zn-pltd, $\frac{1}{4}$ -20NC-2 x 3.	ea	(‡)	%	23	22	18	180	270	H-1 # X
H001-1028054		100945	SCREW, mach, rd-hd, br:	ea	(‡)	%	23	22	18	180	270	H-1 # X
H001-1028086		110583	No. 6 (0.138)-32NC-2 x $\frac{3}{8}$ - zn-pltd, $\frac{1}{4}$ -20NC-2 x 3.	ea	(‡)	%	12	11	9	90	72	H-1 # X
H001-1028127		113982	No. 10 (0.190)-24NC-2 x $\frac{1}{2}$ - $\frac{1}{4}$ -20NC-2 x $1\frac{1}{2}$	ea	(‡)	%						H-1 # X

Part Number	Description	ea	(‡)	%	12	11	23	9	90	135	H-1 # X
H001-5147551	SCREW, mach, rd-hed, S, cd or zn-pltd:										
H101-0132776	No. 8 (0.165)-32NC-2 x 1/2-	ea	(‡)	%	8	7	15	6	60	90	H-1 # X
H001-5148851	No. 8 (0.164)-32NC-2 x 1-	ea	(‡)	%	8	7	15	60	600	900	H-1 # X
H101-0133083	No. 10 (0.190)-32NF-2 x 1/2-	ea	(‡)	%	1	1	2	1	8	12	H-1 # X
H101-0189421	1/4-20NC-2 x 3	ea	(‡)	%	1	1	2	1	8	24	H-1 # X
H101-0165111	1/4-20NC-2 x 3/4	ea	(‡)	%	615	615	1,230	492	4,920	4,920	H-1 # X
H001-1072085	SCREW, tapping, cross-recess-oval-hd, taper-pt, S, cd or zn-pltd, No. 10 (0.190)-32NF-2 x 1/2.	ea	(‡)	%	19	19	38	15	150	150	H-1 # X
H001-0172145	SCREW, tapping, fil-hd, fluted-taper-pt, S, cd or zn-pltd:	ea	(‡)	%	23	22	45	18	180	180	H-1 # X
H101-0111655	No. 6 (0.138)-32NC-2 x 1/2-	ea	(‡)	%	60	60	120	48	480	480	H-1 # X
H001-1076150	SCREW, tapping, hex-hd, blunt-pt, sheet metal threads, S, cd or zn-pltd, No. 14 (0.243) x 3/4 in.	ea	(‡)	%	90	90	180	72	720	720	H-1 # X
H001-6738321	SCREW, tapping, rd-hd, fluted-taper-pt, S, cd or zn-pltd, No. 8 (0.164)-32NC-2 x 1/2.	ea	(‡)	%	45	45	90	36	360	360	H-1 # X
H003-0547502	SCREW, tapping, rd-hd, gimlet-pt, sheet metal threads, S, cd or zn-pltd, No. 14 (0.254) x 3/4 in.	ea	(‡)	%	3	2	5	2	20	20	H-3 # X
H001-7124951	STRAP, web, type 3 (clip on one end loop stitched down on other end) 1 x 15 in.	ea	(‡)	%	108	108	216	86	864	1,296	H-1 # X
H001-7124581	WASHER, lock, internal-external teeth, reg, S, cd or zn-pltd, 7/16 x 1.260 (1.220 to 1.260 in. OD).	ea	(‡)	%	23	22	45	18	180	180	H-1 # X
H001-7124621	WASHER, lock, internal-external teeth, S, cd or zn-pltd: No. 8 x 0.610	ea	(‡)	%	165	165	330	132	1,320	1,320	H-1 # X
H001-7124701	No. 10 x 0.610 (0.195 to 0.204 in ID x 0.580 to 0.610 in OD).	ea	(‡)	%	188	187	375	150	1,500	1,500	H-1 # X
H001-7124981	WASHER, lock, internal-external teeth, S, cd or zn-pltd: 7/8 x 0.760 (0.720 to 0.760 in. OD).	ea	(‡)	%	48	48	96	38	384	576	H-1 # X
H001-7124831	7/8 x 1.620 (1.590 to 1.620 in. OD).	ea	(‡)	%	192	192	384	154	1,536	2,304	H-1 # X
	5/8 x 1.620 (1.590 to 1.620 in. OD).	ea	(‡)	%	192	192	384	154	1,536	2,304	H-1 # X

(1) STOCK NO.	(2) MFR'S PART NO.	(3) ORDNANCE PART NO.	(4) DESCRIPTION	(5) UNIT OF ISSUE	(6) QUANTITY INCORPORATED IN UNIT	(7) ORG. BTRY. OR TR. CO. ALLOW.	(8) FIELD Stock guide per 100 major items			(9) DEPOT Guide per 100 major items		(10) INITIAL STOCKAGE GUIDE	(11) REFERENCE SYMBOLS
							Med. maint.	Hq. maint.	Depot 30 days	Maint.	Stock (1 yr.)		
			FIELD AND DEPOT MAINTENANCE ALLOWANCES—Con.										
			GROUP 23—GENERAL USE STANDARDIZED PARTS—Continued										
			2304.1—Standard Hardware, etc.—Continued										
			WASHER, lock, internal teeth, reg, S, cd or zn-pltd:										
			$\frac{7}{8}$ in.-----	ea	(†)	%	12	12	24	10	96	144	H-1 # X
H101-0138566	-----	138566	1 in.-----	ea	(†)	%	156	156	312	125	1,248	1,872	H-1 # X
H101-0138572	-----	138572	WASHER, lock, med, S, cd or zn-pltd:										
			No. 6 (0.138)-----	ea	(†)	%	75	75	150	60	600	600	H-1 # X
H001-7025561	-----	131044	$\frac{1}{4}$ in.-----	ea	(†)	%	75	75	150	60	600	600	H-1 # X
H001-7025681	-----	120380	$\frac{3}{8}$ in.-----	ea	(†)	%	24	24	48	19	192	240	H-1 # X
H001-7025741	-----	120382	WASHER, plain, SAE std, S, cd or zn-pltd:										
			$\frac{5}{16}$ in ($\frac{1}{16}$ thick) ID x $\frac{1}{16}$ OD x $\frac{1}{16}$ thick.	ea	(†)	%	8	8	16	6	64	64	H-1 # X
H001-7043711	-----	120393	$\frac{5}{16}$ in ($\frac{1}{16}$ thick) ID x $\frac{1}{16}$ OD x $\frac{1}{16}$ thick.	ea	(†)	%	56	56	112	45	448	448	H-1 # X
H001-7043771	-----	120395	$\frac{3}{16}$ in ($\frac{1}{16}$ thick) ID x $\frac{1}{16}$ OD x $\frac{1}{16}$ thick.	ea	(†)	%	16	16	32	13	128	128	H-1 # X
H101-0502246	-----	502246	WASHER, plain, special S, cd or zn-pltd, $\frac{1}{32}$ ID x 1 OD x $\frac{3}{32}$ thick.	ea	(†)	%							
			WASHER, plain, US std, S, cd or zn-pltd:										
			No. 10 ($\frac{1}{4}$ ID x $\frac{1}{16}$ OD x $\frac{3}{64}$ thick).	ea	(†)	%	18	18	36	14	144	144	H-1 # X
H001-7045491	-----	120385	$\frac{3}{8}$ in ($\frac{1}{16}$ ID x 1 OD x $\frac{3}{64}$ thick).	ea	(†)	%	8	8	16	6	64	64	H-1 # X
H001-7045591	-----	120388	$\frac{1}{16}$ in ($\frac{1}{2}$ ID x $\frac{1}{4}$ OD x $\frac{1}{64}$ thick).	ea	(†)	%	56	56	112	45	448	448	H-1 # X
H001-7045621	-----	120389	$\frac{1}{16}$ in ($\frac{1}{2}$ ID x $\frac{1}{4}$ OD x $\frac{1}{64}$ thick).	ea	(†)	%							

2304.2—Bulk Material

H007-0218021	44-T-5080-5	TUBING, cop, seamless, soft annealed: Size 1/8 in, OD 0.126 in, thickness of wall 0.035 in.	ft	(†)	%	3	3	6	3	25	25	H-7 # X
H007-0218080	44-T-5080-20	Size 3/16 in, OD 0.313 in, thickness of wall 0.035 in.	ft	(†)	%	78	78	156	63	625	625	H-7 # X
H005-0881516	44-T-5090-9	TUBING, electrical metallic, glvd: Size 1/2 in	ft	(†)	%							H-5 # X
H005-0881520	44-T-5090-13	Size 3/4 in	ft	(†)	%							H-5 # X
GROUP 26—TOOLS AND EQUIPMENT												
2602.1—Vehicular Tools and Equipment												
G227-7062571	7062571	BRACE, canvas cover support (collapsible type ST-6).	ea					2		18		# NX
G227-7062546	7062546	COVER, canvas (collapsible type ST-6).	ea					2		18		# NX
G227-7062545	7062545	CURTAIN, canvas (collapsible type ST-6).	ea					2		18		# NX
G227-7062539	7062539	DUCT, air canvas (collapsible type ST-6).	ea					2		18		# NX
G227-7063267	7063267	ROPE, retaining, canvas cover and curtain (collapsible type ST-6).	ea					11		108		# NX
G227-7063159	7063159	SUPPORT, canvas cover, assy (collapsible type ST-6).	ea					2		18		# NX

MAINTENANCE TOOLS FOR ORDNANCE PERSONNEL

No special tools are required by Ordnance organizations for the maintenance of shop truck body, ST5 and ST6.

NOTES

- NX Items marked by NX are nonexpendable.
X Items marked by X are expendable.
G-9 Item used in two or more G groups (automotive major items). It is stored, issued, and reviewed under its pertinent stock number.
H-1 This item is stored, issued, and reviewed under ORD 5 SNL H-1.
H-3 This item is stored, issued, and reviewed under ORD 5 SNL H-3.
H-4 This item is stored, issued, and reviewed under ORD 5 SNL H-4.
H-5 This item is stored, issued, and reviewed under ORD 5 SNL H-5.
H-6 This item is stored, issued, and reviewed under ORD 5 SNL H-6.
H-7 This item is stored, issued, and reviewed under ORD 5 SNL H-7.
J-20 This item is stored, issued, and reviewed under ORD 5 SNL J-20, Sec. 1.
K-1 This item is stored, issued, and reviewed under ORD 3 SNL K-1.
M-5 This item is used on major items covered by two or more lettered groups. See ORD 13 SNL M-5 for additional application. It is stored, issued, and reviewed under its pertinent stock number.
‡ As required.
† Available for issue until stock is exhausted.
** See subgroup 2304.
% The percent symbol (%) in an allowance column indicates additional items not carried by this echelon, but which may be requisitioned when needed for repair.
The number symbol (#) in the note symbol column indicates those items authorized for direct replacement when required for organizational maintenance.
AG Adjutant General.
QMC Quartermaster Corps.

ALPHABETICAL INDEX

1. This index does not include certain parts, as follows

a. Tools and equipment which are summarized and listed in alphabetical sequence within subgroup 2602.1 (Vehicular Tools and Equipment).

b. Line items representing multiuse Ordnance standard parts which are summarized and listed in alphabetical sequence within subgroups 2304.1 (Standard Hardware, etc.) and 2304.2 (Bulk Material).

c. Attaching or specially associated parts which are indented under the related primary line item and not otherwise listed within the same subgroup; such parts are readily found by referring to the immediate item which requires their use. To find the attaching parts for the control box, for example, locate the BOX in this index and refer to the referenced subgroup (1812.6) where the indented attaching parts (NUT, SCREW, and WASHER) will be found.

2. There are indexed individual alphabetized listings, however, of nonstandard parts if they are not accompanied in this catalog pamphlet by the related primary item to which they pertain due to the latter being an unauthorized item and not available for listing in an ORD 8 to facilitate identification.

ITEM	GROUP	ITEM	GROUP
ADAPTER, wiring	1812. 6	COIL, heater fuel pump	1812. 33
ARMATURES		COLLAR, heater flue	1812. 31
Exhaust fan motor	1812. 4	CONNECTOR, box, wiring	1812. 6
Heater fan motor	1812. 31	COUPLING, wiring	1812. 6
Heater fuel pump	1812. 33	COVERS	
BAIL, heater fuel filter bowl	1812. 35	Heater aircraft intake	1812. 31
BEARINGS		Wiring outlet box	1812. 6
Exhaust fan motor	1812. 4	CURTAINS	
Heater fan motor	1812. 31	Blackout,	
BELLOW, heater fuel pump	1812. 33	Rear door	1812. 1
BODY, wiring	1812. 6	Window	1812. 1
BOLTS		DOOR, heater lighting	1812. 31
Eye, body lifting	1801	ELBOW, wiring	1812. 6
Fuel tank	1812. 37	ELEMENT, heater fuel filter	1812. 35
Rear door finger latch	1812. 1	FANS	
BOW, paulin	2201	Exhaust	1812. 4
BOWL, glass, heater fuel filter	1812. 35	Heater	1812. 31
BOX, wiring	1812. 6	FILTER, air, heater	1812. 31
BREAKER, circuit, switch	1812. 7	GASKETS	
BRUSHES		Fuel tank sending unit	1812. 37
Exhaust fan motor	1812. 4	Heater	1812. 31
Heater circulating and draft fan motor	1812. 31	Heater fuel filter	1812. 35
BUMPER, ladder stowage screw to strap	1808	Heater fuel pump	1812. 33
BURNER, heater	1812. 31	GLAND, heater switch panel fuel control valve	1812. 31
BUSHING, wiring	1812. 6	GLASS, door and window	1812. 2
BUTTERFLY, heater draft control	1812. 31	GLAZING, plastic	1812. 2
CAPACITORS		GUARD, door and window	1812. 2
Exhaust fan motor	1812. 4	GUIDE, side window blackout curtain	1812. 2
Heater circulating fan motor	1812. 31	HANDLE, rear door	1812. 1
Heater fuel pump	1812. 33	HINGES	
CAPS		Door	1812. 1
Exhaust fan	1812. 4	Heater, lighting door	1812. 31
Pressure, fuel tank	1812. 37	Spare wheel carrier	1504
Wiring	1812. 6	HOLDER, door	1812. 1
CHANNEL, blackout curtain	1812. 1	HOOK, camouflage paulin rope to body	1801
CHECK, upper, rear door	1812. 1	KNOB, heater switch panel draft control rod	1812. 31
CHIMNEY, heater	1812. 31		
CLIP, heater burner combustion ring	1812. 31		

ITEM	GROUP	ITEM	GROUP
LAMP, auxiliary	1812. 8	SHADE, auxiliary light control clamp on	1812. 8
LATCHES		SOCKETS	
Heater lighting door	1812. 31	Flood light	1801
Side window guard	1812. 2	Ladder support	1801
LENS, auxiliary dome light	1812. 8	SPRINGS	
LIGHT, dome, auxiliary	1812. 8	Body mounting	1801
LINE, fuel, fuel tank	1812. 37	Exhaust fan door control arm shaft	1812. 4
LOCKS		Heater draft fan butterfly control rod	1812. 31
Rear door	1812. 1	Heater fuel pump	1812. 33
Side window drop sash	1812. 2	STRAINER, fuel, heater fuel pump	1812. 33
MOTORS		STRAPS	
Electric,		Battery cable	1812. 8
Exhaust fan	1812. 4	Ladder stowage	1808
Heater fan	1812. 31	STUDS	
NIPPLE, wiring	1812. 6	Body to chassis	1801
NUT, spare wheel to carrier stud	1504	Spare wheel to carrier	1504
PLATE, vehicle name	2210	SWITCHES	1812. 7
PUMP, fuel, heater	1812. 33	TANK, fuel	1812. 37
RACK, side window opening	1812. 2	TERMINAL, wiring cable	1812. 6
RAIL, roof and side	1801	TRANSFORMER, heater wiring system	1812. 31
RECEPTACLE, wiring	1812. 6	TUBING, electric, wiring	1812. 6
RECTIFIER, heater fuel pump	1812. 31	UNIT, sending, fuel tank	1812. 37
REDUCER, heater	1812. 31	VALVES	
REFLECTORS, amber and ruby	2202	Fuel tank heater fuel line	1812. 37
RESISTOR, heater wiring system	1812. 31	Heater	1812. 31
RING, heater burner combustion	1812. 31	Heater fuel pump	1812. 33
ROLLER, blackout curtain	1812. 2	WASHER, lock, body screw panel	1801
SCREEN, heater lighting door window	1812. 31	WEATHERSTRIP	1812. 5
		WINDOW, heater lighting door	1812. 31

ORDNANCE AND MANUFACTURERS' PART NUMBER INDEX

This index is prepared in strict numerical sequence; that is, all letters or dashes prefixed, suffixed, or interspersed in the numbers are disregarded. For instance: *Z-F286X1* is in sequence as *2861*, but the complete number, including the manufacturer's symbol as the prefix, is shown in the listing. All ordnance numbers appear with symbol prefix ORD. Ordnance standard part numbers are not included generally in this index because they refer to standard items which may appear in various groups, or already have a common application in the supply system and are not necessarily peculiar within an index of this kind.

Part No.	Subgroup	Part No.	Subgroup	Part No.	Subgroup
STP-DD3B	1812. 5	EVP-HV8042	1812. 31	EVP-HV10514	1812. 33
HKB-141	1801	EVP-HV8047	1812. 7	EVP-HV10516	1812. 33
HKB-192	1801	EVP-HV8247	1812. 4	EVP-HV10517	1812. 33
HKB-193	1801	EVP-HV8249	1812. 31	EVP-HV10519	1812. 33
HKB-414R	1812. 2			EVP-HV10520	1812. 33
HKB-414L	1812. 2	EVP-HV8250	1812. 31	EVP-HV10546	1812. 31
CAR-445S	1812. 35	EVP-HV8272	1812. 31	EVP-HV10547	1812. 31
HKB-1005	1812. 1	EVP-HV8274	1812. 31	EVP-EH10691	1812. 31
HKB-1010	1812. 9			EVP-HV12685	1812. 31
HKB-1015	1504	EVP-HV8294	1812. 31	EVP-HV12686	1812. 31
HKB-1023	1812. 1			EVP-HV12763	1812. 4
HKB-1026	1812. 1	EVP-HV8616	1812. 31	EVP-HV14163	1812. 31
HKB-1027	1812. 1			SCC-30318	1812. 37
HKB-1028	1812. 1	EVP-HV8617	1812. 31	SCC-31982FF	1812. 37
HKB-1037	1812. 1	EVP-HV8962	1812. 33	SCC-32572	1812. 2
HKB-1042	1812. 1	EVP-HV9110	1812. 7	SCC-32573	1812. 2
HKB-1043	1812. 2	EVP-HV9246	1812. 31	SCC-32575GG	1812. 2
HKB-1044	1812. 1			SCC-32589	1812. 1
HKB-1045	1812. 1	EVP-HV9369	1812. 31	SCC-32603FF	1812. 37
HKB-1046	1812. 37	EVP-HV9370	1812. 7	ORD-D84793	1812. 31
HKB-1056	1812. 1	EVP-HV9395	1812. 35	ORD-D84802	1812. 31
	1812. 2	EVP-HV9428	1812. 33	ORD-C145672	1801
HKB-1058	1812. 1	EVP-HV9437	1812. 31	ORD-C145691	1812. 1
HKB-1059	1812. 2	EVP-HV9505	1812. 31	ORD-C145693	1812. 37
HKB-1062	1812. 5	EVP-HV9538	1812. 31	ORD-C145798	1812. 31
HKB-1077	1812. 5	EVP-HV9539	1812. 31	ORD-C145799	1812. 31
HKB-1080	1812. 37	EVP-HV9640	1812. 31		1812. 4
HKB-1090	1812. 37	EVP-HV9641	1812. 31	ORD-C145800	1812. 31
EVP-VS1122	1812. 31	EVP-HV9642	1812. 31		1812. 4
HKB-1255	1812. 5	EVP-HV9647	1812. 31	ORD-C145801	1812. 31
HKB-1321	1812. 2	EVP-HV9656	1812. 31	ORD-C145803	1812. 33
HKB-1322	1812. 2	EVP-HV9695	1812. 31	ORD-C145806	1812. 31
HKB-1323	1812. 2	EVP-HV10004	1812. 31	ORD-C145911	1812. 2
HKB-1324	1812. 2	EVP-HV10233	1812. 35	ORD-C145912	1812. 2
HKB-1325	1812. 2	EVP-HV10466	1812. 35	ORD-C145913	1812. 2
HKB-1326	1812. 2	EVP-HV10467	1812. 35	ORD-C145914	1812. 1
HKB-1327	1812. 2	EVP-HV10469	1812. 35	ORD-C145916	1812. 2
HKB-1328	1812. 2	EVP-HV10470	1812. 35	ORD-C145917	1812. 2
HKB-1329	1504	EVP-HV10474	1812. 35	ORD-C145918	1812. 2
HKB-1331	1801	EVP-HV10475	1812. 35	ORD-C145922	1812. 37
EVP-EH1685	1812. 31	EVP-HV10498	1812. 33	ORD-C145964	1812. 2
EVP-EH1687	1812. 31	EVP-HV10501	1812. 33	ORD-C145965	1812. 2
EVP-EH1756	1812. 31	EVP-HV10504	1812. 33	EVP-HV202463	1812. 31
RPD-2070	1812. 1	EVP-HV10506	1812. 33		1812. 4
Z-F286X1	1812. 35	EVP-HV10507	1812. 33	EVP-HV203010	1812. 31
EVP-HV4039	1812. 7	EVP-HV10510	1812. 33	EVP-HV203202	1812. 31
EVP-EH4666	1812. 31	EVP-HV10511	1812. 33	EVP-HV203203	1812. 31
EVP-EH4907	1812. 31	EVP-HV10512	1812. 33	EVP-HV203211	1812. 31
STN-6990A	1812. 37	EVP-HV10513	1812. 33		

ORDNANCE AND MANUFACTURERS' PART NUMBER INDEX—Continued

Part No.	Subgroup	Part No.	Subgroup	Part No.	Subgroup
EVP-HV203213	{ 1812. 31	ORD-A339790	1812. 31	ORD-7062547	1801
	{ 1812. 4	ORD-A339791	1812. 7	ORD-7062571	2602. 1
EVP-HV203223	1812. 31	ORD-A339792	1812. 7	ORD-7062572	1812. 31
EVP-HV203224	1812. 31			ORD-7062669	1812. 4
EVP-HV203226	1812. 33	ORD-A339793	{ 1812. 31	ORD-7062948	1812. 7
EVP-HV203233	1812. 37		{ 1812. 4	ORD-7062949	1812. 6
EVP-HV203234	1812. 31	ORD-A340002	1812. 37	ORD-7062950	1812. 6
EVP-HV203235	1812. 31	ORD-A340003	1812. 37	ORD-7062951	1812. 6
EVP-HV203236	1812. 31	ORD-A340004	1812. 1	ORD-7063159	2602. 1
EVP-HV203632	1812. 31	ORD-A340005	1812. 1	ORD-7063230	1812. 4
EVP-HV203649	1812. 31	ORD-A340006	1812. 1	ORD-7063233	1812. 31
EVP-204606	1812. 31	ORD-A340007	1812. 5	ORD-7063234	1812. 31
EVP-HV204607	1812. 31	ORD-A340008	1812. 8	ORD-7063242	1812. 31
ORD-B292579	1812. 31	ORD-A340009	1812. 8	ORD-7063267	2602. 1
ORD-B292580	1812. 31	ORD-A340010	1812. 7	ORD-7063282	2210
ORD-B292581	1812. 31	ORD-A340011	1812. 2	ORD-7063283	2210
ORD-B292582	1812. 37	ORD-A340012	1812. 2	ORD-7063284	2210
ORD-B292583	1812. 31	ORD-A340013	1812. 2	ORD-7063285	2210
ORD-B292586	1812. 7	ORD-A340015	1812. 2	ORD-7063286	2210
ORD-B292587	1812. 33	ORD-500366	1812. 6	ORD-7063287	2210
ORD-B292588	1812. 31	ORD-500391	1812. 6	ORD-7063288	2210
ORD-B292589	{ 1812. 31	ORD-500704	1812. 6	ORD-7063289	2210
	{ 1812. 4	ORD-500720	1812. 6	ORD-7063290	2210
ORD-B292590	1812. 31	ORD-500897	1812. 8	ORD-7063291	2210
ORD-B292814	1812. 1	ORD-501305	1812. 6	ORD-7063292	2210
ORD-B292815	1812. 1	ORD-501306	1812. 6	ORD-7063314	1812. 2
ORD-B292818	1812. 2	ORD-501623	1812. 6	ORD-7063358	1812. 2
ORD-B292819	1812. 2	ORD-504462	1812. 8	ORD-7063375	1812. 6
ORD-B292820	1812. 1	ORD-504523	1812. 8	ORD-7063377	1812. 6
ORD-B292821	{ 1812. 1	ORD-504920	1812. 6	ORD-7063458	1808
	{ 1812. 2	ORD-506101	2202	ORD-7063459	1801
ORD-B292822	1812. 2	ORD-506102	2202	ORD-7063505	1812. 31
ORD-B292823	1812. 2	ORD-506612	1812. 7	ORD-7063506	1812. 31
ORD-A339566	1812. 5	ORD-537803	1504	ORD-7063507	1812. 5
ORD-A339590	1801	ORD-540404	2201	ORD-7064151	2201
ORD-A339591	1504	ORD-549041	1812. 6	ORD-7064246	1801
ORD-A339611	1810	ORD-570062	1812. 6	ORD-7089561	1812. 31
ORD-A339672	1801	ORD-570072	1812. 6	ORD-7089774	1812. 31
ORD-A339673	1801	ORD-570082	1812. 6	ORD-7089775	1812. 35
ORD-A339763	{ 1812. 31	ORD-570580	1812. 6	ORD-7089776	1812. 35
	{ 1812. 4	AC-1515832	1812. 37	ORD-7520173	1812. 31
ORD-A339772	1808	AC-1516648	1812. 37	ORD-7520174	1812. 37
ORD-A339778	1812. 33	PC-5279339	1812. 9	ORD-7520250	1812. 35
ORD-A339779	1540	ORD-5329465	1812. 37	ORD-7702986	1812. 35
ORD-A339781	1801	ORD-7033782	1812. 31	ORD-7702988	1812. 9
ORD-A339782	1801	ORD-7037308	1812. 2	ORD-7702989	1812. 4
ORD-A339783	1812. 31	ORD-7037310	1812. 2	ORD-7702991	1812. 1
ORD-A339784	1812. 35	ORD-7037311	1812. 1	ORD-7702992	1812. 1
ORD-A339785	1812. 31	ORD-7037324	1812. 2	ORD-7702995	1812. 31
ORD-A339787	1812. 31	ORD-7062511	2201	ORD-7702996	1812. 31
ORD-A339788	1812. 31	ORD-7062539	2602. 1	ORD-7712788	1812. 37
ORD-A339789	1812. 31	ORD-7062545	2602. 1		
		ORD-7062546	2602. 1		

STOCK NUMBER INDEX

This index includes two types of stock numbers which are not intermixed—the SNL prefix type (G057-0274190), and the stock class code (manufacturer's numerical symbol) prefix type (2986-VS1122). These numbers are each arranged numerically by types. H-, J-, and K-group numbers are not included generally in this index because they refer to standard items which may appear in various groups, or already have a common application in the supply system and are not necessarily peculiar within an index of this kind.

Stock No.	Subgroup	Stock No.	Subgroup	Stock No.	Subgroup
G057-0274190	1812. 37	G227-5645806	1812. 31	G227-7063233	1812. 31
G104-2670200	1812. 37	G227-5645911	1812. 2	G227-7063234	1812. 31
G104-7089561	1812. 31	G227-5645912	1812. 2	G227-7063242	1812. 31
G138-5645693	1812. 37	G227-5645913	1812. 2	G227-7063267	2602. 1
G148-0178300	1812. 31	G227-5645914	1812. 1	G227-7063282	2210
	1812. 4	G227-5645916	1812. 2	G227-7063283	2210
G148-0393791	1812. 7	G227-5645917	1812. 2	G227-7063284	2210
G227-5339566	1812. 5	G227-5645918	1812. 2	G227-7063285	2210
G227-5339590	1801	G227-5645922	1812. 37	G227-7063286	2210
G227-5339591	1504	G227-5645964	1812. 2	G227-7063287	2210
G227-5339611	1801	G227-5645965	1812. 2	G227-7063288	2210
G227-5339672	1801	G227-6292579	1812. 31	G227-7063289	2210
G227-5339673	1801	G227-6292580	1812. 31	G227-7063290	2210
G227-5339763	1812. 31	G227-6292581	1812. 31	G227-7063291	2210
	1812. 4	G227-6292582	1812. 37	G227-7063292	2210
G227-5339772	1808	G227-6292583	1812. 31	G227-7063314	1812. 2
G227-5339778	1812. 33	G227-6292586	1812. 7	G227-7063358	1812. 2
G227-5339779	1504	G227-6292587	1812. 33	G227-7063375	1812. 6
G227-5339781	1801	G227-6292588	1812. 31	G227-7063377	1812. 6
G227-5339782	1801	G227-6292589	1812. 31	G227-7063458	1808
G227-5339783	1812. 31		1812. 4	G227-7063459	1801
G227-5339784	1812. 35	G227-6292590	1812. 31	G227-7063505	1812. 31
G227-5339785	1812. 31	G227-6292814	1812. 1	G227-7063506	1812. 31
G227-5339787	1812. 31	G227-6292815	1812. 1	G227-7063507	1812. 5
G227-5339788	1812. 31	G227-6292818	1812. 2	G227-7064246	1801
G227-5339789	1812. 31	G227-6292819	1812. 2	G227-7520173	1812. 31
G227-5339790	1812. 31	G227-6292820	1812. 1	G227-7520174	1812. 37
G227-5339792	1812. 7	G227-6292821	1812. 1	G227-7520250	1812. 35
G227-5339793	1812. 31		1812. 2	G227-7702986	1812. 35
	1812. 4	G227-6292822	1812. 2	G227-7702988	1812. 9
G227-5340002	1812. 37	G227-6292823	1812. 2	G227-7702989	1812. 4
G227-5340003	1812. 37	G227-6584793	1812. 31	G227-7702991	1812. 1
G227-5340004	1812. 1	G227-6584802	1812. 31	G227-7702992	1812. 1
G227-5340005	1812. 1	G227-7037308	1812. 2	G227-7702995	1812. 31
G227-5340006	1812. 1	G227-7037310	1812. 2	G227-7702996	1812. 31
G227-5340007	1812. 5	G227-7037311	1812. 1	G227-7712788	1812. 37
G227-5340008	1812. 8	G227-7037324	1812. 2	G575-7062949	1812. 6
G227-5340009	1812. 8	G227-7062511	2201	G709-7089774	1812. 31
G227-5340010	1812. 7	G227-7062539	2602. 1	G709-7089775	1812. 35
G227-5340011	1812. 2	G227-7062545	2602. 1	G709-7089776	1812. 35
G227-5340012	1812. 2	G227-7062546	2602. 1	G711-7033782	1812. 31
G227-5340013	1812. 2	G227-7062547	1801	0600-6UKS311	1812. 37
G227-5340015	1812. 2	G227-7062571	2602. 1	2986-VS1122	1812. 31
G227-5645672	1801	G227-7062572	1812. 31	2986-EH1685	1812. 31
G227-5645691	1812. 1	G227-7062669	1812. 4	2986-EH1756	1812. 31
G227-5645798	1812. 31	G227-7062948	1812. 7	2986-HV4039	1812-7
G227-5645799	1812. 31	G227-7062950	1812. 6	2986-HV8249	1812. 31
	1812. 4	G227-7062951	1812. 6		1812. 4
G227-5645801	1812. 31	G227-7063159	2602. 1	2986-HV8250	1812. 31
G227-5645803	1812. 33	G227-7063230	1812. 4	2986-HV8272	1812. 31

STOCK NUMBER INDEX—Continued

Stock No.	Subgroup	Stock No.	Subgroup	Stock No.	Subgroup
2986-HV8274	1812. 31 1812. 4	2986-HV10466	1812. 35	2986-HV10511	1812. 33
2986-HV9437		2986-HV10467	1812-35	2986-HV10512	1812. 33
2986-HV9641	1812. 31	2986-HV10469	1812. 35	2986-HV10513	1812. 33
2986-HV9642	1812. 31	2986-HV10498	1812. 33	2986-HV10514	1812. 33
2986-HV9647	1812. 31	2986-HV10501	1812. 33	2986-HV10516	1812. 33
2986-HV9656	1812. 31	2986-HV10504	1812. 33	2986-HV10517	1812. 33
2986-HV9695	1812. 31	2986-HV10506	1812. 33	2986-HV00519	1812. 33
2986-HV10004	1812. 31	2986-HV10507	1812. 33	2986-HV10520	1812. 33
		2986-HV10510	1812. 33		

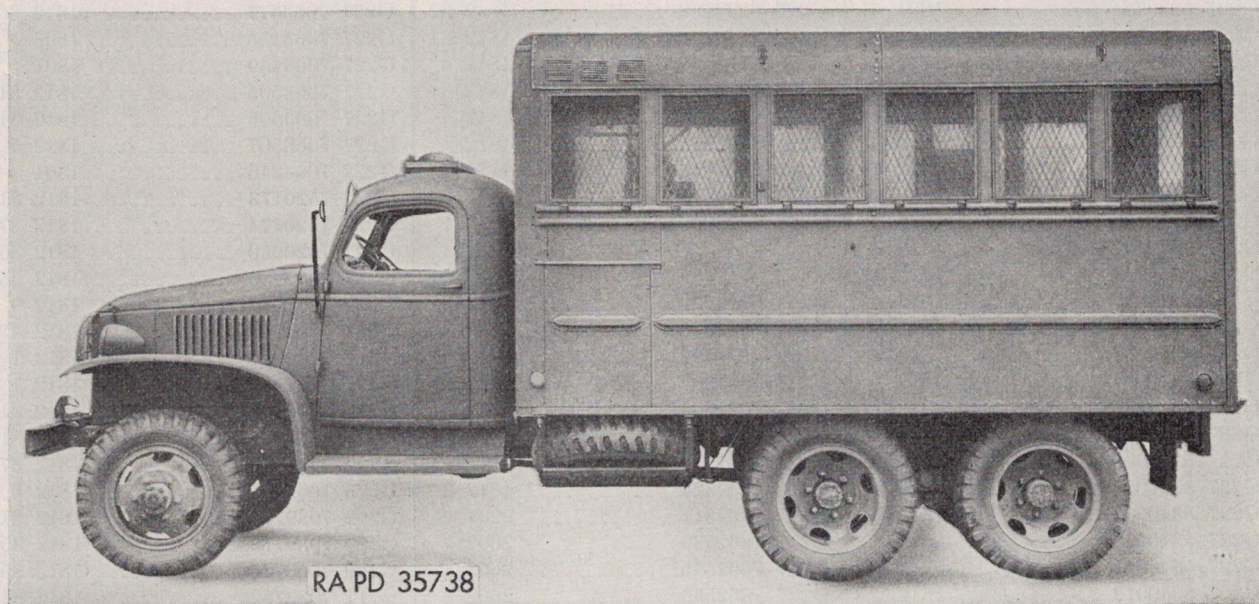


Figure 1. Truck with body, shop truck, ST5 (noncollapsible)—left side.

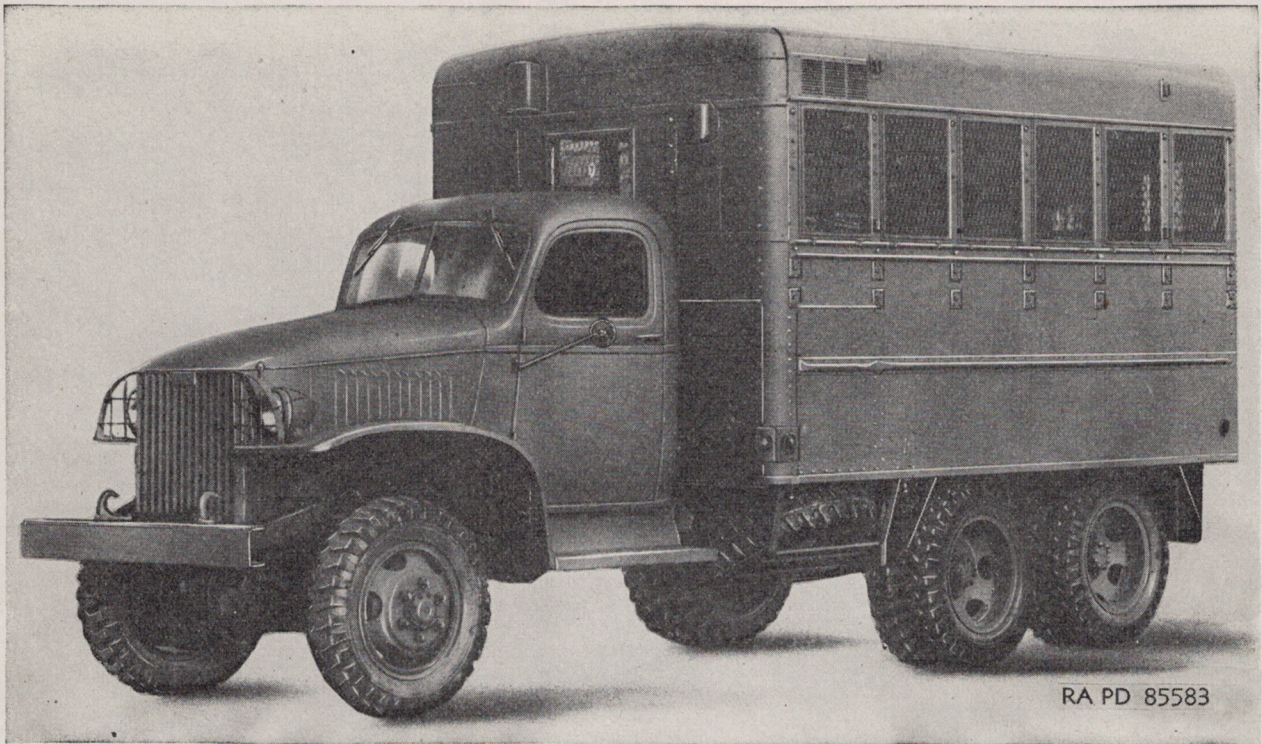


Figure 2. Truck with body, shop truck, ST6 (collapsible)—left front.

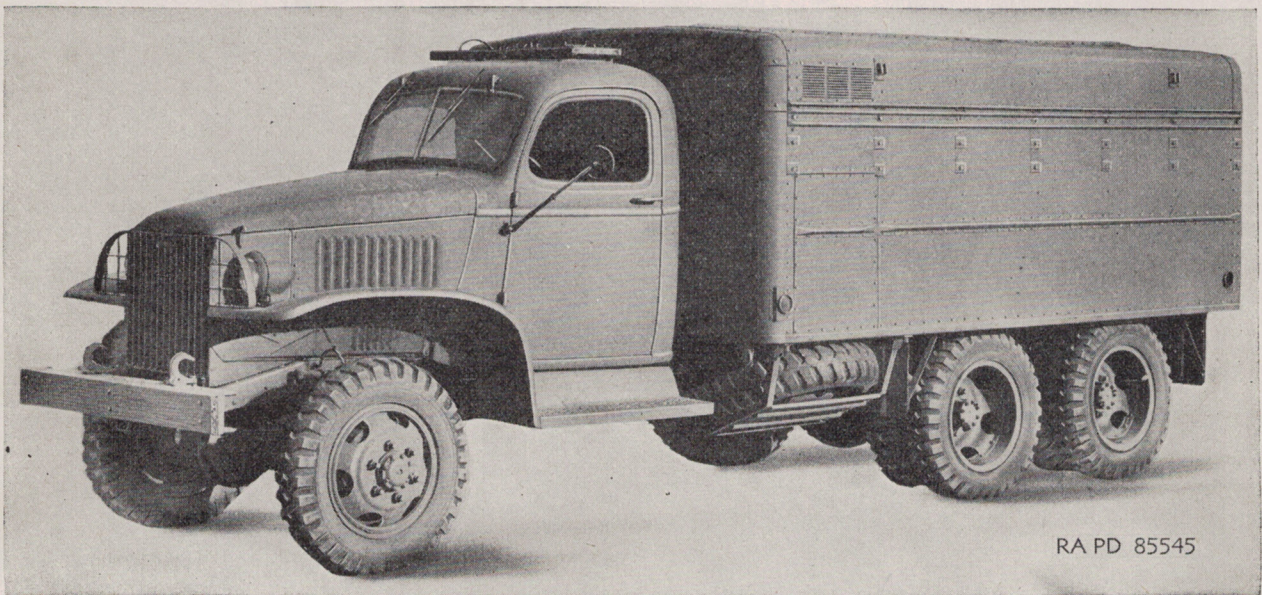


Figure 3. Truck with body, shop truck, ST6 (in collapsed position)—left front.

BBV
GEREGISTREERD