

6. JAD. g. OM. 1, 1/63

GEREGIS  
24 OCT 1955  
I. d. O.

L3-29

TM 5-8063

DEPARTMENT OF THE ARMY TECHNICAL MANUAL

---

BODY, CARGO, MILITARY BRIDGING  
(Mounted on 6 Ton Truck Chassis, 6 X 6,  
Four Dual Tires, 220 Inch Wheelbase,  
with Front Mounted Winch)

HOBBS MODEL

F-1407

This manual contains copyright material

DEPARTMENT OF THE ARMY

Washington 25, D. C., 15 August 1952

TM 5-8063 is published for the information and guidance of  
all concerned.

AG 451.21 (7 Aug. 52)

BY ORDER OF THE SECRETARY OF THE ARMY:

OFFICIAL:

WM. E. BERGIN  
Major General, USA  
The Adjutant General

J. LAWTON COLLINS  
Chief of Staff, United States Army

DISTRIBUTION:

ACTIVE ARMY:

Tech Svc (1); Tech Svc Bd (1); AFF (3); AA Comd (2); OS Maj Comd  
(2); Base Comd (2); MDW (2); Log Comd (2); A (5); CHQ (2); Div (2);  
Brig 5 (1); Regt 5 (1); Bn 5 (1); FT (1); Sch 5 (50); USMA (2);  
PMS&T 5 (1); Gen Dep (2) except Columbus (10); Dep 5 (10) POE (5);  
OSD (5); Ars (2); Div Engr (1); Engr Dist (1); Mil Dist (1); Two  
(2) copies to each of the following T/O&E's: 5-16N; 5-225; 5-226;  
5-247; 5-267A; 5-268; 5-328; 5-357; 5-367; 5-567; 5-621T; 5-627.

NG & ORC: One (1) copy to T/O&E units only, as listed above.

For explanation of distribution formula, see SR 310-90-1.

MAINTENANCE MANUAL  
AND  
PARTS IDENTIFICATION LIST

SGV TD

FOR  
BODY, CARGO, MILITARY BRIDGING  
SNL 78-9336.220-300

Manufactured For  
CORPS OF ENGINEERS  
U. S. ARMY  
by  
Hobbs Manufacturing Co.  
Ft. Worth, Texas  
P. O. 88-A-26610-100  
P. O. 88-A-28601-100

## TABLE OF CONTENTS

|        |                                  |
|--------|----------------------------------|
| PART 1 | DESCRIPTION AND DATA             |
|        | Sect. 1 Description              |
|        | Sect. 2 General Data             |
|        | Sect. 3 Accessories              |
| PART 2 | OPERATION                        |
|        | Sect. 1 Lights                   |
|        | Sect. 2 Ladders                  |
|        | Sect. 3 Winches                  |
|        | Sect. 4 Stake Racks              |
|        | Sect. 5 Tire Rack                |
| PART 3 | MAINTENANCE                      |
|        | Sect. 1 Lubrication              |
|        | Sect. 2 Electrical System        |
| PART 4 | PARTS IDENTIFICATION DRAWINGS    |
|        | Fig. 1 Body Assembly             |
|        | Fig. 2 Body Assembly             |
|        | Fig. 3 Body Assembly             |
|        | Fig. 4 Rear Winch                |
|        | Fig. 5 Rear Roller               |
|        | Fig. 6 Tool Box                  |
|        | Fig. 7 Tire Rack                 |
|        | Fig. 8 Floodlamp                 |
|        | Fig. 9 Service Clearance Light   |
|        | Fig. 10 Blackout Clearance Light |
|        | Fig. 11 Electrical System        |
|        | Fig. 12 Reflector                |

PART 1

DESCRIPTION AND DATA

Sect. 1 DESCRIPTION

The bridge equipment body is of steel construction, has a permanent bulkhead in front and is equipped with three removable stake racks on each side. On the bulkhead are two adjustable floodlamps for use in night operations. A snatch block is mounted in the opening in the center of the bulkhead. Handles and steps are provided on the bulkhead and a pioneer tool kit is mounted on the right side of the bulkhead. A name plate and transportation data plate are located on the left side of the body on the lower part of the bulkhead.

The stake racks are locked in position by a hand lever and shaft arrangement.

Service and blackout clearance lights and reflectors are provided at the front and rear of the body on each side. All lights operate on 24V electricity taken from the truck wiring system.

Two hand-operated winches are provided on each side of the body and two similar winches at the rear of the body. All winches are provided with steel cables equipped with hooks and partial cable covers.

A roller assembly is mounted at the rear of the body to aid in loading and unloading.

Sect. 2 GENERAL DATA

|                                 |                       |
|---------------------------------|-----------------------|
| Length inside - 219"            | Length overall - 236" |
| Width inside - 98"              | Width overall - 115"  |
| Max. payload cap. - 10,000 lbs. | Height overall - 70"  |

IDENTIFICATION

|                     |                        |
|---------------------|------------------------|
| SNL 78-9336.220-300 | Hobbs Mod. No. - F1407 |
|---------------------|------------------------|

Sect. 3 ACCESSORIES

F1407-7-10 Removable Winch Handles - 2 ea.  
F1407-13 Ladders - 2 ea.  
Pioneer Tool Kit - 1 ea.  
Tire Rack Handle - 1 ea.

PART 2

OPERATION

Sect. 1 LIGHTS

The lights are controlled by switches provided on the truck. The floodlamp supports on the bulkhead are adjusted by means of handle bolts on the supports. The elevation of the support pipes is adjusted by means of the lower bolts. The lamps are adjusted for direction by means of the upper bolts.

Sect. 2 LADDERS

Ladders are stored in the ladder compartment in the rear of the body when not in use and the door of the compartment should be firmly latched and locked with the snap lock provided. In use, the ladders are hooked on the ladder stays on the rear of the body (see Fig. 3, Item 15).

Sect. 3 WINCHES

The removable handle is inserted in the end of the ratchet lever and given a half-turn to lock it in place. The handle is pulled outward to clear the teeth on the ratchet wheel, pushed inward to tighten the winch cable. At the end of the inward stroke the pawl will lock the ratchet wheel in place and maintain the tension on the cable. To loosen the cable, push inward enough to free the pawl from tension and hold the pawl (against the spring tension) out of

the way of the ratchet. Be cautious in releasing the initial tension on the cable. The removable handles are kept in the tool box when not in use. When the winches are not in use the cable hooks of the side winches are placed over the winch hook pins (at each end of the side rail gutter) and the winch is tightened to take slack out of the cables. The cables of the rear winches are looped about the lashing hooks at the rear of the body.

#### Sect. 4 STAKE RACKS

If necessary to remove and replace stake racks, the stakes at the bottom of the racks are lowered into the stake pockets, installing the front racks first. The lock blocks at the ends of the top slats fit together to lock the racks together. The front racks fit into lock blocks welded to the inside face of the front bulkhead.

Each rack assembly is provided with an individual locking system, operated by means of a hand lever under the side rail of the body. Pulling upward on the lever forces a cam-action latch through the sides of the pocket. The lock must be open to install the racks. After installing the racks, pull the lever up to the lock bracket and push the lock pin (attached by a chain near the lock bracket) through the bracket and lever, pinning the lever in place. To unlock and remove racks, reverse this procedure.

#### Sect. 5 TIRE RACK - See Fig. 7

To lower the tire rack, loosen the 3/4" Budd nuts (Item 9) and give the tire (bolted to the pickup member, Item 2) a turn to the left so the Budd nuts will drop through the enlarged holes in the main member (Item 1). This will

be easier if the weight of the tire is picked up slightly by cranking up on the worm shaft (Item 3) with the tire rack wrench. After freeing the tire and pickup member from the tire rack, the tire can be lowered to the ground with the crank. To install a tire on the rack, reverse this procedure.

### PART 3

#### MAINTENANCE

##### Sect. 1 LUBRICATION

- A. The rear roller assembly is equipped with a standard lubrication fitting at each end and should be lubricated monthly, or more often under severe use.
- B. The roller bolts on the rear winches are also equipped with lubrication fittings and should be lubricated monthly or more often if necessary.
- C. The following items should be oiled with engine oil often enough to prevent rust and insure smooth operation:
  - 1. Bolt handles on floodlamps - oil threads.
  - 2. Ladder compartment door and tool box door hinges.
  - 3. Ladder compartment door and tool box door latches.
  - 4. Snatch block turnbuckle - oil threads.
  - 5. Stake rack locking system - oil arm, lever and latch arrangement (see Fig. 2).
  - 6. Winch shafts.
  - 7. Tire rack gears and bearings.

##### Sect. 2 ELECTRIC SYSTEM

The following chart shows possible electrical system troubles, their probable causes and recommended remedy.



LIGHTS WILL NOT BURN

| <u>Probable Cause</u>               | <u>Remedy</u>              |
|-------------------------------------|----------------------------|
| Light switch in off position.       | Turn switch on             |
| Battery on truck not fully charged. | Charge or replace battery. |
| Broken wiring harness.              | Splice or repair harness.  |

DIM LIGHTS

| <u>Probable Cause</u>                                    | <u>Remedy</u>              |
|--|----------------------------|
| Battery on truck not fully charged.                      | Charge or replace battery. |
| Dirty or corroded contacts in wiring harness connectors. | Clean contacts.            |
| Damaged wires in harness.                                | Repair.                    |

ONE OR MORE LIGHTS WILL NOT BURN

| <u>Probable Cause</u>            | <u>Remedy</u>             |
|----------------------------------|---------------------------|
| Burned out bulb.                 | Replace bulb.             |
| Single wire broken.              | Splice broken connection. |
| Bulb contacts dirty or corroded. | Clean contacts.           |

Figure 11 shows wiring diagram and location of electrical components. See also Fig. 8, 9 & 10.

Fig. 1

Body Assembly

| <u>Item</u> | <u>Part No.</u> | <u>Description</u>         | <u>No. Req.</u> |
|-------------|-----------------|----------------------------|-----------------|
| 1           | F1407-3D        | Assembly, Snatch Block     | 1               |
| 2           | F1407-6         | Assembly, Floodlamp        | 2               |
| 3           | F1407-1         | Assembly, Stake Rack       | 6               |
| 4           | F1407-11-3      | Rack, Tire                 | 1               |
| 5           |                 | Lock Blocks, Stake Rack    | -               |
| 6           | F1407-1-11      | Ring, Lashing              | 8               |
| 7           | F1407-64        | Data Plate, Transportation | 1               |
| 8           | F1407-63        | Plate, Name                | 1               |
| 9           | F1407-47        | Fender, Splash             | 4               |
| 10          | F1407-50        | Brace, Splash Fender       | 8               |

FIG. 1  
BODY ASSEMBLY

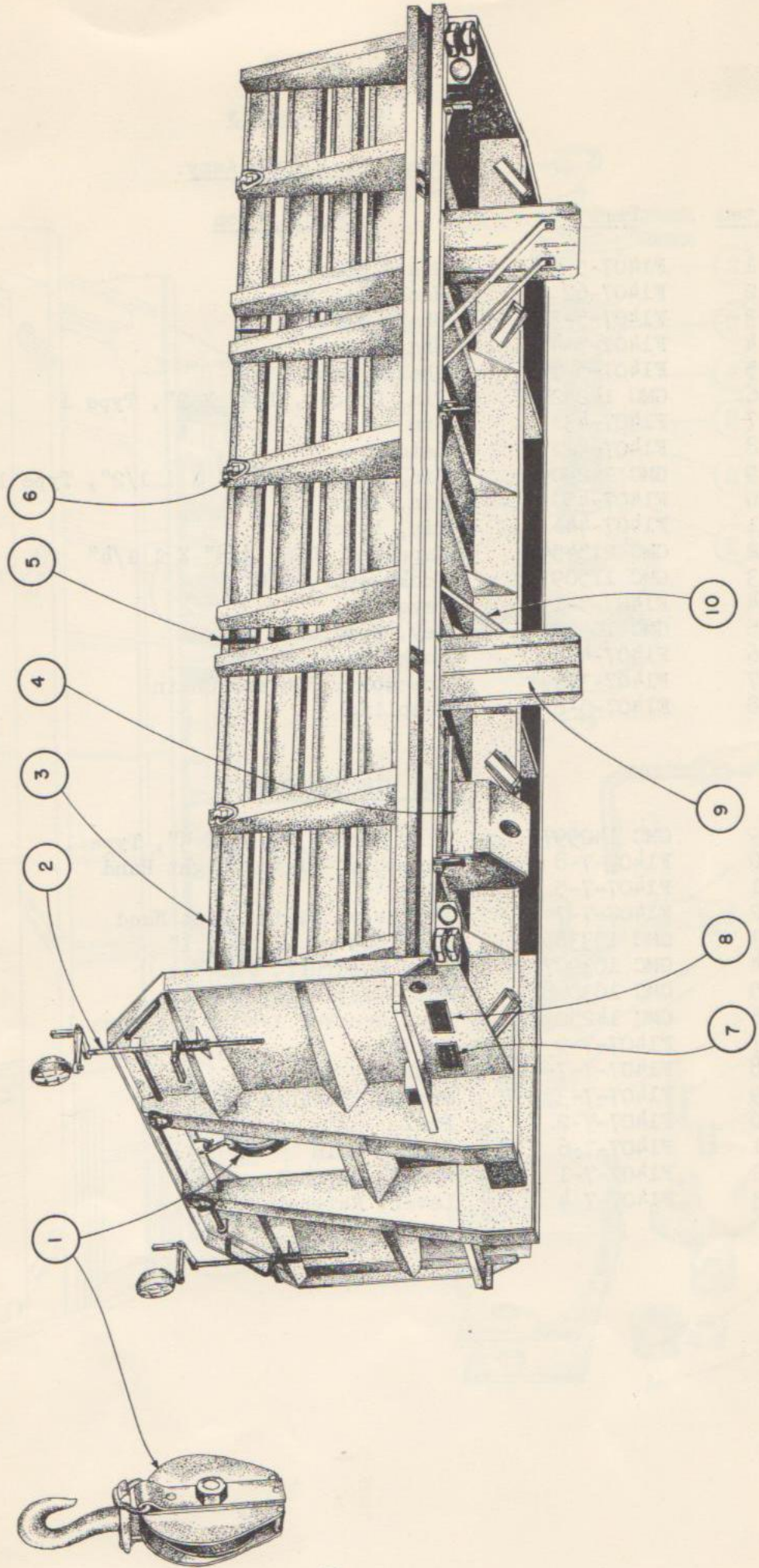


Fig. 2

Body AssemblyStake Rack Lock Assy.

| <u>Item</u> | <u>Part No.</u> | <u>Description</u>                  | <u>No. Req.</u> |
|-------------|-----------------|-------------------------------------|-----------------|
| 1           | F1407-5-2       | Shaft, Lock                         | 4               |
| 2           | F1407-62        | Hook, Lashing                       | 18              |
| 3           | F1407-5-3       | Shaft, Lock                         | 8               |
| 4           | F1407-5-4       | Shaft, Lock                         | 4               |
| 5           | F1407-5-5       | Shaft, Lock                         | 2               |
| 6           | GMC 142523      | Pin, Groove, 1/4" X 2", Type 1      | 42              |
| 7           | F1407-43        | Arm                                 | 18              |
| 8           | F1407-42        | Latch                               | 18              |
| 9           | GMC 142509      | Pin, Groove, 3/16" X 1 1/2", Type 1 | 18              |
| 10          | F1407-45        | Pin, Arm                            | 18              |
| 11          | F1407-44        | Pin, Latch                          | 18              |
| 12          | GMC 215454      | Capscrew, USS, 3/8" X 1 1/4"        | 6               |
| 13          | GMC 115093      | Lockwasher, 3/8"                    | 6               |
| 14          | F1407-5-1       | Lever                               | 6               |
| 15          | GMC 103907      | Key, Woodruff, #11                  | 6               |
| 16          | F1407-41        | Lock, Lever Hanger                  | 6               |
| 17          | F1407-39A       | Assembly, Pin and Chain             | 6               |
| 18          | F1407-5-6       | Coupling                            | 12              |

SIDE WINCH ASSEMBLY

|    |             |                                |   |
|----|-------------|--------------------------------|---|
| 19 | GMC 142997  | Pin, Groove, 3/8" X 3", Type 1 | 1 |
| 20 | F1407-7-8   | Assembly, Plate, Right Hand    | 1 |
| 21 | F1407-7-5   | Drum                           | 1 |
| 22 | F1407-7-7   | Assembly, Plate, Left Hand     | 1 |
| 23 | GMC 103385  | Pin, Cotter, 1/8" X 1"         | 1 |
| 24 | GMC 103907  | Key, Woodruff, #11             | 1 |
| 25 | GMC 103028  | Nut, Castle, 1/2" SAE          | 1 |
| 26 | GMC 142523  | Pin, Groove, 1/4" X 2", Type 1 | 1 |
| 27 | F1407-7-9   | Collar                         | 1 |
| 28 | F1407-7-7-4 | Bushing                        | 2 |
| 29 | F1407-7-3   | Spring, Ratchet                | 1 |
| 30 | F1407-7-2   | Pawl                           | 1 |
| 31 | F1407-7-6   | Shaft, Main                    | 1 |
| 32 | F1407-7-1   | Wheel, Ratchet                 | 1 |
| 33 | F1407-7-4   | Lever, Ratchet                 | 1 |

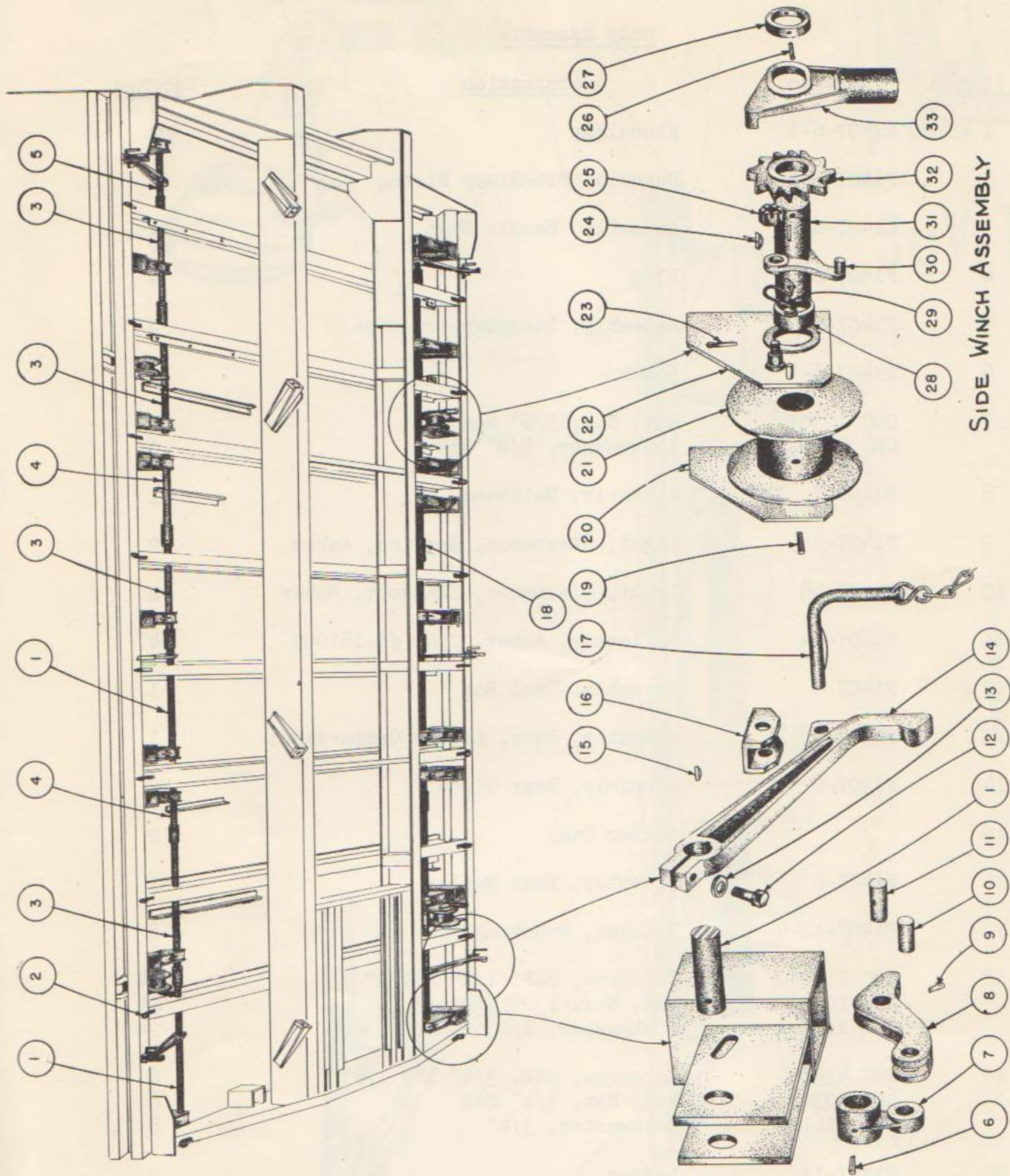


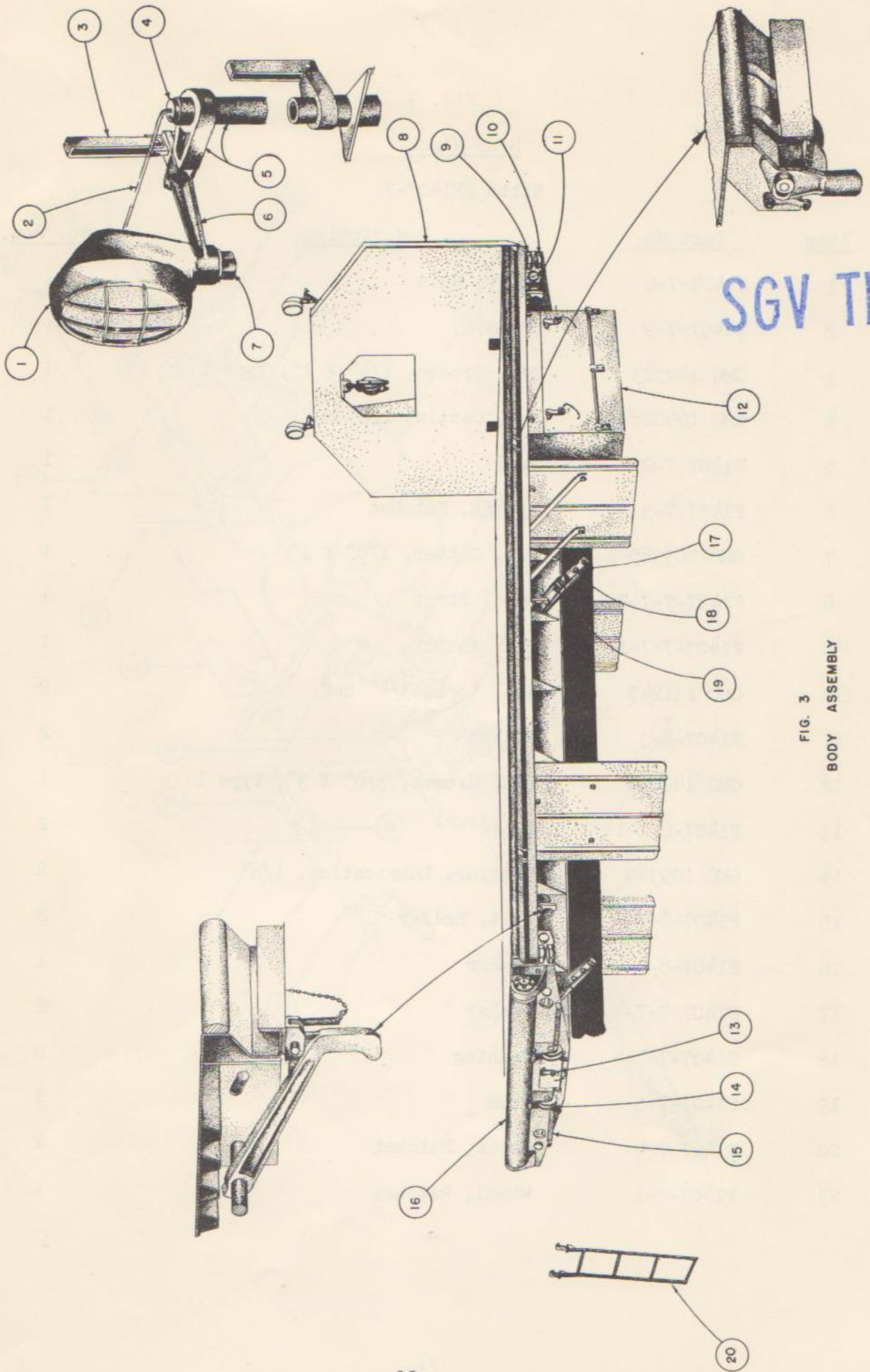
FIG. 2  
BODY ASSEMBLY

STAKE POCKET AND STAKE RACK  
LOCK ASSEMBLY

Fig. 3

Body Assembly

| <u>Item</u> | <u>Part No.</u>                        | <u>Description</u>   | <u>No. Req.</u> |
|-------------|--|--|-----------------|
| 1           | F1407-6-2                              | Floodlamp  | 2               |
| 2           | F1407-6-5                              | Harness, Floodlamp Wiring  | 1               |
| 3           | F1407-6-9                              | Assembly, Handle Bolt  | 4               |
| 4           | F1407-6-6                              | Plug   | 4               |
| 5           | F1407-6A                               | Assembly, Lamp Support Pipe  | 2               |
| 6           | F1407-6-3                              | Lever  | 2               |
| 7           | GMC 103030<br>GMC 116123               | Nut, Hex, 5/8" SAE<br>Lockwasher, 5/8" SAE                             | 2<br>2          |
| 8           | F1407-3                                | Assembly, Bulkhead   | 1               |
| 9           | F1407-56                               | Light, Clearance, Service, Amber                                       | 2               |
| 10          | F1407-58                               | Light, Clearance, Blackout, Amber                                      | 2               |
| 11          | F1407-54                               | Reflector, Amber, Ord. #B-161059                                       | 4               |
| 12          | F1407-4                                | Assembly, Tool Box   | 1               |
| 13          | F1407-65                               | Assembly, Door, Ladder Compartment                                     | 1               |
| 14          | F1407-8                                | Assembly, Rear Winch   | 2               |
| 15          |  | Ladder Stay  | 2               |
| 16          | F1407-2                                | Assembly, Tear Roller  | 1               |
| 17          | F1407-12-4                             | Bracket, Mounting  | 8               |
| 18          | GMC 215740<br>GMC 103028<br>GMC 116121 | Capscrew, SAE, 1/2" X 1/2"<br>Nut, Hex, 1/2" SAE<br>Lockwasher, 1/2"   | 24<br>24<br>24  |
| 19          | GMC 434826<br>GMC 103031<br>GMC 116124 | Capscrew, SAE, 3/4" X 3 1/2"<br>Nut, Hex, 3/4" SAE<br>Lockwasher, 3/4" | 8<br>8<br>8     |
| 20          | F1407-13                               | Ladder   | 2               |



SGV TD

FIG. 3  
BODY ASSEMBLY

## Fig. 4

Rear Winch

Hobbs #F1407-7

| <u>Item</u> | <u>Part No.</u> | <u>Description</u>             | <u>No. Req.</u> |
|-------------|-----------------|--------------------------------|-----------------|
| 1           | F1407-7-6       | Shaft, Main                    | 1               |
| 2           | F1407-7-9       | Collar                         | 1               |
| 3           | GMC 142523      | Pin, Groove, 1/4" X 2", Type 1 | 1               |
| 4           | GMC 103028      | Nut, Castle, 1/2" SAE          | 1               |
| 5           | F1407-7-2       | Pawl                           | 1               |
| 6           | F1407-7-3       | Spring, Ratchet                | 1               |
| 7           | GMC 103385      | Pin, Cotter, 1/8" X 1"         | 1               |
| 8           | F1407-7-7-2     | Bolt, Pivot                    | 1               |
| 9           | F1407-7-7-1     | Pin, Anchor                    | 1               |
| 10          | GMC 131247      | Nut, Lock, 3/4" SAE            | 2               |
| 11          | F1407-8-3       | Roller                         | 2               |
| 12          | GMC 142997      | Pin, Groove, 3/8" X 3", Type 1 | 1               |
| 13          | F1407-8-1-1     | Plate                          | 2               |
| 14          | GMC 109349      | Fitting, Lubrication, 1/8"     | 2               |
| 15          | F1407-8-4       | Bolt, Roller                   | 2               |
| 16          | F1407-8-5       | Spacer                         | 1               |
| 17          | F1407-7-7-3     | Washer                         | 2               |
| 18          | F1407-7-7-4     | Bushing                        | 2               |
| 19          | F1407-7-5       | Drum                           | 1               |
| 20          | F1407-7-4       | Lever, Ratchet                 | 1               |
| 21          | F1407-7-1       | Wheel, Ratchet                 | 1               |



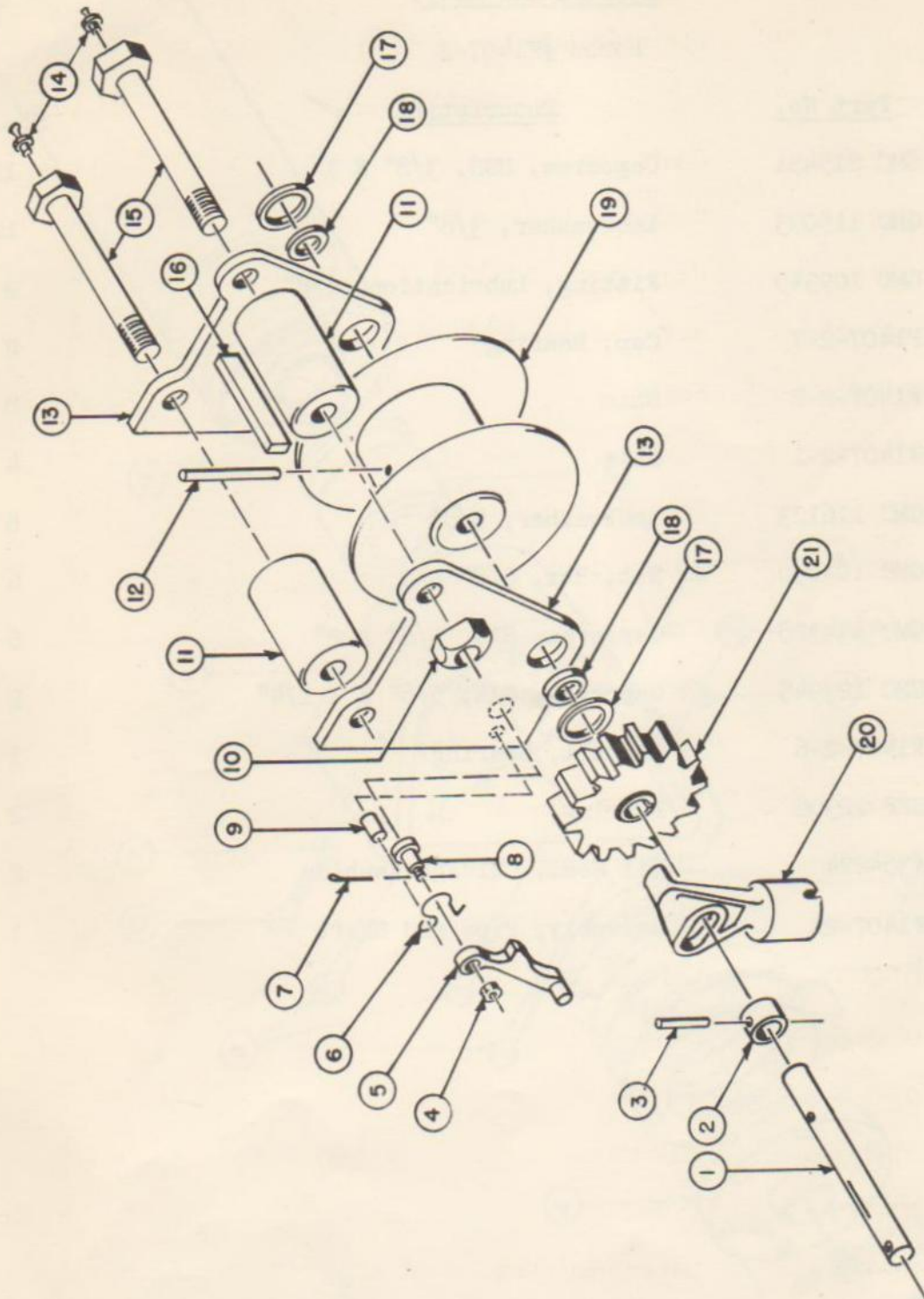


FIG. 4  
REAR WINCH

Fig. 5

Rear Roller Assy.

Hobbs #F1407-2

| <u>Item</u> | <u>Part No.</u> | <u>Description</u>           | <u>No. Req.</u> |
|-------------|-----------------|------------------------------|-----------------|
| 1           | GMC 215451      | Capscrew, USS, 3/8" X 1"     | 12              |
| 2           | GMC 115093      | Lockwasher, 3/8"             | 12              |
| 3           | GMC 109349      | Fitting, Lubrication, 1/8"   | 2               |
| 4           | F1407-2-7       | Cap, Bearing                 | 2               |
| 5           | F1407-2-2       | Shim                         | 8               |
| 6           | F1407-2-1       | Shim                         | 4               |
| 7           | GMC 116123      | Lockwasher, 5/8"             | 8               |
| 8           | GMC 103030      | Nut, Hex, 5/8" SAE           | 6               |
| 9           | GMC 434328      | Capscrew, SAE, 5/8" X 2"     | 6               |
| 10          | GMC 123945      | Capscrew, SAE, 5/8" X 1 1/4" | 2               |
| 11          | F1407-2-6       | Support, Bearing             | 1 pr.           |
| 12          | SKF 22308       | Bearing                      | 2               |
| 13          | #354224         | Oil Seal, Chicago Rawhide    | 2               |
| 14          | F1407-2A        | Assembly, Pipe and Shaft     | 1               |

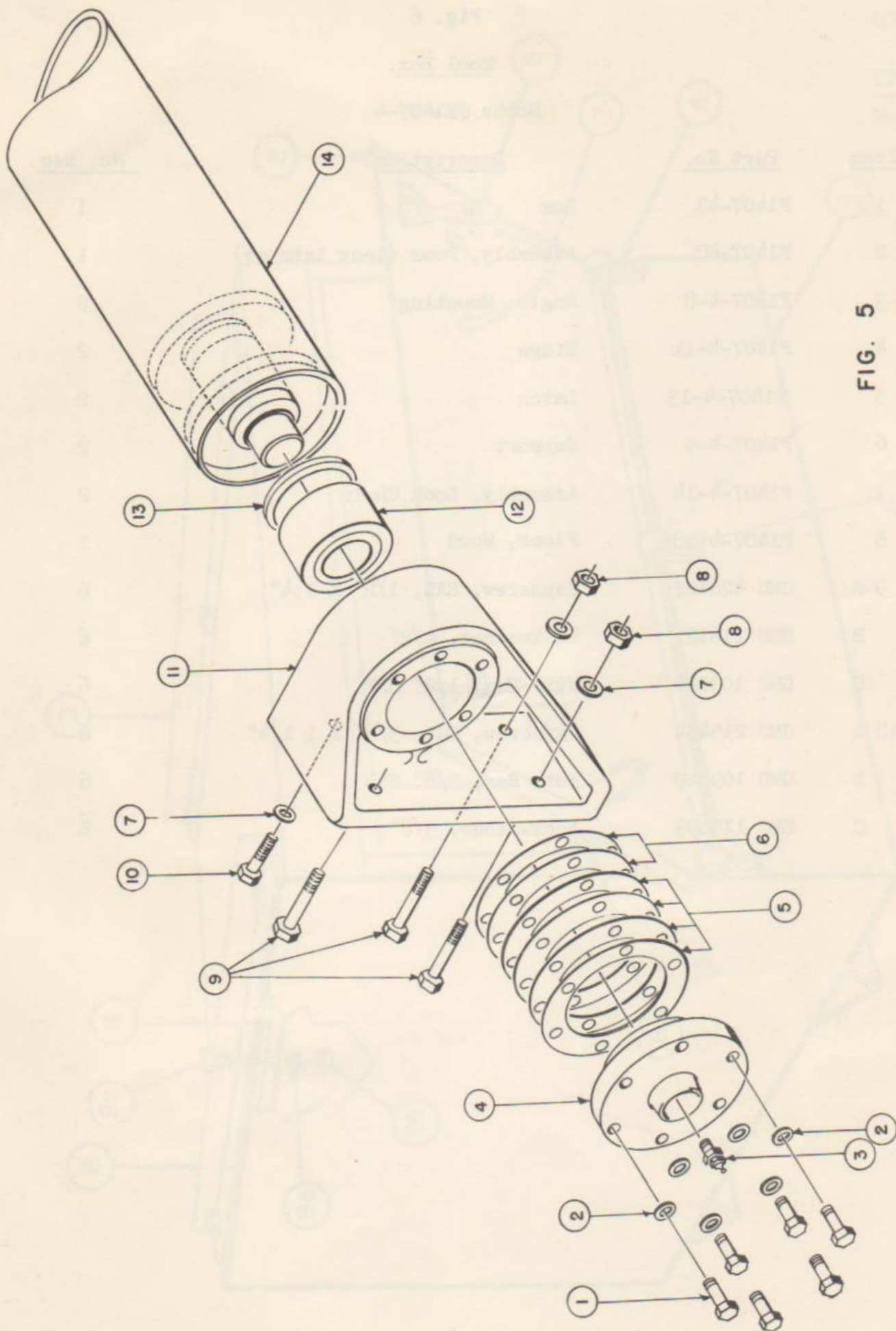


FIG. 5  
REAR ROLLER

Fig. 6

Tool Box

Hobbs #F1407-4

| <u>Item</u> | <u>Part No.</u> | <u>Description</u>            | <u>No. Req.</u> |
|-------------|-----------------|-------------------------------|-----------------|
| 1           | F1407-4B        | Box                           | 1               |
| 2           | F1407-4C        | Assembly, Door (less latches) | 1               |
| 3           | F1407-4-8       | Angle, Mounting               | 2               |
| 4           | F1407-4-11      | Hinge                         | 2               |
| 5           | F1407-4-13      | Latch                         | 2               |
| 6           | F1407-4-9       | Support                       | 2               |
| 7           | F1407-4-14      | Assembly, Lock Chain          | 2               |
| 8           | F1407-4-18      | Floor, Wood                   | 1               |
| 9 A         | GMC 428122      | Capscrew, SAE, 1/2" X 1.4"    | 6               |
| B           | GMC 116121      | Lockwasher, 1/2"              | 6               |
| C           | GMC 103028      | Nut, Hex, 1/2" SAE            | 6               |
| 10 A        | GMC 215454      | Capscrew, SAE, 3/8" X 1 1/4"  | 6               |
| B           | GMC 109349      | Nut, Hex, 3/8" SAE            | 6               |
| C           | GMC 115093      | Lockwasher, 3/8"              | 6               |

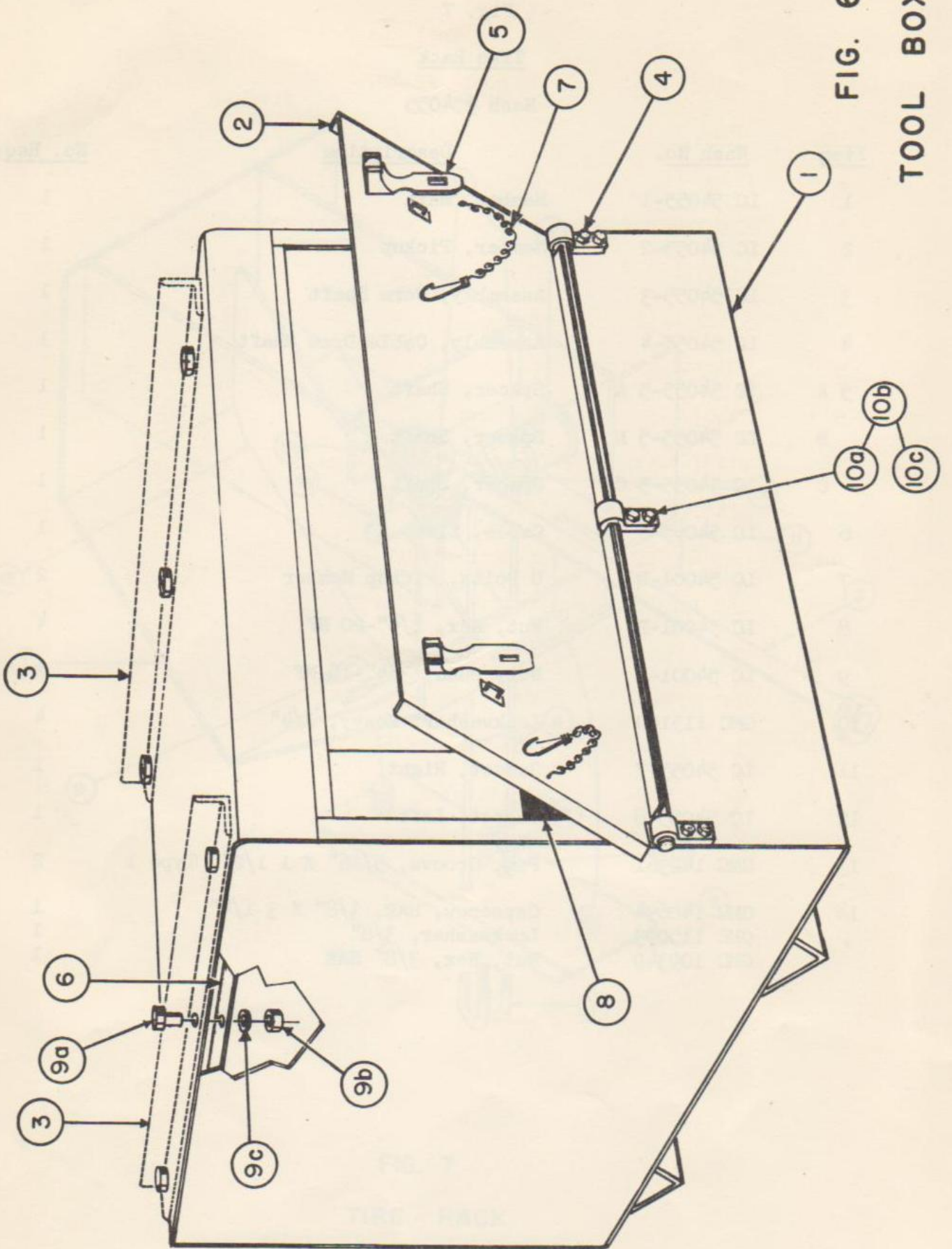


FIG. 6

TOOL BOX

Fig. 7

Tire Rack

Nash #54055

| <u>Item</u> | <u>Nash No.</u> | <u>Description</u>                  | <u>No. Req.</u> |
|-------------|-----------------|-------------------------------------|-----------------|
| 1           | LC 54055-1      | Member, Main                        | 1               |
| 2           | LC 54055-2      | Member, Pickup                      | 1               |
| 3           | LC 54055-3      | Assembly, Worm Shaft                | 1               |
| 4           | LC 54055-4      | Assembly, Cable Drum Shaft          | 1               |
| 5 A         | LC 54055-5 A    | Spacer, Shaft                       | 1               |
| B           | LC 54055-5 B    | Spacer, Shaft                       | 1               |
| C           | LC 54055-5 C    | Spacer, Shaft                       | 1               |
| 6           | LC 54055-6      | Cable, Lift                         | 1               |
| 7           | LC 54001-D      | U Bolts, Pickup Member              | 2               |
| 8           | LC 54001-D      | Nut, Hex, 1/4"-20 NF                | 4               |
| 9           | LC 54001-E      | Nut, Budd, 3/4"-16 NF               | 2               |
| 10          | GMC 115109      | Lockwasher, Heavy, 1/4"             | 4               |
| 11          | LC 54055-7      | Gusset, Right                       | 1               |
| 12          | LC 54055-8      | Gusset, Left                        | 1               |
| 13          | GMC 142361      | Pin, Groove, 5/16" X 1 1/2", Type 1 | 2               |
| 14          | GMC 140694      | Capscrew, SAE, 3/8" X 3 1/4"        | 1               |
| ,           | GMC 115093      | Lockwasher, 3/8"                    | 1               |
|             | GMC 109349      | Nut, Hex, 3/8" SAE                  | 1               |

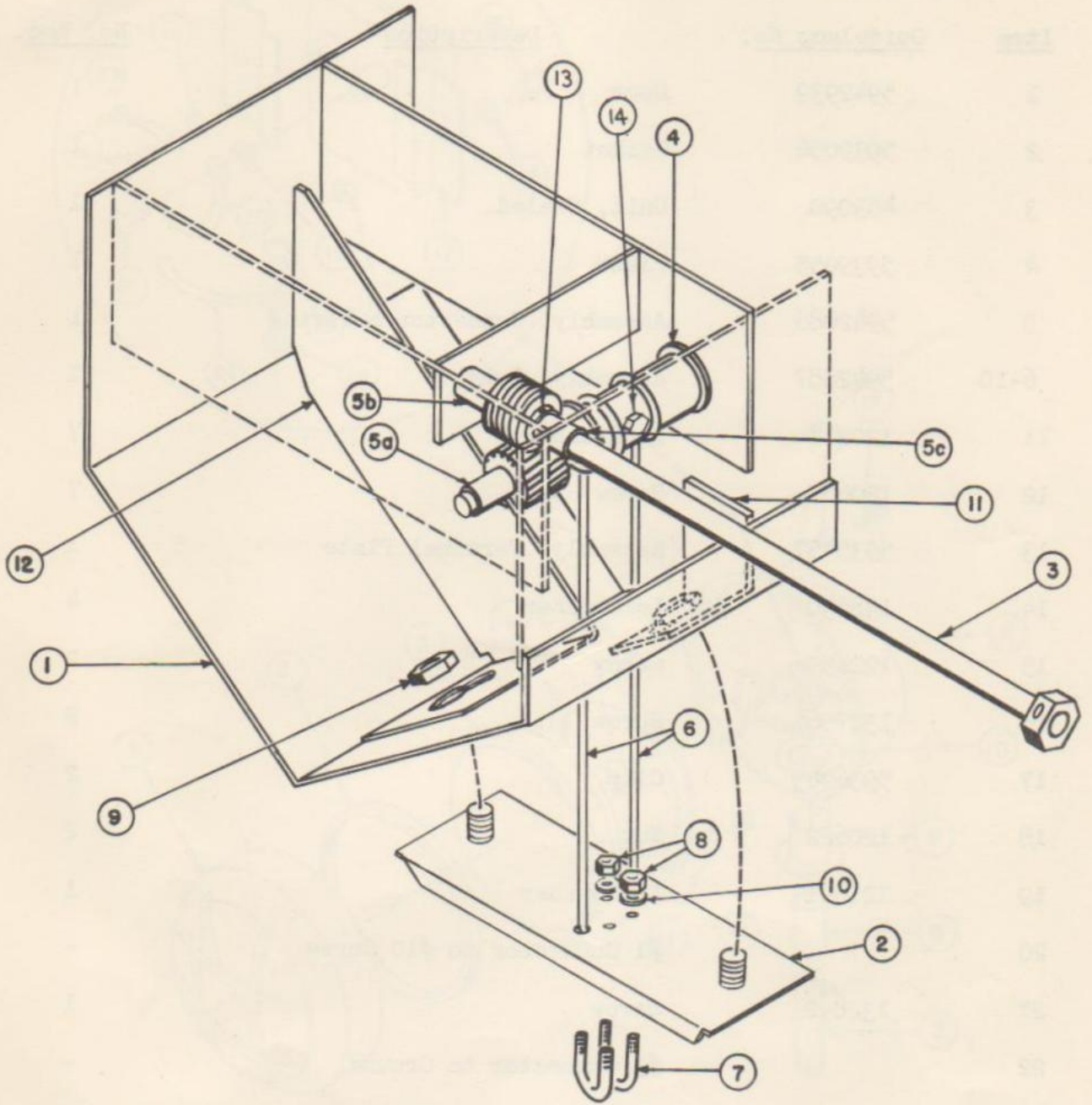


FIG. 7  
TIRE RACK

Fig. 8

Floodlamp Assy.

Guidelamp #926264

| <u>Item</u> | <u>Guidelamp No.</u> | <u>Description</u>           | <u>No. Req.</u> |
|-------------|----------------------|------------------------------|-----------------|
| 1           | 5942939              | Door                         | 1               |
| 2           | 5939056              | Gasket                       | 1               |
| 3           | 453090               | Unit, Sealed                 | 1               |
| 4           | 5939055              | Plate                        | 1               |
| 5           | 5942886              | Assembly, Connector & Wiring | 1               |
| 6-10        | 5942887              | Assembly, Body               | 1               |
| 11          | 120217               | Lockwasher                   | 7               |
| 12          | 120687               | Screw                        | 7               |
| 13          | 5935457              | Assembly, Terminal Plate     | 1               |
| 14          | 138530               | Lockwasher                   | 4               |
| 15          | 122159               | Screw                        | 2               |
| 16          | 132756               | Screw                        | 2               |
| 17          | 5936043              | Clip                         | 2               |
| 18          | 120622               | Nut                          | 2               |
| 19          | 121801               | Lockwasher                   | 1               |
| 20          |                      | #1 Connector to #10 Screw    | -               |
| 21          | 132892               | Screw                        | 1               |
| 22          |                      | #3 Connector to Ground       | -               |
| 23          |                      | #2 Connector to #8 Screw     | -               |



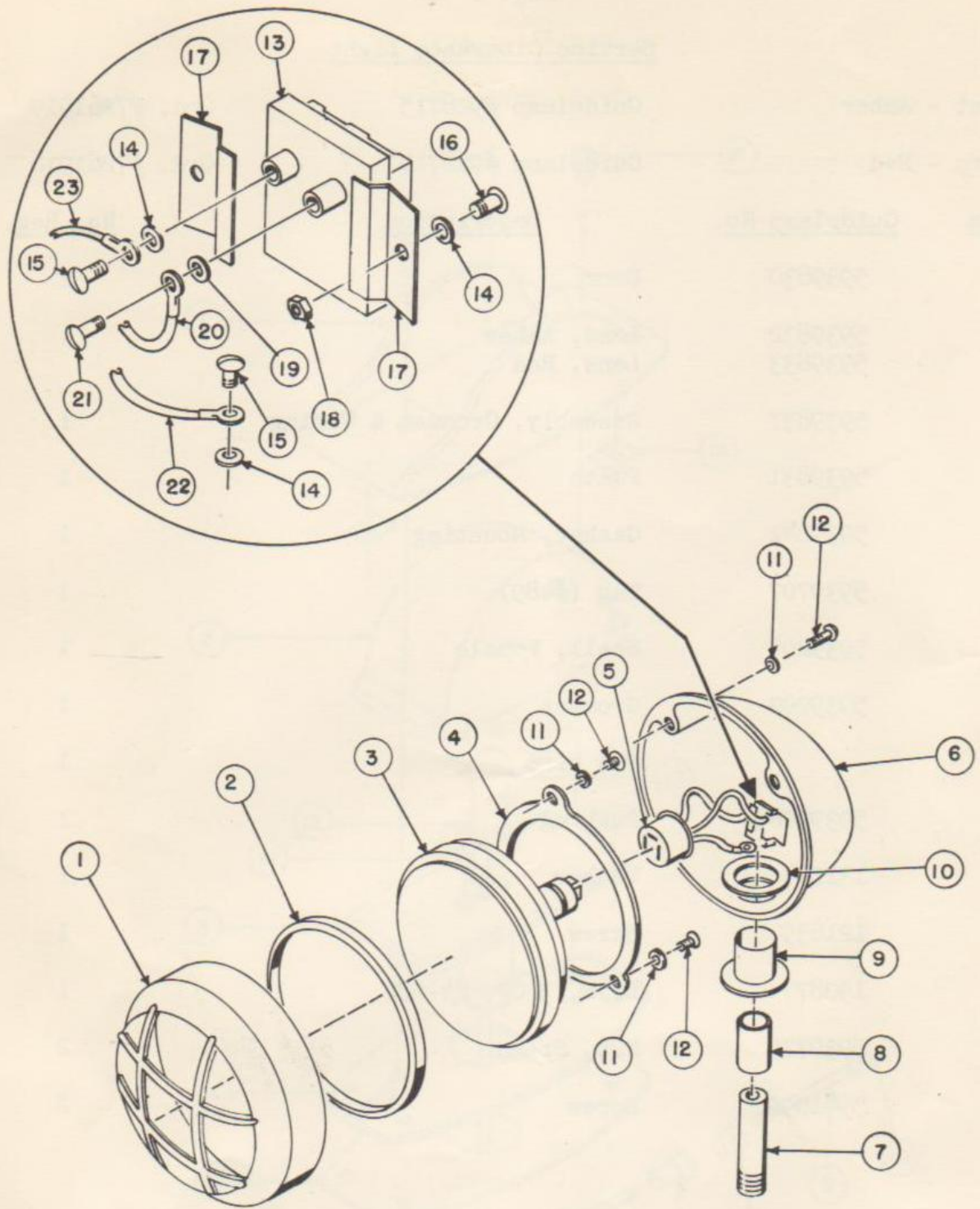


FIG. 8  
FLOODLAMP

Fig. 9

Service Clearance Light

Front - Amber                      Guidelamp #928715                      Ord. #7261919  
 Rear - Red                              Guidelamp #928717                      Ord. #7261916

| <u>Item</u> | <u>Guidelamp No.</u> | <u>Description</u>         | <u>No. Req.</u> |
|-------------|----------------------|----------------------------|-----------------|
| 1           | 5939830              | Door                       | 1               |
| 2           | 5939832<br>5939833   | Lens, Amber<br>Lens, Red   | 1               |
| 3           | 5939837              | Assembly, Grommet & Wiring | 1               |
| 4           | 5939831              | Plate                      | 1               |
| 5           | 5939841              | Gasket, Mounting           | 1               |
| 6           | 5939707              | Tag (#489)                 | 1               |
| 7           | 5939205              | Shell, Female              | 1               |
| 8           | 5939202              | Grommet                    | 1               |
| 9           |                      | #14 Wire                   | 1               |
| 10          | 5939206              | Bushing                    | 1               |
| 11          | 131014               | Washer                     | 1               |
| 12          | 121839               | Screw                      | 1               |
| 13          | 190877               | Bulb, 3 CP, 24-28V         | 1               |
| 14          | 5939775              | Nut, Speed                 | 2               |
| 15          | 5941090              | Screw                      | 2               |

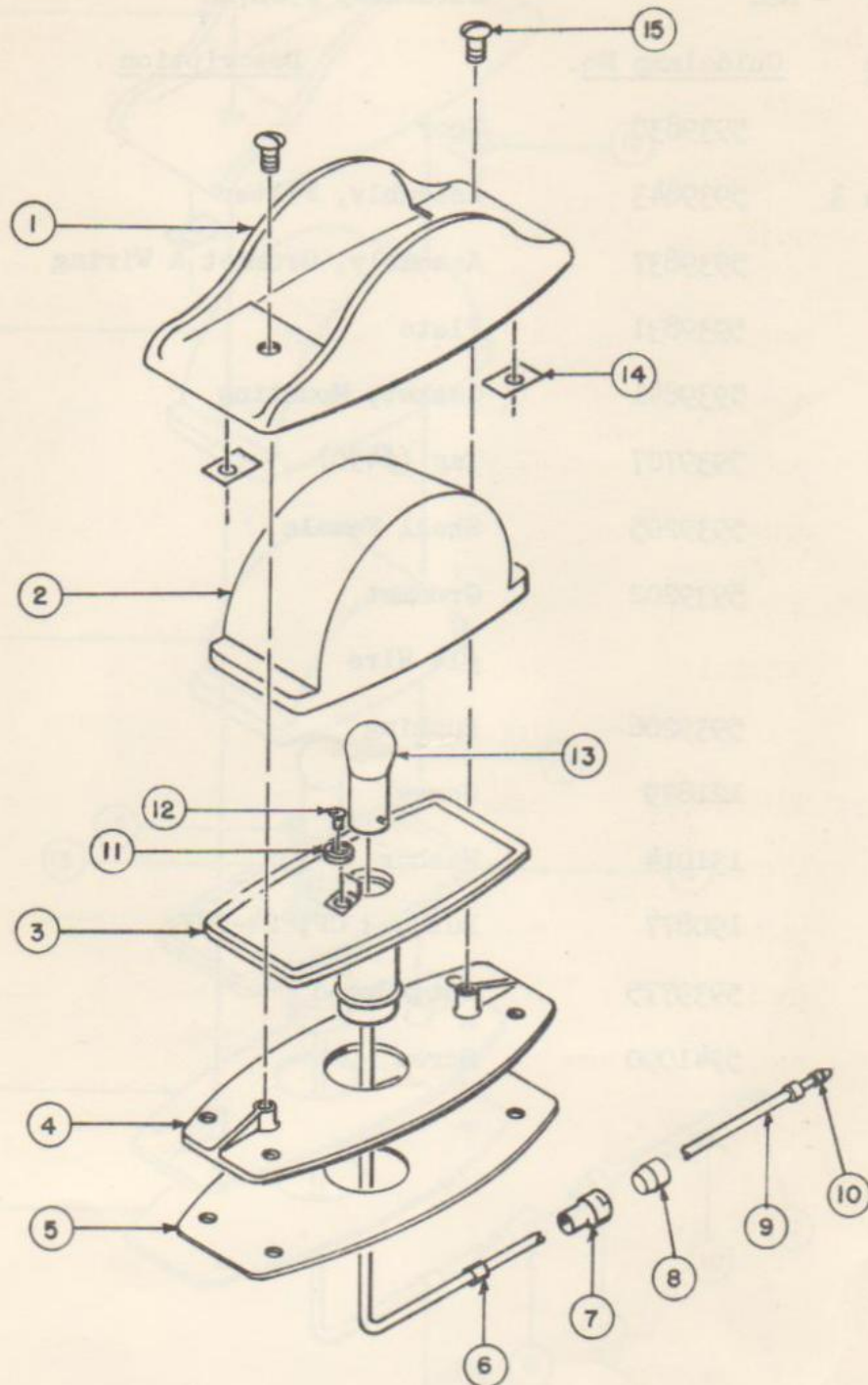


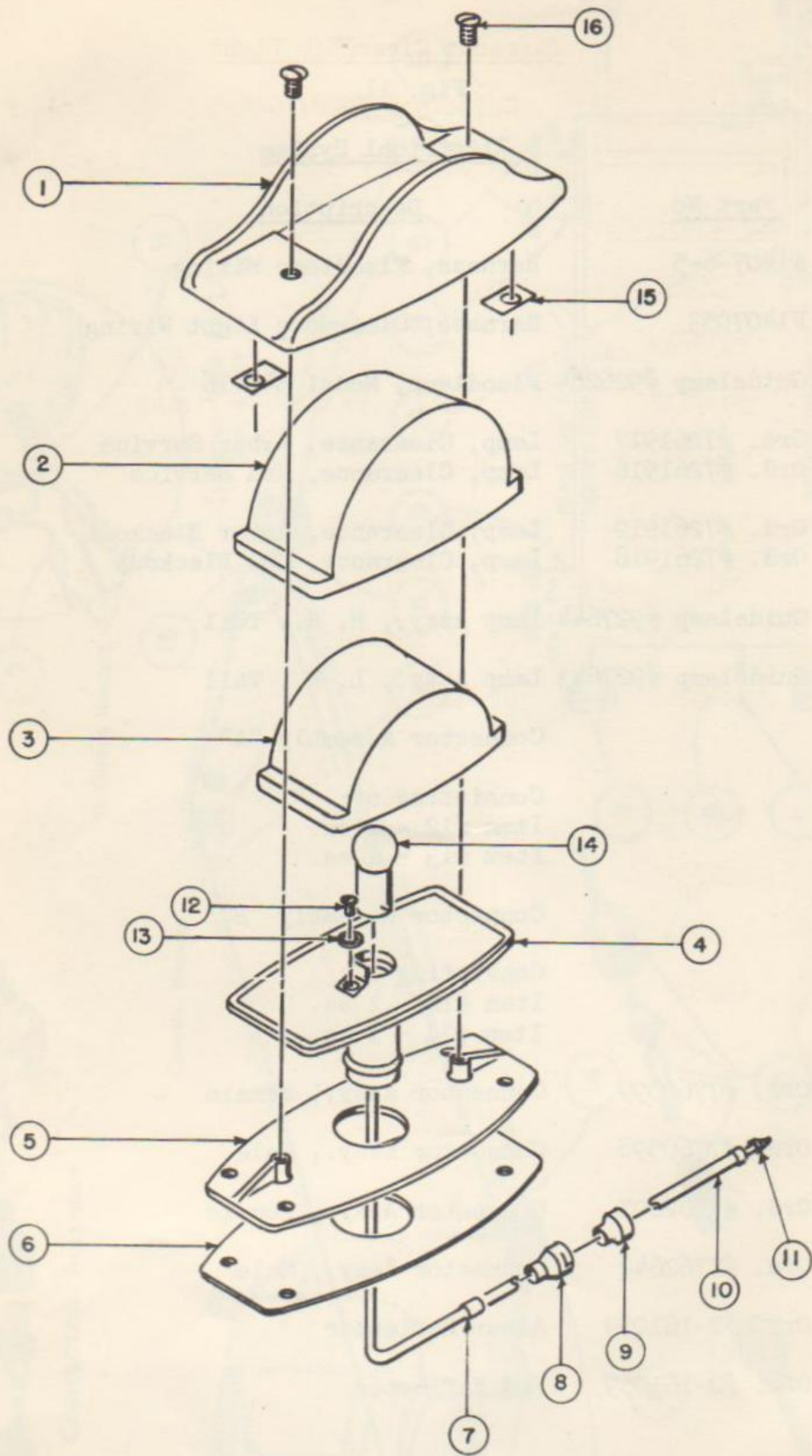
FIG. 9  
SERVICE CLEARANCE LIGHT

Fig. 10

Blackout Clearance Light

Front - Amber                      Guidelamp #928716                      Ord. #726917  
 Rear - Red                              Guidelamp #928718                      Ord. #726918

| <u>Item</u> | <u>Guidelamp No.</u> | <u>Description</u>         | <u>No. Req.</u> |
|-------------|----------------------|----------------------------|-----------------|
| 1           | 5939830              | Door                       | 1               |
| 2 & 3       | 5939843              | Assembly, Filter           | 1               |
| 4           | 5939837              | Assembly, Grommet & Wiring | 1               |
| 5           | 5939831              | Plate                      | 1               |
| 6           | 5939841              | Gasket, Mounting           | 1               |
| 7           | 5939707              | Tag (#490)                 | 1               |
| 8           | 5939205              | Shell Female               | 1               |
| 9           | 5939202              | Grommet                    | 1               |
| 10          |                      | #14 Wire                   | 1               |
| 11          | 5939206              | Bushing                    | 1               |
| 12          | 121839               | Screw                      | 1               |
| 13          | 131014               | Washer                     | 1               |
| 14          | 190877               | Bulb, 3 CP, 24-28V         | 1               |
| 15          | 5939775              | Nut, Speed                 | 2               |
| 16          | 5941090              | Screw                      | 2               |



**FIG. 10**  
**BLACKOUT CLEARANCE LIGHTS**

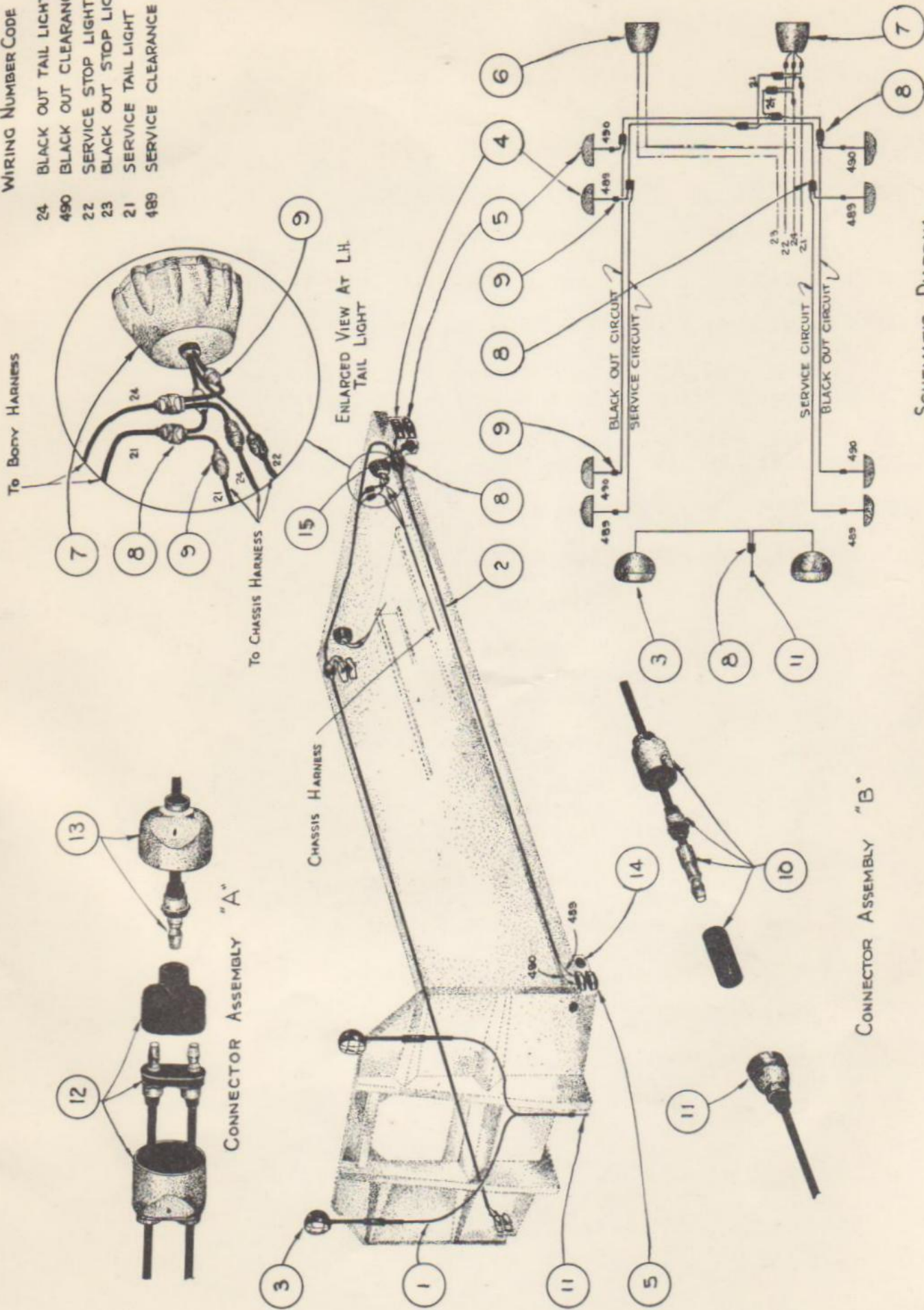
Fig. 11

Electrical System

| <u>Item</u> | <u>Part No.</u>   | <u>Description</u>                                     | <u>No. Req.</u> |
|-------------|-------------------|--|-----------------|
| 1           | F1407-6-5         | Harness, Floodlamp Wiring                              | 1               |
| 2           | F1407053          | Harness, Clearance Light Wiring                        | 1               |
| 3           | Guidelamp #926264 | Floodlamp, Model 549-16                                | 2               |
| 4           | Ord. #7261917     | Lamp, Clearance, Amber Service                         | 2               |
|             | Ord. #7261916     | Lamp, Clearance, Red Service                           | 2               |
| 5           | Ord. #7261919     | Lamp, Clearance, Amber Blackout                        | 2               |
|             | Ord. #7261918     | Lamp, Clearance, Red Blackout                          | 2               |
| 6           | Guidelamp #927644 | Lamp Assy., R. H., Tail                                | 1               |
| 7           | Guidelamp #927643 | Lamp Assy., L. H., Tail                                | 1               |
| 8           |                   | Connector Assembly "A"                                 | 9               |
|             |                   | Consisting of:<br>Item #12 - 1 ea.<br>Item #13 - 1 ea. |                 |
| 999         |                   | Connector Assembly "B"                                 | 14              |
|             |                   | Consisting of:<br>Item #10 - 1 ea.<br>Item #11 - 1 ea. |                 |
| 10          | Ord. #7760599     | Connector Assy., Female                                | -               |
| 11          | Ord. #7760598     | Connector Assy., Male                                  | -               |
| 12          | Ord. #7762605     | Connector Assy., Female                                | -               |
| 13          | Ord. #7762642     | Connector Assy., Male                                  | -               |
| 14          | Ord. #B-161059    | Amber Reflector  | 4               |
| 15          | Ord. #B-161059    | Red Reflector  | 5               |

WIRING NUMBER CODE

- 24 BLACK OUT TAIL LIGHT
- 490 BLACK OUT CLEARANCE LIGHT
- 22 SERVICE STOP LIGHT
- 23 BLACK OUT STOP LIGHT
- 21 SERVICE TAIL LIGHT
- 489 SERVICE CLEARANCE LIGHT



SCHEMATIC DIAGRAM

WIRING DIAGRAM AND CONNECTORS  
ELECTRICAL SYSTEM  
FIG. 11

CONNECTOR ASSEMBLY "B"

CONNECTOR ASSEMBLY "A"