

+ C1 + C2 + C3

Arch

ARMY SERVICE FORCES CATALOG **ORD 7 SNL G-235**

Organizational Spare
Parts and Equipment

RESTRICTED

ORDNANCE SUPPLY CATALOG

L5-022

Group G

Technical Reference TM 9-801

(Standard Nomenclature List No. G-235)

*Organizational Spare Parts and
Equipment
for*

Truck, 2½-Ton, 6 x 6, Signal Corps Repair, M30

RESTRICTED DISSEMINATION OF RESTRICTED MATTER—No person is entitled solely by virtue of his grade or position to knowledge or possession of classified matter. Such matter is entrusted only to those individuals whose official duties require such knowledge or possession. (See also paragraph 23b, AR 380-5, 15 March 1944.)

This is a list of organizational spare parts and organizational equipment (accessories; tools; and applicable cleaning and preserving materials) which are issued to the using arms or service for its use in performing 1st and 2nd echelon maintenance.

This standard nomenclature list is supplemental to Tables of Organization and Equipment, Tables of Basic Allowances, and Tables of Allowances. It is therefore imperative that it be in the hands of all organizations and establishments concerned. Special attention should be given to its distribution.

Standard Nomenclature Lists are published in three separate pamphlets—

(1) ORD 9 the *LIST OF ALL PARTS* section—This list will be used for **identification and storage purposes only**.

(2) ORD 7 the *ORGANIZATIONAL SPARE PARTS AND EQUIPMENT* section—which lists items issued to organizations issued this materiel.

(3) ORD 8 the *HIGHER ECHELON SPARE PARTS AND EQUIPMENT (ADDENDUM)* section—which lists major items, maintenance parts and equipment available for maintenance of this materiel. (This section is for use of Ordnance personnel only.)

For full information relative to Standard Nomenclature Lists, the procedure followed and the principles employed in their compilation, together with the purposes and uses thereof, see the Introduction (ORD 1 IOC), the Index (ORD 2 OPSI), and the Ordnance Provision System Regulations (OPSR).

Headquarters, Army Service Forces, 11 January 1945

OSA-11-2216 18408°-'56-264

ORD 7 SNL G-235
Organizational Spare
Parts and Equipment

Headquarters, Army Service Forces,
 Washington 25, D. C., 11 January 1945.

Army Service Forces Ordnance Supply Catalog, ORD 7 SNL G-235, Organizational Spare Parts and Equipment for Truck, 2½-Ton, 6 x 6, Signal Corps Repair, M30 has been prepared under the supervision of the Chief of Ordnance, and is published for the information and guidance of all concerned.

[SPX 461 (11 Jan 45)]

By command of Lieutenant General SOMERVELL:

W. D. STYER,
Major General, General Staff Corps,
Chief of Staff.

OFFICIAL:
 J. A. ULIO,
Major General,
The Adjutant General.

CONTENTS

| | Page |
|--|------|
| MAJOR ITEM..... | 2 |
| GENERAL INFORMATION..... | 2 |
| VEHICULAR SPARE PARTS AND EQUIPMENT: | |
| Vehicular Spare Parts..... | 3 |
| Vehicular Accessories..... | 3 |
| Load—Truck, 2½-Ton, 6 x 6, Signal Corps Repair, M30..... | 7 |
| ORGANIZATIONAL SPARE PARTS AND EQUIPMENT: | |
| Organizational Spare Parts for 2½-Ton, 6 x 6, GMC Chassis..... | 18 |
| Organizational Accessories..... | 18 |
| Applicable Cleaning and Preserving Materials..... | 19 |
| NOTES..... | 19 |
| MANUFACTURERS' SYMBOLS..... | 19 |
| USE OF PRICES..... | 19 |
| ILLUSTRATIONS..... | 20 |

MAJOR ITEM

| Note Symbol | | Unit Price |
|-------------|--|-------------|
| φ W | TRUCK, 2½-Ton, 6 x 6, Signal Corps Repair, M30. | See SNL G-1 |

GENERAL INFORMATION

Notice of discrepancies or suggested changes should be directed to Office, Chief of Ordnance, Field Service, Maintenance Division, Military Publications Branch, SPOFM-Pub., Washington 25, D. C.

ARMY SERVICE FORCES CATALOG **ORD 7 SNL G-235** Arch

Organizational Spare
Parts and Equipment
CHANGES No. 1

GEREGISTREERD

25 JULI 1956

J.D.O. RBV

RESTRICTED

ORDNANCE SUPPLY CATALOG

Group G

Technical Reference TM 9-801

*Organizational Spare Parts
and Equipment
for*

**Truck, 2 1/2-Ton, 6 x 6, Signal
Corps Repair, M30**

Headquarters, Army Service Forces,
Washington 25, D. C., 26 February 1945

Army Service Forces Ordnance Supply Catalog, ORD 7 SNL G-235, Organizational Spare Parts and Equipment, Changes No. 1, for Truck, 2 1/2-Ton, 6 x 6, Signal Corps Repair, M30 has been prepared under the supervision of the Chief of Ordnance, and is published for the information and guidance of all concerned.

[SPX 461 (26 Feb 45)]

By command of Lieutenant General SOMERVELL:

W. D. STYER,
Major General, General Staff Corps,
Chief of Staff.

OFFICIAL:

J. A. ULIO,
Major General,
The Adjutant General.

Headquarters, Army Service Forces, 26 February 1945

ORGANIZATIONAL SPARE PARTS AND EQUIPMENT

ORD 7 Standard Nomenclature List No. G-235, Organizational Spare Parts and Equipment, dated 11 January 1945, is changed as follows:

Page 2:

The "GENERAL INFORMATION" paragraph is changed to read:

Notice of discrepancies or suggested changes should be directed to Office, Chief of Ordnance, Field Service, Maintenance Division, Military Publications Branch, SPOFM-Pub., Washington 25, D. C. Ordnance installations will find Classification Codes in ORD 5-2 "Stock List" for Federal Stock Numbers listed herein.
(O.O. 140.2/14313)

Page 4:

Under "VEHICULAR ACCESSORIES (Contd.)," the 1st and 2nd items are changed to read:

| | | | | |
|--------|-------------|----|---------|---|
| K-3 W | 41-A-14-825 | -- | A849744 | ADAPTER, gun, lubricating, hydraulic to push type, thin stem, w/locking sleeve -- 1 |
| J-15 W | 41-B-15 | 7 | -- | GM-2146735 BAG, tool ----- 1 |

(O.O. 140.2/14369)

Page 5:

Under "VEHICULAR ACCESSORIES (Contd.)," the 1st and 2nd items are changed to read:

| | | | | |
|---------|--|----|----|--|
| G-508 W | | -- | -- | KIT, desertizing, transport vehicle ----(Note 2) 1 |
| G-508 W | | -- | -- | KIT, winterizing, transport vehicle --- (Note 2) 1 |

Page 17:

Under "Load - TRUCK, 2 1/2-TON, 6 x 6, SIGNAL CORPS REPAIR, M30 (Contd.):"

CHANGES No. 1

The 2nd item is changed to read:

J-8 W 17-F-1635-50 -- -- FILTER, direct current, 80 v., 100 amp. complete, w/bracket (Sig. Corps Dwg. Nos. SC-D-6966 and SC-D-7014) ----- 2

The 13th item is changed to read:

J-8 W 17-R-12723-200 -- -- ROD, ground, G-P-29 (Sig. Corps Dwg. No. SC-D-7402) ----- 1
(O.O.M. 413/Rar. Ars. (2-1-45))

DISTRIBUTION: AAF (10); AGF (10); ASF (2); S Div ASF (1); AAF Comds (2); Arm & Sv Bd (2); T of Opns (10); Tech Sv (2); SvC (10); PC&S (1) except Air Bases (3); PE, 9 (5); Dist O, 9 (5); Dist Br O, 9 (3); Reg O, 9 (3); Establishments, 9 (5); Decentralized Sub-O, 9 (3); Tk Deps, 9 (5); Gen & Sp Sv Schs (10); USMA (2); A (10); CHQ (10); D (2); AF (5); R 9 (2); Bn 9 (2); C 9 (3).
One (1) copy to each of the following T/O & E's: 1-457T; 11-7; 11-7S; 11-16; 11-47; 11-57; 11-107; 11-127; 11-237; 11-287; 11-317; 11-357; 11-500; Signal Service Organization, Wire & Cable, Wire Rep Sec (GQ); 11-587.

For explanation of symbols, see FM 21-6.

ARMY SERVICE FORCES CATALOG **ORD 7 SNL G-235**

A-ck

Organizational Spare
Parts and Equipment

CHANGES No. 2

RESTRICTED

ORDNANCE SUPPLY CATALOG

Technical Reference TM 9-801

*Organizational Spare Parts and
Equipment*

for

**Truck, 2½-Ton, 6 x 6, Signal
Corps Repair, M30**

Headquarters, Army Service Forces,
Washington 25, D. C., 13 July 1945.

Army Service Forces Ordnance Supply Catalog, ORD 7 SNL G-235, 11 January 1945,
is changed as shown herein.

[SPX 461 (13 Jul 45)]

BY COMMAND OF GENERAL SOMERVELL:

LeR. LUTES
Major General, GSC
Chief of Staff

OFFICIAL:
EDWARD F. WITSELL
Major General
Acting the Adjutant General

DISTRIBUTION: AAF (10); AGF (10); ASF (2); S Div ASF (1); AAF Comds (2);
Arm & Sv Bd (1); T of Opns (10); Tech Sv (2); SvC (10); PC&S (1)
except Air Bases (3); PE, 9 (5); Dist O, 9 (5); Dist Br O, 9 (3);
Reg O, 9 (3); Establishments, 9 (except Amm Establishments) (5);
Decentralized Sub-O, 9 (3); Tk Deps, 9 (5); Gen & Sp Sv Schs (10);
USMA (2); A (10); CHQ (10); D (2); AF (5); R 9 (2); Bn 9 (2);
C 9 (3).

One (1) copy to each of the following T/O & E's: 1-457T, 11-7, 11-7S,
11-16, 11-47, 11-57, 11-107, 11-127, 11-237, 11-287, 11-317, 11-357,
11-500, Signal Service Organization, Wire & Cable, Wire Rep Sec
(GQ), 11-587.

For explanation of symbols, see FM 21-6.

Headquarters Army Service Forces 13 July 1945

REGISTERED

25 JULI 1956

L.D.O. BBN

Group G

Page 1:

The following paragraph is added preceding "For full information, x x x x x (OPSR):"

The Note Symbol column is used to carry reference symbols to notes which are listed in this pamphlet under the heading "NOTES." Note symbols may be of letter (a) (c), character (%) (♦) or SNL number (A-1) (C-6) type.

The following is added as the last paragraph:

PLAN FOR MAINTENANCE—Maintenance operations to be performed in each echelon are indicated by the availability of spare parts as shown in a particular echelon column or a symbol signifying authority to requisition for use in that echelon.

(O.O. 140.2/16457)

(O.O. 300.7/4453)

Page 3:

Under "LOAD—TRUCK, x x x x x, M30 (Contd.):"

The 5th item is changed to read:

**J-8 W 17-C-35081 — C145726 CORD, light extension,
male and female plugs,
length 25 ft., 110 v., No. 12 A.W.G.,
two conductor..... 2**

The 6th item is changed to read:

**J-8 W 17-C-35092 — C145726 CORD, light extension,
male and female plugs,
length 50 ft., 110 v., No. 12 A.W.G.,
two conductor..... 3**

"M-1" in the Note Symbol column opposite the 7th item, "17-C-35186-45, CORD, rubber covered, x x x x x, w/connector and plug," is changed to read **J-8**.

"M-1" in the Note Symbol column opposite the 8th item, "17-C-35186-25, CORD, rubber covered, x x x x x, w/connector one end," is changed to read **J-8**.

(O.O.M. 413/ St Louis Ord Dep (11 May 45))

Page 17:

The following item is added in its alphabetical order:

**J-5 W 40-V-900 — — VISE, drill press, jaw, width 6½ in.,
jaw opng. 6 in., jaw depth 1¼ in..... 1**
(O.O.M. 413/Rar Ars (23 Jun 45))

Page 19:

Under "NOTES" the 1st paragraph is changed to read:

(♦) **ITEMS SYMBOLED BY AN SNL NUMBER ARE NOT NECESSARILY SO STORED, REVIEWED AND REQUISITIONED.** The SNL number symbol indicates where further usage of the item may be found. Where numbers without an SNL prefix occur as the stock number, the SNL number in the Note Symbol column indicates the SNL where the item is stored, issued, requisitioned and reviewed.

(O.O. 140.2/16457)

Arch

GEREGISTREERT
25 JULI 1956

ORDNANCE SUPPLY CATALOG

Group G

Technical Reference: TM 9-801

Organizational Spare Parts and Equipment for

**Truck, 2½ Ton, 6 x 6, Signal
Corps Repair, M30**

WAR DEPARTMENT

Washington 25, D. C., 28 June 1946

Ordnance Supply Catalog, ORD 7 SNL G-235, 11 January 1945,
is changed as shown herein.

[AG 461 (20 Jun 46)]

BY ORDER OF THE SECRETARY OF WAR:

OFFICIAL:

EDWARD F. WITSELL

Major General

The Adjutant General

DWIGHT D. EISENHOWER

Chief of Staff

DISTRIBUTION:

AAF (5); AGF (2); T (10); Dept (5); AAF Comds (2); Arm &
Sv Bd (1); Tech Sv (2); A Areas (10); FC (1); BU (1); PE
(Ord O) (5); Dist 9 (3); Establishments 9 (3) except Am
Establishments (0); Gen & Sp Sv Sch (5); A (3); CHQ (2);
D (2); R 9 (1); Bn 9 (1); C 9 (1); AF (3); T/O & E 1-457R;
1-567R; 11-7; 11-57; 11-557T.

For explanation of distribution formula, see FM 21-6.

War Department

June 1946

Page 1:

The RESTRICTED classification is hereby removed.

Page 8:

Under "VEHICULAR SPARE PARTS AND EQUIPMENT (Contd.)" "LOAD—TRUCK, 2½-TON, 6 x 6, SIGNAL CORPS REPAIR, M30 (Contd.)," the third item is changed to read:

J-1 W 66-C-1368-8C — DEV-TYPE P-NC-562 COMPRESSOR, air, portable, elec. motor driven, 1/3 hp., 110 v., 60 c., single-ph., 2.8 cu. ft. per minute, w/receiver... 1

Page 17:

The following item is added in its alphabetical order:

J-17 W 40-G-518 — DEV-P-GD-502-2 GUN, paint spray, pressure feed, bleeder type, w/one—1 qt. cup, complete..... 1

VEHICULAR SPARE PARTS AND EQUIPMENT

| NOTE SYMBOL Col. 1 | STOCK NO. (Order by this No.) Col. 2 | FIGURE NO. Col. 3 | PIECE MARK OR PART NO. Col. 4 | DRAWING NO. Col. 5 | NOMENCLATURE Col. 6 | QUAN. PER VEHICLE Col. 7 | UNIT PRICE Col. 8 |
|--------------------|--------------------------------------|-------------------|-------------------------------|--------------------|---|--------------------------|-------------------|
| (*) | | | | | | | |
| G-508 | 33-B-174 | | | GM-2090461 | BELT, fan (set of 2) (Note 1) | 1 | |
| H-14 | 8-C-650 | | | | CAP, tire valve (Note 1) | 2 | |
| H-14 | 8-C-6750 | | | | CORE, tire valve (5 in box) (Note 1) | 1 | |
| H-4 | H104-142303 | | DLAX1F | DLAX1 | LAMP, elec., incand., min., 6-8 v., single-tung-filister, No. 63, cp (Note 1) | 2 | |
| H-4 | M001-01-07408 | | C84934J | C84934 | LAMP UNIT, blackout stop, sealed, onc opening, 6-8 v., 3 cp., assembly (Note 1) | 1 | |
| H-4 | H004-05-04420 | | C84908K | C84908 | LAMP UNIT, blackout tail, sealed, 4 opening, 6-8 v., 3 cp., assembly (Note 1) | 1 | |
| H-4 | 8-L-419 | | C84908J | C84908 | LAMP UNIT, service tail and stop, sealed, 6-8 v., 3 cp., assembly (Note 1) | 1 | |
| H-1 | 42-P-5347 | | | | PIN-SET, cotter, split, S. (assorted, in small box) (Note 1) | 1 | |
| H-4 | 17-P-5355 | | | GM-1557101 | PLUG, spark, w/gasket (Note 1) | 1 | |
| H-14 | | | | | TIRE, 7.50 x 20, 8 ply (Note 1) | 1 | |
| H-14 | | | | | TUBE, 7.50 x 20 | 1 | |
| G-9 | | | | | WHEEL, 20 x 7 | 1 | |

VEHICULAR SPARE PARTS

VEHICULAR ACCESSORIES

The following list of equipment is issued for the maintenance of each Truck, 2 1/2-Ton, 6 x 6, Signal Corps Repair, M30. Since two types of axles are used on these chassis, viz., the "Banjo" and the "Split" types, tools special to each type will be so designated.

Note 1 - Originally supplied in Emergency Parts Repair Kit No. 29. The complete Kit, including Container 8-C-5498-50, may be procured under Stock No. 8-K-750.

ORD 7 SNL G-235
Organizational Spare
Parts and Equipment

VEHICULAR SPARE PARTS AND EQUIPMENT (Contd.)

| NOTE SYMBOL Col. 1 | STOCK NO. (Order by this No.) Col. 2 | FIGURE NO. Col. 3 | PIECE MARK OR PART NO. Col. 4 | DRAWING NO. Col. 5 | NOMENCLATURE Col. 6 | QUAN. PER VEHICLE Col. 7 | UNIT PRICE Col. 8 |
|--------------------|--------------------------------------|-------------------|-------------------------------|--|--|--------------------------|-------------------|
| (♦) | | | | | VEHICULAR ACCESSORIES (Contd.) | | |
| K-3 | 41-A-1+825 | | | A349744 | ADAPTER, gun, lubricating, hydraulic to push type, thin stem, w locking sleeve | 1 | |
| J-15 | 41-B-15 | 7 | | GM-2146735 TM 9-801 | BAG, tool BOOK, Technical Manual 9-801, Truck, 2 1/2-Ton, 6 x 6, GMC CCKW-352 and 353 | 1 | |
| G-9 | W 8-C-1575 | | | | CHAIN, tire, extra-heavy, dual, 7.50-20, type TD | 4 | Note 1 |
| G-9 | W 8-C-2380 | | | | CHAIN, tire, extra-heavy, single, 7.50-20, type TS | 2 | |
| G-9 | W 8-C-5498-50 | | | | CONTAINER, metal, spare parts kit (QM-09553Y) (Note 1) | 1 | |
| H-1 | H001-07-16540 | | 110633 | | (Mounting parts: + NUT, mach. screw, hex., S., No. 10 (0.190)-24NC-1 | | |
| H-1 | H001-10-30103 | | 110502 | | + SCREW, mach., round-head, S., No. 10 (0.190)-24NC-2 x 3/4 | | |
| H-1 | H001-15-18005 | | 106497 | | + WASHER, lock, reg., S., No. 10 (0.190) | | |
| H-1 | H001-15-30005 | | 103338 | | + WASHER, plain, S., SAE standard, No. 10 (0.190) | | |
| G-508 | W | 7 | | GM-2147196 | CRANK, starting, assembly (w/bracket, bumper support) | 1 | |
| Engr. C. W | 58-E-202 | 7 | | C74060 | EXTINGUISHER, fire, CTC, capacity 1 qt., w bracket | 1 | |
| J-9 | W 8-G-615 | | | B240905 SV-7188B C144803 AD-6250X | GAGE, tire pressure, general service type | 1 | |
| K-3 | W 41-G-1344-40 | 7 | | | GUN, lubricating chassis, hand operated, capacity 15 oz. | 1 | |
| J-6 | W 41-H-523 | 7 | | | HAMMER, machs., ball peen, weight 1 lb. | 1 | |
| G-508 | W 41-H-1541-10 | 7 | | GM-2146130 | HANDLE, wrench (for wheel nut wrench) | 1 | |
| J-5 | W 41-J-72 | 7 | | C62346 WAK-926 GM-3661124 w/3661168 | JACK, automobile and motor truck, hydraulic, w/handle, capacity 3 tons | 1 | |

| | | | | | | | | | |
|-----|---|-------------|---|--------|---|---|----------------|---|---|
| K-2 | W | 13-O-1530 | 7 | CLGX1B | — | — | CLGX1 B8514 | KIT, desertizing, transport vehicle. (Note 1) | 1 |
| K-2 | W | — | 7 | — | — | — | — | KIT, winterizing, transport vehicle (Note 2) | 1 |
| K-3 | W | — | 7 | — | — | — | — | OILER, S., push bottom, straight spout, capacity 1 1/2 pt., length of spout 4 in. | 3 |
| H-8 | W | — | 7 | — | — | — | GM-2158475 | ORDER (guide), lubricating, War Dept., No. 504 PADLOCK, 1 3/4 in., keyed interchangeably, set of 2 locks and 3 keys, w chain and cotter pin, complete (for body door and tire carrier) | 1 |
| J-2 | W | 41-P-1650 | 7 | — | — | — | — | PLIERS, comb., slip-ft., wire cutting type, length 6 in. | 1 |
| G-9 | W | 41-P-5000 | 7 | TGAX1B | — | — | — | PUMP, tire, hand, 1 cylinder | 1 |
| J-4 | W | 41-S-1104 | 7 | — | — | — | — | SCREWDRIVER, comm., normal duty, single grip, length of blade 6 in., width of blade 3/16 in. | 1 |
| J-4 | W | 41-S-1117-4 | 7 | — | — | — | — | SCREWDRIVER, comm., normal duty, single grip, clutch head, length of blade 4 in., screw size 3/32 in. | 1 |
| J-4 | W | 41-S-1117-6 | 7 | — | — | — | — | SCREWDRIVER, comm., normal duty, single grip, clutch head, length of blade 6 in., screw size 1/4 in. | 1 |
| J-4 | W | 41-S-1117-8 | 7 | — | — | — | — | SCREWDRIVER, comm., normal duty, single grip, clutch head, length of blade 8 in., screw size 5/16 in. | 1 |
| J-4 | W | 41-S-1636 | 7 | TGAX3A | — | — | TGAX3 | SCREWDRIVER, recessed screw (Phillips type), straight, size No. 1 (for Banjo type axle chassis only) | 1 |
| J-4 | W | 41-S-1638 | 7 | TGAX3B | — | — | TGAX3 | SCREWDRIVER, recessed screw (Phillips type), straight, size No. 2 | 1 |
| J-4 | W | 41-S-1640 | 7 | TGAX3C | — | — | TGAX3 | SCREWDRIVER, recessed screw (Phillips type), straight, size No. 3 (for Banjo type axle chassis only) | 1 |
| J-4 | W | 41-S-1642 | 7 | TGAX3D | — | — | TGAX3 | SCREWDRIVER, recessed screw (Phillips type), straight, size No. 4 (for Banjo type axle chassis only) | 1 |
| H-5 | W | 17-T-805 | — | — | — | — | A312440 | TAPE, friction, general use, black, width 3/4 in. (Note 3) | 1 |

Note 1. One per vehicle. Additional issue by the Adjutant General is as indicated in FM 21-6.

Note 2. When recommended by the Theatre of Operations Commander.

Note 3. Originally supplied in Emergency Repair Parts Kit No. 29.

VEHICULAR SPARE PARTS AND EQUIPMENT (Contd.)

| NOTE SYMBOL Col. 1 | STOCK NO (Order by this No.) Col. 2 | FIGURE NO. Col. 3 | PIECE MARK OR PART NO. Col. 4 | DRAWING NO. Col. 5 | NOMENCLATURE Col. 6 | QUAN. PER VEHICLE Col. 7 | UNIT PRICE Col. 8 |
|--------------------|-------------------------------------|-------------------|-------------------------------|--------------------|---|--------------------------|-------------------|
| (*) | | | | | VEHICULAR ACCESSORIES (Contd.) | | |
| H-9 | 22-W-650 | | — | — | WIRE, brass, hard (spring temper) diam. 0.162 in., spool (or coil), 10 lb. (Note 1) | 1 | |
| J-4 | W 41-W-450 | 7 | — | — | WRENCH, adjusting, automobile type, length 15 in., jaw opening 3 3/8 in. | 1 | |
| J-4 | W 41-W-488 | 7 | TKAX3C | TKAX3 | WRENCH, adjusting, crescent type, single-end, length 12 in., jaw opening 1 1/16 in. | 1 | |
| J-4 | W 41-W-991 | 7 | TKKX1D | TKKX1 | WRENCH, engr., angle 15°, double-head, open-end, normal duty, alloy-S., size of openings 3/8 in. and 7/16 in. | 1 | |
| J-4 | W 41-W-1003 | 7 | TKKX13D | TKKX13 | WRENCH, engr., angle 15°, double head, open end, normal duty, alloy-S., size of openings 1/2 in. and 19/32 in. | 1 | |
| J-4 | W 41-W-1005-5 | 7 | TKKX13F | TKKX13 | WRENCH, engr., angle 15°, double-head, open-end, normal duty, alloy-S., size of openings 1/16 in. and 11/16 in. | 1 | |
| J-4 | W 41-W-1008-10 | 7 | TKKX14A | TKKX14 | WRENCH, engr., angle 15°, double-head, open-end, normal duty, alloy-S., size of openings 3/8 in. and 21/32 in. | 1 | |
| J-4 | W 41-W-1012-5 | 7 | TKKX3B | TKKX3 | WRENCH, engr., angle 15°, double-head, open-end, normal duty, alloy-S., size of openings 3/4 in. and 7/8 in. | 1 | |
| G-508 | W 41-W-3728-100 | 7 | — | GM-2146479 | WRENCH, spark plug, w handle | 1 | |
| G-508 | W 41-W-3728-100 | 7 | — | GM-3670067 | WRENCH, tubular, pronged, double-head, 4 lug, size 2 1/2 in. O.D. x 1/16 in. wall x 3 1/8 in. long (for Banjo type axle chassis only) | 1 | |
| G-508 | W 41-W-1991-10 | 7 | — | GM-2144844 | WRENCH, wheel bearing nut (for Split type axle chassis only) | 1 | |
| G-508 | W 41-W-3825 | 7 | — | GM-2144843 | WRENCH, wheel bearing nut (for Split type axle chassis only) | 1 | |
| G-508 | W | 7 | — | GM-2144835 | WRENCH, wheel stud nut | 1 | |

**LOAD—TRUCK, 2 1/2-TON, 6 x 6,
SIGNAL CORPS REPAIR, M30**

The following list prescribes the allowances of machine units, benches, and tools normally issued to be carried on Truck, 2 1/2-Ton, 6 x 6, Signal Corps Repair, M30, for the maintenance and repair of such materiel, and is compiled to provide for listing of sets of equipment and unit assemblages required for issue and not otherwise classified.

The items listed as components of sets will not normally be segregated and made into sets or unit assemblages for the purpose of storage and review. They are so listed to establish a simplified basis for authorized issues.

Parts for items as listed herein may be requisitioned from the ORD 8 Section of the appropriate SNL as indicated in the Note Symbol column.

| | | | | | |
|------|---|---------------|---|---------------------------|----|
| J-15 | W | 41-B-438 | — | E7763 D84719 D84758 | 1 |
| J-15 | W | 41-B-439 | — | E7763 D84719 D84758 | 1 |
| J-15 | W | 41-B-16+5 | 6 | C145697 | 15 |
| J-15 | W | 41-B-1835-500 | 6 | C145698 D84729 | 8 |
| J-15 | W | 46-C-4018 | — | — | 1 |
| J-15 | W | 42-C-4625 | 4 | — | 2 |

Note 1. Originally supplied in Emergency Repair Parts Kit No. 29.

BENCH, cabinet, Type VI, Class D, metal frame
BENCH, cabinet, Type VI, Class E, metal frame
BOX, spare parts, transparent, size 1 1/4 in. x 7 1/4 in. x 4 1/4 in.
BOX, tool and spare parts, S, Type V, Class A
CABINET, wood, filing, size over-all 33 3/4 in. x 19 in. (Sig. Corps Dwg. No. SC-D-7412)
CAN, safety, S, safety valve, flexible spout, flame arrester, capacity, gallons 1.

ORD 7 SNL G-235
Organizational Spare
Parts and Equipment

VEHICULAR SPARE PARTS AND EQUIPMENT (Contd.)

| NOTE SYMBOL Col. 1 | STOCK NO. (Order by this No.) Col. 2 | FIGURE NO. Col. 3 | PIECE MARK OR PART NO. Col. 4 | DRAWING NO. Col. 5 | NOMENCLATURE Col. 6 | QUAN. PER VEHICLE Col. 7 | UNIT PRICE Col. 8 |
|-----------------------|--|----------------------|----------------------------------|-----------------------|--|-----------------------------|----------------------|
| (*) | | | | | | | |
| J-15 | W 41-C-857-425 | | | | LOAD TRUCK, 2 1/2-TON, 6 x 6, SIGNAL CORPS REPAIR, M30 (Contd.) | 1 | |
| J-15 | W 41-C-877-850 | | | | CHEST, tool, empty, metal, length 17 1/2 in., width 8 1/2 in., height 11 1/2 in. (Sig. Corps Dwg. No. SC-D-7423) | 1 | |
| J-101 | W 66-C-1368-85 | | | | CHEST, wood, empty, dry battery, length 16 1/4 in., width 8 1/2 in., height 9 in. (Sig. Corps Dwg. No. SC-D-7422) | 1 | |
| M-1 | W 17-C-35080-30 | 5 | | | COMPRESSOR, air, portable, electric-driven, 1/4 hp., 110 v., 60 cycle, sgle-ph., complete, w/ tank | 2 | |
| M-1 | W 17-C-35081 | 5 | | C145726 | CORD, light extension, heavy duty, 2 conductor, 16 gage, rubber covered, 25 ft. long, complete with heavy rubber switch type oil resisting handle, heavy rubber attaching plug, and lamp guard, w/ shield and hook | 2 | |
| M-1 | W 17-C-35092 | 5 | | C145726 | CORD, light extension, w/ socket and plug, 110 v., length 25 ft., gage 12, conductor 2 | 3 | |
| M-1 | W 17-C-35186-45 | | | | CORD, rubber covered, six conductor, shielded, length 50 ft., gage 12, conductor 2 | 1 | |
| M-1 | W 17-C-35186-25 | | | | CORD, rubber covered, w/ connector and plug, length 100 ft., covered, two conductor, No. 8 | 1 | |
| J-15 | W 17-C-37545 | | | | CORD, rubber covered, two conductor, one end A.W.G., length 48 in., w/ connector one end | 1 | |
| J-1 | W 41-D-1425 | 6 | TZDX1A | TZDX1 | COVER, battery compartment, S., size 18 1/4 in. x 11 1/4 in. x 48 in. (Sig. Corps Dwg. No. SC-D-7407) | 1 | |
| J-101 | W 40-D-344 | 4 | | | DRESSER, emery wheel, four cutter type | 1 | |
| J-2 | W 41-D-1828 | 6 | MC57B | MC57 | DRILL, electric, portable, universal current, heavy duty, w/ STAND, capacity 3/8 in., volts 115 | 1 | |
| | | | | | DRILL, hand, hollow handle, plain, capacity of chuck 0 to 3/8 in. | 2 | |

| J-10 | W | 40-D-1877-75 | | | | | |
|------|---|--------------|---------|--|--|--------|---|
| J-10 | W | 40-C-278-240 | | | | HTM-21 | DRILL, twist, H.S.S., straight shank, fractional sizes, short series, in set, size $\frac{1}{16}$ in. to $\frac{3}{8}$ in. by 64ths |
| J-10 | W | 40-D-1878-5 | TMBXIDE | | | TMBX1 | (Consisting of: 1 CASE, drill, metal, empty, indexed for high-speed-steel, twist drills, fractional sizes, $\frac{1}{16}$ in. to $\frac{3}{8}$ in. by 64ths, long series |
| J-10 | W | 40-D-1878-6 | TMBX2BG | | | TMBX2 | 1 DRILL, twist, high-speed-steel, straight-shank, fractional size, single, short series, size in. $\frac{1}{16}$, over-all length in. $2\frac{1}{2}$ |
| J-10 | W | 40-D-1878-7 | TMBX2BP | | | TMBX2 | 1 DRILL, twist, high-speed-steel, straight-shank, fractional size, single, short series, size in. $\frac{3}{64}$, over-all length in. $2\frac{3}{8}$ |
| J-10 | W | 40-D-1878-8 | TMBX2BW | | | TMBX2 | 1 DRILL, twist, high-speed-steel, straight-shank, fractional size, single, short series, size in. $\frac{3}{32}$, over-all length in. $2\frac{3}{4}$ |
| J-10 | W | 40-D-1878-9 | TMBX2DD | | | TMBX2 | 1 DRILL, twist, high-speed-steel, straight-shank, fractional size, single, short series, size in. $\frac{1}{8}$, over-all length in. $2\frac{1}{8}$ |
| J-10 | W | 40-D-1878-10 | TMBX3BD | | | TMBX3 | 1 DRILL, twist, high-speed-steel, straight-shank, fractional size, single, short series, size in. $\frac{1}{8}$, over-all length in. 3 |
| J-10 | W | 40-D-1878-11 | TMBX3BH | | | TMBX3 | 1 DRILL, twist, high-speed-steel, straight-shank, fractional size, single, short series, size in. $\frac{3}{64}$, over-all length in. $3\frac{1}{8}$ |
| J-10 | W | 40-D-1878-12 | TMBX3BN | | | TMBX3 | 1 DRILL, twist, high-speed-steel, straight-shank, fractional size, single, short series, size in. $\frac{3}{32}$, over-all length in. $3\frac{1}{4}$ |
| J-10 | W | 40-D-1878-13 | TMBX3PT | | | TMBX3 | 1 DRILL, twist, high-speed-steel, straight-shank, fractional size, single, short series, size in. $\frac{1}{64}$, over-all length in. $3\frac{3}{8}$ |
| J-10 | W | 40-D-1878-14 | TMBX3DB | | | TMBX3 | 1 DRILL, twist, high-speed-steel, straight-shank, fractional size, single, short series, size in. $\frac{3}{64}$, over-all length in. $3\frac{1}{2}$ |
| | | | | | | | 1 DRILL, twist, high-speed-steel, straight-shank, fractional size, single, short series, size in. $\frac{1}{64}$, over-all length in. $3\frac{5}{8}$ |

ORD 7 SNL G-235
Organizational Spare
Parts and Equipment

VEHICULAR SPARE PARTS AND EQUIPMENT (Contd.)

| NOTE SYMBOL Col. 1 | STOCK NO. (Order by this No.) Col. 2 | FIGURE NO. Col. 3 | PIECE MARK OR PART NO. Col. 4 | DRAWING NO. Col. 5 | NOMENCLATURE Col. 6 | QUAN. PER VEHICLE Col. 7 | UNIT PRICE Col. 8 |
|-----------------------|--|----------------------|----------------------------------|-----------------------|--|-----------------------------|----------------------|
| (*) | | | | | LOAD-TRUCK, 2 1/2-TON, 6 x 6, SIGNAL CORPS REPAIR, M30 (Contd.) | | |
| | | | | | DRILL, twist, H.S.S., straight shank, fractional sizes, short series, in set, size 1/16 in. to 3/8 in. | | |
| J-10 | W 40-D-1878-15 | | TMBX3DE | TMBX3 | 1 DRILL, twist, high-speed-steel, straight-shank, fractional size, single, short series, size in. 7/32, over-all length in. 3 3/4 | | |
| J-10 | W 40-D-1878-16 | | TMBX4BC | TMBX4 | 1 DRILL, twist, high-speed-steel, straight-shank, fractional size, single, short series, size in. 15/64, over-all length in. 3 7/8 | | |
| J-10 | W 40-D-1878-17 | | TMBX4BF | TMBX4 | 1 DRILL, twist, high-speed-steel, straight-shank, fractional size, single, short series, size in. 1/4, over-all length in. 4 1/2 | | |
| J-10 | W 40-D-1878-18 | | TMBX4BL | TMBX4 | 1 DRILL, twist, high-speed-steel, straight-shank, fractional size, single, short series, size in. 17/64, over-all length in. 4 1/2 | | |
| J-10 | W 40-D-1878-19 | | TMBX4BP | TMBX4 | 1 DRILL, twist, high-speed-steel, straight-shank, fractional size, single, short series, size in. 9/32, over-all length in. 4 3/4 | | |
| J-10 | W 40-D-1878-20 | | TMBX4BS | TMBX4 | 1 DRILL, twist, high-speed-steel, straight-shank, fractional size, single, short series, size in. 19/64, over-all length in. 4 3/4 | | |
| J-10 | W 40-D-1878-21 | | TMBX4BW | TMBX4 | 1 DRILL, twist, high-speed-steel, straight-shank, fractional size, single, short series, size in. 5/16, over-all length in. 5 | | |
| J-10 | W 40-D-1878-22 | | TMBX4DB | TMBX4 | 1 DRILL, twist, high-speed-steel, straight-shank, fractional size, single, short series, size in. 27/64, over-all length in. 5 | | |
| J-10 | W 40-D-1878-23 | | TMBX4DE | TMBX4 | 1 DRILL, twist, high-speed-steel, straight-shank, fractional size, single, short series, size in. 11/32, over-all length in. 5 1/4 | | |

| | | | | | |
|------|---|--------------|---------|--------|---|
| J-10 | W | 40-D-1878-24 | TMBX5BC | TMBX5 | 1 DRILL, twist, high-speed-steel, straight-shank, fractional size, single, short series, size in. $\frac{23}{64}$, over-all length in. $5\frac{1}{4}$ |
| J-10 | W | 40-D-1878-25 | TMBX5BE | TMBX5 | 1 DRILL, twist, high-speed-steel, straight-shank, fractional size, single, short series, size in. $\frac{3}{8}$, over-all length in. $5\frac{5}{8}$ |
| J-10 | W | 40-D-1889 | — | — | DRILL, twist, high-speed-steel, straight shank, wire gage size, in set, w/ metal case, gage size No. 1 to 60 (Consisting of: 1 CASE, drill, metal, empty, indexed for H.S.S. twist drills, wire gage, sizes No. 1 to 60 |
| J-10 | W | 40-C-278-600 | HTM-60 | HTM-60 | 1 DRILL, twist, high-speed-steel, straight shank, wire gage size, single, wire gage No. 1, size in. 0.228, over-all length in. 4 |
| J-10 | W | 40-D-1890-1 | TMBX4BB | TMBX4 | 1 DRILL, twist, high-speed-steel, straight shank, wire gage size, single, wire gage No. 2, size in. 0.221, over-all length in. $3\frac{15}{16}$ |
| J-10 | W | 40-D-1890-2 | — | — | 1 DRILL, twist, high-speed-steel, straight shank, wire gage size, single, wire gage No. 3, size in. 0.213, over-all length in. $3\frac{15}{16}$ |
| J-10 | W | 40-D-1890-3 | — | — | 1 DRILL, twist, high-speed-steel, straight shank, wire gage size, single, wire gage No. 4, size in. 0.209, over-all length in. $3\frac{7}{8}$ |
| J-10 | W | 40-D-1890-4 | TMBX3DC | TMBX3 | 1 DRILL, twist, high-speed-steel, straight shank, wire gage size, single, wire gage No. 5, size in. 0.2055, over-all length in. $3\frac{15}{16}$ |
| J-10 | W | 40-D-1890-5 | — | — | 1 DRILL, twist, high-speed-steel, straight shank, wire gage size, single, wire gage No. 6, size in. 0.204, over-all length in. $3\frac{15}{16}$ |
| J-10 | W | 40-D-1890-6 | — | — | 1 DRILL, twist, high-speed-steel, straight shank, wire gage size, single, wire gage No. 7, size in. 0.201, over-all length in. $3\frac{3}{4}$ |
| J-10 | W | 40-D-1890-7 | — | — | 1 DRILL, twist, high-speed-steel, straight shank, wire gage size, single, wire gage No. 8, size in. 0.199, over-all length in. $3\frac{11}{16}$ |
| J-10 | W | 40-D-1890-8 | TMBX3DA | TMBX3 | |

VEHICULAR SPARE PARTS AND EQUIPMENT (Contd.)

| NOTE SYMBOL Col. 1 | STOCK NO. (Order by this No.) Col. 2 | FIGURE NO. Col. 3 | PIECE MARK OR PART NO. Col. 4 | DRAWING NO. Col. 5 | NOMENCLATURE Col. 6 | QUAN. PER VEHICLE Col. 7 | UNIT PRICE Col. 8 |
|--------------------|--------------------------------------|-------------------|-------------------------------|--------------------|--|--------------------------|-------------------|
| (*) | | | | | LOAD TRUCK, 2 1/2-TON, 6 x 6, SIGNAL CORPS REPAIR, M30 (Contd.) | | |
| J-10 | W 40-D-1890-9 | | TMBX3BZ | TMBX3 | DRILL, twist, high-speed-steel, straight shank, wire gage size, single, wire gage size, in set, w/ metal case, gage sizes No. 1 to 60 (Contd.) | | |
| J-10 | W 40-D-1890-10 | | | | 1 DRILL, twist, high-speed-steel, straight shank, wire gage size, single, wire gage size, in set, w/ metal case, gage sizes No. 1 to 60 (Contd.) | | |
| J-10 | W 40-D-1890-11 | | TMBX3BU | TMBX3 | 1 DRILL, twist, high-speed-steel, straight shank, wire gage size, single, wire gage size, in set, w/ metal case, gage sizes No. 1 to 60 (Contd.) | | |
| J-10 | W 40-D-1890-12 | | | | 1 DRILL, twist, high-speed-steel, straight shank, wire gage size, single, wire gage size, in set, w/ metal case, gage sizes No. 1 to 60 (Contd.) | | |
| J-10 | W 40-D-1890-13 | | TMBX3BS | TMBX3 | 1 DRILL, twist, high-speed-steel, straight shank, wire gage size, single, wire gage size, in set, w/ metal case, gage sizes No. 1 to 60 (Contd.) | | |
| J-10 | W 40-D-1890-14 | | | | 1 DRILL, twist, high-speed-steel, straight shank, wire gage size, single, wire gage size, in set, w/ metal case, gage sizes No. 1 to 60 (Contd.) | | |
| J-10 | W 40-D-1890-15 | | TMBX3BR | TMBX3 | 1 DRILL, twist, high-speed-steel, straight shank, wire gage size, single, wire gage size, in set, w/ metal case, gage sizes No. 1 to 60 (Contd.) | | |
| J-10 | W 40-D-1890-16 | | TMBX3BQ | TMBX3 | 1 DRILL, twist, high-speed-steel, straight shank, wire gage size, single, wire gage size, in set, w/ metal case, gage sizes No. 1 to 60 (Contd.) | | |
| J-10 | W 40-D-1890-17 | | TMBX3BP | TMBX3 | 1 DRILL, twist, high-speed-steel, straight shank, wire gage size, single, wire gage size, in set, w/ metal case, gage sizes No. 1 to 60 (Contd.) | | |

| | | | | | |
|------|---|--------------|---------|-------|--|
| J-10 | W | 40-D-1890-18 | TMBX3BM | TMBX3 | 1 DRILL, twist, high-speed-steel, straight shank, wire gage size, single, wire gage No. 18, size in. 0.1695, over-all length in. 3 ¹ / ₁₆ |
| J-10 | W | 40-D-1890-19 | TMBX3BL | TMBX3 | 1 DRILL, twist, high-speed-steel, straight shank, wire gage size, single, wire gage No. 19, size in. 0.166, over-all length in. 3 ¹ / ₄ |
| J-10 | W | 40-D-1890-20 | TMBX3BK | TMBX3 | 1 DRILL, twist, high-speed-steel, straight shank, wire gage size, single, wire gage No. 20, size in. 0.161, over-all length in. 3 ³ / ₁₆ |
| J-10 | W | 40-D-1890-21 | — | — | 1 DRILL, twist, high-speed-steel, straight shank, wire gage size, single, wire gage No. 21, size in. 0.159, over-all length in. 3 ³ / ₁₆ |
| J-10 | W | 40-D-1890-22 | — | — | 1 DRILL, twist, high-speed-steel, straight shank, wire gage size, single, wire gage No. 22, size in. 0.157, over-all length in. 3 ¹ / ₈ |
| J-10 | W | 40-D-1890-23 | — | — | 1 DRILL, twist, high-speed-steel, straight shank, wire gage size, single, wire gage No. 23, size in. 0.154, over-all length in. 3 ¹ / ₁₆ |
| J-10 | W | 40-D-1890-24 | TMBX3BG | TMBX3 | 1 DRILL, twist, high-speed-steel, straight shank, wire gage size, single, wire gage No. 24, size in. 0.152, over-all length in. 3 ¹ / ₁₆ |
| J-10 | W | 40-D-1890-25 | — | — | 1 DRILL, twist, high-speed-steel, straight shank, wire gage size, single, wire gage No. 25, size in. 0.1495, over-all length in. 3 |
| J-10 | W | 40-D-1890-26 | TMBX3BF | TMBX3 | 1 DRILL, twist, high-speed-steel, straight shank, wire gage size, single, wire gage No. 26, size in. 0.147, over-all length in. 2 ¹ / ₁₆ |
| J-10 | W | 40-D-1890-27 | TMBX3BE | TMBX3 | 1 DRILL, twist, high-speed-steel, straight shank, wire gage size, single, wire gage No. 27, size in. 0.144, over-all length in. 2 ¹ / ₁₆ |
| J-10 | W | 40-D-1890-28 | — | — | 1 DRILL, twist, high-speed-steel, straight shank, wire gage size, single, wire gage No. 28, size in. 0.1405, over-all length in. 2 ⁷ / ₈ |
| J-10 | W | 40-D-1890-29 | TMBX3BB | TMBX3 | 1 DRILL, twist, high-speed-steel, straight shank, wire gage size, single, wire gage No. 29, size in. 0.136, over-all length in. 2 ¹³ / ₁₆ |
| J-10 | W | 40-D-1890-30 | TMBX2DE | TMBX2 | 1 DRILL, twist, high-speed-steel, straight shank, wire gage size, single, wire gage No. 30, size in. 0.1285, over-all length in. 2 ¹³ / ₁₆ |

ORD 7 SNL G-235

Organizational Spare
Parts and Equipment

VEHICULAR SPARE PARTS AND EQUIPMENT (Contd.)

| NOTE SYMBOL Col. 1 | STOCK NO. (Order by this No.) Col. 2 | FIGURE NO. Col. 3 | PIECE MARK OR PART NO. Col. 4 | DRAWING NO. Col. 5 | NOMENCLATURE Col. 6 | QUAN. PER VEHICLE Col. 7 | UNIT PRICE Col. 8 | |
|--------------------|--------------------------------------|-------------------|-------------------------------|--------------------|---|--------------------------|-------------------|--|
| (♦) | | | | | | | | |
| J-10 W | 40-D-1890-31 | | TMBX2DB | TMBX2 | <p>LOAD - TRUCK, 2½-TON, 6 x 6, SIGNAL CORPS REPAIR, M30 (Contd.)</p> <p>DRILL, twist, high-speed-steel, straight shank, wire gage size, in set, w. metal case, gage sizes No. 1 to 60 (Contd.)</p> <p>1 DRILL, twist, high-speed-steel, straight shank, wire gage size, single, wire gage No. 31, size in. 0.120, over-all length in. 2¾</p> <p>1 DRILL, twist, high-speed-steel, straight shank, wire gage size, single, wire gage No. 32, size in. 0.116, over-all length in. 2½</p> <p>1 DRILL, twist, high-speed-steel, straight shank, wire gage size, single, wire gage No. 33, size in. 0.113, over-all length in. 2½</p> <p>1 DRILL, twist, high-speed-steel, straight shank, wire gage size, single, wire gage No. 34, size in. 0.111, over-all length in. 2½</p> <p>1 DRILL, twist, high-speed-steel, straight shank, wire gage size, single, wire gage No. 35, size in. 0.110, over-all length in. 2½</p> <p>1 DRILL, twist, high-speed-steel, straight shank, wire gage size, single, wire gage No. 36, size in. 0.1065, over-all length in. 2½</p> <p>1 DRILL, twist, high-speed-steel, straight shank, wire gage size, single, wire gage No. 37, size in. 0.104, over-all length in. 2½</p> <p>1 DRILL, twist, high-speed-steel, straight shank, wire gage size, single, wire gage No. 38, size in. 0.1015, over-all length in. 2½</p> <p>1 DRILL, twist, high-speed-steel, straight shank, wire gage size, single, wire gage No. 39, size in. 0.0995, over-all length in. 2½</p> | | | |
| J-10 W | 40-D-1890-32 | | TMBX2DA | TMBX2 | | | | |
| J-10 W | 40-D-1890-33 | | TMBX2BZ | TMBX2 | | | | |
| J-10 W | 40-D-1890-34 | | — | — | | | | |
| J-10 W | 40-D-1890-35 | | — | — | | | | |
| J-10 W | 40-D-1890-36 | | TMBX2BU | TMBX2 | | | | |
| J-10 W | 40-D-1890-37 | | TMBX2BT | TMBX2 | | | | |
| J-10 W | 40-D-1890-38 | | — | — | | | | |
| J-10 W | 40-D-1890-39 | | TMBX2BR | TMBX2 | | | | |

| | | | | | | |
|------|---|--------------|---------|-------|--|---|
| J-10 | W | 40-D-1890-40 | | | | 1 DRILL, twist, high-speed-steel, straight shank, wire gage size, single, wire gage No. 40, size in. 0.098, over-all length in. 2 ³ / ₈ |
| J-10 | W | 40-D-1890-41 | TMBX2BQ | TMBX2 | | 1 DRILL, twist, high-speed-steel, straight shank, wire gage size, single, wire gage No. 41, size in. 0.096, over-all length in. 2 ⁵ / ₁₆ |
| J-10 | W | 40-D-1890-42 | | | | 1 DRILL, twist, high-speed-steel, straight shank, wire gage size, single, wire gage No. 42, size in. 0.0935, over-all length in. 2 ⁵ / ₁₆ |
| J-10 | W | 40-D-1890-43 | TMBX2BM | TMBX2 | | 1 DRILL, twist, high-speed-steel, straight shank, wire gage size, single, wire gage No. 43, size in. 0.089, over-all length in. 2 ¹ / ₄ |
| J-10 | W | 40-D-1890-44 | TMBX2BL | TMBX2 | | 1 DRILL, twist, high-speed-steel, straight shank, wire gage size, single, wire gage No. 44, size in. 0.086, over-all length in. 2 ³ / ₁₆ |
| J-10 | W | 40-D-1890-45 | | | | 1 DRILL, twist, high-speed-steel, straight shank, wire gage size, single, wire gage No. 45, size in. 0.082, over-all length in. 2 ³ / ₁₆ |
| J-10 | W | 40-D-1890-46 | TMBX2BH | TMBX2 | | 1 DRILL, twist, high-speed-steel, straight shank, wire gage size, single, wire gage No. 46, size in. 0.081, over-all length in. 2 ¹ / ₈ |
| J-10 | W | 40-D-1890-47 | | | | 1 DRILL, twist, high-speed-steel, straight shank, wire gage size, single, wire gage No. 47, size in. 0.0785, over-all length in. 2 ¹ / ₁₆ |
| J-10 | W | 40-D-1890-48 | TMBX2BF | TMBX2 | | 1 DRILL, twist, high-speed-steel, straight shank, wire gage size, single, wire gage No. 48, size in. 0.076, over-all length in. 2 ¹ / ₁₆ |
| J-10 | W | 40-D-1890-49 | TMBX2BE | TMBX2 | | 1 DRILL, twist, high-speed-steel, straight shank, wire gage size, single, wire gage No. 49, size in. 0.073, over-all length in. 2 |
| J-10 | W | 40-D-1890-50 | TMBX2BD | TMBX2 | | 1 DRILL, twist, high-speed-steel, straight shank, wire gage size, single, wire gage No. 50, size in. 0.070, over-all length in. 1 ¹⁵ / ₁₆ |
| J-10 | W | 40-D-1890-51 | TMBX2BC | TMBX2 | | 1 DRILL, twist, high-speed-steel, straight shank, wire gage size, single, wire gage No. 51, size in. 0.067, over-all length in. 1 ¹⁵ / ₁₆ |

VEHICULAR SPARE PARTS AND EQUIPMENT (Contd.)

| NOTE SYMBOL Col. 1 | STOCK NO. (Order by this No.) Col. 2 | FIGURE NO. Col. 3 | PIECE MARK OR PART NO. Col. 4 | DRAWING NO. Col. 5 | NOMENCLATURE Col. 6 | QUAN. PER VEHICLE Col. 7 | UNIT PRICE Col. 8 |
|-----------------------|--|----------------------|----------------------------------|-----------------------|--|-----------------------------|----------------------|
| (*) | | | | | | | |
| | | | | | LOAD—TRUCK, 2 1/2-TON, 6 x 6, SIGNAL CORPS REPAIR, M30 (Contd.) | | |
| J-10 | W 40-D-1890-52 | | — | — | DRILL, twist, high-speed-steel, straight shank, wire gage size, in set, w/ metal case, gage sizes No. 1 to 60 (Contd.) | | |
| J-10 | W 40-D-1890-53 | | — | — | 1 DRILL, twist, high-speed-steel, straight shank, wire gage size, single, wire gage No. 52, size in. 0.0635, over-all length in. 1 7/8 | | |
| J-10 | W 40-D-1890-54 | | TMBXIDA | TMBX1 | 1 DRILL, twist, high-speed-steel, straight shank, wire gage size, single, wire gage No. 53, size in. 0.0595, over-all length in. 1 13/16 | | |
| J-10 | W 40-D-1890-55 | | — | — | 1 DRILL, twist, high-speed-steel, straight shank, wire gage size, single, wire gage No. 54, size in. 0.055, over-all length in. 1 13/16 | | |
| J-10 | W 40-D-1890-56 | | — | — | 1 DRILL, twist, high-speed-steel, straight shank, wire gage size, single, wire gage No. 55, size in. 0.052, over-all length in. 1 3/4 | | |
| J-10 | W 40-D-1890-57 | | TMBX1BR | TMBX1 | 1 DRILL, twist, high-speed-steel, straight shank, wire gage size, single, wire gage No. 56, size in. 0.0465, over-all length in. 1 11/16 | | |
| J-10 | W 40-D-1890-58 | | — | — | 1 DRILL, twist, high-speed-steel, straight shank, wire gage size, single, wire gage No. 57, size in. 0.043, over-all length in. 1 11/16 | | |
| J-10 | W 40-D-1890-59 | | TMBX1BQ | TMBX1 | 1 DRILL, twist, high-speed-steel, straight shank, wire gage size, single, wire gage No. 58, size in. 0.042, over-all length in. 1 5/8 | | |
| J-10 | W 40-D-1890-60 | | — | — | 1 DRILL, twist, high-speed-steel, straight shank, wire gage size, single, wire gage No. 59, size in. 0.041, over-all length in. 1 9/16 | | |
| J-10 | W 40-D-1890-60 | | — | — | 1 DRILL, twist, high-speed-steel, straight shank, wire gage size, single, wire gage No. 60, size in. 0.040, over-all length in. 1 9/16 | | |

| | | | | | | |
|------------|------------------|---|---|---------|---|----|
| Engr. C. W | 58-E-200-65 | 6 | — | WK-4 | EXTINGUISHER, fire, portable, carbon dioxide, 4 lb. capacity, w/wall bracket. | 1 |
| M-1 | W 17-F-1635-50 | — | — | — | FILTER, direct current, 30 v., 100 amp., complete, w/bracket (Sig. Corps Dwg. Nos. SC-D-6966 and SC-D-7014) | 1 |
| J-2 | W 57-F-3885 | 4 | — | A339699 | FORCEPS, laboratory, balance, S., length 3 3/4 in. | 15 |
| J-101 | W 40-G-142-5 | — | — | — | GRINDER, portable, bench, hp. 1/2, current a-c., volts 110, cycle 60, phase one, wheel size 7 in. x 1 in. | 1 |
| J-8 | W 42-G-1575 | — | — | — | GUARD, safety, S., size 17 3/4 in. x 3 1/2 in. (Sig. Corps Dwg. No. SC-D-7421, items 28 and 29) | 1 |
| M-3 | W 50-G-475 | 6 | — | — | GUN, cleaning, air blow, 1/4 in., to have 1/4 in. male standard pipe, straight thread, w/30° taper seat connections | 1 |
| H-7 | 33-H-118-500 | — | — | — | HOSE, air, rubber, 1/4 in. I.D., single braid, with 1/4 in. straight pipe thread, male couplings both ends, O.D. 3/8 in., length 12 ft. | 1 |
| Med. C. | 57-K-340 | — | — | — | KIT, first aid, motor vehicle, 24 unit. | 1 |
| G-9 | W 41-L-158 | — | — | C145712 | LADDER, step, steel. | 1 |
| H-4 | 17-L-6805 | — | — | GE-G-10 | LAMP, neon glow, 1 watt, w/medium screw base, 110 v. | 2 |
| H-4 | 17-P-3727 | 5 | — | A339681 | PLUG, attachment, non-watertight, double outlet | 4 |
| H-4 | 17-P-3726 | 5 | — | A339701 | PLUG, attachment, single outlet | 4 |
| H-4 | 17-R-12725-200 | — | — | — | ROD, ground, G-P-29 (Sig. Corps Dwg. No. SC-D-7402) | 1 |
| J-15 | W 26-S-32801-150 | — | — | — | SHELF, test instrument, wood, shock mounted, felt covered, complete, size 10 ft.-8 in. x 11 3/8 in. (Sig. Corps Dwg. No. SC-D-7409) | 1 |
| J-15 | W 26-S-36170 | — | — | — | STOOL, wood, non-adjustable, height 27 in. (Sig. Corps Dwg. No. SC-D-7417) | 3 |
| J-5 | W 41-V-98 | — | — | — | VICE, bench, clamp base, jaw opening 2 in., width of jaw 2 in. | 2 |
| J-5 | W 41-V-276 | 6 | — | — | VICE, machinists, swivel base, stationary jaws, width of jaws 4 in., opening of jaws 5 1/2 in. | 1 |
| J-1 | W 40-W-787 | — | — | — | WHEEL, buffing, muslin, three sewing, 60 ply, 6 in. diam., 1/2 in. arbor hole, hardened center. | 1 |
| J-1 | W 40-W-957-850 | — | — | — | WHEEL, wire, S., size 6 in. x 3/4 in., arbor hole 1/2 in. | 1 |

ORD 7 SNL G-235
Organizational Spare
Parts and Equipment

| NOTE SYMBOL Col. 1 | STOCK NO. (Order by this No.) Col. 2 | FIGURE NO. Col. 3 | PIECE MARK OR PART NO. Col. 4 | DRAWING NO. Col. 5 | NOMENCLATURE Col. 6 | BASIS OF ISSUE Col. 7 | UNIT PRICE Col. 8 |
|--------------------|--------------------------------------|-------------------|-------------------------------|--------------------|--|-----------------------|-------------------|
| (♦) | | | | | ORGANIZATIONAL SPARE PARTS FOR 2 1/2-TON, 6 x 6, GMC CHASSIS For listing of these parts see SNL G-508. | | |
| | | | | | ORGANIZATIONAL ACCESSORIES No Special Tools authorized. | | |
| | | | | | APPLICABLE CLEANING AND PRESERVING MATERIALS The following items are extracted from SNL K-1 and requisitioned as required. See TM 9-850 for usage. To be included when data become available. | | |

NOTES

- (♦) Items listed in this SNL will be stored under SNL No. G-235, unless the note symbol indicates otherwise, but Zone of Interior Depots will review and report these items under the assigned SNL code prefix or stock class.
- φ The major item indicated by (φ) is stored, issued, and reviewed under "Major Items," SNL G-1.
- W (1) Items marked by (W) are non-expendable.
(2) Items not marked by (W) are expendable.

MANUFACTURERS' SYMBOLS

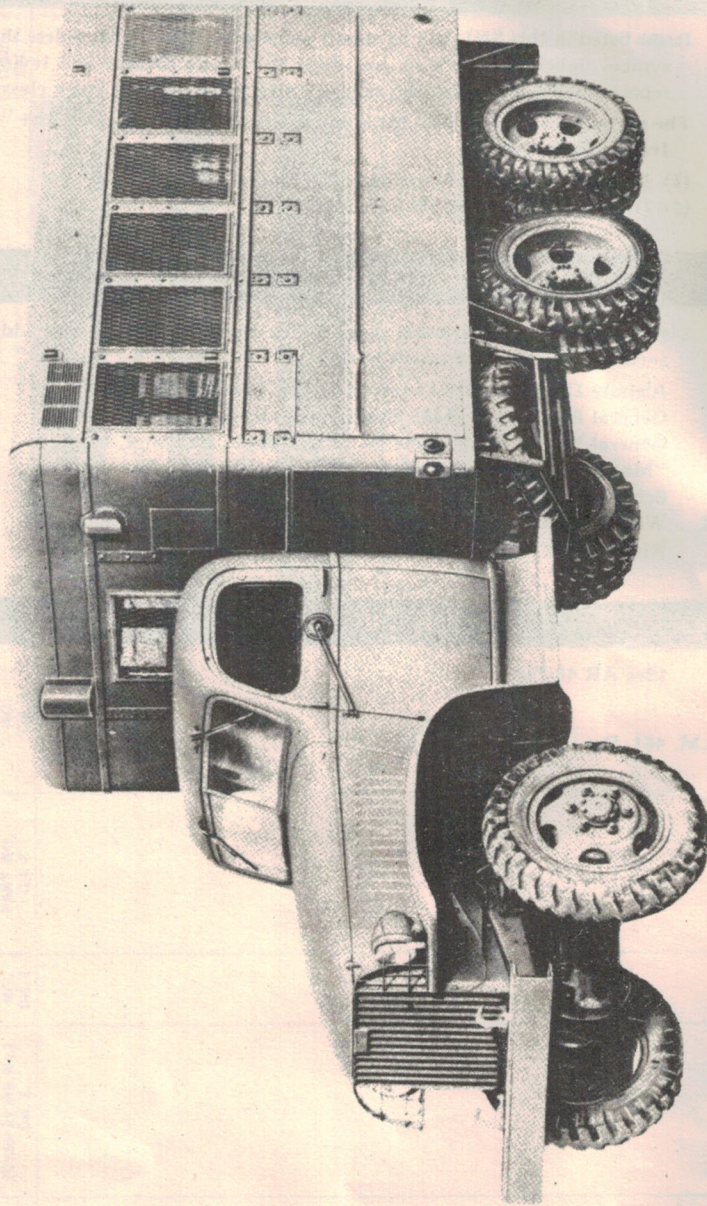
Listed below for identification purposes are the symbol prefix and address of each manufacturer pertinent to this list:

| | |
|-----|---|
| AD | Alemite Division, 1826 Diversey Pkwy., Chicago 14, Ill. |
| GE | General Electric Co., 1285 Boston Ave., Bridgeport 2, Conn. |
| GM | General Motors Corp., 3044 W. Grand Blvd., Detroit 2, Mich. |
| MZ | "Mazda"—General Electric Co., Schenectady 5, N. Y. |
| SV | Schrader's Son, A., 470 Vanderbilt Ave., Brooklyn 17, N. Y. |
| WAK | Walker Mfg. Co. of Wisconsin, 1201 Michigan Blvd., Racine, Wis. |
| WK | Kidde & Co., Inc., Walter, 675 Main St., Belleville 9, N. J. |

USE OF PRICES

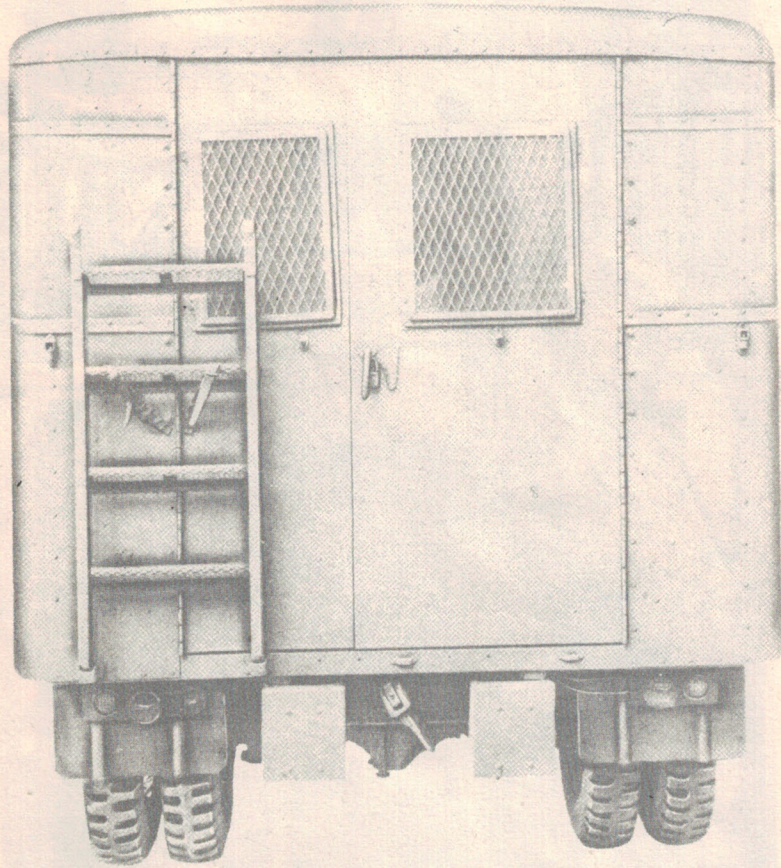
(See AR 45-75)

(O.O.M. 461/Rar. Ars. (12-26-44))



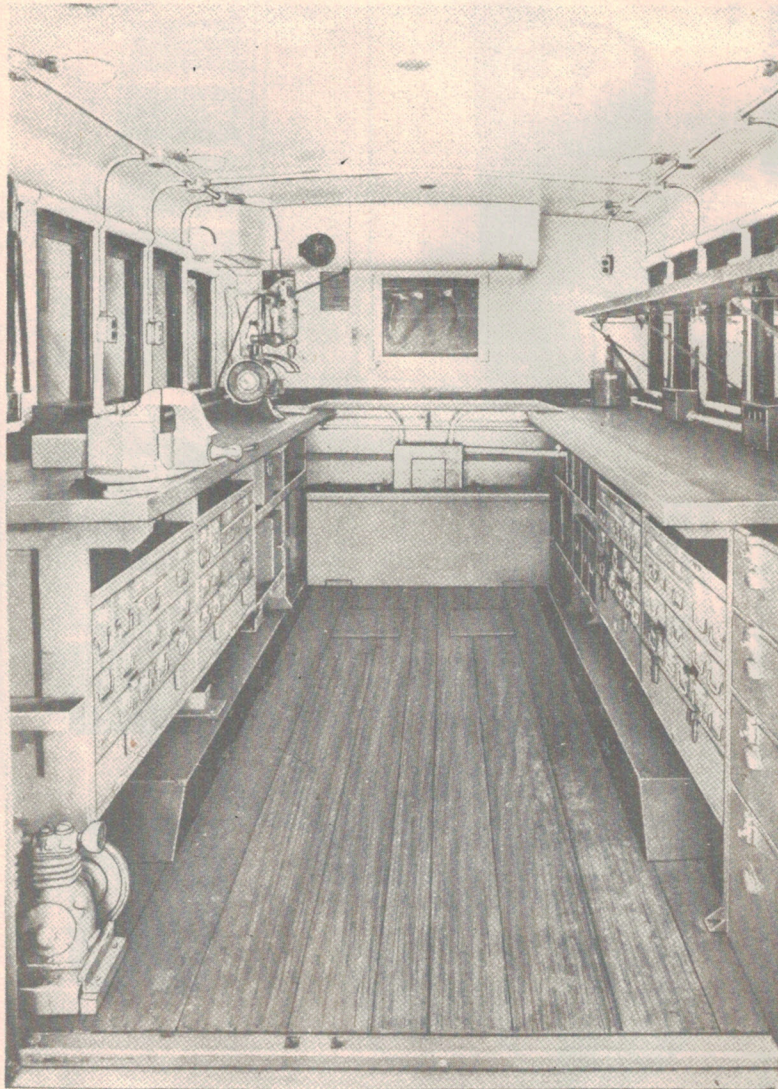
RA PD 85583

Figure 1 — Truck, 2 1/2-Ton, 6 x 6, Signal Corps Repair, M30 (ST-6 Body — Collapsible Type)



RA PD 88048

**Figure 2 – Truck, 2 1/2-Ton, 6 x 6, Signal Corps Repair,
M30 (Rear View)**



RA PD 93022

**Figure 3 — Truck, 2 1/2-Ton, 6 x 6, Signal Corps Repair,
M30 (Interior View)**

RA PD 93021

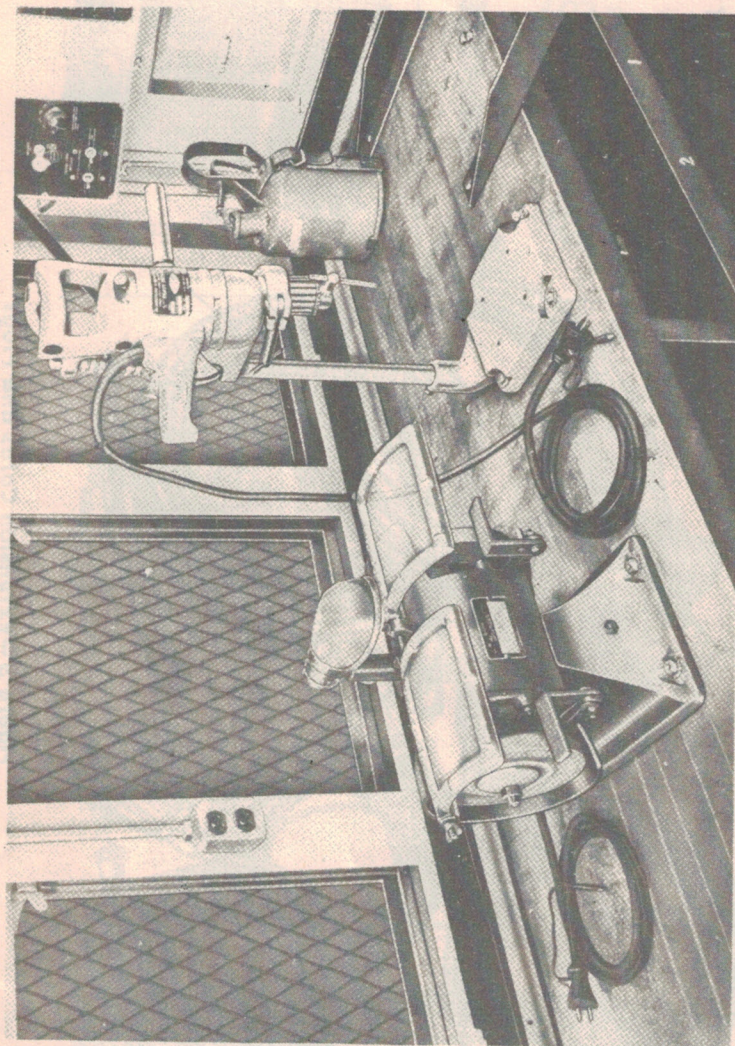


Figure 4 — Truck, 2 1/2-Ton, 6 x 6, Signal Corps Repair, M30 (Interior View — Left Side)

- A — PLUG - 17-P-3726
- B — PLUG - 17-P-3727
- C — CORD - 17-C-35081
- D — CORD - 17-C-35080-30
- E — CORD - 17-C-35092

RA PD 60821

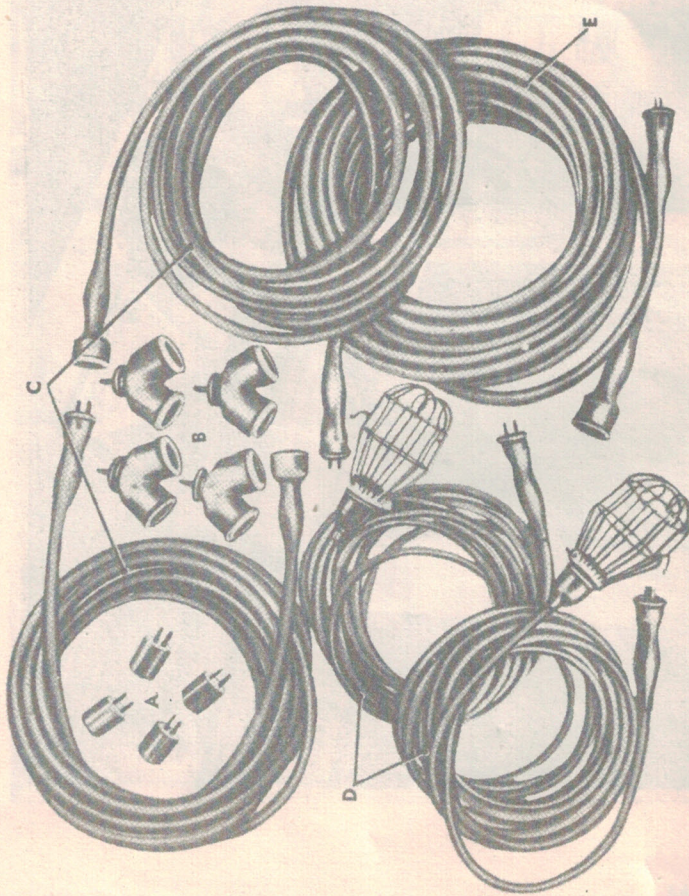
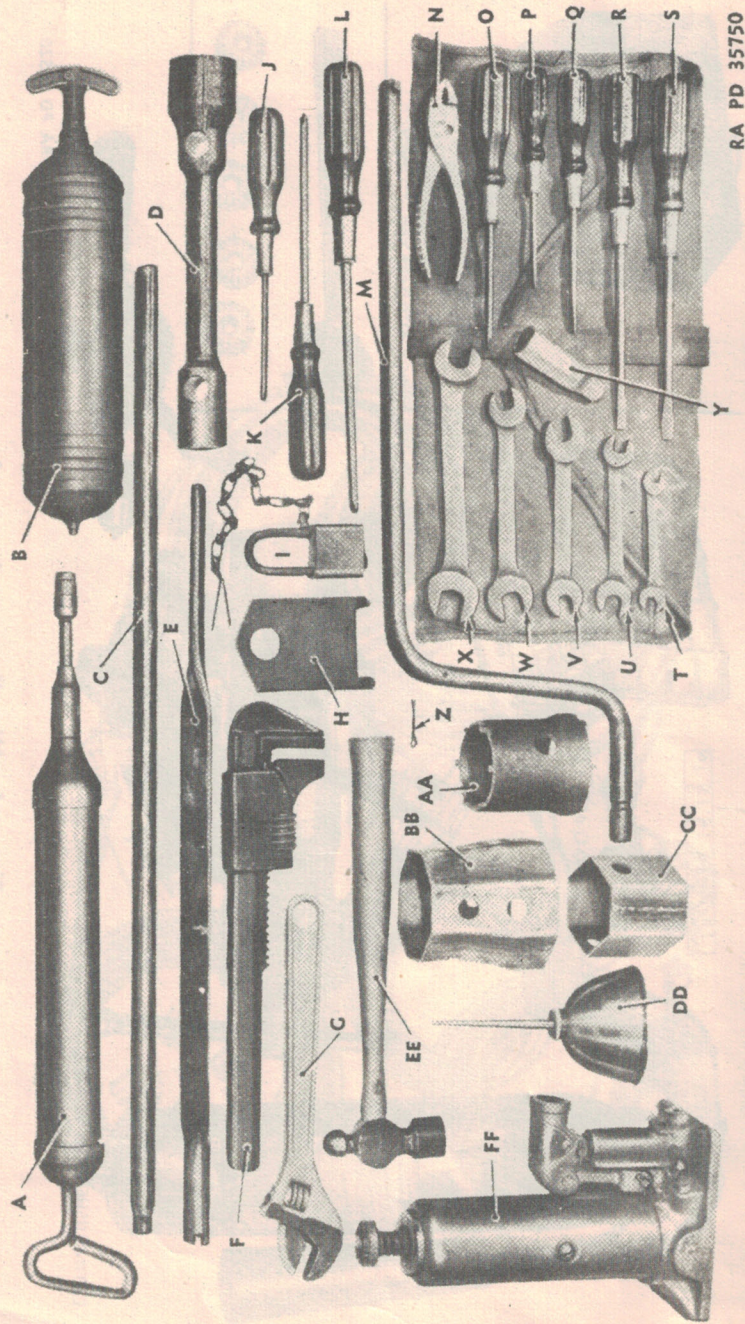


Figure 5 — Extension Cords and Plugs

ORD 7 SNL G-235
Organizational Spare
Parts and Equipment



RA PD 35750

Figure 7 - Vehicular Accessories

- A — GUN - 41-G-1344-40
- B — EXTINGUISHER - GM-2176169
- C — HANDLE - GM-2146130
- D — WRENCH - GM-2144835
- E — LEVER - B245134
- F — WRENCH - 41-W-450
- G — WRENCH - 41-W-488
- H — BRACKET (FOR CRANK)
- I — PADLOCK-SET - GM-2158475
- J — SCREWDRIVER - 41-S-1636
- K — SCREWDRIVER - 41-S-1640
- L — SCREWDRIVER - 41-S-1642
- M — CRANK, STARTING
- N — PLIERS - 41-P-1650
- O — SCREWDRIVER - 41-S-1638
- P — SCREWDRIVER - 41-S-1117-4
- Q — SCREWDRIVER - 41-S-1117-6
- R — SCREWDRIVER - 41-S-1117-8
- S — SCREWDRIVER - 41-S-1104
- T — WRENCH - 41-W-991
- U — WRENCH - 41-W-1003
- V — WRENCH - 41-W-1005-5
- W — WRENCH - 41-W-1008-10
- X — WRENCH - 41-W-1012-5
- Y — WRENCH - GM-2146479
- Z — { PIN, COTTER, SPLIT,
S, 1/8 X 1-1/4
- AA — WRENCH - GM-3670067
- BB — WRENCH - GM-2144844
- CC — WRENCH - GM-2144843
- DD — OILER - 13-O-1530
- EE — HAMMER - 41-H-523
- FF — JACK - 41-J-72

Figure 7A — Vehicular Accessories — Nomenclature

ORD 7 SNL G-235

**Organizational Spare
Parts and Equipment**

DISTRIBUTION: AAF (10); AGF (10); ASF (2); S Div ASF (1); AAF Comds (2);
Arm & Sv Bd (2); T of Opn (10); Tech Sv (2); SvC (10); PC&S (1)
except Air Bases (3); PE, 9 (5); Dist O, 9 (5); Dist Br O, 9 (3);
Reg O, 9 (3); Establishments, 9 (5); Decentralized Sub-O, 9 (3);
Tk Deps, 9 (5); Gen & Sp Sv Schs (10); USMA (2); A (10);
CHQ (10); D (2); AF (5); R 9 (2); Bn 9 (2); C 9 (3).

One (1) each to the following T/O & E's: 1-457T; 11-7; 11-7S;
11-16; 11-47; 11-57; 11-107; 11-127; 11-237; 11-287; 11-317;
11-357; 11-500; Signal Service Organization, Wire & Cable,
Wire Rep Sec (GQ), 11-587.

For explanation of symbols, see FM 21-6.